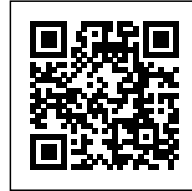




HOUSE IN KEREMMA

Posted on July 6, 2016 by urbanNext



Categories: [Energy and sustainability](#), [Lacaton & Vassal](#), [Low Density](#), [Middle Density](#), [Project](#), [Technology and fabrication](#), [Total Singular Housing](#)

Tags: [Architecture&climate](#), [Architecture&nature](#), [Brest](#), [Brushed Concrete](#), [Energetic Approach](#), [France](#), [Keremma](#), [Modular housing](#), [Natural dialogue](#), [Private housing](#), [Project](#), [Public vs. Private](#), [Second nature](#), [Singular Housing](#), [Technological Approach](#), [Thermal comfort](#), [Thermodynamic practices](#), [Thermodynamics](#)

urbanNext Lexicon

House in Keremma

<https://urbannext.net/house-in-keremma/>

Keremma takes its name from the wife of Louis Rousseau who, in 1822, bought 300 hectares of dunes that he set about stabilizing. Today, most of the inhabitants of this place, northeast of Brest, are his descendants. This house's lot is located behind a dune a few dozen meters from the sea, which lies to the north. There are no views of the sea, but you can constantly sense its presence through sound, wind, and clouds.



ISSN : 2575-5374

urbanNext Lexicon

House in Keremma
<https://urbannext.net/house-in-keremma/>



ISSN : 2575-5374

urbanNext Lexicon

House in Keremma
<https://urbannext.net/house-in-keremma/>



ISSN : 2575-5374

urbanNext Lexicon

House in Keremma
<https://urbannext.net/house-in-keremma/>



The house is inserted parallel to the lot's northern and southern limits, between the edge of a wood and a clearing. It is comprised of three separate buildings, arranged in the arc of a circle: the convex side faces north, exposed to bad weather and wind; the concave side faces south, creating a more private protected exterior space with good exposure. The three volumes all have the same dimensions, areas, shapes and heights; they only differ in their interior layout, the type of shell and how they are enclosed. Sliding shutters close off the façades. When they are open, they link the houses to one another, modifying the relationship between indoors and outdoors.

ISSN : 2575-5374

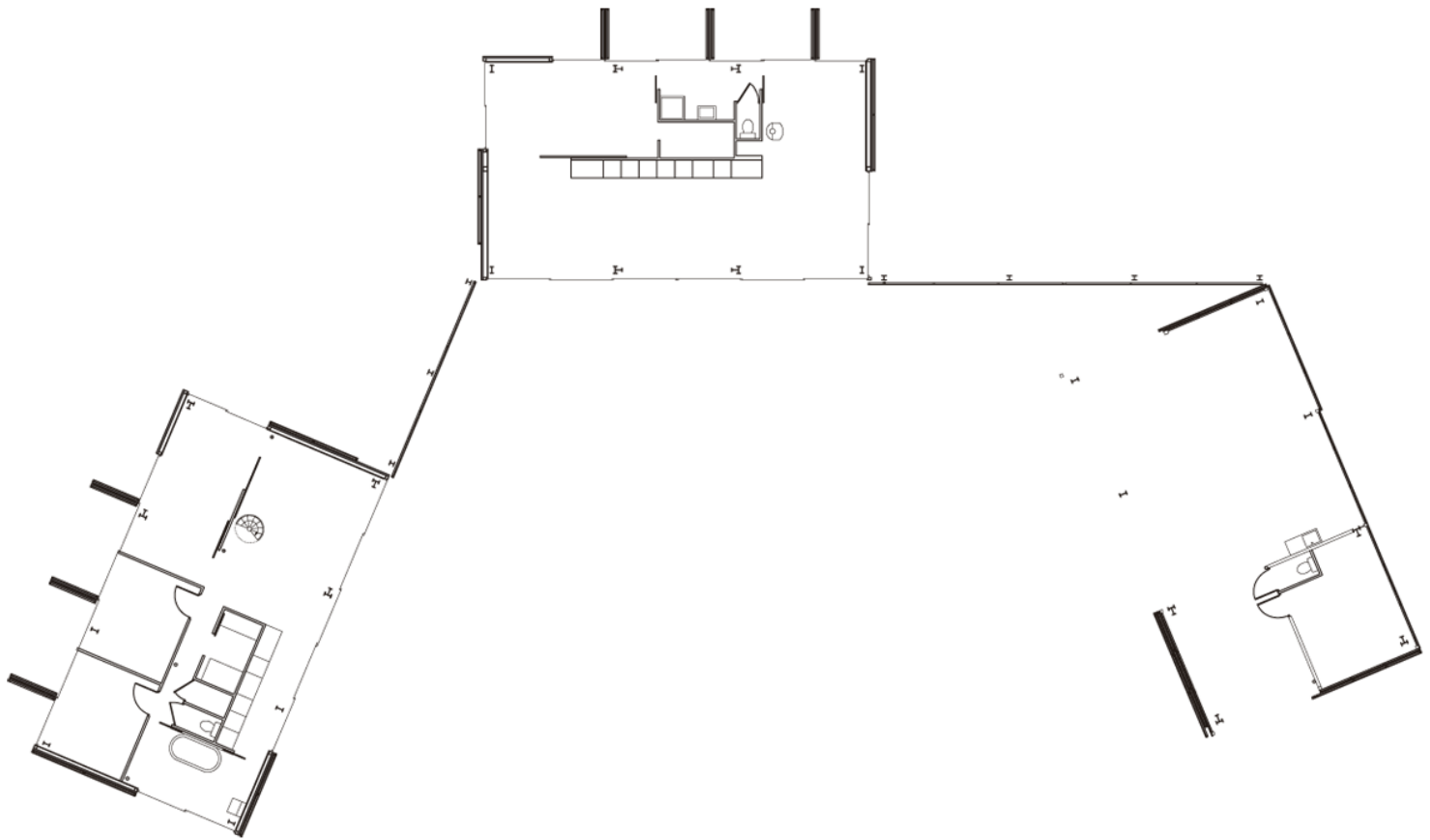
urbanNext Lexicon

House in Keremma
<https://urbannext.net/house-in-keremma/>



ISSN : 2575-5374

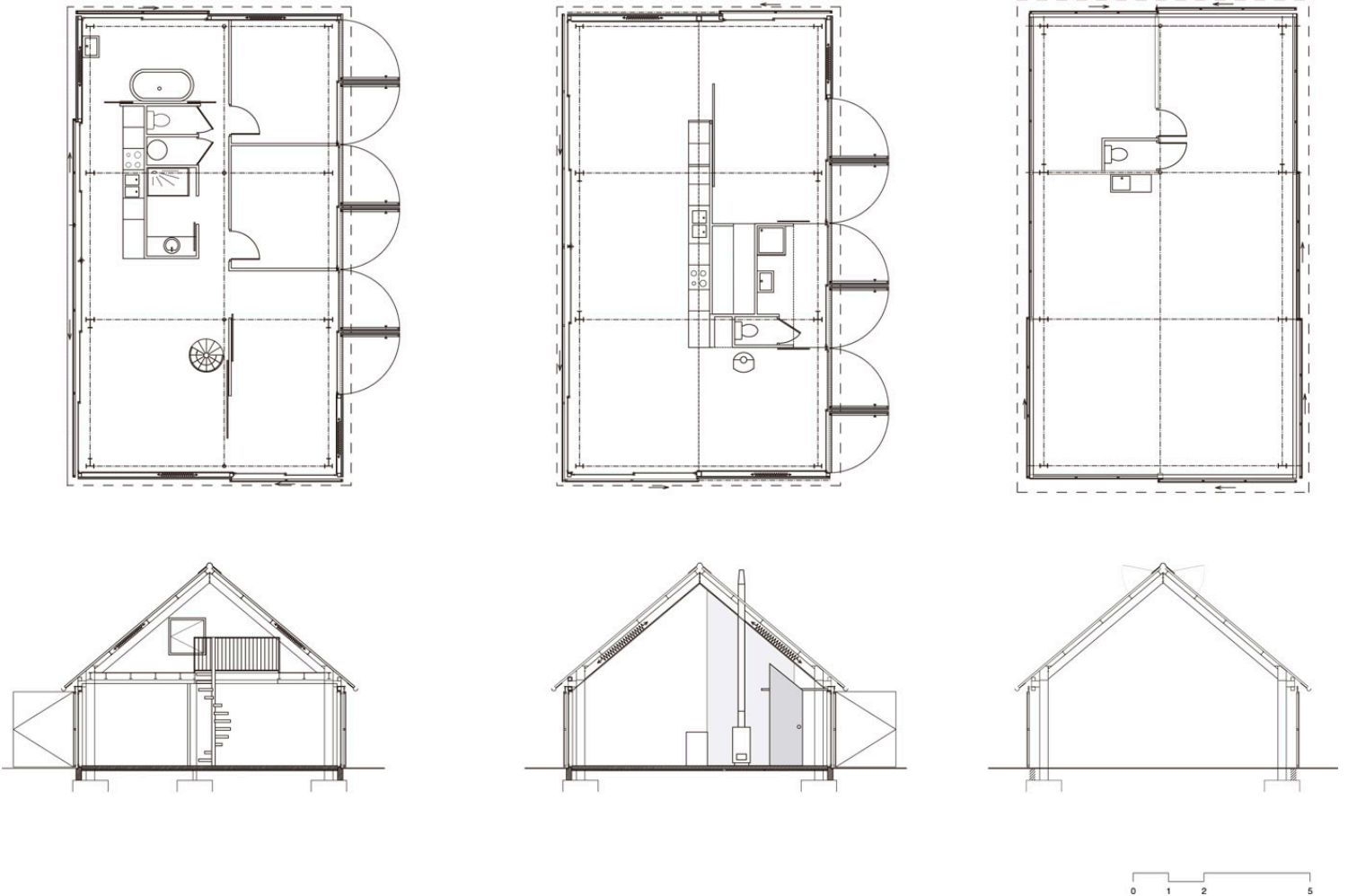
Site Plan



Plans

urbanNext Lexicon

House in Keremma
<https://urbannext.net/house-in-keremma/>



Plans & Sections

Extract from coming soon
Total Singular Housing

Related publications:

ISSN : 2575-5374

urbanNext Lexicon

House in Keremma
<https://urbannext.net/house-in-keremma/>

Total Housing
Total Latin American Architecture
Total China
Total Landscape

ISSN : 2575-5374

urbanNext Lexicon

House in Keremma
<https://urbannext.net/house-in-keremma/>

ISSN : 2575-5374