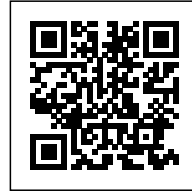




SERENA HOUSE

Posted on March 12, 2024 by Gabriel Sastre



Categories: [MVP](#), [No Density](#), [Portugal](#),
[Project](#), [Technology and fabrication](#)

Tags: [Architecture](#), [Architecture&nature](#),
[Concrete](#), [Design strategies](#), [Housing](#), [Portugal](#),
[Project](#), [Technological Approach](#), [Wood](#)

urbanNext Lexicon

Serena House

<https://urbannext.net/80281-2/>

In the enchanting landscapes of Comporta, Casa Serena emerges as a residential estate concept, embodying the tranquility and serenity of this magical place on the Atlantic shores of Portugal. Architecture and design firm MVP interprets local architectural heritage, embedding a harmonious indoor-outdoor living experience within the raw beauty of the Comporta region.



The design of Casa Serena reflects a fusion of traditional aesthetics with contemporary minimalism, drawing inspiration from both brutalist and minimalist typologies. It is envisioned as a secluded retreat where the whispers of nature remain unaltered, and the architecture seamlessly integrates with its surroundings.

ISSN : 2575-5374

urbanNext Lexicon

Serena House

<https://urbannext.net/80281-2/>



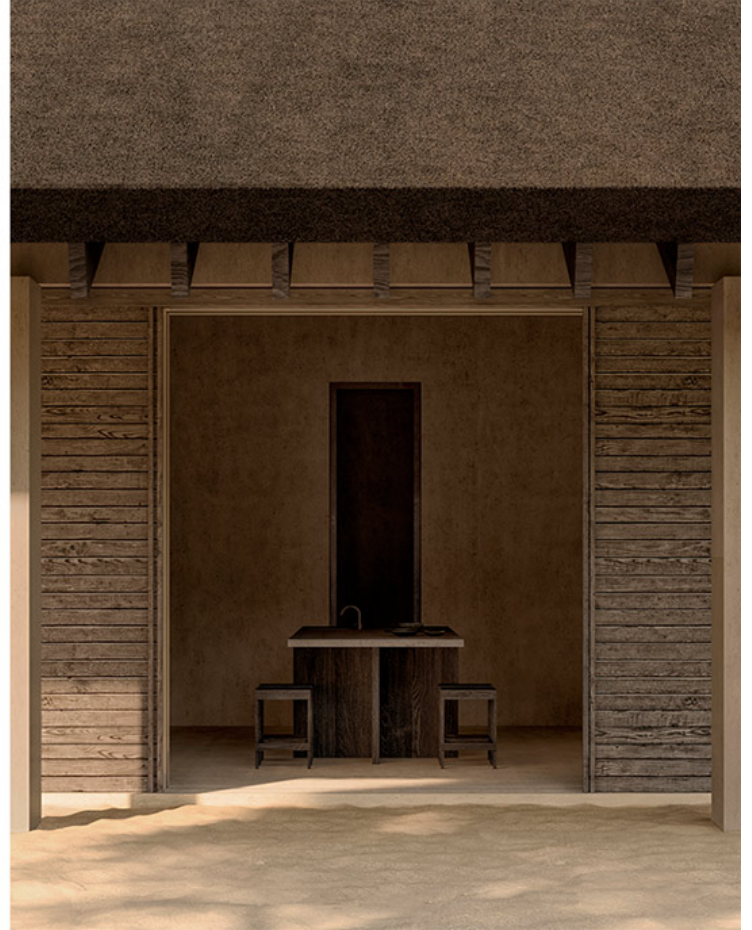
Graceful living spaces unfold through a refined palette of earth-toned concrete, local woods, thatched roofs, and steel accents. The mélange of inward and outward-facing spaces creates a seamless indoor-outdoor interplay. Sacral openings in the façade and retractable windows accentuate the fluid transition from the intimate ambiance within to the allure of the encompassing natural environment.

ISSN : 2575-5374

urbanNext Lexicon

Serena House

<https://urbannext.net/80281-2/>



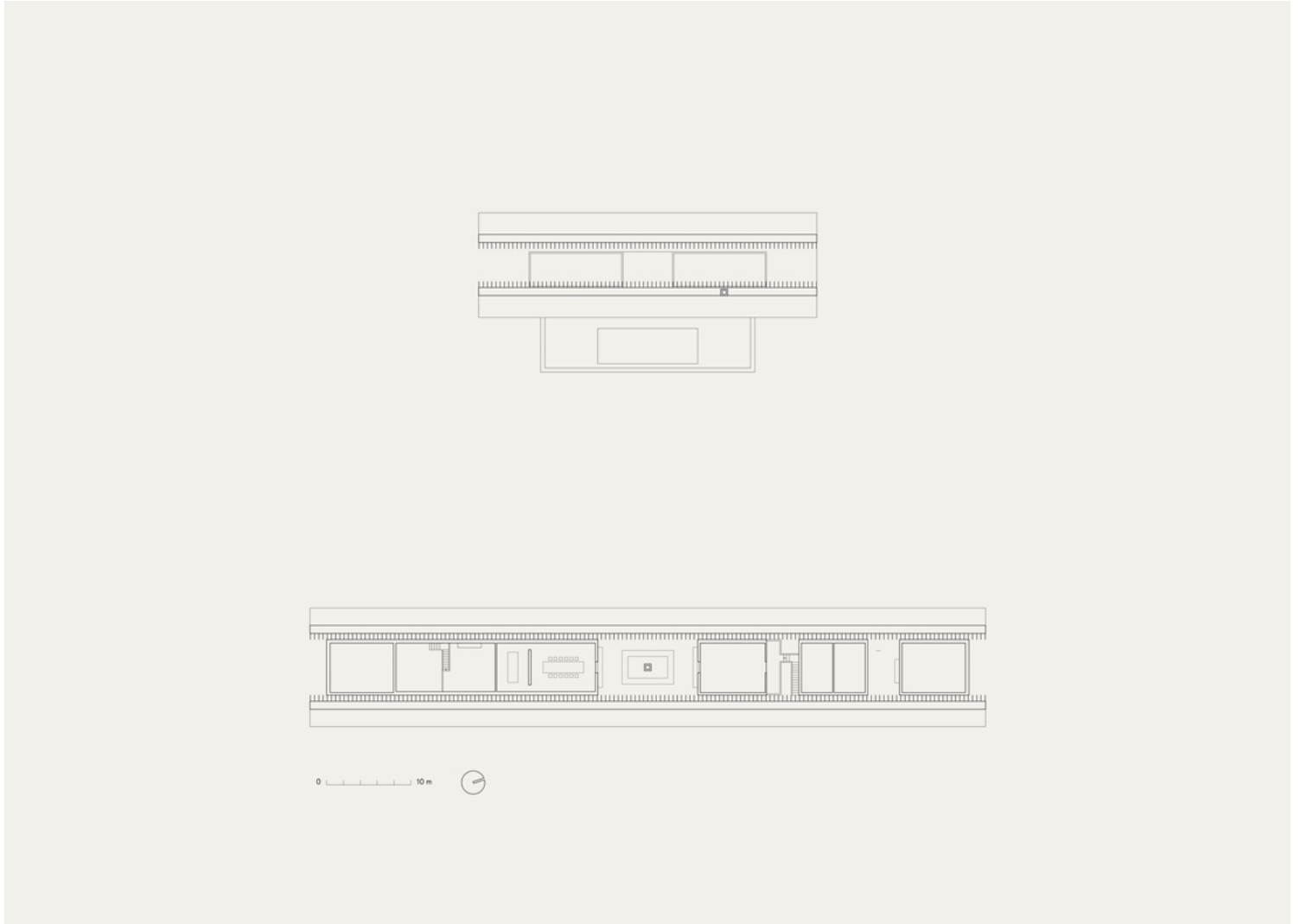
Casa Serena's original design comprises two master suites and two additional bedrooms—each with en-suite bathrooms, with one featuring an additional roofed outdoor shower area. The main house also includes a centrally located roofed lounge with an open fireplace, an indoor living room and library, dining space, kitchen, prep kitchen, two powder rooms, a gym with a relaxation area, a meditation room, a wine cellar, a games room, and various storage and functional facilities.

ISSN : 2575-5374

urbanNext Lexicon

Serena House

<https://urbannext.net/80281-2/>



All spaces are outlined by the corridor on the front facade, which provides entrance at the center and the edges of the building, and the open colonnade, whose pillars rest gently upon the sands, on the back facade. The semi-enclosed pool house accommodates a kitchen, a bathroom, and additional spaces for mixed use, all connected to the pool deck. The main house and pool house are positioned parallel to each other, creating a feeling of solitude and privacy between them.

ISSN : 2575-5374

urbanNext Lexicon

Serena House

<https://urbannext.net/80281-2/>

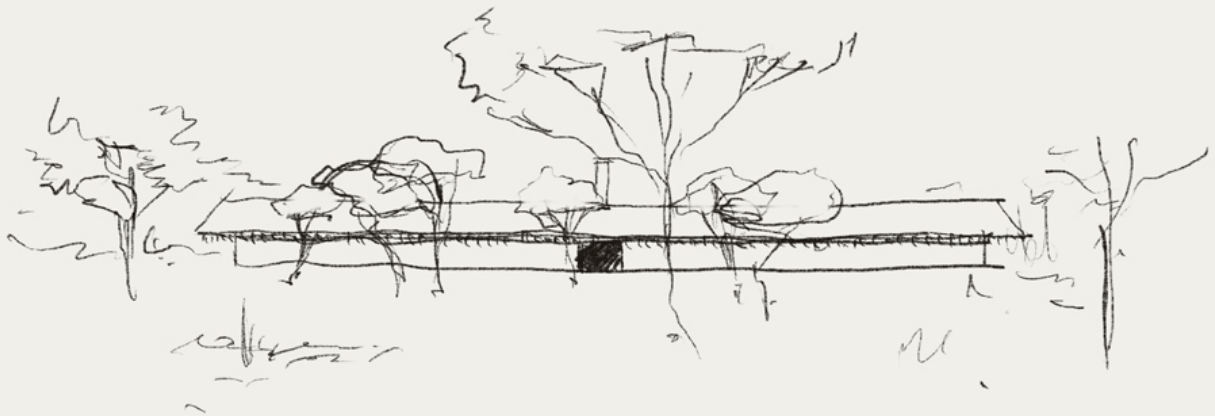


The underlying concept, articulated through the rhythm of structural elements and the configuration and connection of levels and semi-enclosed spaces, facilitates flexible alignment based on property requirements while preserving the integrity of the original design.

ISSN : 2575-5374

urbanNext Lexicon

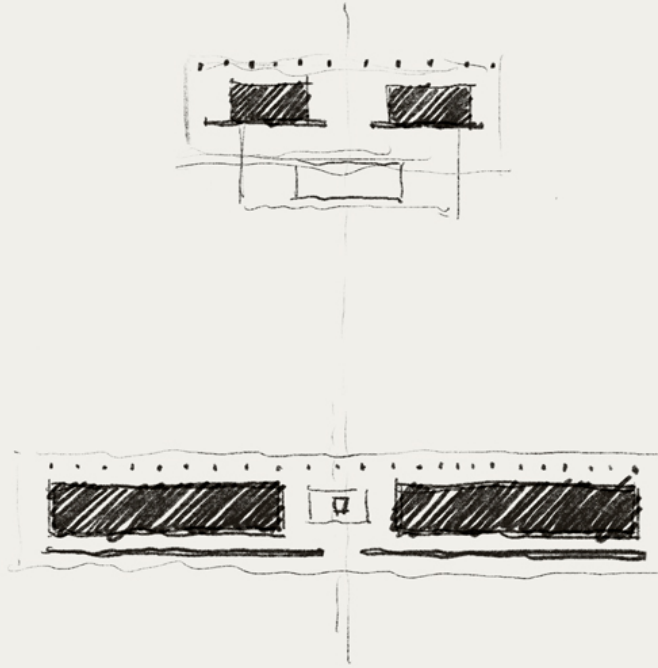
Serena House
<https://urbannext.net/80281-2/>



ISSN : 2575-5374

urbanNext Lexicon

Serena House
<https://urbannext.net/80281-2/>



ISSN : 2575-5374

urbanNext Lexicon

Serena House
<https://urbannext.net/80281-2/>

ISSN : 2575-5374