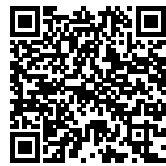




SANYA JINMAO FARM LAB: MULTI-FUNCTIONAL COMPOUND

Posted on March 7, 2022 by xavigonzalez



Categories: [CLOU architects](#), [Contributors](#), [Densities](#), [Formats](#), [Middle Density](#), [Project](#), [Territory and mobility](#), [Topics](#)

Tags: [China](#), [Circulation](#), [Community](#), [Efficiency](#), [Food production](#), [Landscape](#), [Multifunctional building](#), [Performative Envelope](#), [Project](#), [Sanya](#), [Sustainability](#), [Thermal comfort](#), [Working Space](#)

urbanNext Lexicon

Sanya Jinmao Farm Lab: Multi-functional Compound

<https://urbannext.net/sanya-jinmao-farm-lab-multi-functional-compound/>

Sanya Farm Lab is a 4,000 sqm four-story exhibition space located in the Nanfan High Tech District of Sanya, the southernmost city on tropical Hainan Island. Showcasing advanced scientific and technological agricultural processes that respond to Sanya's characteristic climate, the multi-functional compound combines research, commercial and educational uses, and communal experience.



With the local government investing to address pressing issues on environmental change, land and water scarcity, and food production, and with a growing demand for rural tourism and nature experience among the Chinese middle class, Sanya's Nanfan District is transforming into a hub for scientific research on tropical agriculture.

ISSN : 2575-5374

urbanNext Lexicon

Sanya Jinmao Farm Lab: Multi-functional Compound

<https://urbannext.net/sanya-jinmao-farm-lab-multi-functional-compound/>

Sanya FarmLab brings together a laboratory for advanced organic crop farming with the evolving awareness of eco-conscious lifestyles. Thematizing the potential of abstract technologies to enhance practical applications in everyday life, it helps to break down the conventional boundaries between the urban and natural environments.



More Than an Exhibition Centre

Within the multi-faceted building, exhibition spaces showcase high-tech innovation in agricultural robotics and indoor vertical farming in close proximity to the researchers' offices. Advanced technologies are presented in educational events next to a "farm-to-table" restaurant experience

ISSN : 2575-5374

urbanNext Lexicon

Sanya Jinmao Farm Lab: Multi-functional Compound

<https://urbannext.net/sanya-jinmao-farm-lab-multi-functional-compound/>

where the local produce can be sampled.

In sequential indoor and outdoor zones, engaging public spaces create opportunities for encounters and interaction between researchers, visitors, and tourists.



In the contemporary interpretation of a farm, the unique juxtaposition of office, lab, and exhibition allows visitors to trace the possibilities of modern agriculture in an experiential, immersive environment. Catering to a diverse audience of experts and tourists, adults and children, interlinked didactics narrate the processes of a comprehensive experience: to discover, observe, understand, try, and taste.

ISSN : 2575-5374

Platforms, Stairs, and Shade

The architectural composition is defined by three key ideas: a convergence of outside and inside, with external and semi-external spaces on every level of the building; a cohesive outdoor circulation area that enhances the function and use of the spaces; and a building envelope designed for maximum climate comfort.



Generous outdoor public spaces are carved from the inner building massing to complement the interior spaces throughout: a continuous covered loop providing landscape continuity and shelter along the ground floor lobbies and exhibition zones, a cantilevering lab space on the second floor converting the adjacent two-story showcase into a half-climate space, and large landscaped

platforms on the third and fourth levels, perfect for outdoor dining and a children's playground.



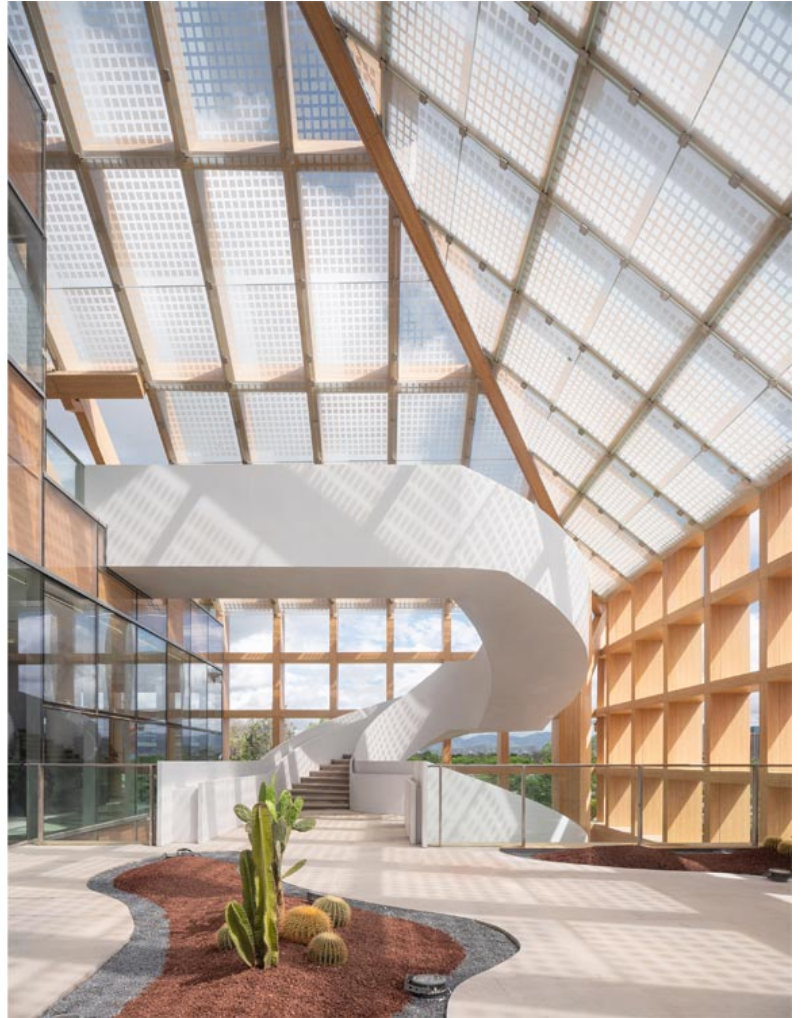
Feature circulation elements link across all levels: an impressive spiral staircase winds its way up through the open areas, while the bleachers of a multi-function auditorium integrate connectivity with a public forum.

In a modern interpretation of the protruding roof structures that cover the traditional houses of the local Li minority, a permeable grid wraps the entire building as a faceted outer envelope, providing shade and shelter while ensuring natural ventilation and open views. With a depth of almost a meter, it enhances the overall climate comfort across the building while defining its distinctive appearance.

urbanNext Lexicon

Sanya Jinmao Farm Lab: Multi-functional Compound

<https://urbannext.net/sanya-jinmao-farm-lab-multi-functional-compound/>



In line with its advanced thematic content, the FarmLab's design embraces contemporary active and passive sustainability features.

Efficiency in directing sun exposure is inherent to its compact multi-layer envelope, with the deep grid providing shade to outdoor areas, indoor offices and public spaces with a sunlight absorption of up to 70%.

ISSN : 2575-5374

urbanNext Lexicon

Sanya Jinmao Farm Lab: Multi-functional Compound

<https://urbannext.net/sanya-jinmao-farm-lab-multi-functional-compound/>



In the interiors, glare-free natural light filters below the horizontal ledges into offices and research zones. Sunlight permeates the partial translucent roof over the outdoor areas, while open façades ensure optimum natural ventilation. Public half-climate spaces alternate with air-conditioned zones on all levels as required by the program. On the ground floor, a continuous perimeter overhang provides sheltered access and open-air circulation.

ISSN : 2575-5374

urbanNext Lexicon

Sanya Jinmao Farm Lab: Multi-functional Compound

<https://urbannext.net/sanya-jinmao-farm-lab-multi-functional-compound/>



The inclined and horizontal shelf-like grid elements are fitted with gutters for drainage. Rainwater harvested here can be used for landscape irrigation across the building.

ISSN : 2575-5374



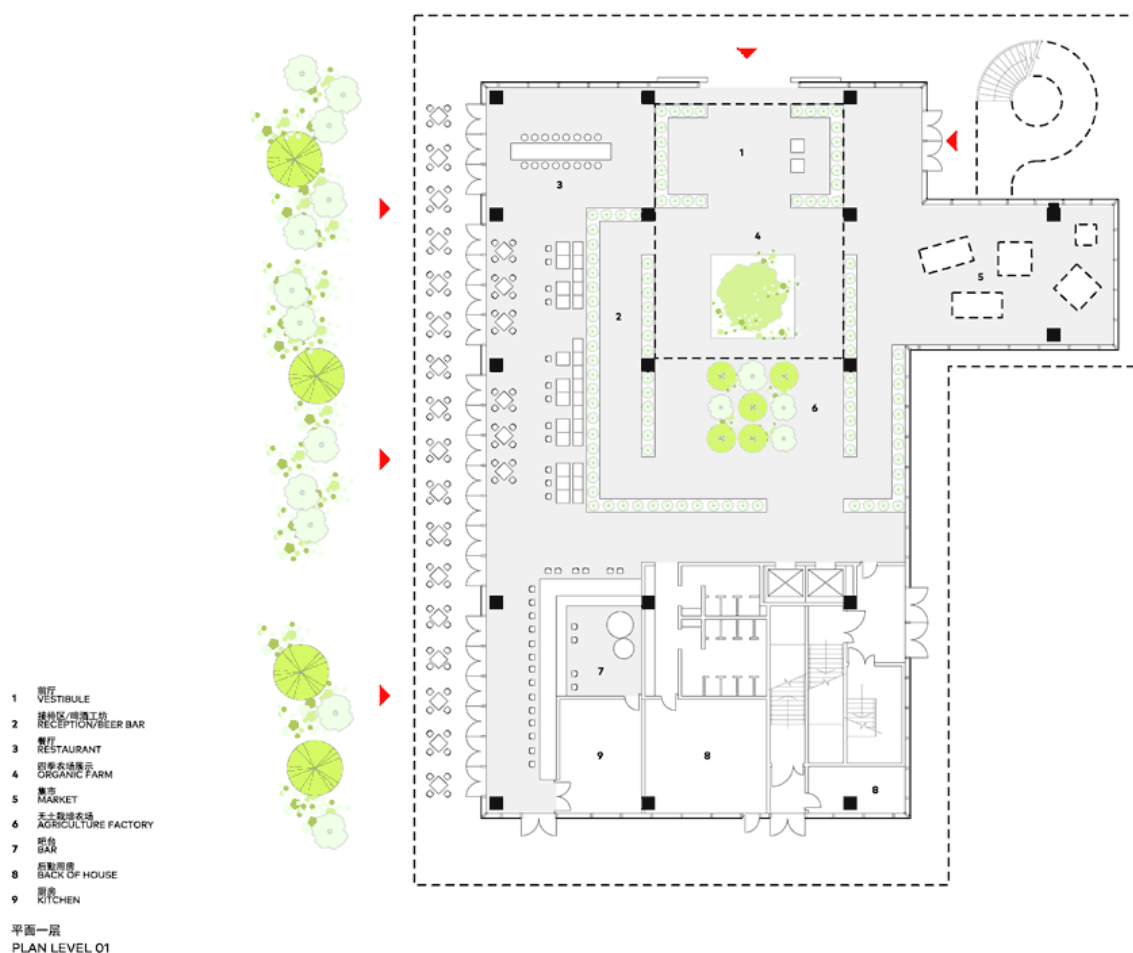
In the central vertical circulation core, warm air from all areas is extracted above the roof by means of the natural chimney effect.

Light colors on all exterior surfaces underline the efforts toward minimum heat gain.

urbanNext Lexicon

Sanya Jinmao Farm Lab: Multi-functional Compound

<https://urbannext.net/sanya-jinmao-farm-lab-multi-functional-compound/>

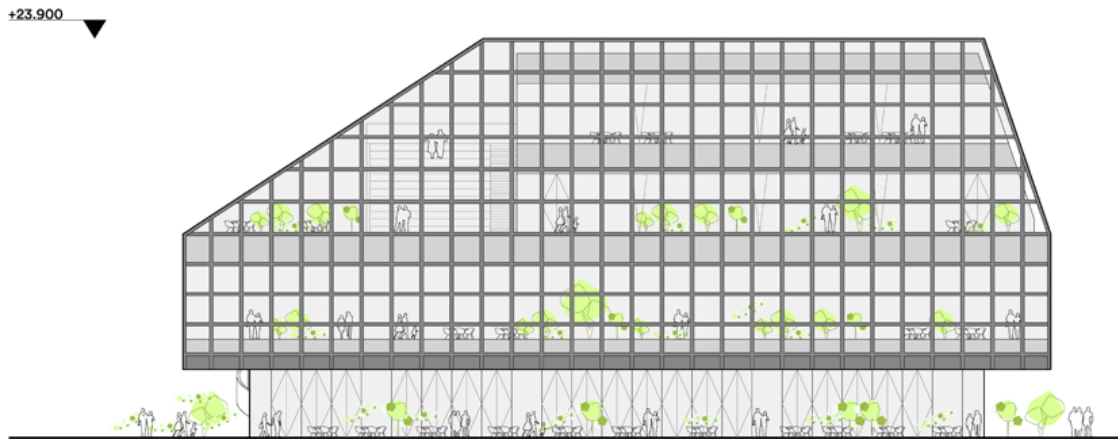


ISSN : 2575-5374

urbanNext Lexicon

Sanya Jinmao Farm Lab: Multi-functional Compound

<https://urbannext.net/sanya-jinmao-farm-lab-multi-functional-compound/>



西立面图
WEST ELEVATION

ISSN : 2575-5374

urbanNext Lexicon

Sanya Jinmao Farm Lab: Multi-functional Compound
<https://urbannext.net/sanya-jinmao-farm-lab-multi-functional-compound/>

ISSN : 2575-5374