

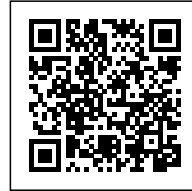
urbanNext Lexicon

Ryerson University SLC
<https://urbannext.net/ryerson-university-slc/>



RYERSON UNIVERSITY SLC

Posted on February 24, 2016 by Urban UrbanNext



Categories: [High Density](#), [Project](#), [Snøhetta](#), [Technology and fabrication](#), [Zeidler Partnership Architects](#)

Tags: [Active Building](#), [Aluminum skin](#), [Building](#), [Concrete](#), [Facilities](#), [Hand-folded metal panels](#), [Interaction](#), [Light](#), [Multifunctional building](#), [Multifunctional space](#), [New York](#), [Project](#), [Social environment](#), [Technological Approach](#), [Urban environment](#)

ISSN : 2575-5374

urbanNext Lexicon

Ryerson University SLC

<https://urbannext.net/ryerson-university-slc/>

With the fall semester in full swing, Ryerson University students are making good use of the newest building on campus: the Student Learning Centre (SLC). Inspired by the historical gathering spaces of the Stoas and Agoras in ancient Greece where learning was inherently social, the lively SLC gives students eight uniquely-designed floors of generous space to meet, study, and exchange ideas. Conceived as a library without books, the design develops natural conditions for groups of people to interact while also offering areas for controlled and introspective study. Most importantly, it encourages students to make the space their own. The SLC is a library built for the digital age that encourages students to interact with their physical environment. Since its opening, the new campus landmark has become a popular hub filled with student activity from 7 AM to 1 AM each day.

ISSN : 2575-5374

urbanNext Lexicon

Ryerson University SLC
<https://urbannext.net/ryerson-university-slc/>



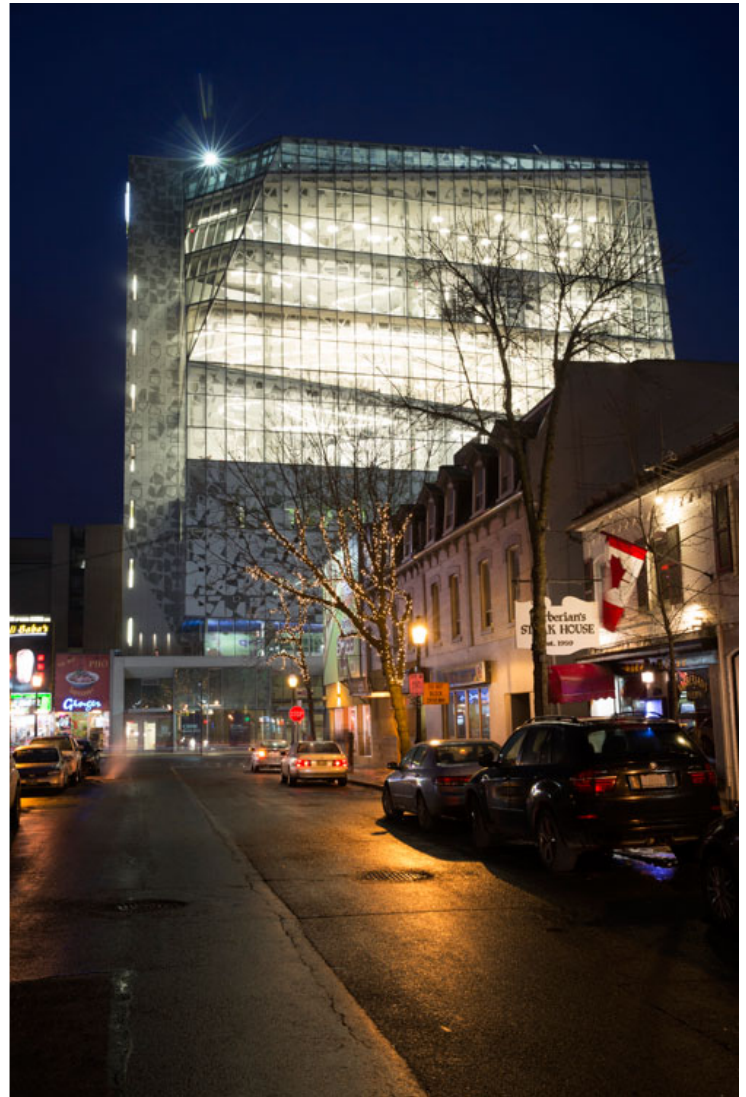
ISSN : 2575-5374

urbanNext Lexicon

Ryerson University SLC

<https://urbannext.net/ryerson-university-slc/>

The design begins with a south-facing raised platform that opens the street corner for a broad range of pedestrian activity, from larger gatherings to smaller individual seating areas. Part plaza, part porch, this elevated space creates a welcoming yet protected urban edge shared by students and the general public that both exhibits University life while giving students a place to view the city. Situated on the Yonge Street retail corridor, one of Canada's best-known commercial avenues, the new building prominently displays shops along Yonge Street, maintaining the retail presence locals expect in the district.



ISSN : 2575-5374

urbanNext Lexicon

Ryerson University SLC

<https://urbannext.net/ryerson-university-slc/>

A new campus gateway is shaped by a large canopy clad in iridescent, hand-folded metal panels stretching from the exterior façade into the lobby.



The lobby is defined by a spacious atrium unimpeded by security checkpoints, and houses informal seating areas, a café, and the University's welcome desk for visitors and prospective students. It also acts as a multi-purpose forum with integrated seating and performance technology for events ranging from pep rallies to fashion shows and music performances.

ISSN : 2575-5374

urbanNext Lexicon

Ryerson University SLC
<https://urbannext.net/ryerson-university-slc/>



ISSN : 2575-5374

urbanNext Lexicon

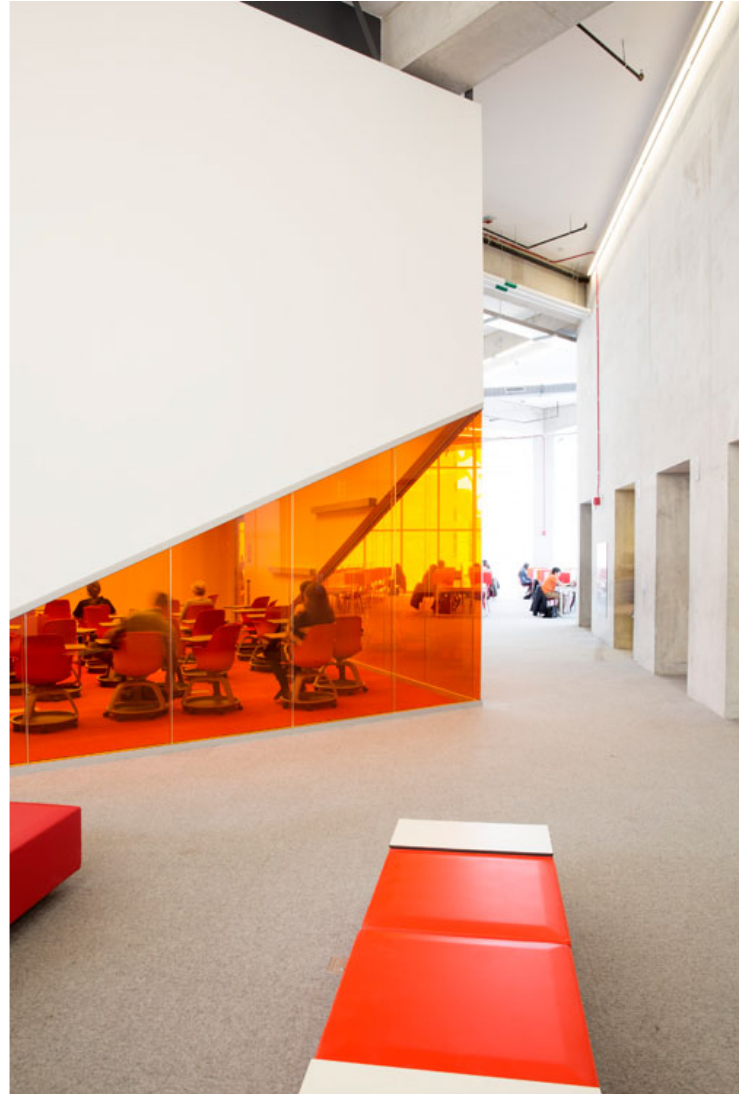
Ryerson University SLC
<https://urbannext.net/ryerson-university-slc/>



ISSN : 2575-5374

urbanNext Lexicon

Ryerson University SLC
<https://urbannext.net/ryerson-university-slc/>



Each floor of the building offers a different kind of space with a unique atmosphere, inspired by themes found in nature. The sixth floor, known as 'The Beach,' is an open and informal study area that slopes down through a series of ramps and terraces, encouraging students to sit on the floor and move the casual furniture.

ISSN : 2575-5374

urbanNext Lexicon

Ryerson University SLC
<https://urbannext.net/ryerson-university-slc/>



'The Garden' provides a range of learning programs, with classrooms, student services, and traditional quiet study areas.

'The Sun' provides classroom spaces that students are free to reserve through an online system.

'The Sky' occupies the top floor of the building with an up-lifting ceiling that offers broad overlooks and access to natural light.

ISSN : 2575-5374

urbanNext Lexicon

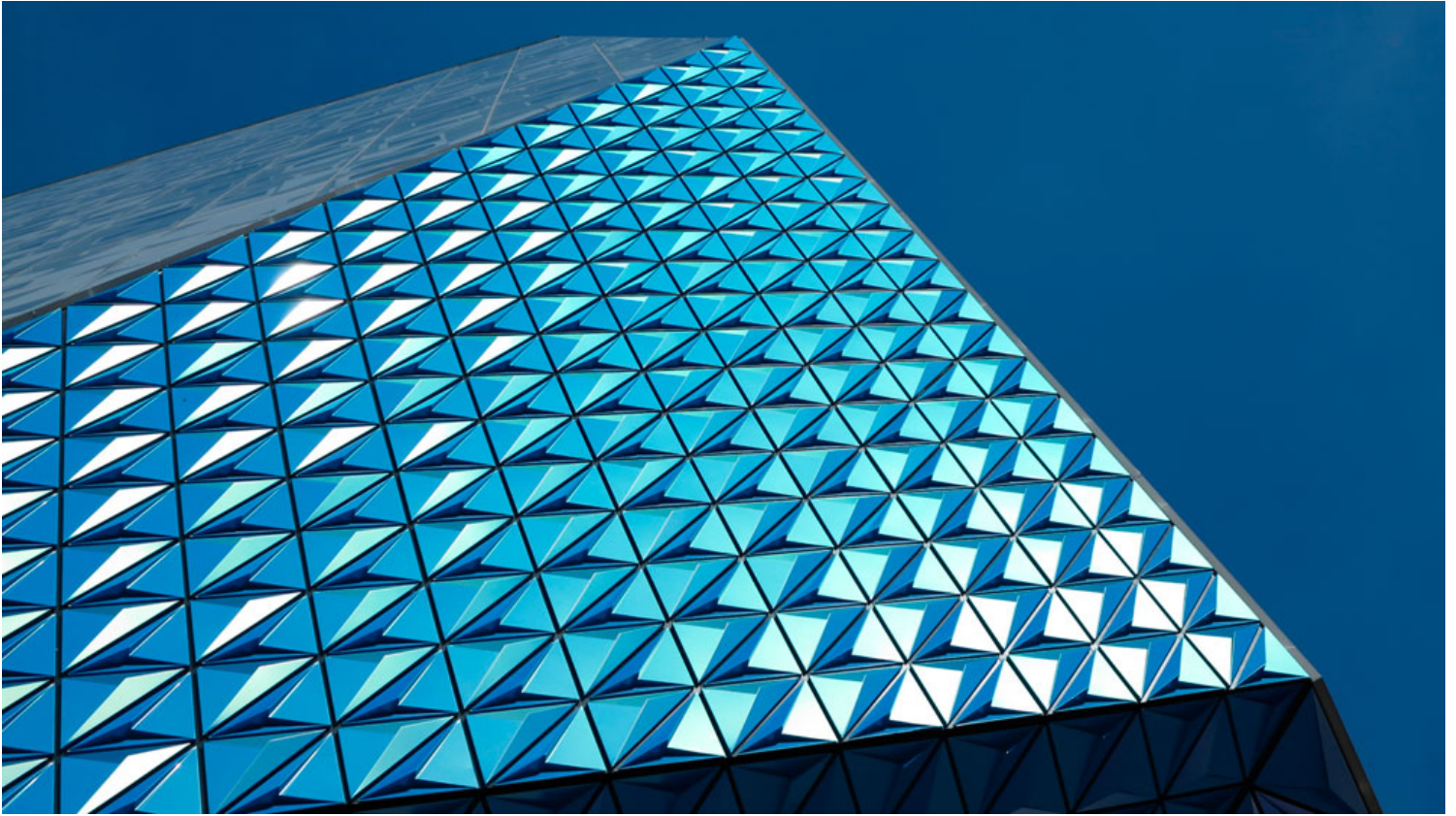
Ryerson University SLC
<https://urbannext.net/ryerson-university-slc/>



ISSN : 2575-5374

urbanNext Lexicon

Ryerson University SLC
<https://urbannext.net/ryerson-university-slc/>



The facades of the building are composed of a digitally-printed fritted glass that envelops the rugged armature and pared-down aesthetic of the exposed concrete structure. The varying façade pattern controls heat gain into the building and frames views of the city grid and nearby buildings from the interior, acting as a traditional framed window without actual frame constructions.

ISSN : 2575-5374

urbanNext Lexicon

Ryerson University SLC
<https://urbannext.net/ryerson-university-slc/>



Functioning like cloud cover, the frit modulates the light quality to range from 'overcast' to 'partly cloudy' to 'sunny' to further diversify the interior conditions and allow students to have a different experience every time they visit the building.



From autumn to spring, midterms through final exams, students will continue to create their own

ISSN : 2575-5374

urbanNext Lexicon

experiences and memories out of this library of the future.



Section



Plans

urbanNext Lexicon

Ryerson University SLC
<https://urbannext.net/ryerson-university-slc/>

ISSN : 2575-5374