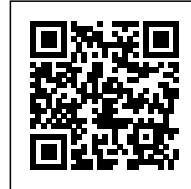


NURSERY IN BUHL

Posted on June 11, 2016 by urbanNext



Categories: [Dominique Coulon & Associés](#), [Middle Density](#), [Project](#), [Technology and fabrication](#)

Tags: [Architecture&nature](#), [Buhl](#), [Concrete](#), [Educational Building](#), [Facilities](#), [France](#), [Natural dialogue](#), [Natural metaphor](#), [Pigmented Concrete](#), [Project](#), [Public buildings](#), [Rural environment](#), [Technological Approach](#)

urbanNext Lexicon

Nursery in Buhl

<https://urbannext.net/nursery-in-buhl/>

The building marks the entrance to a small village, nestled in a valley in Alsace. A 14th-century castle dominates the site from the nearby hillside. The day nursery echoes the orthonormal geometry of the fortified castle. A perimeter wall with openings like in a castle wall protects the children's playgrounds. This spatial arrangement offers views of the rounded outlines of the Vosges mountains.



ISSN : 2575-5374

urbanNext Lexicon

Nursery in Buhl

<https://urbannext.net/nursery-in-buhl/>



ISSN : 2575-5374

urbanNext Lexicon

Nursery in Buhl
<https://urbannext.net/nursery-in-buhl/>



ISSN : 2575-5374

urbanNext Lexicon

Nursery in Buhl

<https://urbannext.net/nursery-in-buhl/>



ISSN : 2575-5374

urbanNext Lexicon

Nursery in Buhl

<https://urbannext.net/nursery-in-buhl/>



The principle of the strictly rectangular plan is an arrangement of successive volumes containing the elements of the project. These layers give depth to the project overall. The heart of the building is formed by a central space which emerges at double height and plays with natural light like a kaleidoscope. This almost cubic volume condenses a host of colored surfaces ranging from pink to

ISSN : 2575-5374

urbanNext Lexicon

Nursery in Buhl

<https://urbannext.net/nursery-in-buhl/>

red. The matte and shiny colors resonate, shaping the space to make it richer and more subtle.

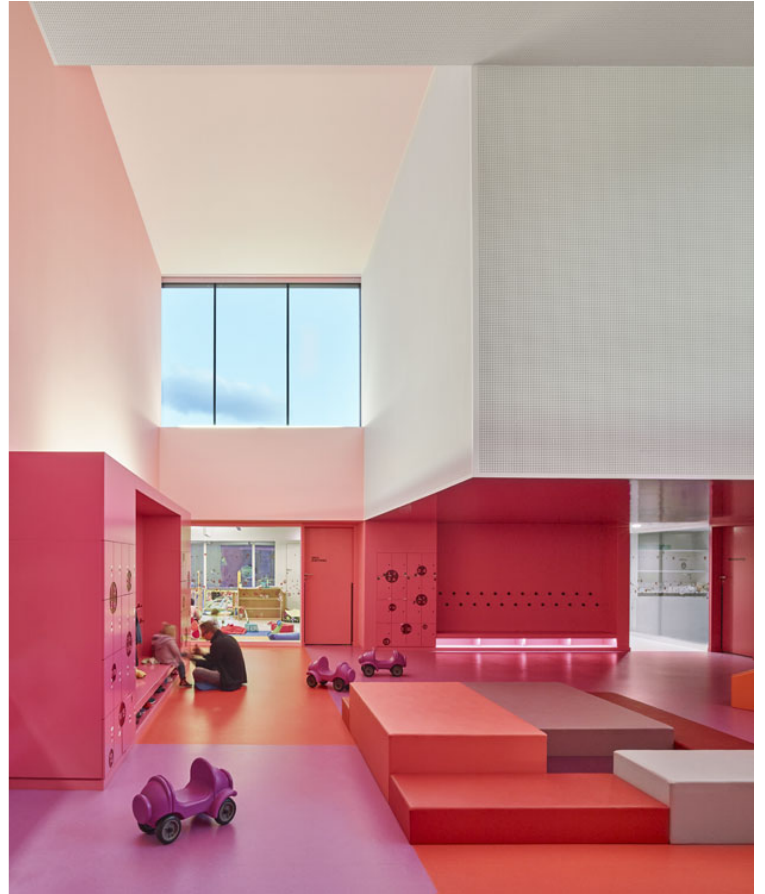


ISSN : 2575-5374

urbanNext Lexicon

Nursery in Buhl

<https://urbannext.net/nursery-in-buhl/>

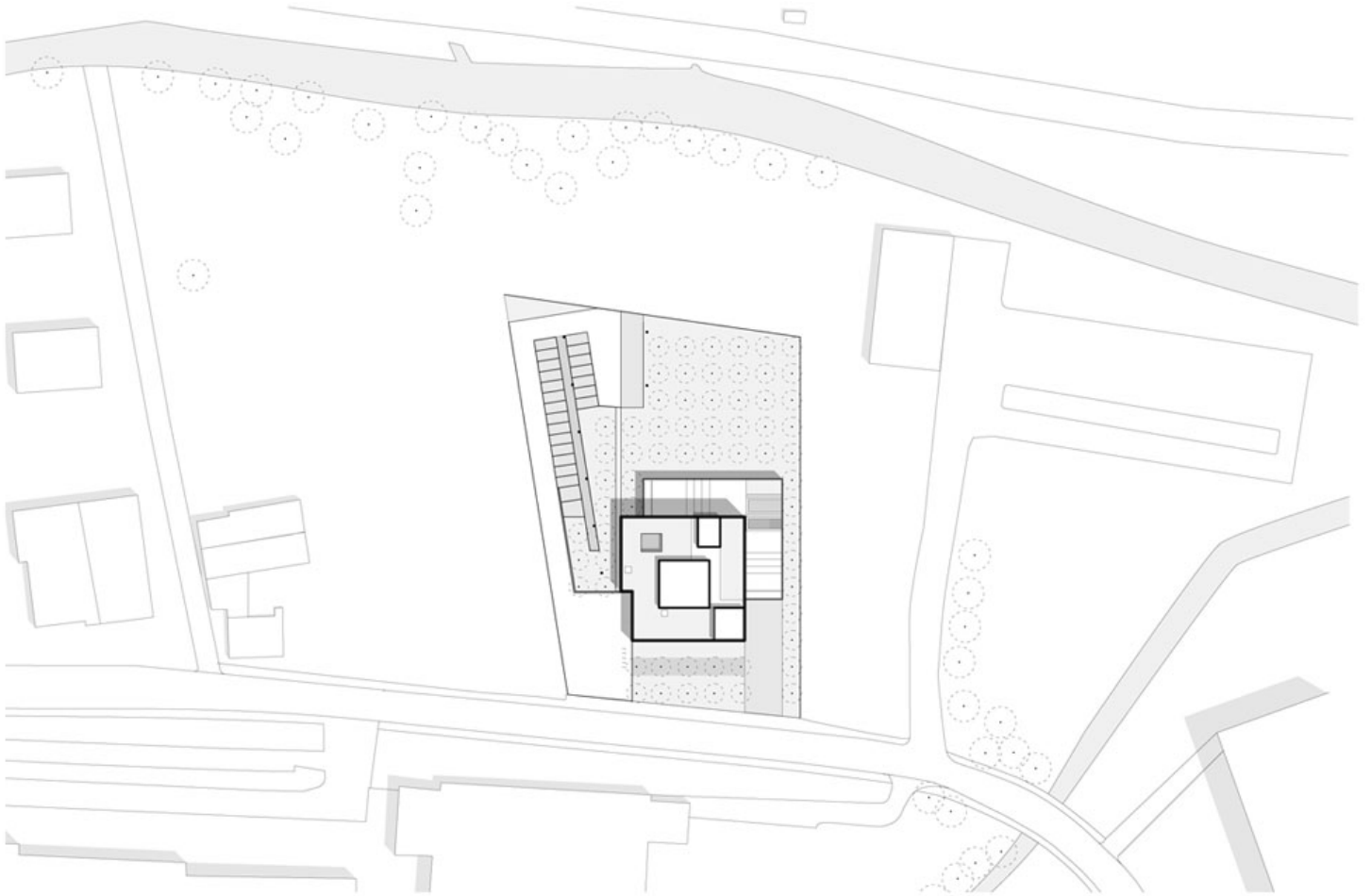


The multiple transparencies installed between the different layers give an indication of the depth of the building. There is abundant natural light throughout, captured by skylights emerging from the overall volume. The building appears in the landscape like a fragmented monolith where the play of solids and hollows is reminiscent of something like a Lego model of a castle. The building is surrounded by sixty-eight apple trees which hark back to the local agricultural landscape.

ISSN : 2575-5374

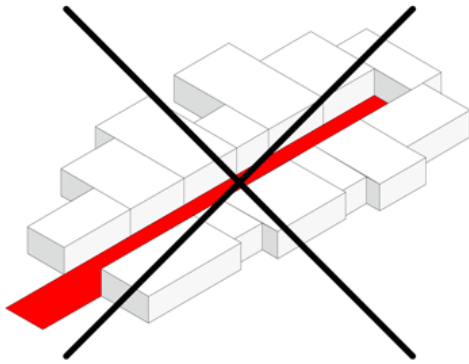
urbanNext Lexicon

Nursery in Buhl
<https://urbannext.net/nursery-in-buhl/>

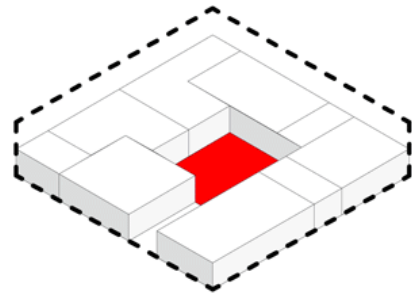


Site Plan

ISSN : 2575-5374



linear layout = dispersion



distribution hall = compacity

Diagrams

urbanNext Lexicon

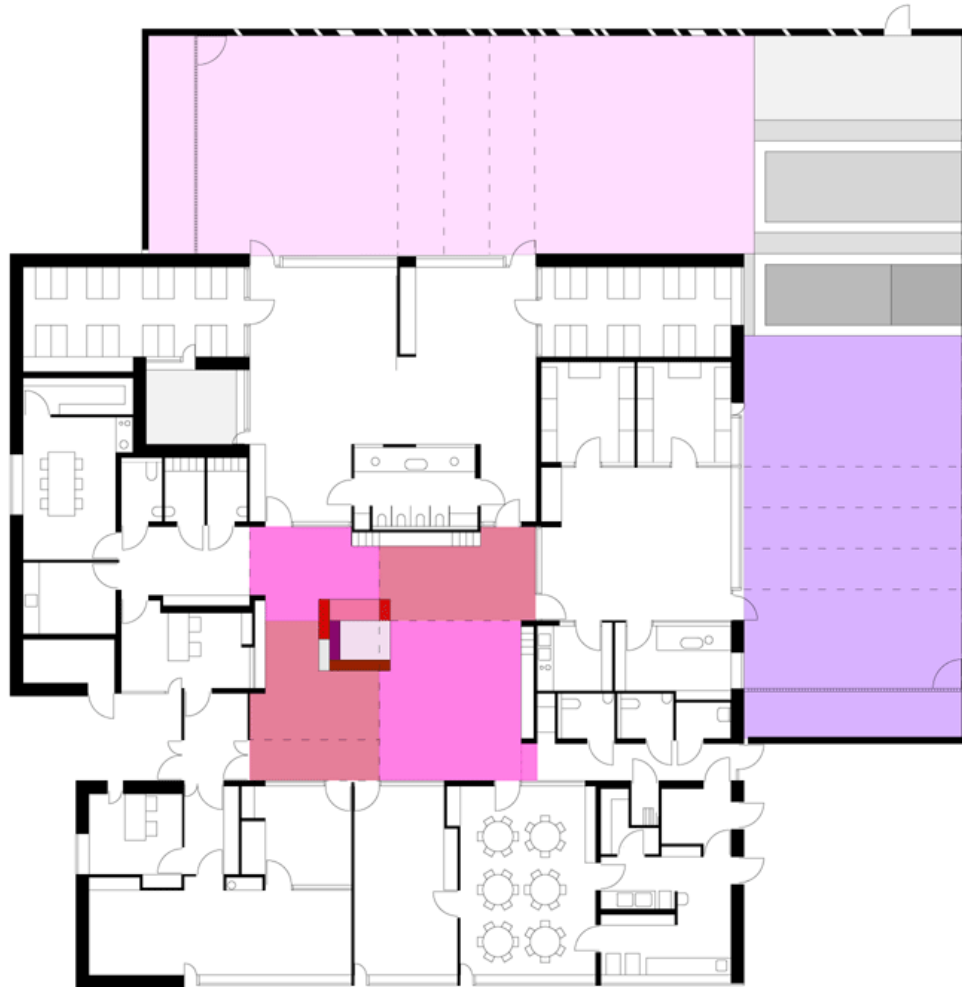
Nursery in Buhl
<https://urbannext.net/nursery-in-buhl/>

ISSN : 2575-5374

urbanNext Lexicon

Nursery in Buhl
<https://urbannext.net/nursery-in-buhl/>

ISSN : 2575-5374



Plans

urbanNext Lexicon

Nursery in Buhl
<https://urbannext.net/nursery-in-buhl/>

ISSN : 2575-5374