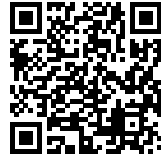




MUNICIPAL OFFICES AND TRAIN STATION

Posted on April 13, 2017 by content



Categories: [Energy and sustainability](#), [Mecanoo](#), [Middle Density](#), [Project](#), [Territory and mobility](#), [Urban Paradigms](#)

Tags: [Bioclimatic façade](#), [Civil infrastructure](#), [Compact building](#), [Controlled ventilation](#), [Delft](#), [Eco Building](#), [Ecological researches](#), [Energetic Approach](#), [Energy consumption](#), [Energy flow](#), [Energy production](#), [Energy saving](#), [Environmental&technological](#), [Functional node](#), [Geothermal system](#), [Glass](#), [Insulation](#), [Mixed-use buildings](#), [Multifunctional building](#), [Office building](#), [Offices](#), [Optimized construction](#), [Project](#), [Railway infrastructure](#), [Renewable energy](#), [Solar Energy](#), [Solar radiation](#), [Territorial Approach](#), [The Netherlands](#), [Urban infrastructure](#), [Waste management](#)

urbanNext Lexicon

Municipal Offices and Train Station

<https://urbannext.net/municipal-offices-and-train-station/>

The station hall and municipal offices form a new landmark in Delft. The complex is located above a new underground train station, with the municipal offices accommodating one thousand employees. When the station is operational, the old railway viaduct that divided the inner city of Delft will make way for an extension of the city centre, a park and canal.



ISSN : 2575-5374

urbanNext Lexicon

Municipal Offices and Train Station

<https://urbannext.net/municipal-offices-and-train-station/>



ISSN : 2575-5374

urbanNext Lexicon

Municipal Offices and Train Station
<https://urbannext.net/municipal-offices-and-train-station/>



ISSN : 2575-5374

urbanNext Lexicon

Municipal Offices and Train Station
<https://urbannext.net/municipal-offices-and-train-station/>



Designed without an apparent front or rear, the glass building is compact and flexible. Incisions in the glass volume echo the networked structure of laneways in the historic city and admit daylight deep into the building. Lowering the roof line at the corners reduces the building height to provide a gradual transition to the surrounding buildings.

ISSN : 2575-5374

urbanNext Lexicon

Municipal Offices and Train Station
<https://urbannext.net/municipal-offices-and-train-station/>



The use of clear glass at the ground level facilitates a close connection between inside and outside. Here, the public zone with the station hall and public lobby is differentiated from the private section with the municipal offices made from transparent and molten glass elements.

ISSN : 2575-5374

urbanNext Lexicon

Municipal Offices and Train Station
<https://urbannext.net/municipal-offices-and-train-station/>



ISSN : 2575-5374

urbanNext Lexicon

Municipal Offices and Train Station
<https://urbannext.net/municipal-offices-and-train-station/>



A ceiling of curved white horizontal strips adorned with a historic map of Delft, in blue, arches above the public lobby and station hall (in collaboration with Geerdes Ontwerpen). The halls are separated by a glass wall and two volumes that house the public counters, consultation rooms and technical services of the municipal offices, and the commercial functions of the station hall.

ISSN : 2575-5374

urbanNext Lexicon

Municipal Offices and Train Station
<https://urbannext.net/municipal-offices-and-train-station/>



ISSN : 2575-5374

urbanNext Lexicon

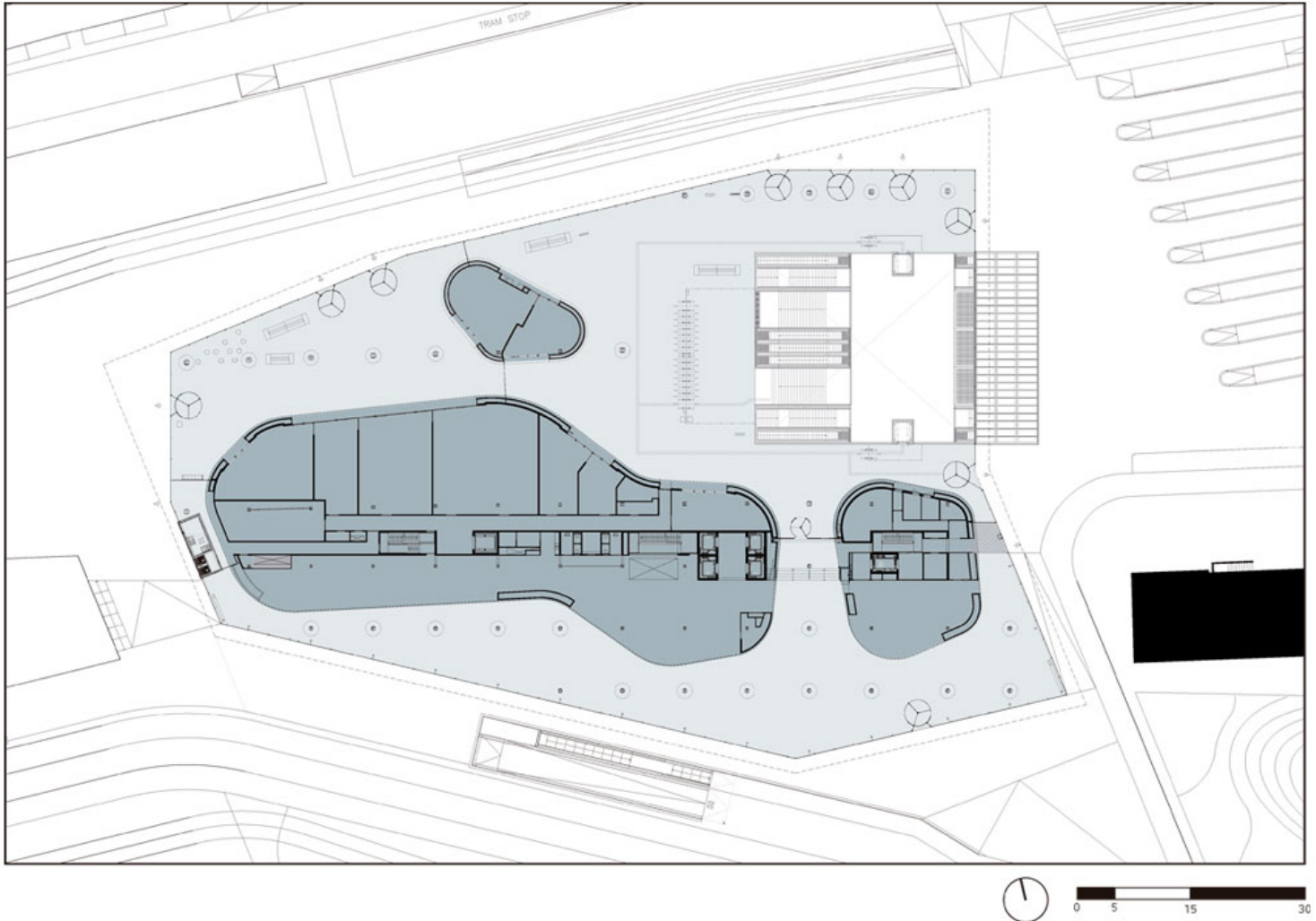
Municipal Offices and Train Station
<https://urbannext.net/municipal-offices-and-train-station/>



ISSN : 2575-5374

urbanNext Lexicon

Municipal Offices and Train Station
<https://urbannext.net/municipal-offices-and-train-station/>

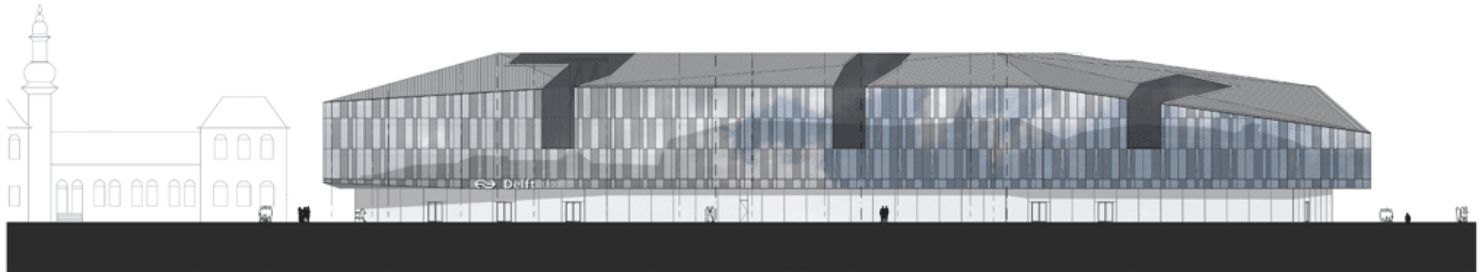
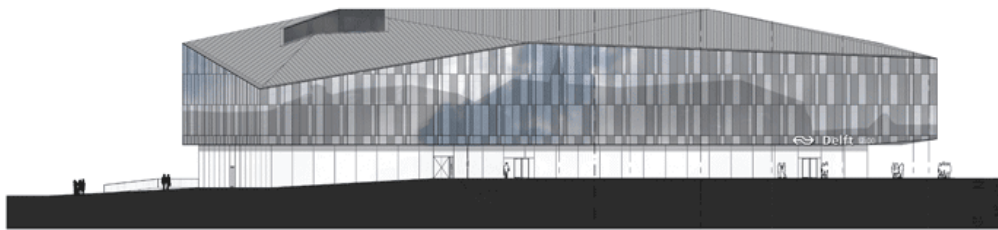
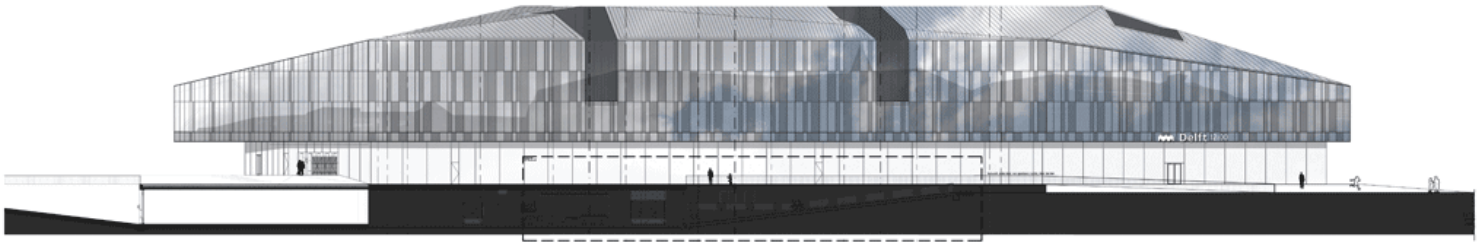


Groundfloor Plan

ISSN : 2575-5374

urbanNext Lexicon

Municipal Offices and Train Station
<https://urbannext.net/municipal-offices-and-train-station/>



Elevations

ISSN : 2575-5374

urbanNext Lexicon

Municipal Offices and Train Station
<https://urbannext.net/municipal-offices-and-train-station/>



ISSN : 2575-5374

urbanNext Lexicon

Municipal Offices and Train Station
<https://urbannext.net/municipal-offices-and-train-station/>

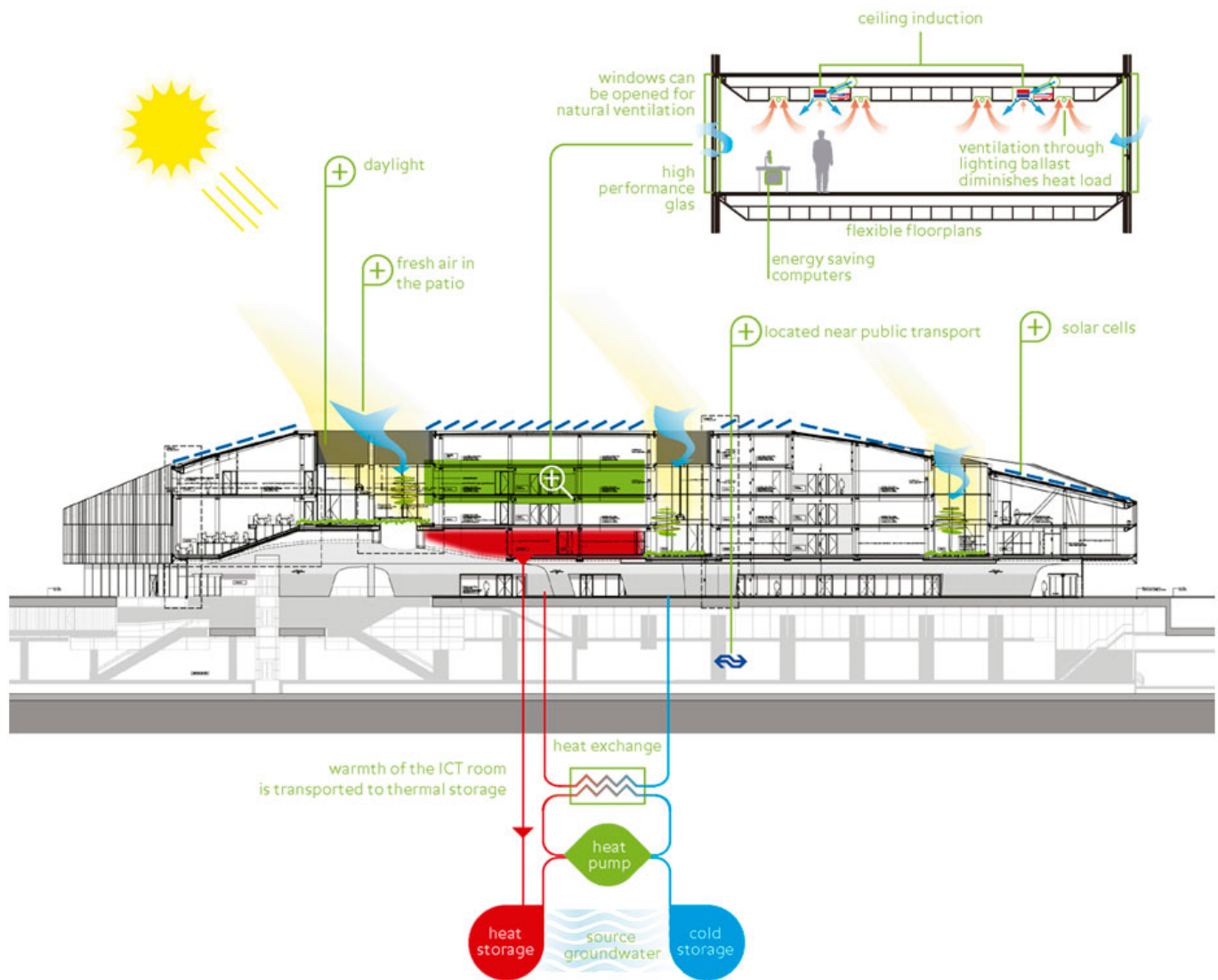


The facilities are organised so that travellers can immediately glimpse the historic city from the station hall. Measures including a geothermal heat pump and an optimal façade design, featuring highly insulated glazing, provide a 35% reduction in energy use from prescribed requirements. The building also accommodates solar panels on the roof that can generate a minimum of 20% of the building's energy needs.

ISSN : 2575-5374

urbanNext Lexicon

Municipal Offices and Train Station
<https://urbannext.net/municipal-offices-and-train-station/>



Sustainable approach:

- Compact building mass for optimal relation between floor surface and façade surface.
- Facade 60% closed, shadow box 40% open for optimisation of relation between daylight entrance and warmth transmission.
- Greencalc+ score building index 273, epc = 0,66.

ISSN : 2575-5374

urbanNext Lexicon

Municipal Offices and Train Station

<https://urbannext.net/municipal-offices-and-train-station/>

- Short building time through prefabrication.
- Daylight dependent switch lighting.
- Ventilation system with re-use of waste heat.
- View to the outside and to green.
- Waste recycling center.



ISSN : 2575-5374

