



## KTH SCHOOL OF ARCHITECTURE

*Posted on May 3, 2016 by Urban UrbanNext*



---

**Categories:** [Middle Density](#), [Project](#),  
[Technology and fabrication](#), [Tham & Videgård  
Arkitekter](#)

**Tags:** [Bricks](#), [Building](#), [Circulation](#), [Concrete](#),  
[Corten steel](#), [Educational Building](#), [Facilities](#),  
[Glass](#), [Metaphor](#), [Project](#), [Public buildings](#),  
[Stockholm](#), [Sweden](#), [Technological Approach](#),  
[Wooden panels](#)

# urbanNext Lexicon

KTH School of Architecture

<https://urbannext.net/kth-school-architecture/>

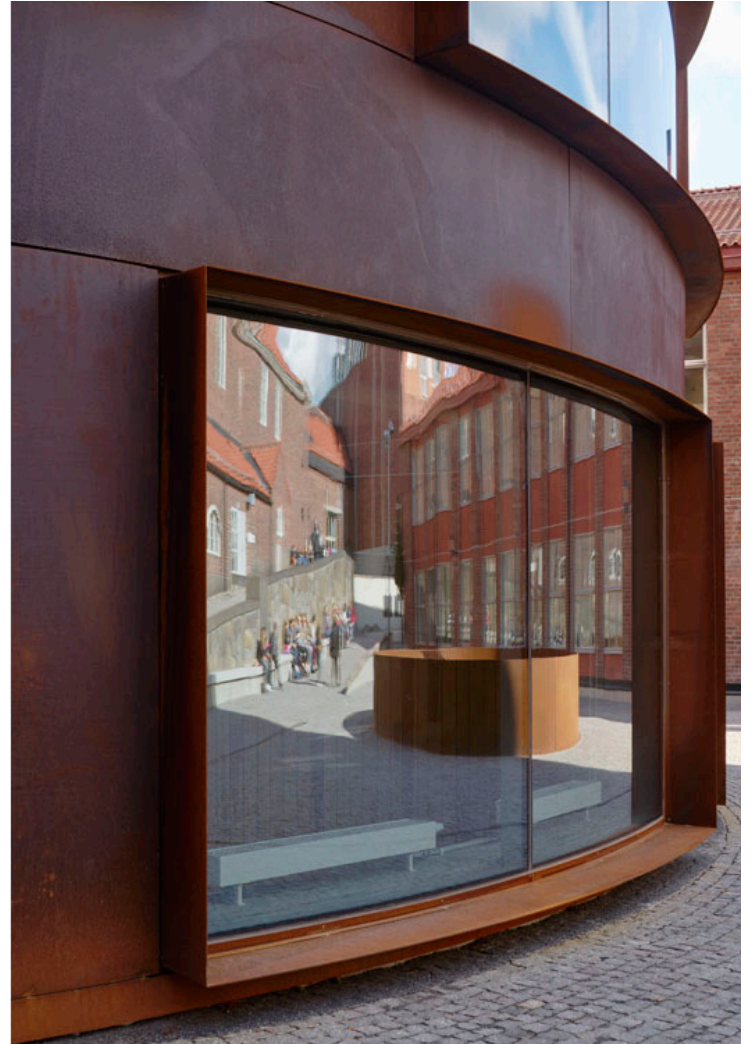
The site on the KTH campus, with its very tangible cultural and historical context and its physical limitations, could be described as the opposite of a blank slate (*tabula rasa*). The new school is inserted into an existing courtyard space with existing pathways and is located adjacent to Erik Lallerstedt's original and quite monumental brick buildings from the early twentieth century.



ISSN : 2575-5374

# urbanNext Lexicon

KTH School of Architecture  
<https://urbannext.net/kth-school-architecture/>

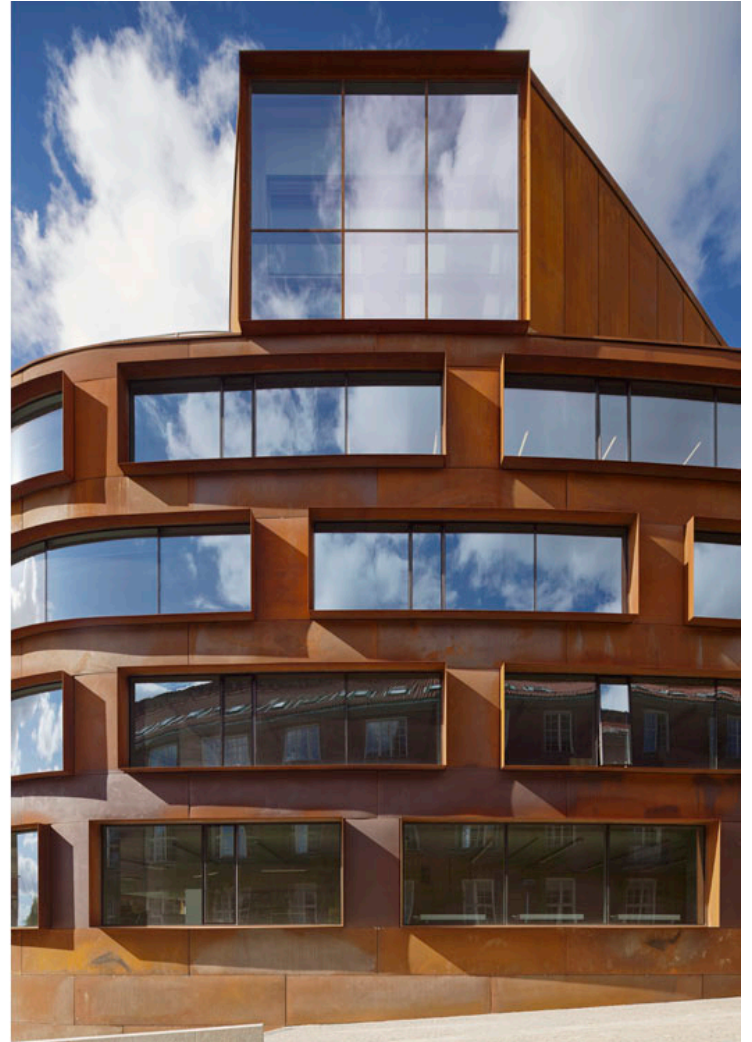


ISSN : 2575-5374



# urbanNext Lexicon

KTH School of Architecture  
<https://urbannext.net/kth-school-architecture/>



Based on the logic of a free campus layout that encourages movement, the idea is to accommodate and encourage circulation within the building and all around it as a way of thoroughly integrating and anchoring the new school to the site. With its rounded contours and a total of six floors, the school building includes a sunken garden and a roof terrace, while cultivating the character of the courtyard as one continuous space. The deep red Corten steel exterior relates to the dark red brick of existing buildings.

ISSN : 2575-5374

# urbanNext Lexicon

KTH School of Architecture  
<https://urbannext.net/kth-school-architecture/>



ISSN : 2575-5374



# urbanNext Lexicon

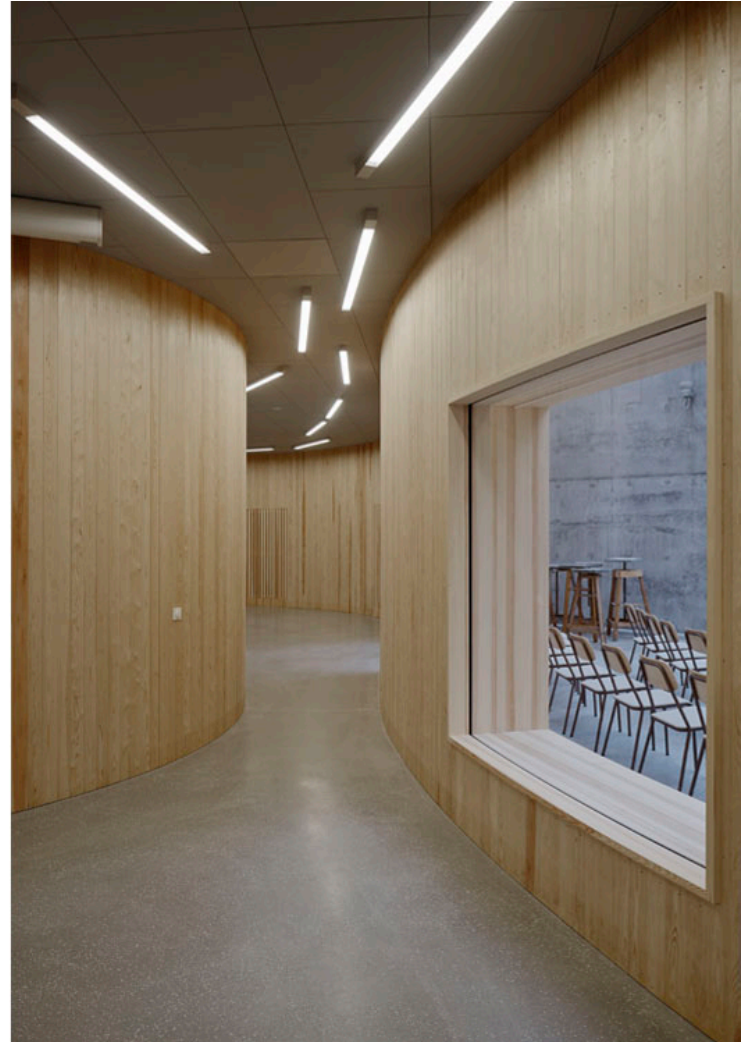
KTH School of Architecture  
<https://urbannext.net/kth-school-architecture/>



ISSN : 2575-5374

# urbanNext Lexicon

KTH School of Architecture  
<https://urbannext.net/kth-school-architecture/>

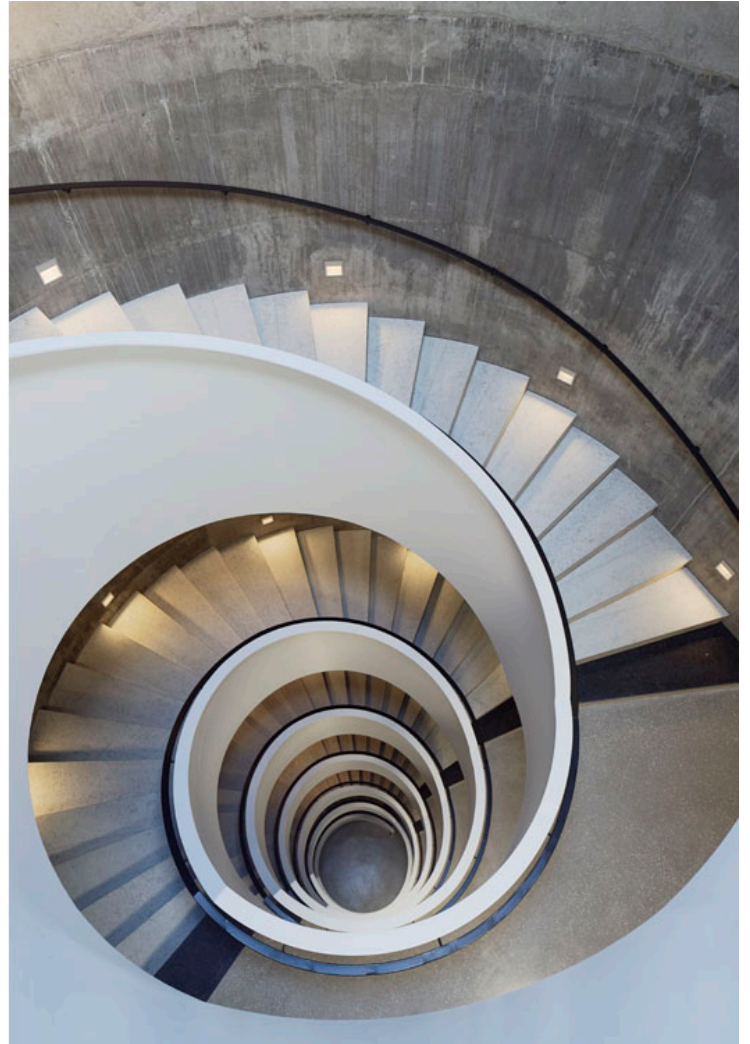


ISSN : 2575-5374



# urbanNext Lexicon

KTH School of Architecture  
<https://urbannext.net/kth-school-architecture/>



The interior is designed to be robust and flexible. Curving walls create a free flow of contiguous space that enhances the sense of openness rather than enclosure. Views and paths are extended through the structure, with spatial conditions more akin to a landscape than a traditional institutional building. At the entrance level a series of double-height spaces, the atelier and exhibition area, designate a generous main entrance that also doubles as an open lecture hall. It takes the form of a broad passage meandering through the building.

ISSN : 2575-5374



# urbanNext Lexicon

KTH School of Architecture  
<https://urbannext.net/kth-school-architecture/>

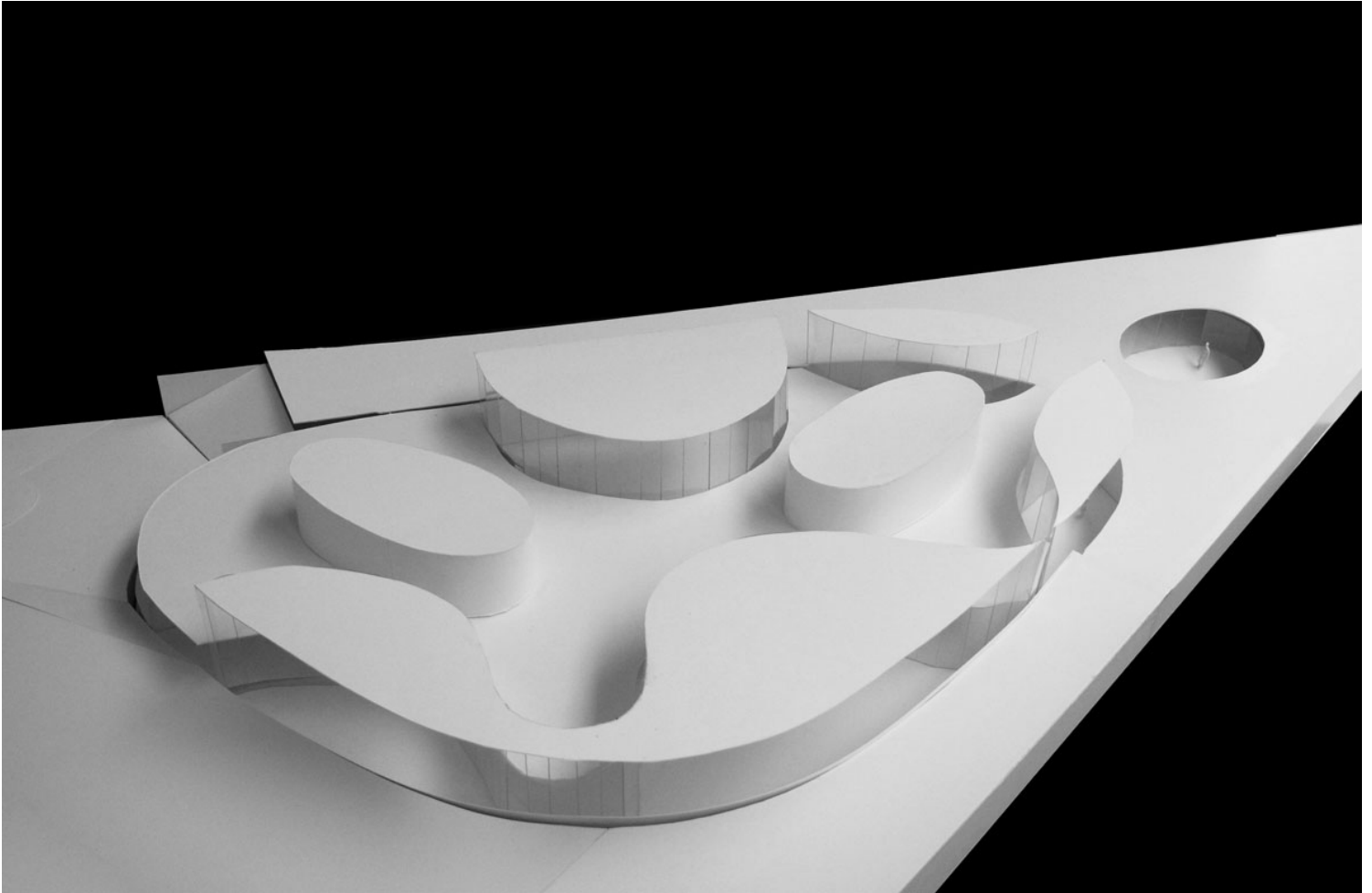


**Siteplan**

ISSN : 2575-5374

# urbanNext Lexicon

KTH School of Architecture  
<https://urbannext.net/kth-school-architecture/>



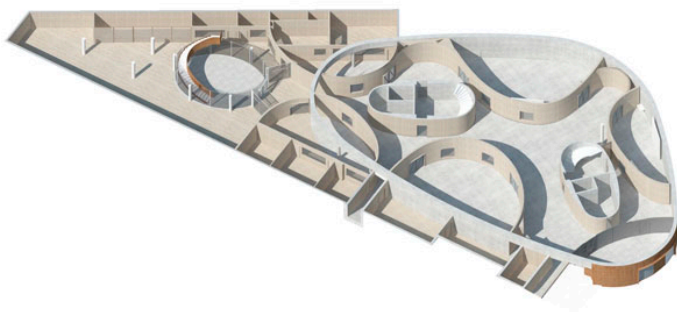
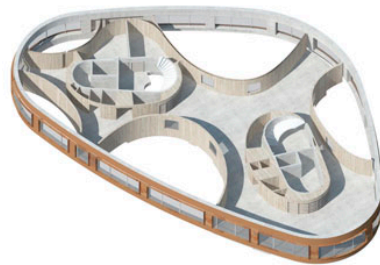
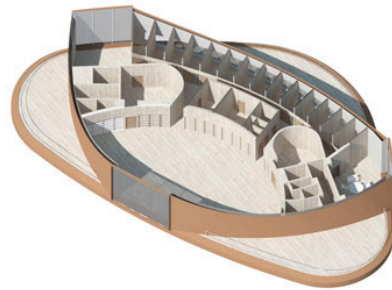
**First Floor Model**

ISSN : 2575-5374



# urbanNext Lexicon

KTH School of Architecture  
<https://urbannext.net/kth-school-architecture/>



ISSN : 2575-5374

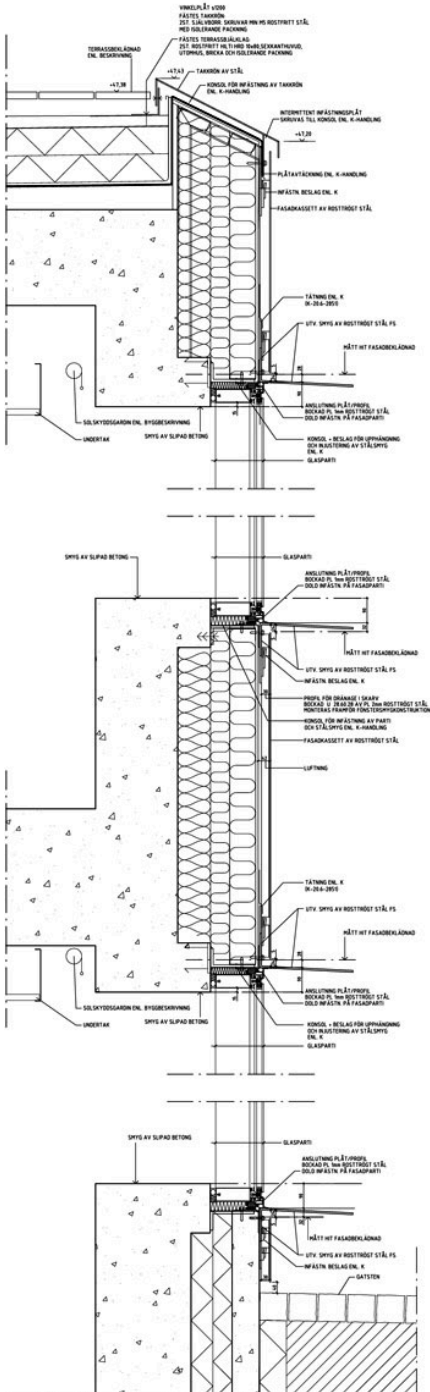
## **Axometric View**

A deep floor plan creates an opportunity for extensive use of glass in the surfaces of the façade. It endows the building with a high degree of generality, offering lavish amounts of light and transparency, while facilitating climate control and energy efficiency for the whole building.



# urbanNext Lexicon

KTH School of Architecture  
<https://urbannext.net/kth-school-architecture/>



ISSN : 2575-5374

# urbanNext Lexicon

KTH School of Architecture  
<https://urbannext.net/kth-school-architecture/>

## Façade Detail

ISSN : 2575-5374



# urbanNext Lexicon

KTH School of Architecture  
<https://urbannext.net/kth-school-architecture/>

ISSN : 2575-5374