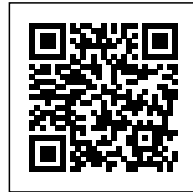




## GIBOIRE OFFICES: RESTRUCTURING A CORNER BUILDING

*Posted on May 11, 2021 by martabuges*



**Categories:** [a/LTA](#), [Middle Density](#), [Project](#), [Technology and fabrication](#), [Urban Paradigms](#)

**Tags:** [Construction](#), [France](#), [Glazed façade](#), [Interior design](#), [Performative Envelope](#), [Project](#), [Refurbishment](#), [Vannes](#), [Working Space](#)

# urbanNext Lexicon

Giboire Offices: Restructuring a Corner Building  
<https://urbannext.net/giboire-offices/>

This project involves the heavy restructuring of a corner building located at the intersection of rue Thiers and rue Carnot, in the heart of the historic center of the city of Vannes.



The existing building, ground floor + 2 plus attic, was a bank that we transformed into offices for Groupe Giboire. The aim is to set up a new commercial and real estate development agency. The location of the project is remarkable: close to the port, it is backed by the city walls dating from the

ISSN : 2575-5374

# urbanNext Lexicon

Giboire Offices: Restructuring a Corner Building  
<https://urbannext.net/giboire-offices/>

4th century.

The original structure of the building has been preserved, except for the attic which has been given a new style. The first floor "catches up" with an alignment on the street. Large openings are created to provide views of the ramparts located in the court. The façade is clad with stainless steel cladding that is also found on the attic.



Given the original configuration at an angle (providing a real response to the articulation of the two

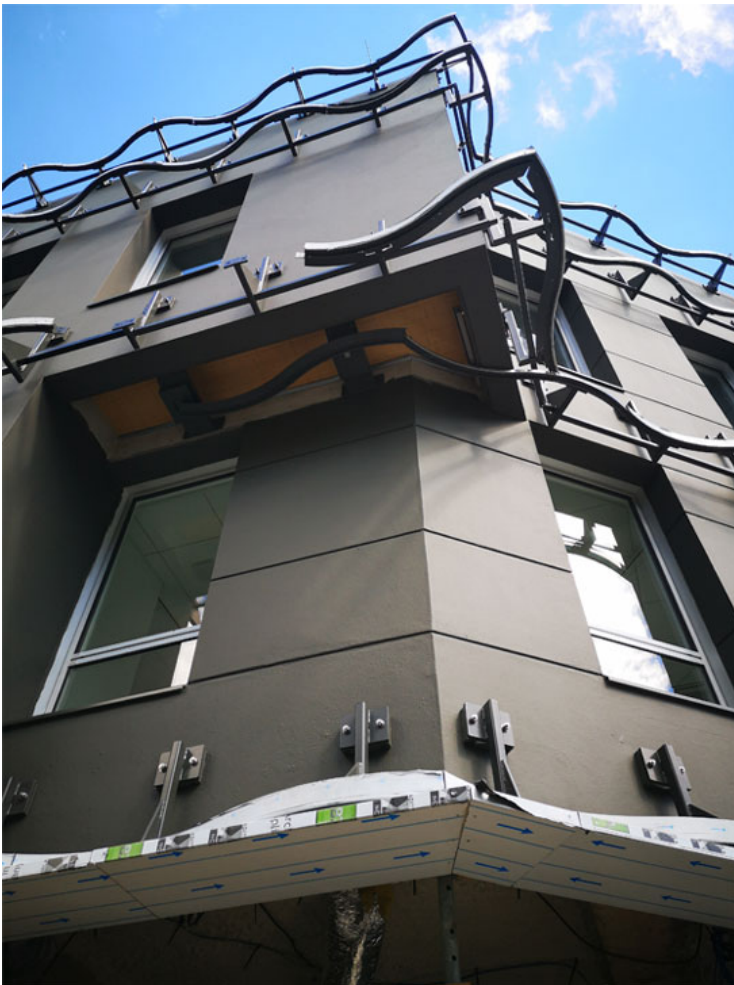
ISSN : 2575-5374

# urbanNext Lexicon

Giboire Offices: Restructuring a Corner Building  
<https://urbannext.net/giboire-offices/>

streets), and the complexity of the structure of the existing façade, the design focused on the sobriety and finesse of the materiality. For this reason, the mineral façade was highlighted by a second curved glass skin located on the two intermediate levels.

The combination of glass and stainless steel envelops the building and delicately slides it into the historic heart of the city. The redesigned façade plays with the reflections of the city as well as those of the sky, which vary according to the time of day.



The glass panels that make up this pleated structure are supported by stainless steel rails. An anodized aluminum frame allows for natural ventilation of this double skin. The upper part of this

ISSN : 2575-5374

# urbanNext Lexicon

Giboire Offices: Restructuring a Corner Building  
<https://urbannext.net/giboire-offices/>

frame, which constitutes the acroterion, is made up of removable panels that make its maintenance possible.



The interior design was guided by the idea of transparency and luminosity. The attic of the building hosts a large meeting room that gives access to a terrace with a view of the city and the port.

ISSN : 2575-5374

# urbanNext Lexicon

Giboire Offices: Restructuring a Corner Building  
<https://urbannext.net/giboire-offices/>

ISSN : 2575-5374