



ASI REISEN HEADQUARTERS: INSPIRED BY A SYMBIOSIS BETWEEN NATURE AND HUMANITY

Posted on September 8, 2020 by martabuges



Categories: [Designing Matter](#), [Energy and sustainability](#), [Low Density](#), [Project](#), [Snøhetta](#)

Tags: [Architecture&nature](#), [Austria](#), [Bioclimatic façade](#), [Biodiversity](#), [Carbon footprint](#), [Comfort](#), [Community](#), [Efficiency](#), [Energy consumption](#), [Greenery](#), [High-end technologies](#), [Interior design](#), [Living system](#), [Low-energy building](#), [Low-tech building](#), [Micro-environment](#), [Natural materials](#), [Open Space](#), [Optimized construction](#), [Project](#), [Sensors](#), [Sustainable](#), [Sustainable construction](#), [Timber](#), [Timber frame](#), [Timber Structure](#), [Vertical greenery](#), [Wood construction](#), [Working Space](#)

urbanNext Lexicon

ASI Reisen Headquarters: Inspired by a Symbiosis Between
Nature and Humanity

<https://urbannext.net/asi-reisen-headquarters/>

When developing its new head office, the international trekking and adventure travel company ASI Reisen sought to have its new space reflect the company's working culture and commitment to offering sustainable trekking experiences for travelers around the world. Situated in Natters, just south of Innsbruck, Austria, this new timber building with an open office concept offers several solutions that will enable the long-term low environmental footprint of the office space. Inspired by a symbiosis between nature and humanity, the design concept was developed together with ASI Reisen's employees and the design team from Snøhetta.



Surrounded by a lush exterior, the four-story timber structure combines timber frame construction

ISSN : 2575-5374

urbanNext Lexicon

ASI Reisen Headquarters: Inspired by a Symbiosis Between

Nature and Humanity

<https://urbannext.net/asi-reisen-headquarters/>

with solid wooden elements to optimize material use and allow for the greatest amount of open floor plans. In addition to the open office concept and sustainable construction methods, the building features an optimized and sustainable energy concept, based on a combination of high-tech and low-tech solutions.



For humans to continue to live and thrive on this planet, the buildings we inhabit and spend most of our lives in need to be built with as much consideration for natural preservation and energy efficiency as for comfort. "With its resource-saving timber construction and sophisticated sustainable energy concept, the new ASI headquarters marks an inspiration for responsibly constructing our homes and office spaces for the future. At the same time, the new office space

ISSN : 2575-5374

offers a pleasant and modern working atmosphere for its employees," explains Patrick Lüth, Managing Director of Snøhetta's studio in Innsbruck.

urbanNext Lexicon

ASI Reisen Headquarters: Inspired by a Symbiosis Between
Nature and Humanity
<https://urbannext.net/asi-reisen-headquarters/>

ISSN : 2575-5374

urbanNext Lexicon

ASI Reisen Headquarters: Inspired by a Symbiosis Between

Nature and Humanity

<https://urbannext.net/asi-reisen-headquarters/>



A Lush Façade

A “green curtain” of climbing plants growing on a suspended metal frame covers the blackened wooden façade, ensuring the building blends harmoniously into its verdant forest surroundings. Composed of 17 different warm weather and evergreen species growing in big planters, this green

ISSN : 2575-5374

urbanNext Lexicon

ASI Reisen Headquarters: Inspired by a Symbiosis Between

Nature and Humanity

<https://urbannext.net/asi-reisen-headquarters/>

curtain also serves as a glare shield and for shading the generous glass surfaces. On the western side, the employees can use this metal frame as a balcony. The 118 climbing plants change the appearance of the façade throughout the year and thus also adapt to seasonal thermal insulation needs. The microclimate created by this green buffer zone reduces the energy required for cooling the building.



For the façade, a traditional Japanese method of wood preservation, known as yakisugi, was used. Slightly charred and thus carbonized, the façade is both waterproof and durable without the need for further painting, while also protecting against insects. The basement and the building core are made of reinforced concrete. Wood was also used for the mullion-transom-façade, the windows,

ISSN : 2575-5374

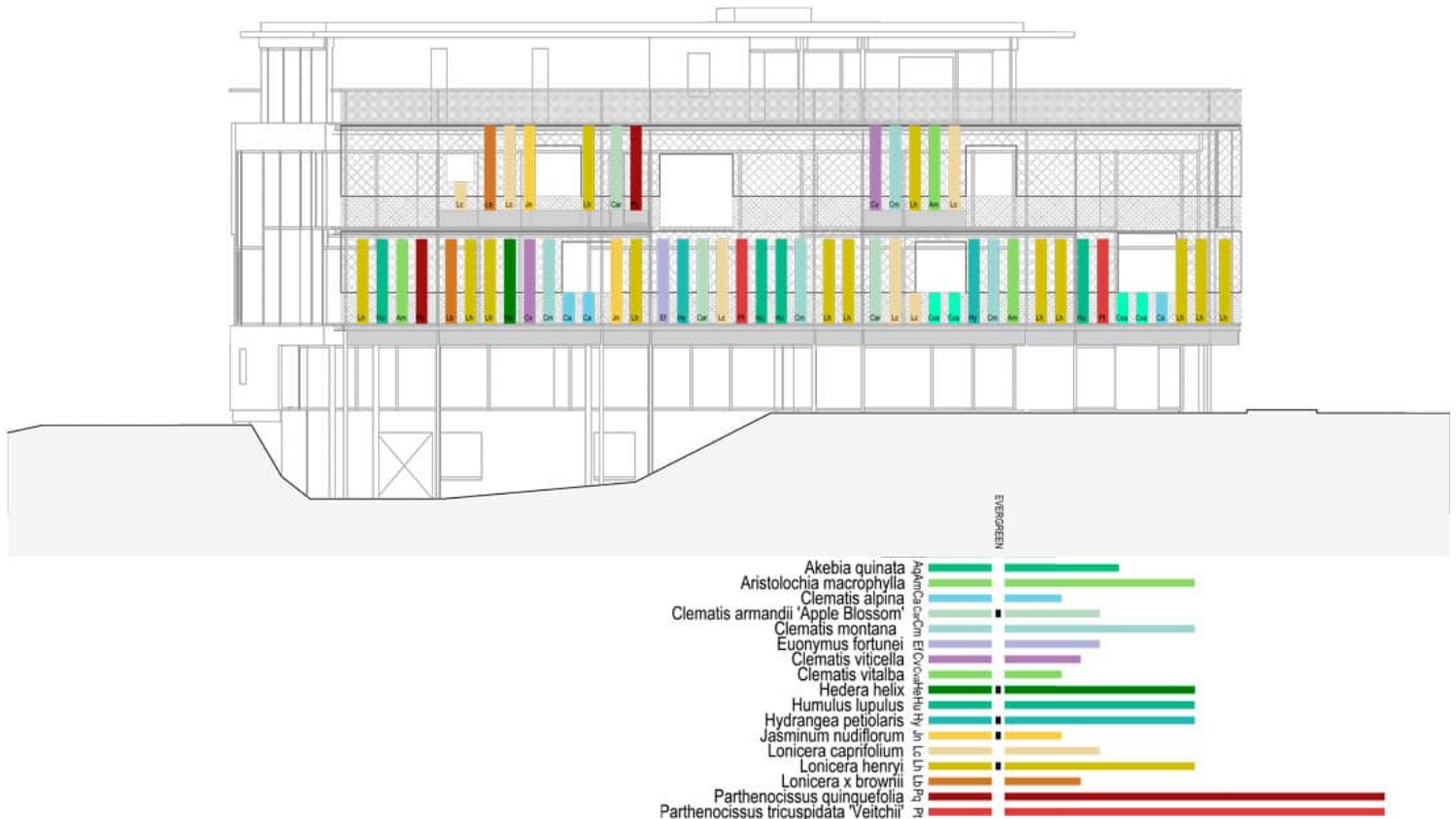
urbanNext Lexicon

ASI Reisen Headquarters: Inspired by a Symbiosis Between

Nature and Humanity

<https://urbannext.net/asi-reisen-headquarters/>

floors and acoustic panels.



Rainwater from the roof is collected in an underground cistern and feeds the automatic irrigation system for the plants on the façade and the garden. Together with the 1,215 new plants in the open space, incorporating 73 local species, the green façade also contributes to local biodiversity, ensuring that the building is a good neighbor to its human and non-human communities.

urbanNext Lexicon

ASI Reisen Headquarters: Inspired by a Symbiosis Between

Nature and Humanity

<https://urbannext.net/asi-reisen-headquarters/>



Green Interior Solutions

The open-plan office is designed for ASI Reisen's 65 employees but can be flexibly adapted to future needs if required. Gallery spaces create a large, open and flexible office space, including a variety of individual workplaces as well as communal areas. Generous glass surfaces offer

ISSN : 2575-5374

urbanNext Lexicon

ASI Reisen Headquarters: Inspired by a Symbiosis Between

Nature and Humanity

<https://urbannext.net/asi-reisen-headquarters/>

panoramic views of the surrounding mountains and forests, and a large staircase and a double-height foyer create a welcoming space for visitors. Affectionately called Base Camp, the lobby is a point of entry where the history of the company is presented on large wall panels.



The bright and welcoming atmosphere of the building interior is emphasized by the use of light timber as the main material choice. Employee comfort is prioritized through the inclusion of communal spaces such as meeting niches and rooms, a relaxation room, a cafeteria, showers and changing rooms. Shelves lined with plants provide a visually pleasing subdivision of the different working zones and offer storage space as well as informal workspaces for reading and writing. A bridge connects the new building with an existing building which includes meeting and relaxation

ISSN : 2575-5374

urbanNext Lexicon

ASI Reisen Headquarters: Inspired by a Symbiosis Between
Nature and Humanity
<https://urbannext.net/asi-reisen-headquarters/>

rooms.

ISSN : 2575-5374

urbanNext Lexicon

ASI Reisen Headquarters: Inspired by a Symbiosis Between
Nature and Humanity
<https://urbannext.net/asi-reisen-headquarters/>

ISSN : 2575-5374

urbanNext Lexicon

ASI Reisen Headquarters: Inspired by a Symbiosis Between

Nature and Humanity

<https://urbannext.net/asi-reisen-headquarters/>



An Optimized Energy Concept

To achieve optimal results, the energy concept was tested and adapted using a thermal-dynamic building simulation. A reversible air-water heat pump system (40 kW) heats and cools the building via underfloor heating or cooling. Sensors measuring room temperature, humidity, CO₂ and wind,

ISSN : 2575-5374

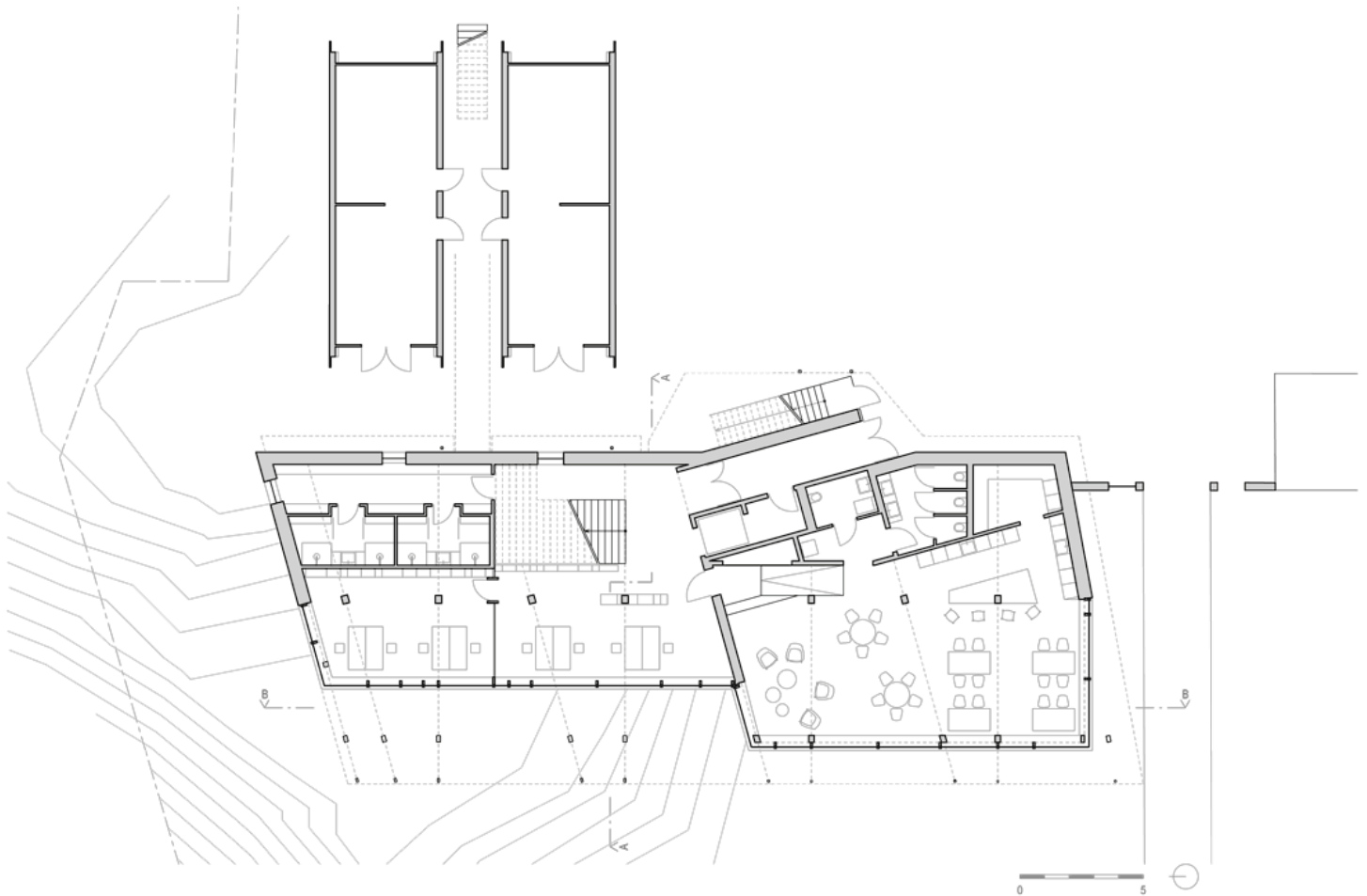
urbanNext Lexicon

ASI Reisen Headquarters: Inspired by a Symbiosis Between

Nature and Humanity

<https://urbannext.net/asi-reisen-headquarters/>

control the natural ventilation using thermal lift and wind pressure conditions to circulate fresh air through the building. The constantly monitored room climate then regulates how wide and how long the ventilation flaps are open. The roof is covered with PV panels, and the electricity generated partly covers the building's power consumption.



By offering solutions that will enable the long-term low environmental footprint of the office space, this flexible and open office space over several floors constitutes a healthy and enjoyable working environment for its users. The building is tailor-made for the needs of ASI Reisen and reflects the values of the company in an intuitive and generous way.

ISSN : 2575-5374

urbanNext Lexicon

ASI Reisen Headquarters: Inspired by a Symbiosis Between

Nature and Humanity

<https://urbannext.net/asi-reisen-headquarters/>



ISSN : 2575-5374

urbanNext Lexicon

ASI Reisen Headquarters: Inspired by a Symbiosis Between

Nature and Humanity

<https://urbannext.net/asi-reisen-headquarters/>



ISSN : 2575-5374

urbanNext Lexicon

ASI Reisen Headquarters: Inspired by a Symbiosis Between
Nature and Humanity
<https://urbannext.net/asi-reisen-headquarters/>

ISSN : 2575-5374