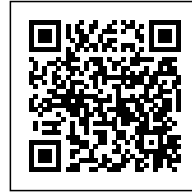




ART AND CONFERENCE CENTRE

Posted on October 19, 2016 by urbanNext



Categories: [Dominique Coulon & Associés](#), [Middle Density](#), [Project](#), [Technology and fabrication](#)

Tags: [Architecture&art](#), [Burgundy](#), [Concrete](#), [Facilities](#), [France](#), [Multifunctional building](#), [Multifunctional space](#), [Pigmented Concrete](#), [Political implications](#), [Project](#), [Public buildings](#), [Rural environment](#), [Stainless steel skin](#), [Technological Approach](#), [Venarey-Les Laumes](#)

urbanNext Lexicon

Art and Conference Centre
<https://urbannext.net/art-conference-centre/>

The Art and Conference Centre, Inter-Generation Centre, and Tourist Office stretches alongside the railway line in the small village of Venarey-Les Laumes, in Burgundy.



ISSN : 2575-5374

urbanNext Lexicon

Art and Conference Centre
<https://urbannext.net/art-conference-centre/>



ISSN : 2575-5374

urbanNext Lexicon

Art and Conference Centre
<https://urbannext.net/art-conference-centre/>



ISSN : 2575-5374

urbanNext Lexicon

Art and Conference Centre
<https://urbannext.net/art-conference-centre/>



ISSN : 2575-5374

urbanNext Lexicon

Art and Conference Centre
<https://urbannext.net/art-conference-centre/>



ISSN : 2575-5374

urbanNext Lexicon

Art and Conference Centre
<https://urbannext.net/art-conference-centre/>



ISSN : 2575-5374

urbanNext Lexicon

Art and Conference Centre
<https://urbannext.net/art-conference-centre/>



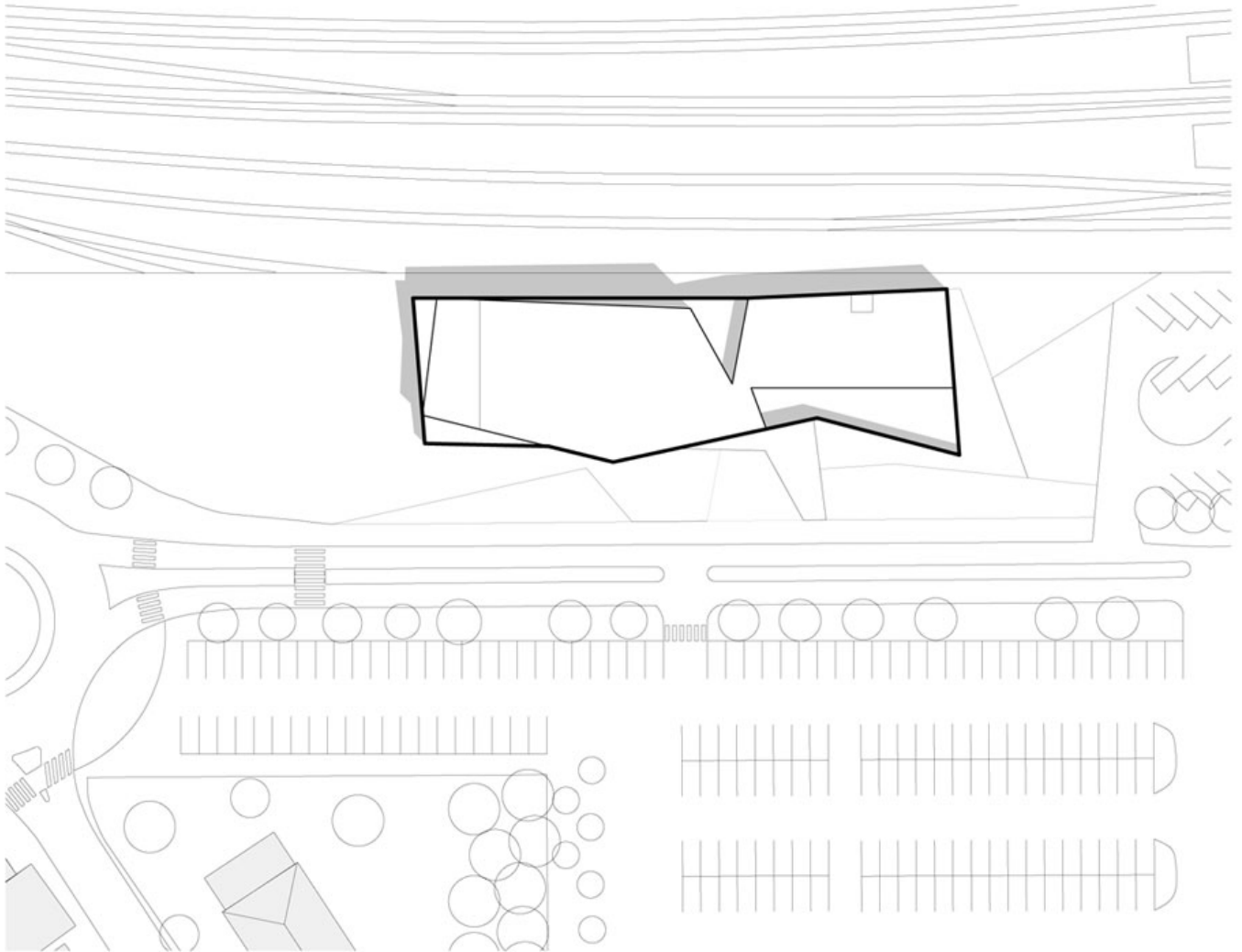
. The building, designated as a center for rural excellence, contains a number of different initiatives, including a tourist office, a conference and culture hall, a day nursery, and areas for older people. Our task was to bring all these very different initiatives together into a single dynamic unit. The upper volume seems to float above an almost transparent plinth. Cantilevers accentuate the dissociation of the various folds, each fold producing a face which captures the low-angled light produced by the orientation of the building. The lightly perforated opaque skin is divided into a number of triangles – some are matte while others are shiny, thereby breaking down the structure of the basic volumes. The building often has a different appearance at different times of day. The day nursery is located upstairs, while the other initiatives are at ground level. A bright yellow courtyard continues the line of the areas used by the nursery, the purpose being to shield them from the substantial nuisance

ISSN : 2575-5374

urbanNext Lexicon

Art and Conference Centre
<https://urbannext.net/art-conference-centre/>

caused by the freight trains and high-speed passenger trains that pass there. The transparent features of the ground floor are arranged in such a way that the relationship with the railway line is constant and perceived as a dynamic event. The volumes of the project express its strong identity in the landscape; it stands like a marker of ambitious political determination.



Site Plan

ISSN : 2575-5374

urbanNext Lexicon

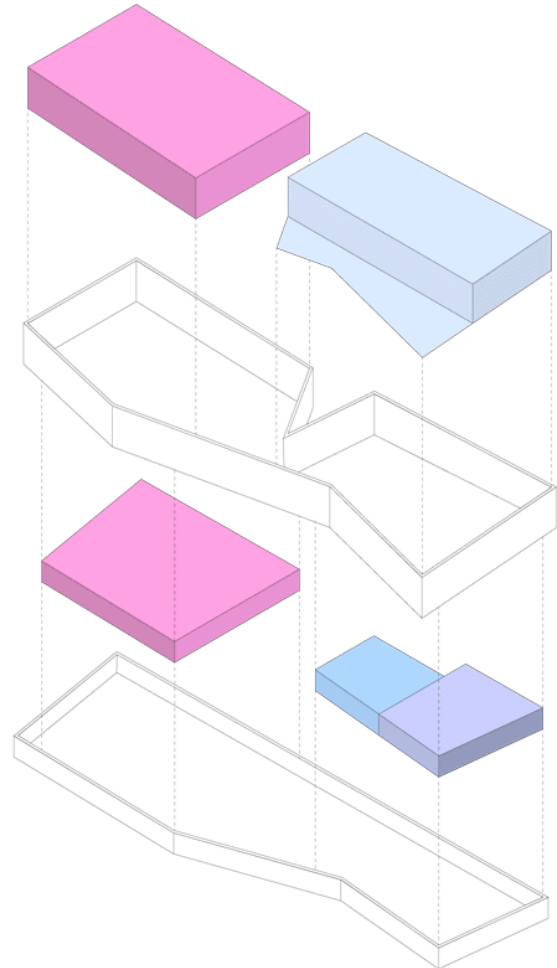
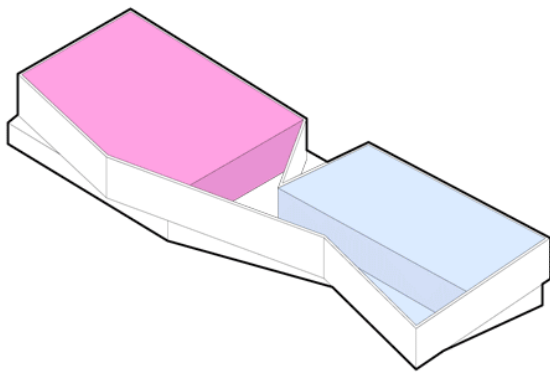
Art and Conference Centre
<https://urbannext.net/art-conference-centre/>

ISSN : 2575-5374

urbanNext Lexicon

Art and Conference Centre
<https://urbannext.net/art-conference-centre/>

ISSN : 2575-5374

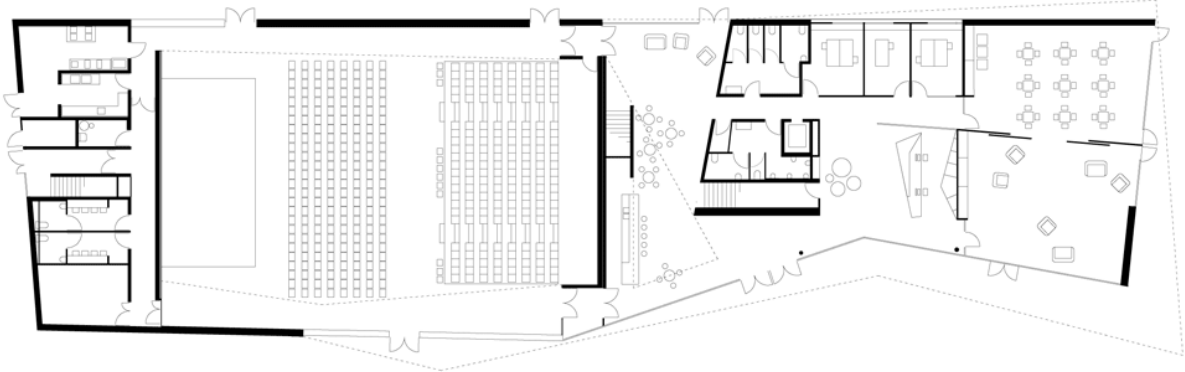


1. the program is holded by two folded walls that define the volume of the building

Diagrams

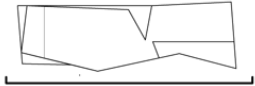
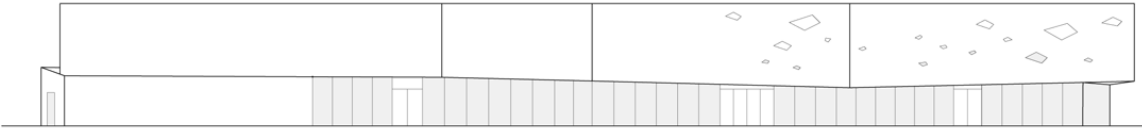
urbanNext Lexicon

Art and Conference Centre
<https://urbannext.net/art-conference-centre/>



Plans

south elevation



0 2 10 20m

urbanNext Lexicon

Art and Conference Centre
<https://urbannext.net/art-conference-centre/>

Elevations & Section

ISSN : 2575-5374

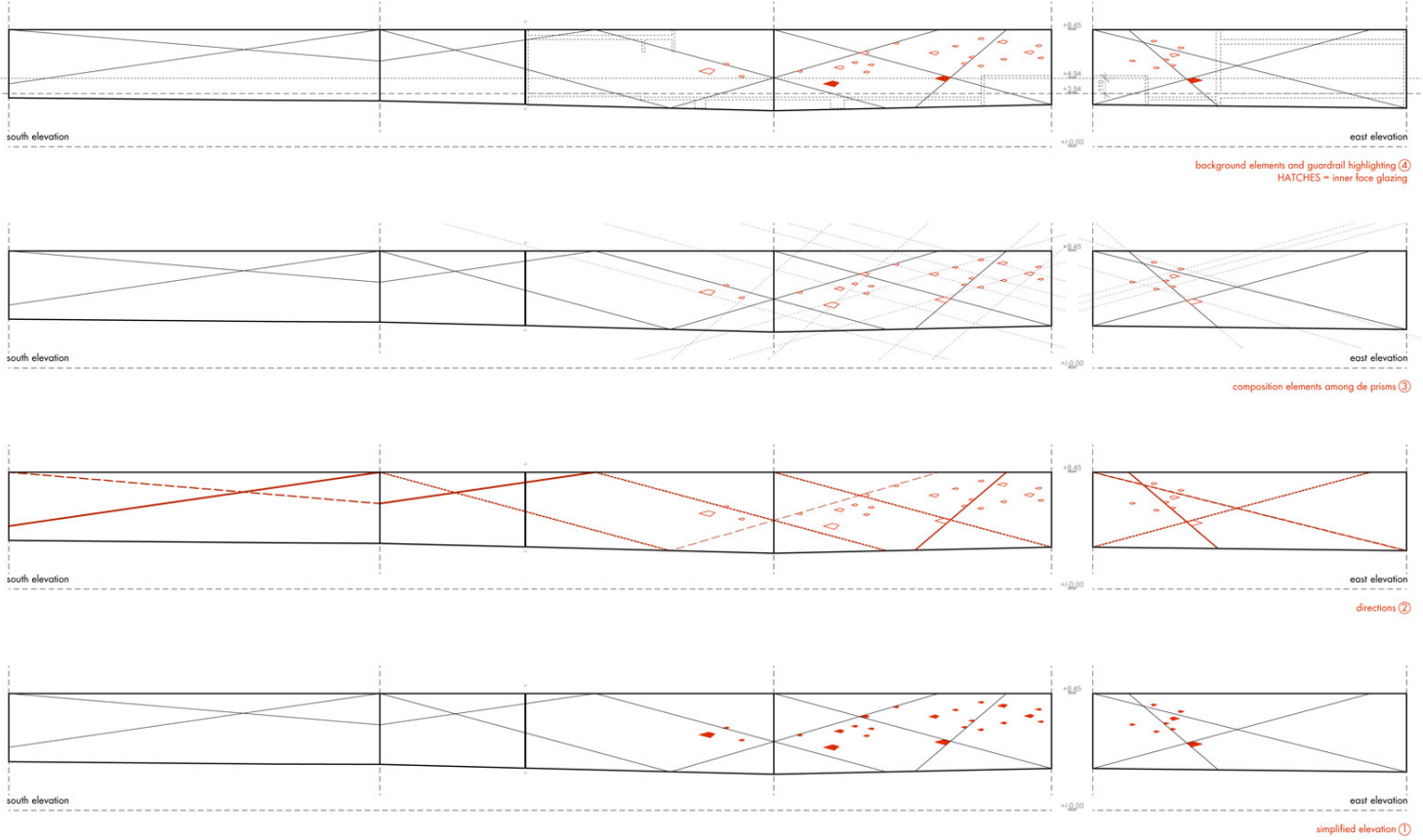
urbanNext Lexicon

Art and Conference Centre
<https://urbannext.net/art-conference-centre/>

ISSN : 2575-5374

urbanNext Lexicon

Art and Conference Centre
<https://urbannext.net/art-conference-centre/>



Façade Details

ISSN : 2575-5374

urbanNext Lexicon

Art and Conference Centre
<https://urbannext.net/art-conference-centre/>

ISSN : 2575-5374