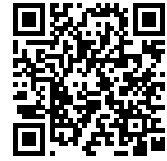




XIAMEN BICYCLE SKYWAY: BRINGING BIKING BACK TO THE PEOPLE

Posted on September 9, 2019 by martabuges



Categories: [BAB / BYCS](#), [DISSING+WEITLING](#), [High Density](#), [Project](#), [Territory and mobility](#), [Urban Paradigms](#)

Tags: [Bicycle](#), [Bridge](#), [Built environment](#), [China](#), [Citizens](#), [City challenge](#), [Cycling Infrastructure](#), [Lifestyle](#), [Pollution](#), [Project](#), [Traffic](#), [Transportation](#), [Transportation Systems](#), [Urban ecology](#), [Urban mobility](#), [Xiamen](#)

urbanNext Lexicon

Xiamen Bicycle Skyway: Bringing Biking Back to the People
<https://urbannext.net/xiamen-bicycle-skyway/>

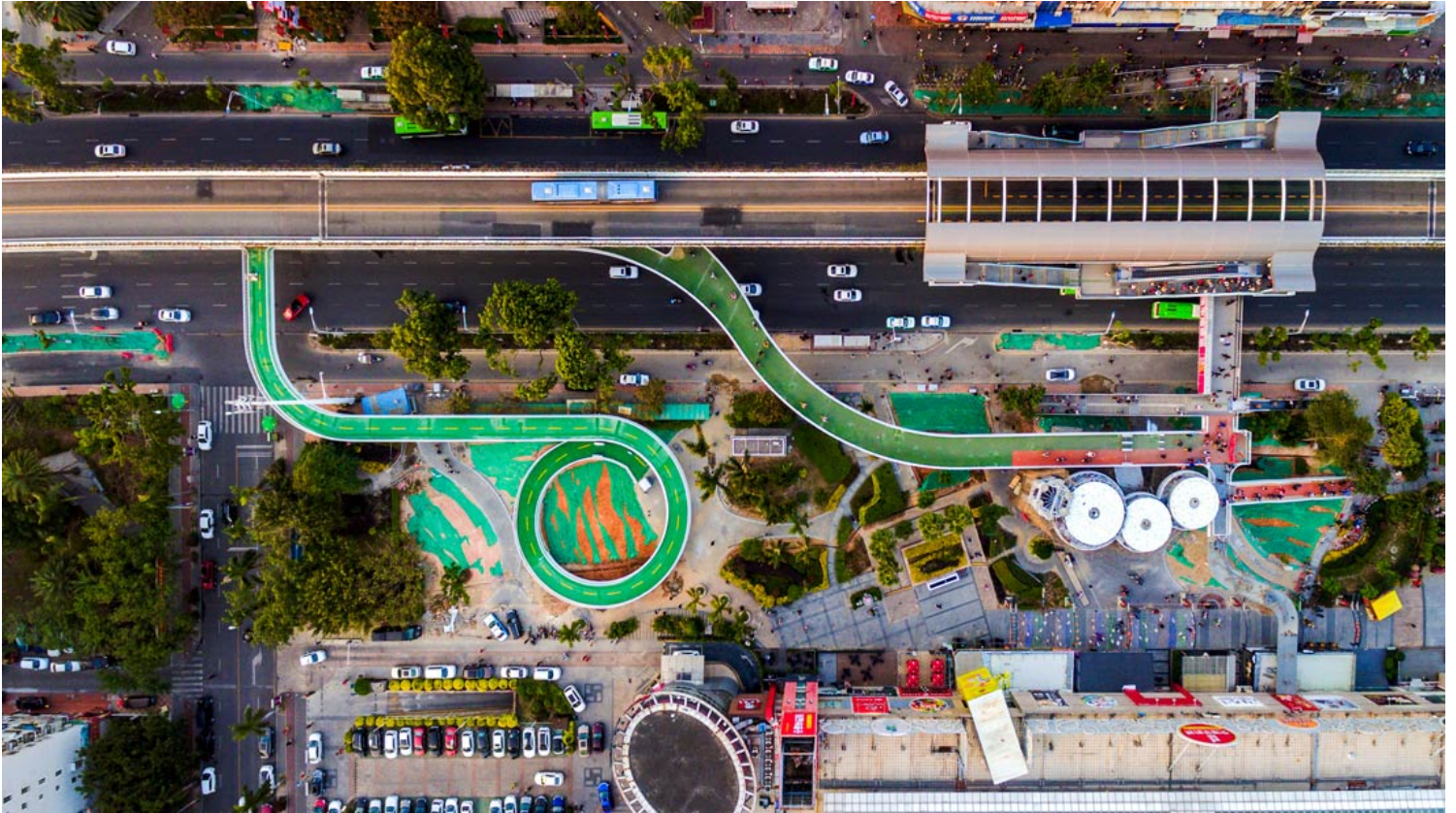
Xiamen Bicycle Skyway is the world's longest bicycle bridge and China's first suspended bicycle path on raised platforms. It is a safe and joyful experience for the citizens in Xiamen and an answer to the increased traffic congestion and pollution. Dissing+Weitling's solution helps solve a pragmatic transport-related problem, while at the same time making the city greener and more liveable and accommodating the needs of citizens at large.



ISSN : 2575-5374

urbanNext Lexicon

Xiamen Bicycle Skyway: Bringing Biking Back to the People
<https://urbannext.net/xiamen-bicycle-skyway/>



Xiamen Bicycle Skyway enhances mobility, connectivity and accessibility for the people in Xiamen as an elevated bicycle pathway along the busy road that incorporates pedestrian bridges, ramps, roundabouts, bicycle parking, bicycle service pavilions and points of interest.

The project has received great international media publicity and made it to the top in the Danish Design Awards 2019. As the winner of the new category, Liveable Cities, the solution is recognized as "having a positive effect on the city environment and ecology".

ISSN : 2575-5374

urbanNext Lexicon

Xiamen Bicycle Skyway: Bringing Biking Back to the People
<https://urbannext.net/xiamen-bicycle-skyway/>



The [Danish Design Award Jury 2019](#) said:

"Bringing new life to an otherwise dead part of the city and integrating different forms of traffic, the Skyway solves a very complex challenge. Skyway involves Danish architects reviving a part of Chinese daily life – cycling culture – in a new context. The design quality is impressive for a project on this scale, and the Skyway is overall a great example of how Danish design DNA can be adapted into a different local fabric."

ISSN : 2575-5374

urbanNext Lexicon

Xiamen Bicycle Skyway: Bringing Biking Back to the People
<https://urbannext.net/xiamen-bicycle-skyway/>



The bicycle bridge is 7.6 kilometers long and 4.8 meters wide. It runs along and underneath the city's existing overhead BRT skyway in the central part of the city and covers the city's five major residential and three business centers. There are 11 entrances onto the path, which will connect with 11 bus stations and two subway stations.

ISSN : 2575-5374

urbanNext Lexicon

Xiamen Bicycle Skyway: Bringing Biking Back to the People
<https://urbannext.net/xiamen-bicycle-skyway/>

ISSN : 2575-5374