



## WORKSHOP HOUSE TECNOMEC

*Posted on February 7, 2017 by Urban UrbanNext*



---

**Categories:** [Energy and sustainability](#), [High Density](#), [Middle Density](#), [PAX. ARQ](#), [Project](#), [Southern Coexistences](#), [Technology and fabrication](#)

**Tags:** [Brazil](#), [Concrete](#), [Energetic Approach](#), [Multifunctional building](#), [Private housing](#), [Project](#), [São Paulo](#), [Searches on scales](#), [Singular Housing](#), [Southern Coexistences](#), [Technological Approach](#)

# urbanNext Lexicon

Workshop House Tecnomec  
<https://urbannext.net/workshop-house-tecnomec/>

As a result of a particular programmatic condition, the Workshop House project was conceived to host a residence, a high-performance mechanical workshop and classrooms in a 260m<sup>2</sup> terrain located in the Pinheiros neighborhood of São Paulo.



ISSN : 2575-5374

# urbanNext Lexicon

Workshop House Tecnomec  
<https://urbannext.net/workshop-house-tecnomec/>



The programmatic activities were distributed in a specific way to make the most of the space from a functional and a legal point of view. The result is a separation of the program across three levels: the ground floor, which hosts the mechanical workshop activities, revisions, repairs, part washing and a dynamometer room for vehicle testing; the first floor, where the classrooms, study rooms and bathrooms are located; and the second floor, reserved for the residence.

ISSN : 2575-5374

# urbanNext Lexicon

Workshop House Tecnomec  
<https://urbannext.net/workshop-house-tecnomec/>



ISSN : 2575-5374



# urbanNext Lexicon

Workshop House Tecnomec  
<https://urbannext.net/workshop-house-tecnomec/>



ISSN : 2575-5374

# urbanNext Lexicon

Workshop House Tecnomec  
<https://urbannext.net/workshop-house-tecnomec/>

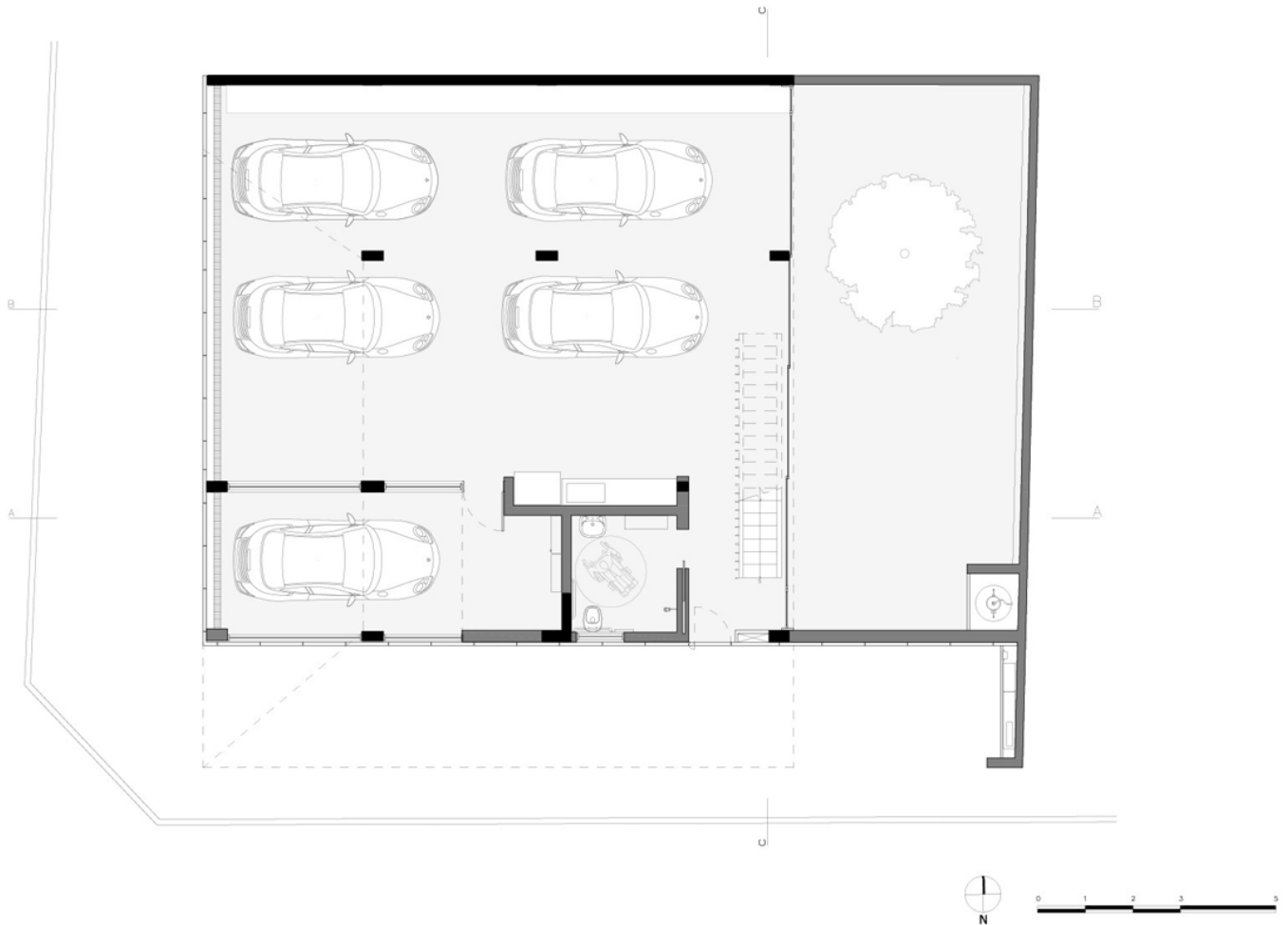


All the activities are administered by a single inhabitant, who divides his daily schedule among the different spaces, each of which has particular characteristics. When all the spaces are joined together, the relationship serves to generate a specific morphology that is a consequence of the conditions that lie at the origin of the project.

ISSN : 2575-5374

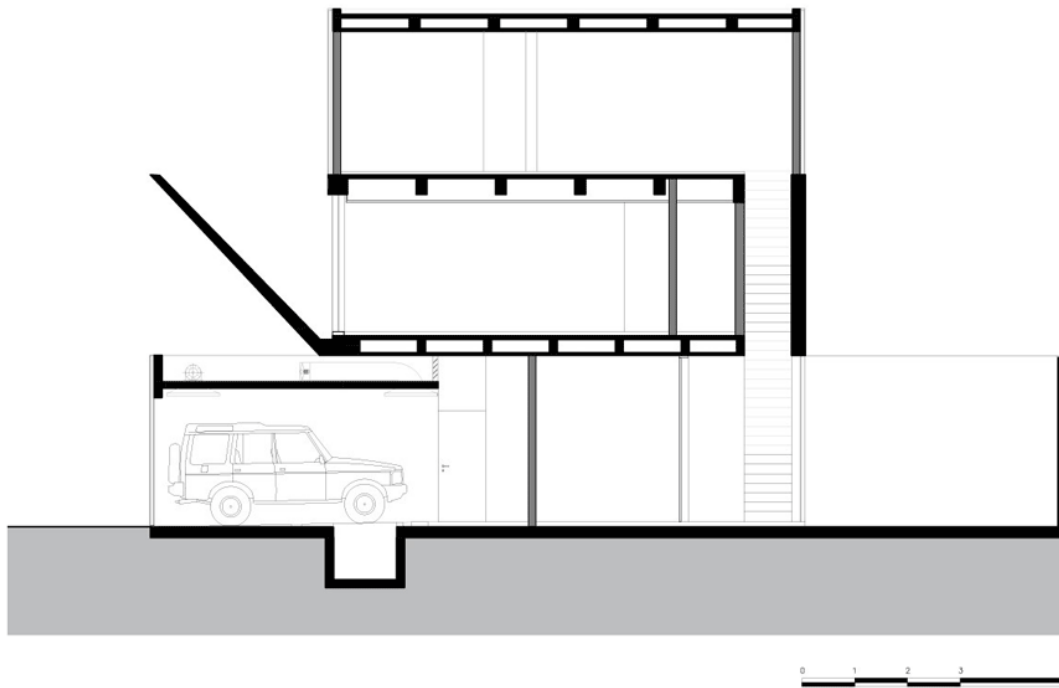
# urbanNext Lexicon

Workshop House Tecnomec  
<https://urbannext.net/workshop-house-tecnomec/>



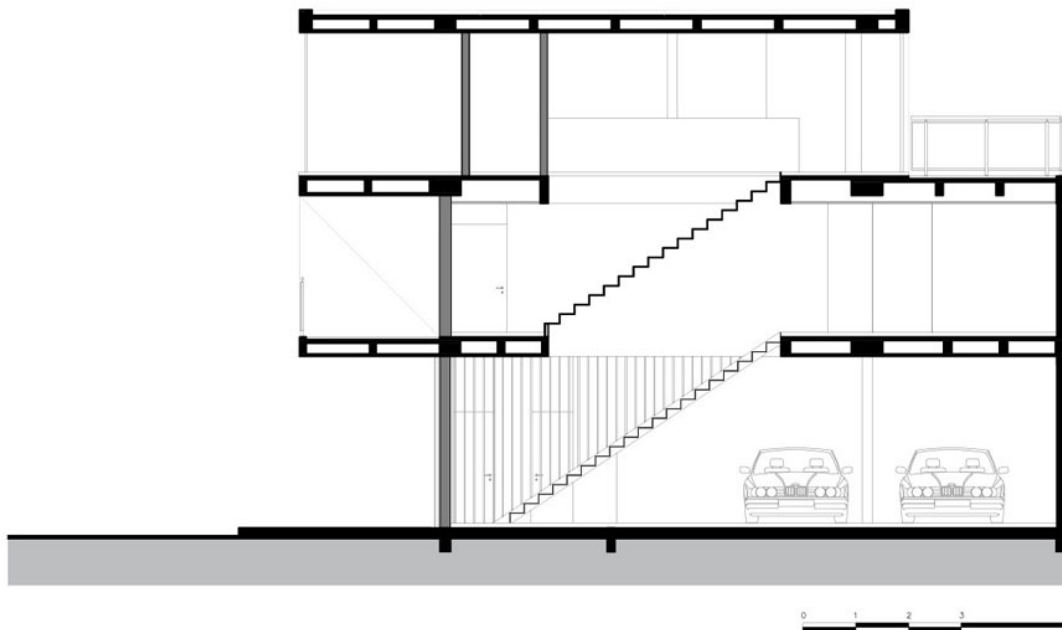
**Plans**

ISSN : 2575-5374



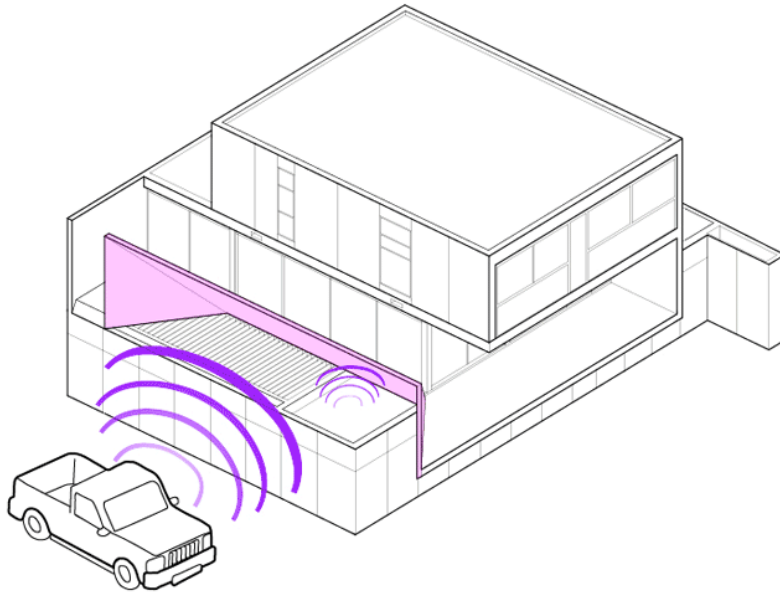
**South Elevation & Section**





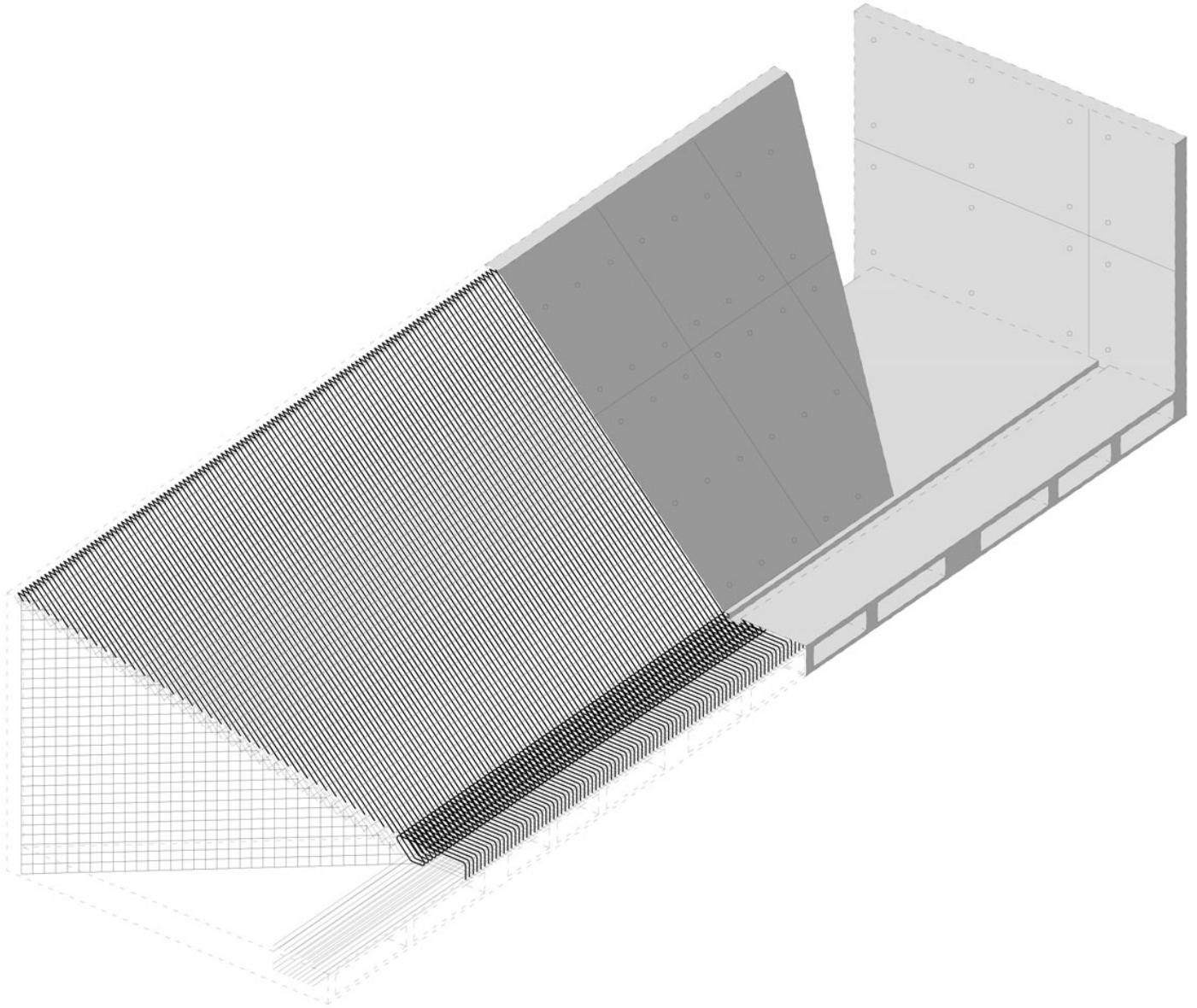
## Section

The concrete inclined slab gathers a major role among the whole composition as an element capable of offering diverse solutions. It embodies the visual limit between the public and private realms, while it shelters the upper domains from noise pollution and the mechanical equipment on the ground-floor. Simultaneously, it enhances natural ventilation and illumination for the workshop and classrooms, while facilitating rain water capturing for reuse.



Acoustic Isolation

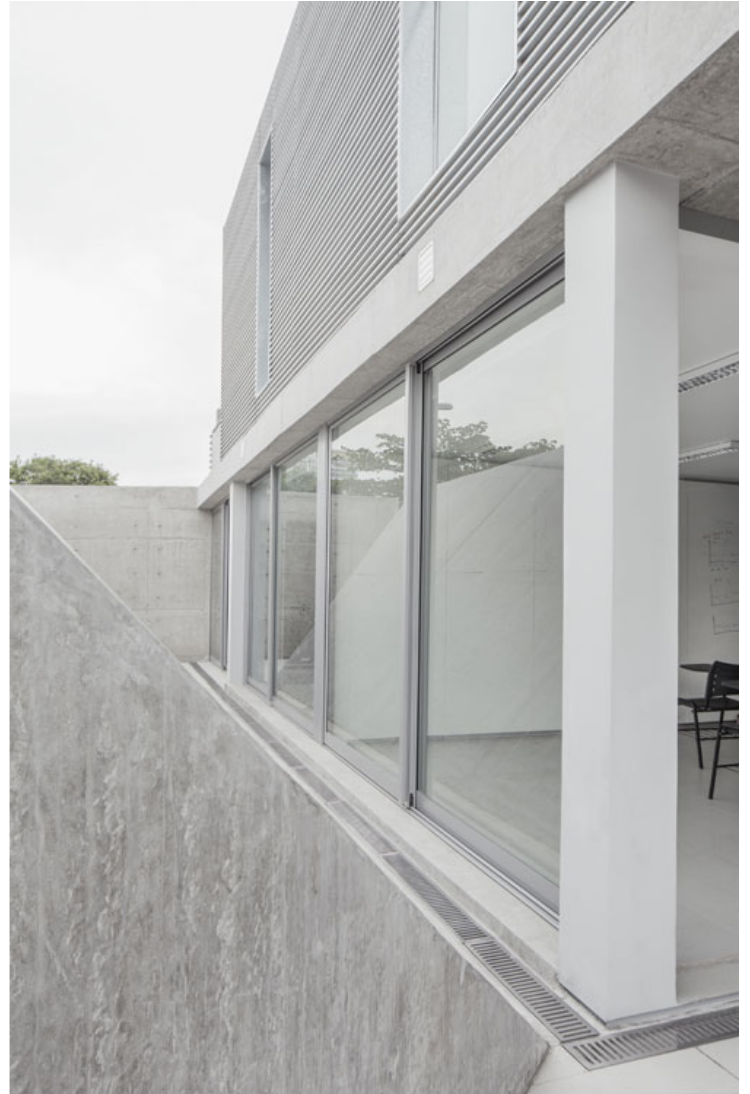
## Diagrams



**Axonometric Detail**

# urbanNext Lexicon

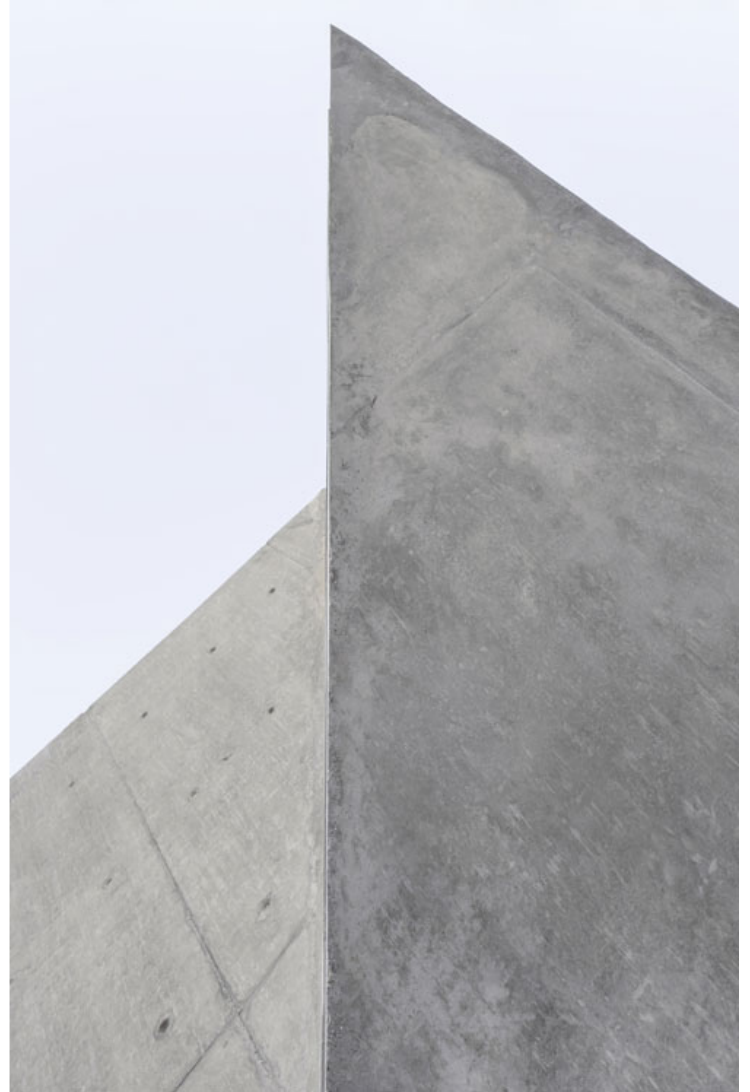
Workshop House Tecnomec  
<https://urbannext.net/workshop-house-tecnomec/>



ISSN : 2575-5374

# urbanNext Lexicon

Workshop House Tecnomec  
<https://urbannext.net/workshop-house-tecnomec/>



The relationship between the building and the city is compelling, as the composition draws back voluntarily from the limits of the plot and opens up the urban corner in a gentle way, providing a place for gathering and urban encounters in the surrounding area.

ISSN : 2575-5374



# urbanNext Lexicon

Workshop House Tecnomec  
<https://urbannext.net/workshop-house-tecnomec/>



ISSN : 2575-5374

# urbanNext Lexicon

Workshop House Tecnomec  
<https://urbannext.net/workshop-house-tecnomec/>



ISSN : 2575-5374



# urbanNext Lexicon

Workshop House Tecnomec  
<https://urbannext.net/workshop-house-tecnomec/>



ISSN : 2575-5374

# urbanNext Lexicon

Workshop House Tecnomec  
<https://urbannext.net/workshop-house-tecnomec/>

ISSN : 2575-5374