



## VAN HOOREBEKE TIMBER GHENT: LINK BETWEEN PROGRAMMES

*Posted on April 16, 2019 by martabuges*



**Categories:** [Designing Matter](#), [Low Density](#), [Project](#), [Technology and fabrication](#), [TRANS architectuur stedenbouw](#)

**Tags:** [Belgium](#), [Factory](#), [Ghent](#), [Industrial](#), [Industrial context](#), [Project](#), [Timber](#), [Timber Structure](#), [Wood](#)

# urbanNext Lexicon

Van Hoorebeke Timber Ghent: Link between Programmes  
<https://urbannext.net/van-hoorebeke-timber-ghent/>

Connected to the seven seas through the Ghent-Terneuzen Canal, the site on the quay links wood-producing countries with the continental market. Here, raw timber is unloaded, stored and processed before being transported over land.



ISSN : 2575-5374

# urbanNext Lexicon

Van Hoorbeke Timber Ghent: Link between Programmes  
<https://urbannext.net/van-hoorbeke-timber-ghent/>



The scale of the port area dominates the docks, populated by ocean-going giants, squeezed between wind turbines and factories that only seem to grow bigger with distance.

The reception building, housing the central administration, tops off the production site. Amidst seemingly never-ending storage buildings and the planning mill, it welcomes lorry drivers coming to pick up raw or processed wood, and clients visiting the site.

ISSN : 2575-5374

# urbanNext Lexicon

Van Hoorebeke Timber Ghent: Link between Programmes  
<https://urbannext.net/van-hoorebeke-timber-ghent/>



ISSN : 2575-5374



# urbanNext Lexicon

Van Hoorbeke Timber Ghent: Link between Programmes  
<https://urbannext.net/van-hoorbeke-timber-ghent/>



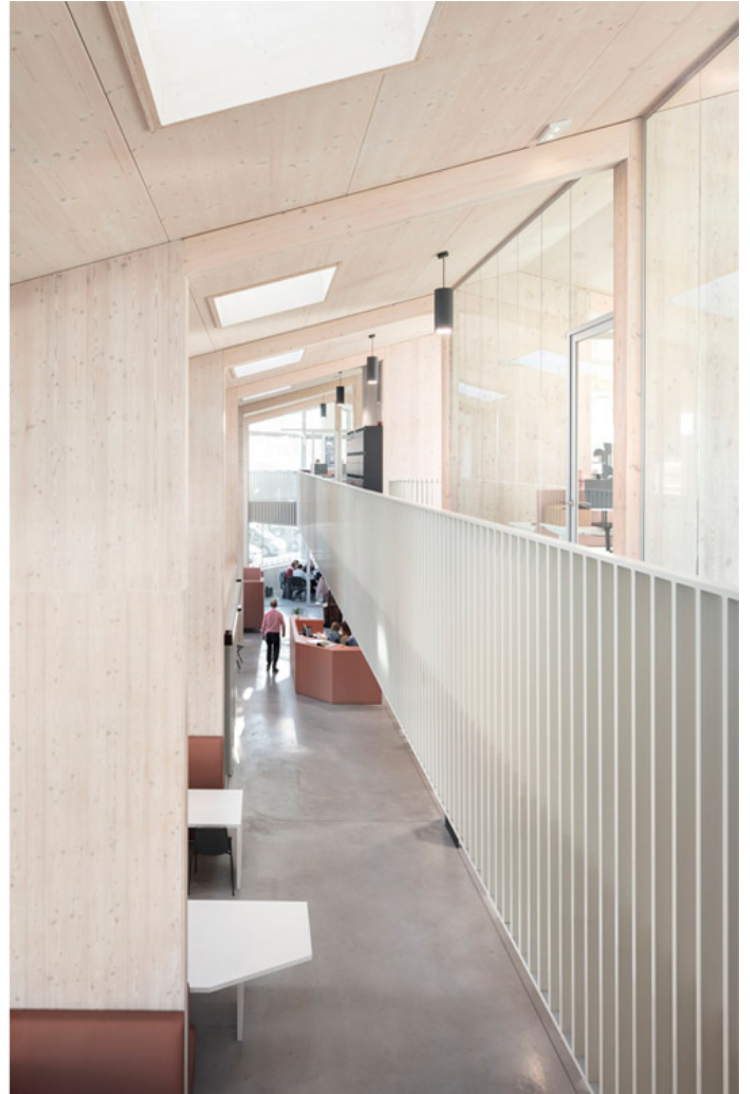
Here, lorries, bulldozers and cars are left behind. Drivers must continue on foot. The realisation hits: they are moving between objects at a scale incomprehensibly larger than mankind's.

The programme completing the production site is tiny compared to the lumbering giants all around. Yet, it is essential for us humans to find our place. It provides shelter from the premises, a safe haven to return to at any time. Much like the site itself is a link on a global scale, so too is the building a link between the programmes on the site.

ISSN : 2575-5374

# urbanNext Lexicon

Van Hoorebeke Timber Ghent: Link between Programmes  
<https://urbannext.net/van-hoorebeke-timber-ghent/>



The ground plan starts from a simple rectangle, which is then refined into a prismatic shape dictated by circulation routes at the production site.

Beneath a gently sloping roof, the ground floor houses the reception, the cafeteria and meeting rooms of various sizes. Higher up, permanent working spaces offer a panoramic view over the industrial landscape.

ISSN : 2575-5374

# urbanNext Lexicon

Van Hoorbeke Timber Ghent: Link between Programmes  
<https://urbannext.net/van-hoorbeke-timber-ghent/>



ISSN : 2575-5374



# urbanNext Lexicon

Van Hoorebeke Timber Ghent: Link between Programmes  
<https://urbannext.net/van-hoorebeke-timber-ghent/>



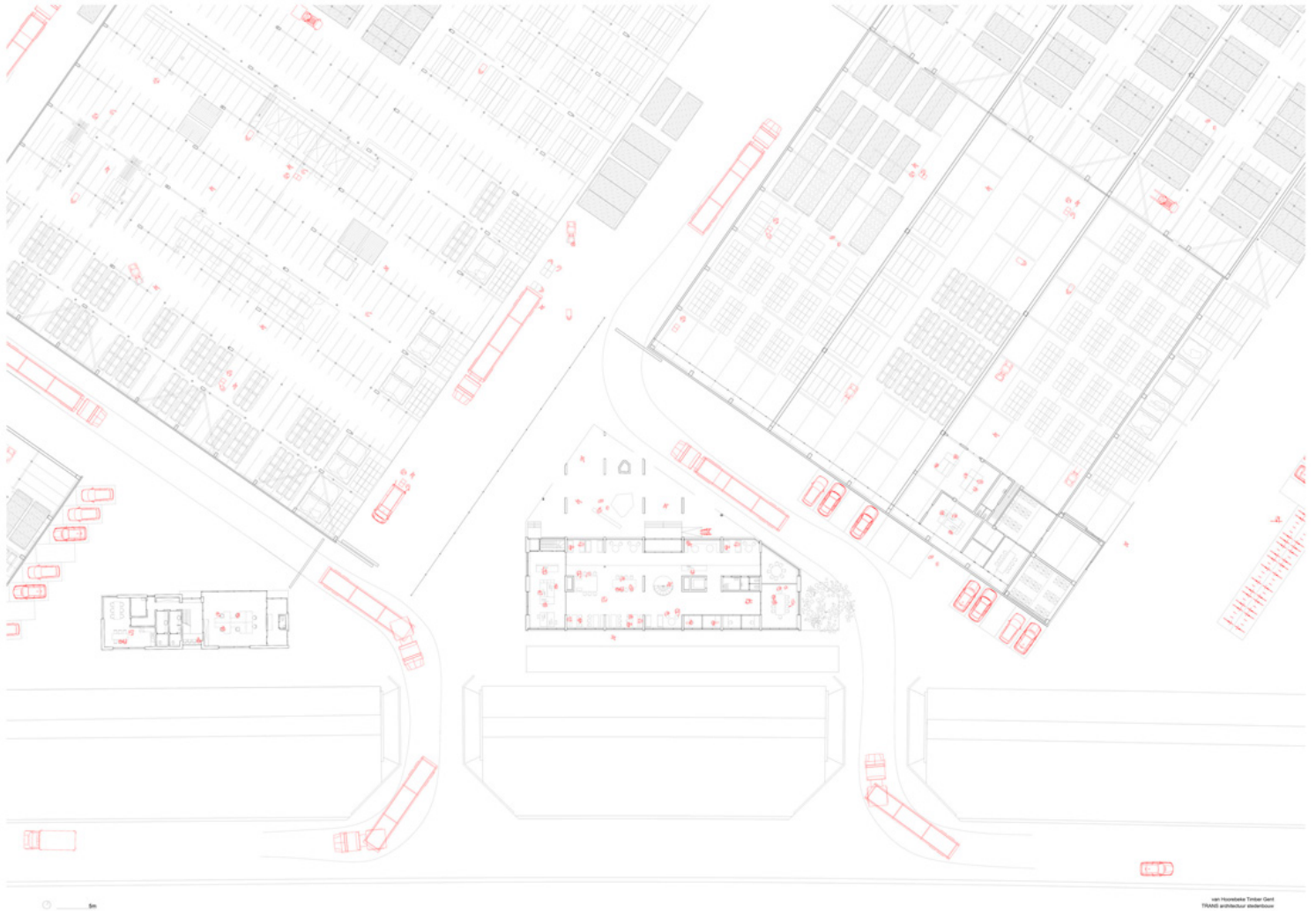
Roof, plates and floors are created from cross-laminated timber. The chief material matches the stored timber shaping the company's precincts.

ISSN : 2575-5374



# urbanNext Lexicon

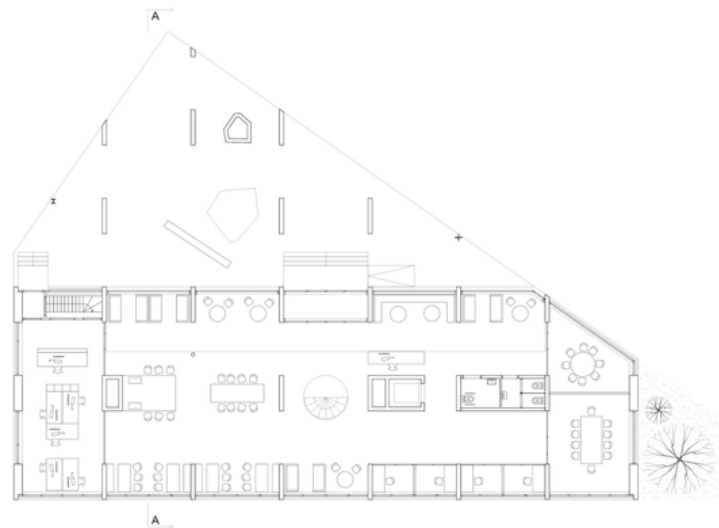
Van Hoorebeke Timber Ghent: Link between Programmes  
<https://urbannext.net/van-hoorebeke-timber-ghent/>



ISSN : 2575-5374

# urbanNext Lexicon

Van Hoorbeke Timber Ghent: Link between Programmes  
<https://urbannext.net/van-hoorbeke-timber-ghent/>



5m

van Hoorbeke Timber Ghent  
TRANS architectuur stedenbouw

ISSN : 2575-5374

# urbanNext Lexicon

Van Hoorebeke Timber Ghent: Link between Programmes  
<https://urbannext.net/van-hoorebeke-timber-ghent/>

ISSN : 2575-5374