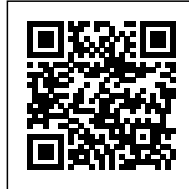




SIMONE VEIL

Posted on November 5, 2016 by urbanNext



Categories: [Dominique Coulon & Associés](#), [Middle Density](#), [Project](#), [Technology and fabrication](#)

Tags: [City dialogue](#), [Colombes](#), [Concrete](#), [Education](#), [Educational Building](#), [Facilities](#), [France](#), [Glass panels](#), [Paris](#), [Pigmented Concrete](#), [Plywood ceiling](#), [Project](#), [Suburbs](#), [Technological Approach](#), [Wooden panels](#)



The 'Simone Veil' group of schools acts as a structural element in the urban composition of the new eco-neighborhood. It is tightly embedded in the dense urban fabric, opposite a park and straddling the maintenance workshops for the new tram line.





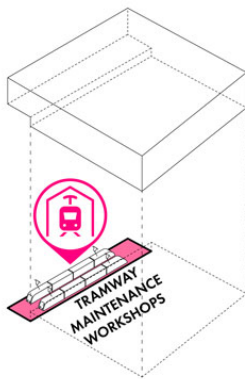




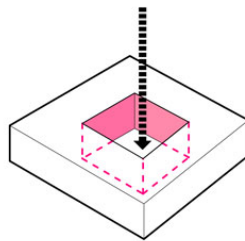
The building is divided across three levels. The plot of land is small, and the roof areas are used to house the elementary school's classrooms and educational gardens. The group also includes a sports hall, a canteen, a library, and out-of-school childcare facilities. The building is very broad; the



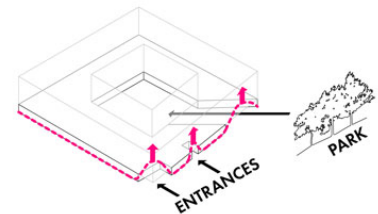
hollows scooped out of the façades serve as facets, attracting the light and reflecting it back. Many of the interior traffic routes are lateralized, making them varied and bright. A number of patios irrigate the heart of the building, bringing natural light into its thickness. Internal transparencies add extra richness to the circulation areas.



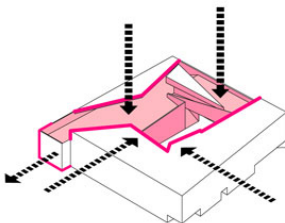
1. The building covers the tramway maintenance workshops.



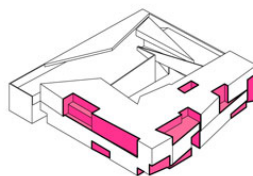
2. Compact volume / central void



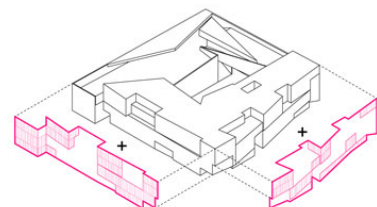
3. Porosity towards the town



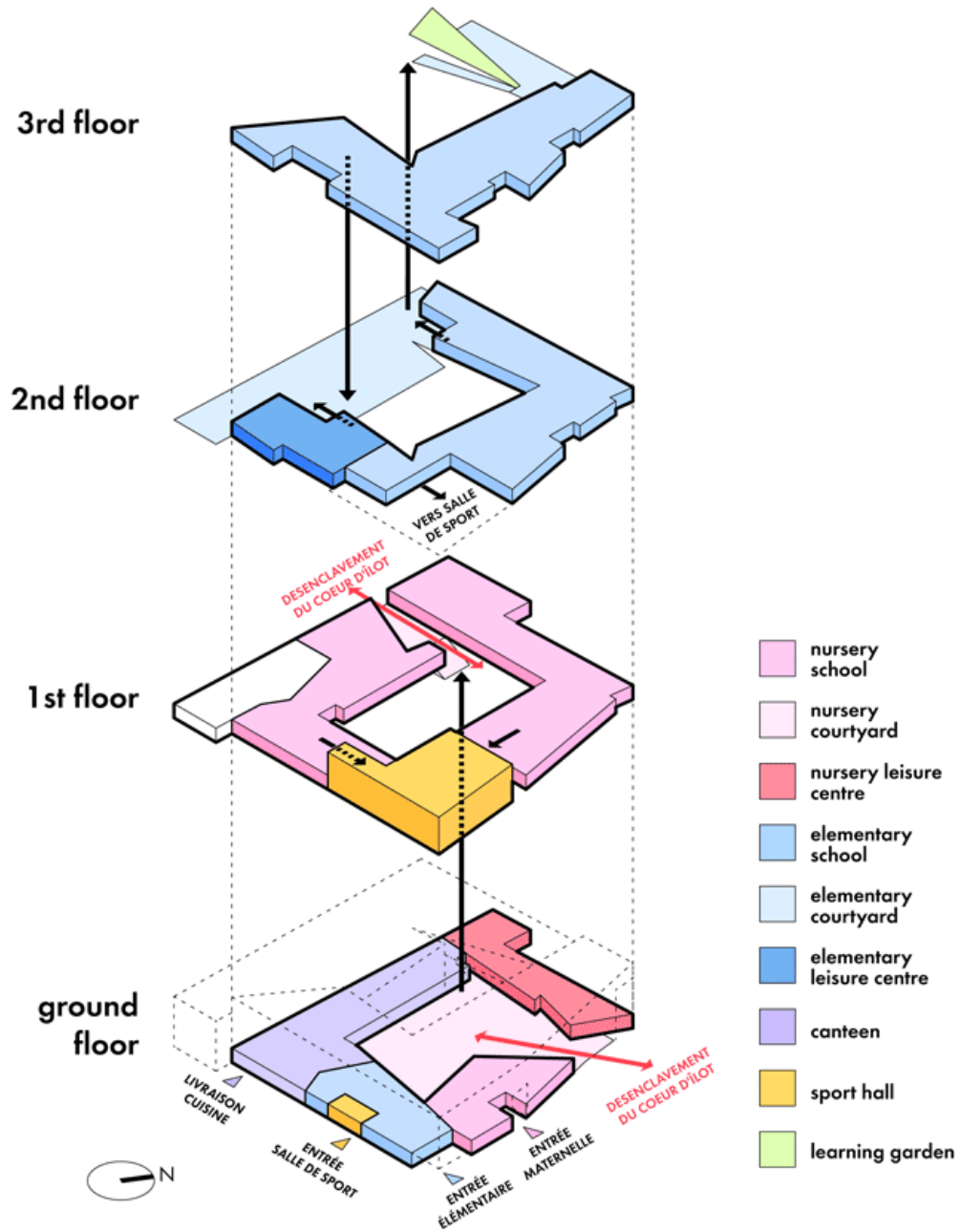
4. Geometrical deformations to create schoolyards



5. Coloured cavities as multiple facets capturing sunlight



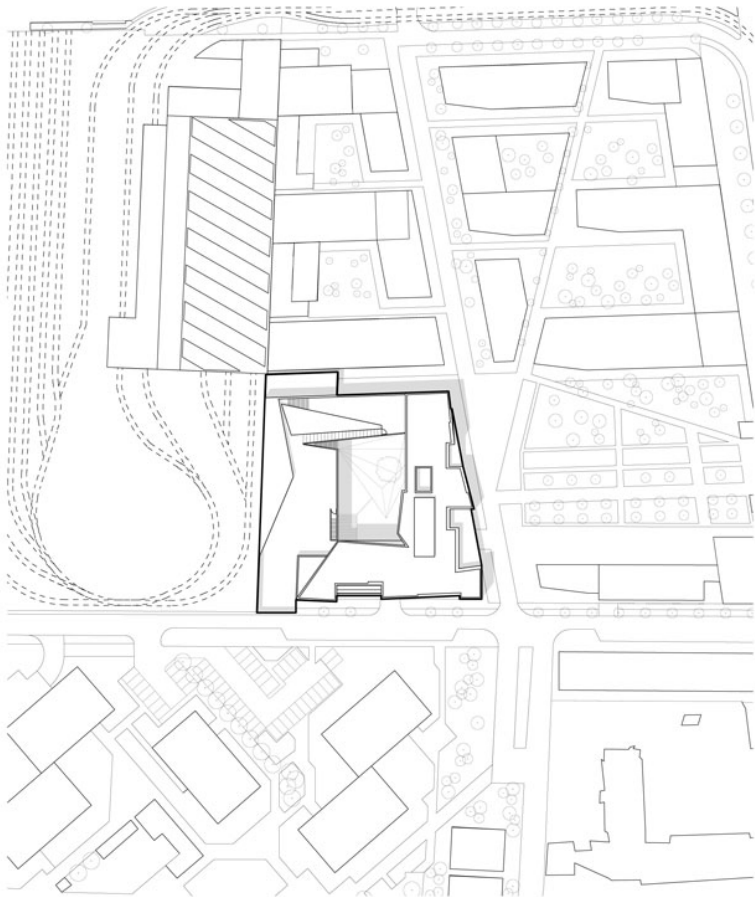
6. The rough wooden slats offer a rustic texture



program

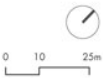


Diagrams

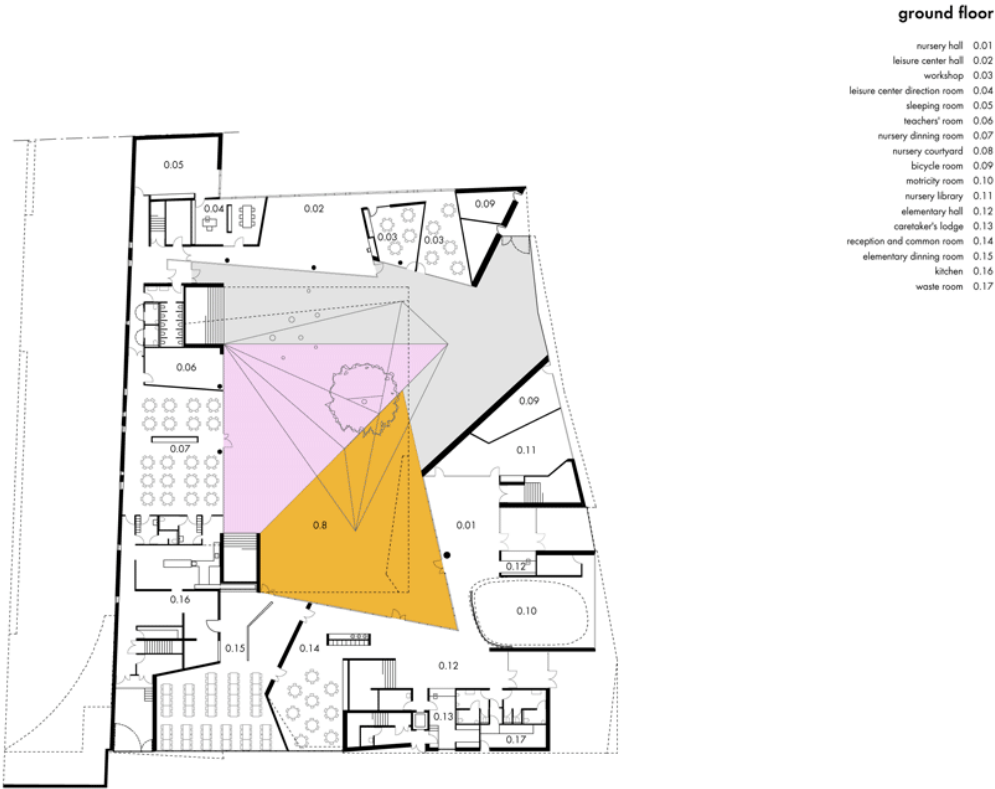


site plan

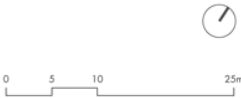
simone veil group of schools à colombes



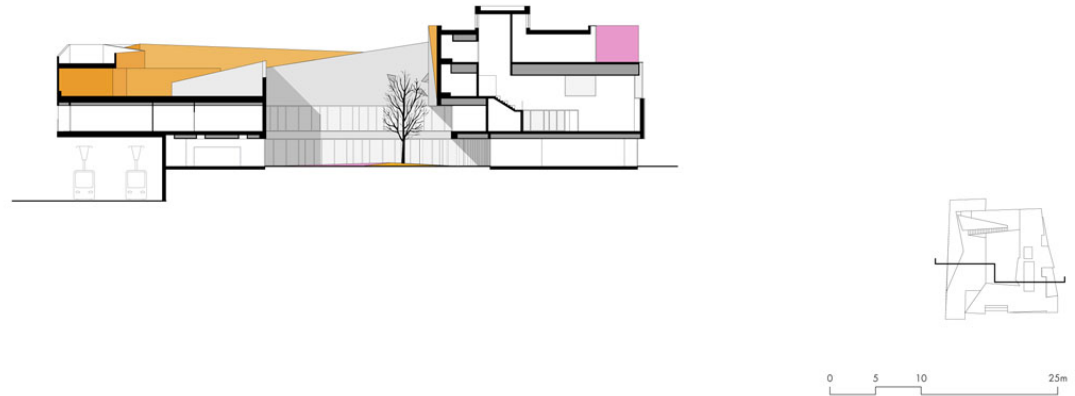
Site Plan



simone veil group of schools in colombes



Plans



simone veil group of schools in colombes

Section

On the town side, the building offers a rustic texture. Strips of untreated wood (with the bark left on) emphasize the corresponding roughness. The ground floor has the advantage of transparency through the covered courtyard, offering a glimpse of the multi-colored playground, which is intended to be a very autonomous and artificial universe. The bright colors transform the space, expanding it to create a place for educational stimulation







This project avoids all form of repetition. The light, the materials used, and the traffic routes create micro-events. These fragments come together in a joyful chaos.







