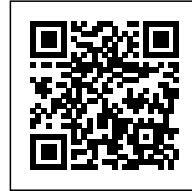




SHAH HOUSES

Posted on January 11, 2017 by urbanNext



Categories: [Anupama Kundoo](#), [expanding design practices](#), [Low Density](#), [Project](#), [Technology and fabrication](#)

Tags: [Architecture&climate](#), [Auroville](#), [Bricks](#), [Building construction](#), [Concrete](#), [Eco Building](#), [Ecological activation](#), [Ecological agencies](#), [Ecological researches](#), [Ecology](#), [Energetic Approach](#), [India](#), [Local resources](#), [Local solutions](#), [Low budget](#), [Natural dialogue](#), [Private housing](#), [Project](#), [Prototype building](#), [Prototype solutions](#), [Rain Water Harvesting](#), [Second nature](#), [Singular Housing](#), [Stone](#), [Sustainable behaviors](#), [Sustainable construction](#), [Technological Approach](#), [Terracotta filler slabs](#), [Thermal comfort](#), [Thermal inertia](#), [Thermodynamic practices](#), [Thermodynamics](#), [Tradition](#), [Urban Paradigms](#)

urbanNext Lexicon

Shah Houses

<https://urbannext.net/shah-houses/>

Sangamam is located on the outskirts of Auroville, Tamil Nadu, in an area affected by environmental and social problems, including water scarcity, saline water intrusion, soil erosion and declining soil fertility, unemployment, and inadequate housing, educational and medical facilities.

ISSN : 2575-5374

urbanNext Lexicon

Shah Houses
<https://urbannext.net/shah-houses/>



ISSN : 2575-5374

urbanNext Lexicon

Shah Houses

<https://urbannext.net/shah-houses/>



ISSN : 2575-5374

urbanNext Lexicon

Shah Houses

<https://urbannext.net/shah-houses/>



ISSN : 2575-5374

urbanNext Lexicon

Shah Houses

<https://urbannext.net/shah-houses/>



ISSN : 2575-5374

urbanNext Lexicon

Shah Houses

<https://urbannext.net/shah-houses/>



ISSN : 2575-5374

urbanNext Lexicon

Shah Houses

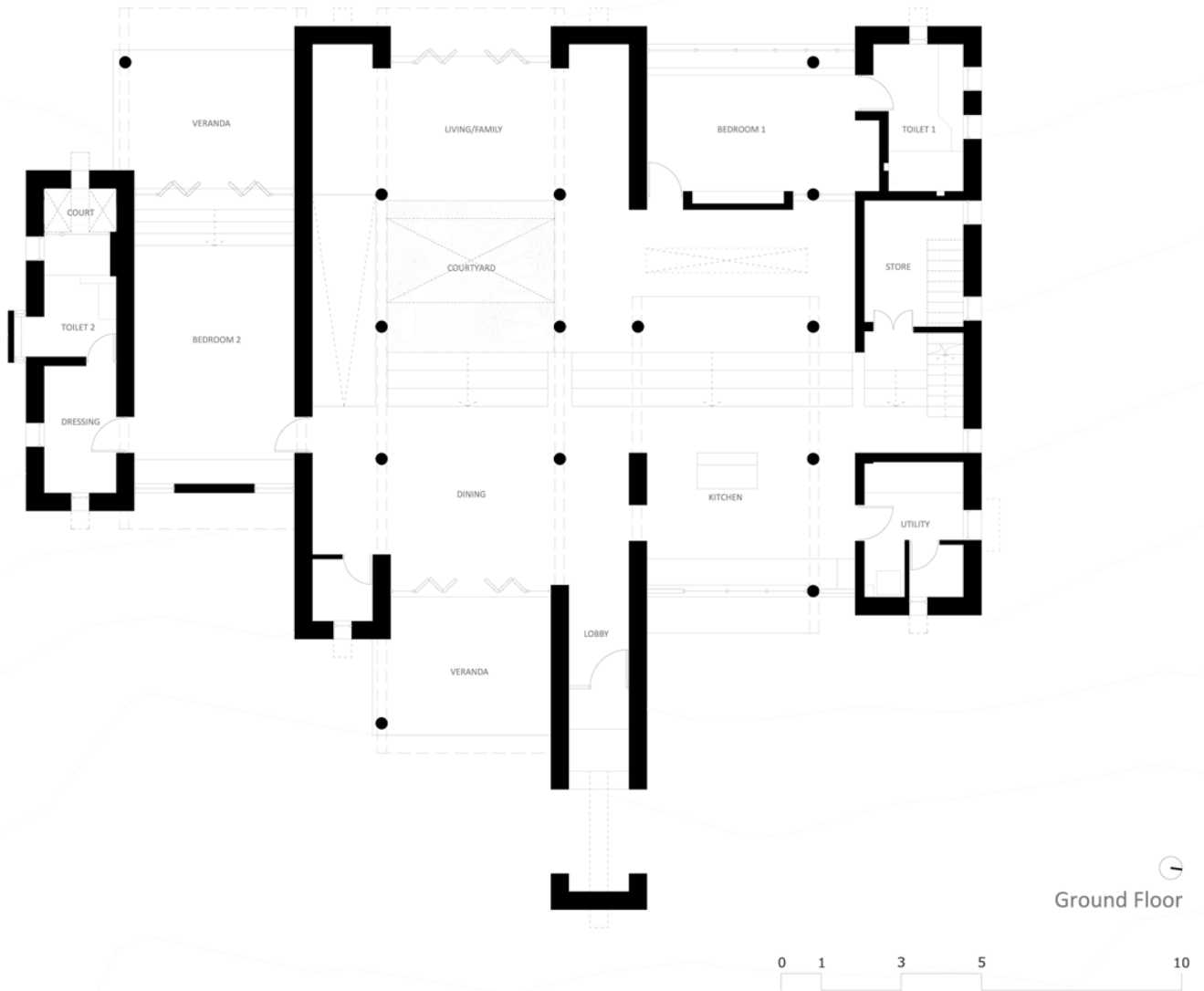
<https://urbannext.net/shah-houses/>



ISSN : 2575-5374

urbanNext Lexicon

Shah Houses
<https://urbannext.net/shah-houses/>



Ketan Shah Plans

ISSN : 2575-5374

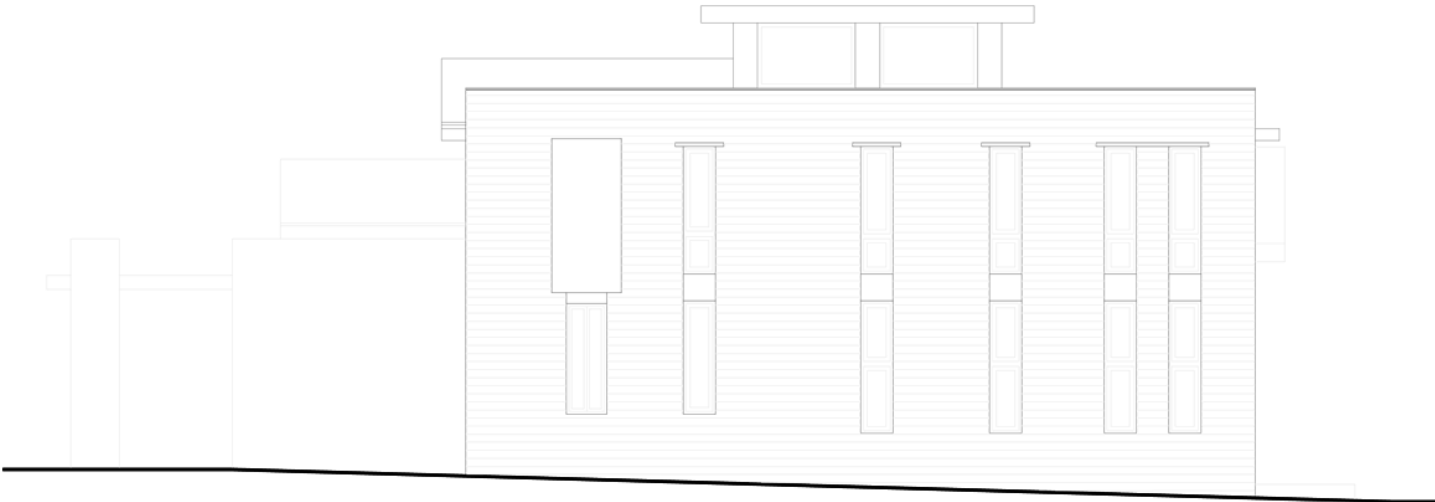
urbanNext Lexicon

Shah Houses
<https://urbannext.net/shah-houses/>

ISSN : 2575-5374

urbanNext Lexicon

Shah Houses
<https://urbannext.net/shah-houses/>



elevation a-a'

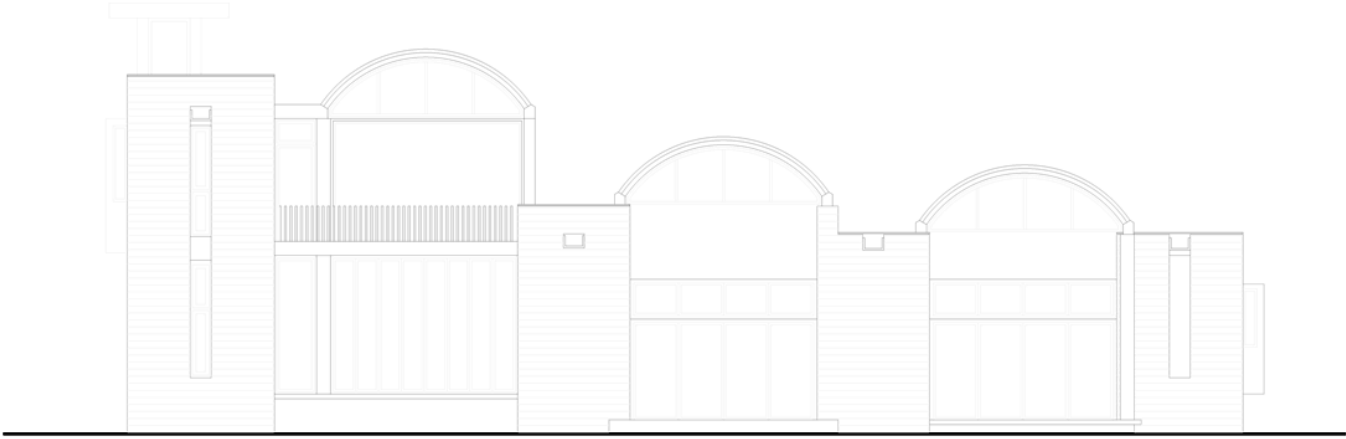
urbanNext Lexicon

Shah Houses
<https://urbannext.net/shah-houses/>

ISSN : 2575-5374

urbanNext Lexicon

Shah Houses
<https://urbannext.net/shah-houses/>



0 1 3 5 10  elevation b-b'

urbanNext Lexicon

Shah Houses
<https://urbannext.net/shah-houses/>



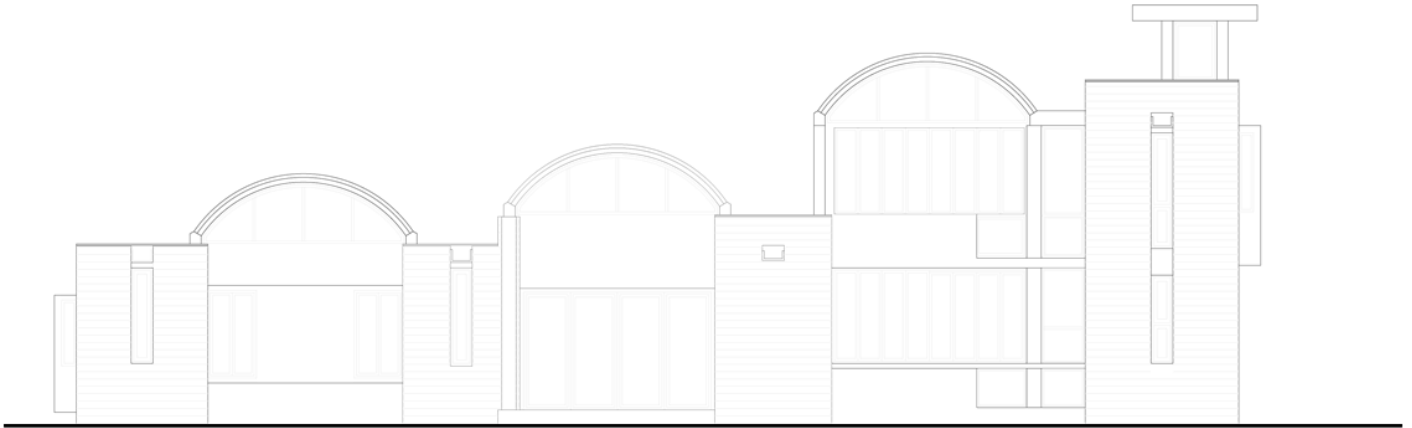

elevation c-c'

ISSN : 2575-5374

urbanNext Lexicon

Shah Houses
<https://urbannext.net/shah-houses/>

ISSN : 2575-5374



Ketan Shah Elevations and Sections

Soil from the site has been laboratory-tested and found to be suitable for the construction of load bearing walls. The age-old rammed earth building technique is introduced in a more sophisticated form with cement stabilisation to achieve a better standard of finish, more strength and water-resistance, and enabling a quicker modular method of building. Five per cent of cement is added in the sieved earth to make the mass water-resistant, thereby significantly adding to the wet compressive strength of the material. A team of four labourers can produce a 23cm monolithic wall of 2.2m in length per day.

urbanNext Lexicon

Shah Houses

<https://urbannext.net/shah-houses/>



ISSN : 2575-5374

urbanNext Lexicon

Shah Houses

<https://urbannext.net/shah-houses/>



Roofs are built using terracotta filler slabs, bricks as jack arches, and conical hollow vault elements designed specifically to achieve an affordable solution with low environmental impact that is beneficial for generating local employment.

ISSN : 2575-5374



The low-cost housing scheme is provided with eco-friendly building infrastructure for rainwater harvesting and waste water treatments systems in a single water tank with 3 separate spaces.



Atul Shah Plans



urbanNext Lexicon

Shah Houses
<https://urbannext.net/shah-houses/>

Atul Shah Sections

ISSN : 2575-5374

urbanNext Lexicon

Shah Houses
<https://urbannext.net/shah-houses/>

ISSN : 2575-5374