



# RIVAS-FUTURA UNDERGROUND STATION

*Posted on December 31, 2016 by urbanNext*



---

**Categories:** [Landínez + Rey](#), [Middle Density](#), [Project](#), [Territory and mobility](#)

**Tags:** [Dormitory satellite](#), [Facilities](#), [Madrid](#), [Mobility](#), [Project](#), [Railway infrastructure](#), [Rivas Vaciamadrid](#), [Spain](#), [Territorial Approach](#), [Urban infrastructure](#), [Urban mobility](#), [Urban mobility standards](#)

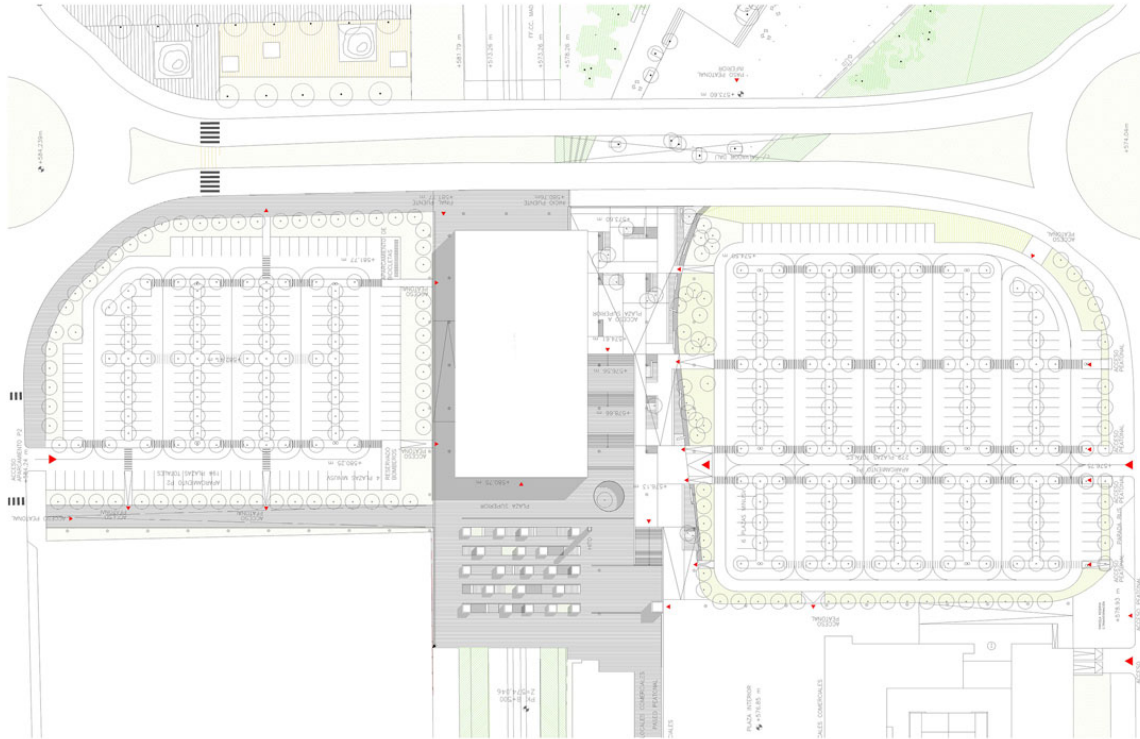


The building's architecture is a consequence of the surrounding context and its brief, which includes a new underground station, the public spaces to access the station and two parking areas. Located between two operating underground stations, the building process was determined by the aim of continuing with the train services during the works.





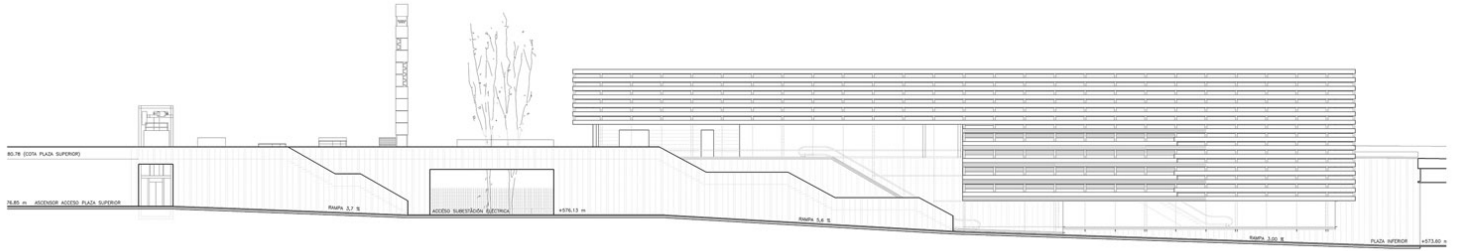
The station is placed alongside the existing train tracks, with a significant change of level on both sides of the tracks. Providing a single hall, accessed from the parking areas at both levels, in connection with the platforms at the lower level was one principle of the design.



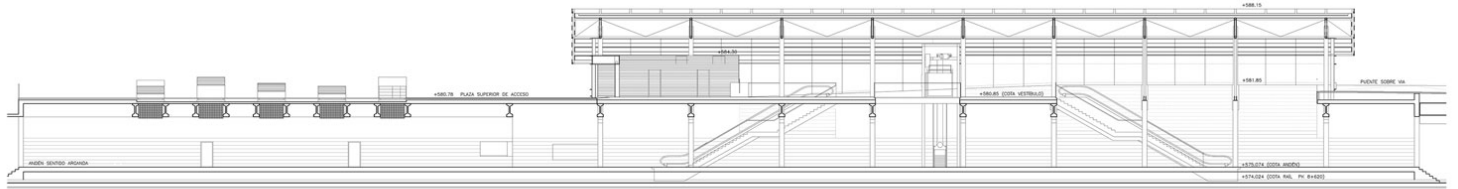
## Plan Podium

The design takes advantage of the existing topography to create a two-storey station as a podium with a shade covering floating above it.

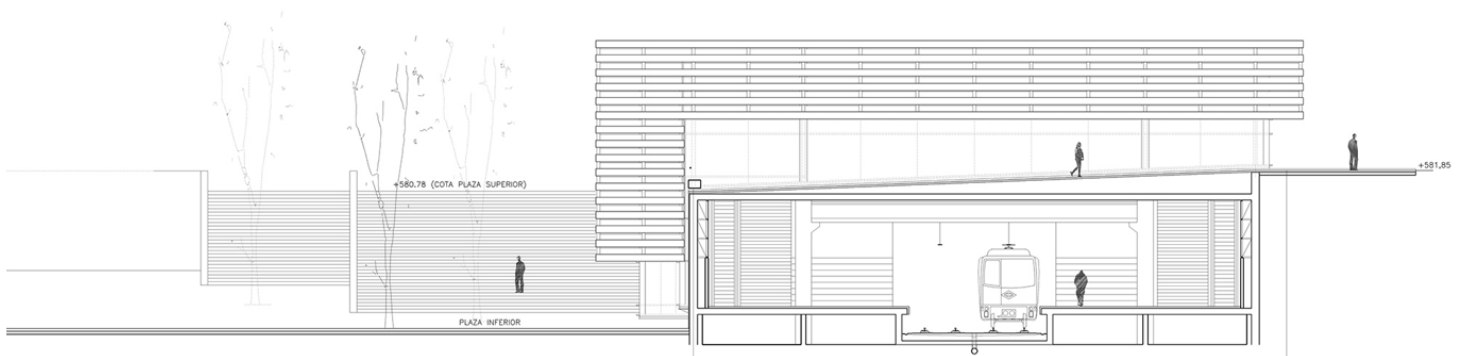
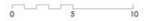




Elevation SW



Longitudinal Section



Cross Section





## Elevations & Sections

The podium accommodates platforms and plant rooms on the lower level, connected with the double-height hall above it.





Conceived as a dark ceramic volume, the podium defines a new public space on each level, connected with two parking areas, and a welcoming square on the upper level that provides access to the station's entrance hall.

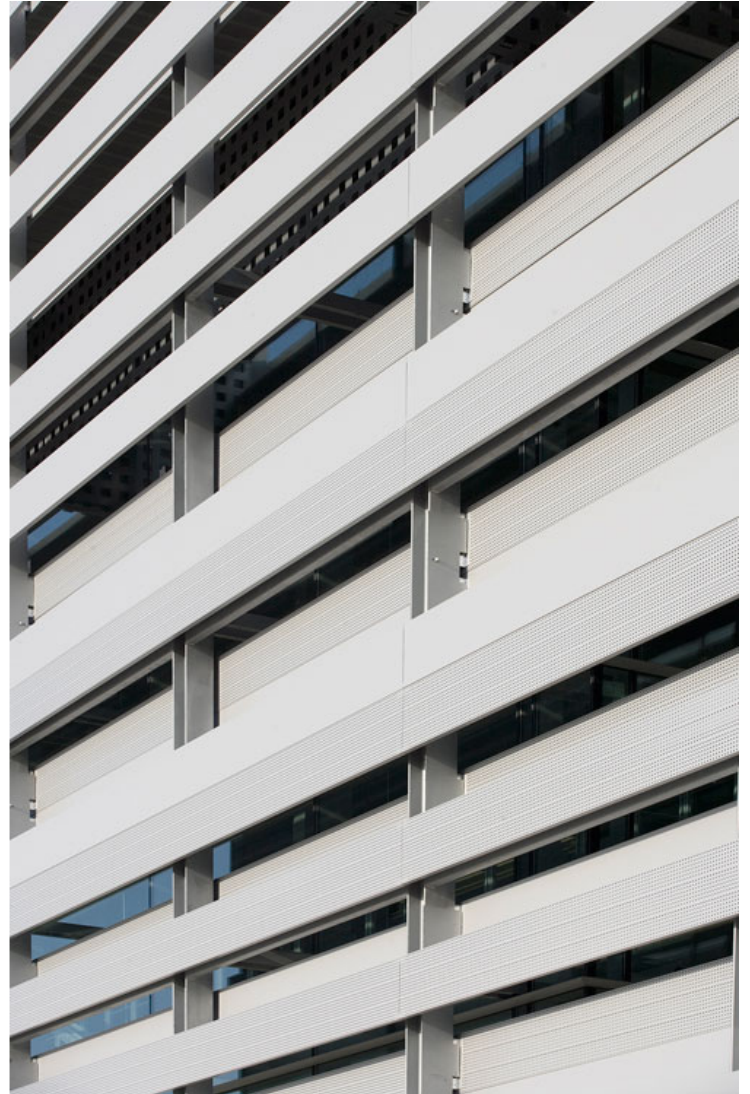




## Shade covering

Above the podium, a curtain wall with solar-control glazing provides visual continuity between the interior and the exterior square and defines the thermal controlled spaces.

A bioclimatic shade covering is created using linear aluminum louvers in front of the glazing.



It offers protection against direct sunlight from the west, thus avoiding overheating, and provides reflected natural lighting inside the spaces, avoiding glare. Also, there is a covered exterior area where the external stairs between public spaces are located.



