



REIGATE GRAMMAR SCHOOL: MASTERPLAN AND SPACE AUDIT

Posted on February 25, 2019 by martabuges



Categories: [Middle Density](#), [Project](#), [Territory and mobility](#), [Urban Paradigms](#), [Walters & Cohen](#)

Tags: [Brick](#), [Designing Climate](#), [Educational Building](#), [Educational Program](#), [Flexibility](#), [Library](#), [Masterplan](#), [Project](#), [Refitting Places](#), [School](#), [Territorial Approach](#), [Timber](#), [UK](#), [Ventilation](#), [Working Space](#)

urbanNext Lexicon

Reigate Grammar School: Masterplan and Space Audit
<https://urbannext.net/reigate-grammar-school/>

Following their competition win in 2013, Walters & Cohen first undertook a masterplan and space audit of the school's existing facilities, which were spread across two sites. At that time, the small parcel of land between them became available and was the ideal site for the new 1,620m² library and sixth form centre, funded by the Peter Harrison Foundation.



The new sixth form centre provides a link between the school's two main areas whilst also serving as the first stage of the broader masterplan, laying the groundwork for future developments.

ISSN : 2575-5374

urbanNext Lexicon

Reigate Grammar School: Masterplan and Space Audit

<https://urbannext.net/reigate-grammar-school/>



ISSN : 2575-5374

urbanNext Lexicon

Reigate Grammar School: Masterplan and Space Audit

<https://urbannext.net/reigate-grammar-school/>



The red-brick building reflects the materials, massing and pitched-roof typology of the attractive Victorian school estate. Inside, the library has a wonderfully calm atmosphere. Light filters in from the rooflights at the peak of the building, while bookshelves frame large windows that look out across the peaceful old churchyard. The acoustic treatment means that independent learning and small group work can take place side by side without fuss. Comfortable furniture and traditional work spaces on both floors give pupils more choice of how they would like to study.

ISSN : 2575-5374

urbanNext Lexicon

Reigate Grammar School: Masterplan and Space Audit
<https://urbannext.net/reigate-grammar-school/>



Provision of flexible, column-free spaces with natural ventilation was a driving principle of the overall design, and so a hybrid solution of concrete and steel was proposed. The use of RC slabs and

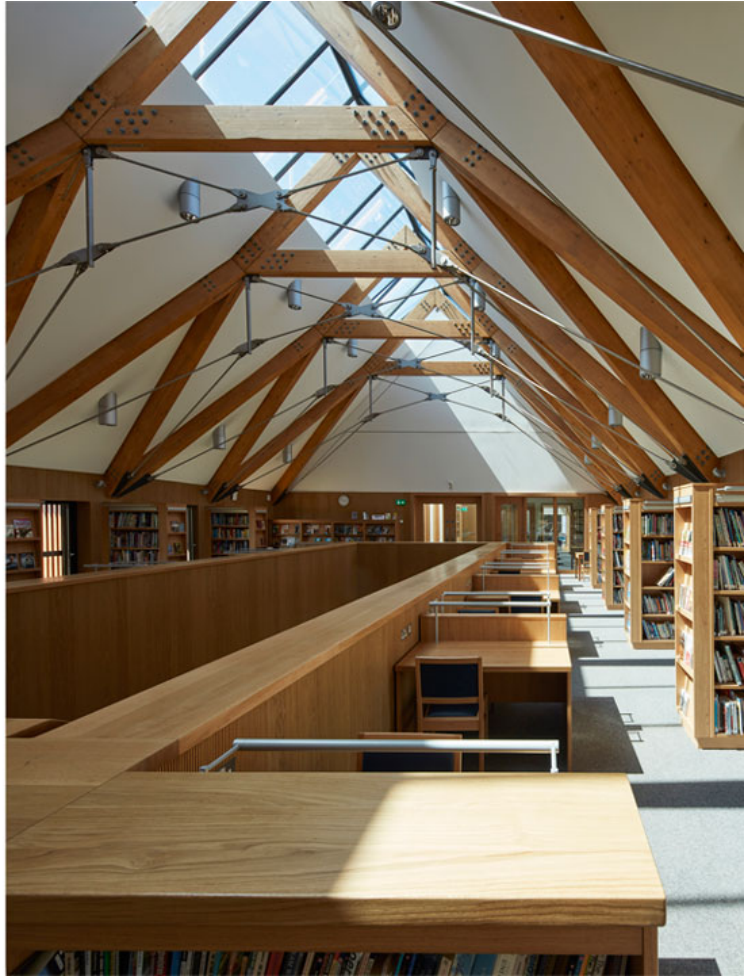
ISSN : 2575-5374

urbanNext Lexicon

Reigate Grammar School: Masterplan and Space Audit

<https://urbannext.net/reigate-grammar-school/>

concrete-encased steel beams has produced an efficient structure to accommodate the large spans desired by the client, whilst allowing the thermal mass of the in-situ concrete to be utilised in providing natural cooling during the day.



ISSN : 2575-5374

urbanNext Lexicon

Reigate Grammar School: Masterplan and Space Audit
<https://urbannext.net/reigate-grammar-school/>



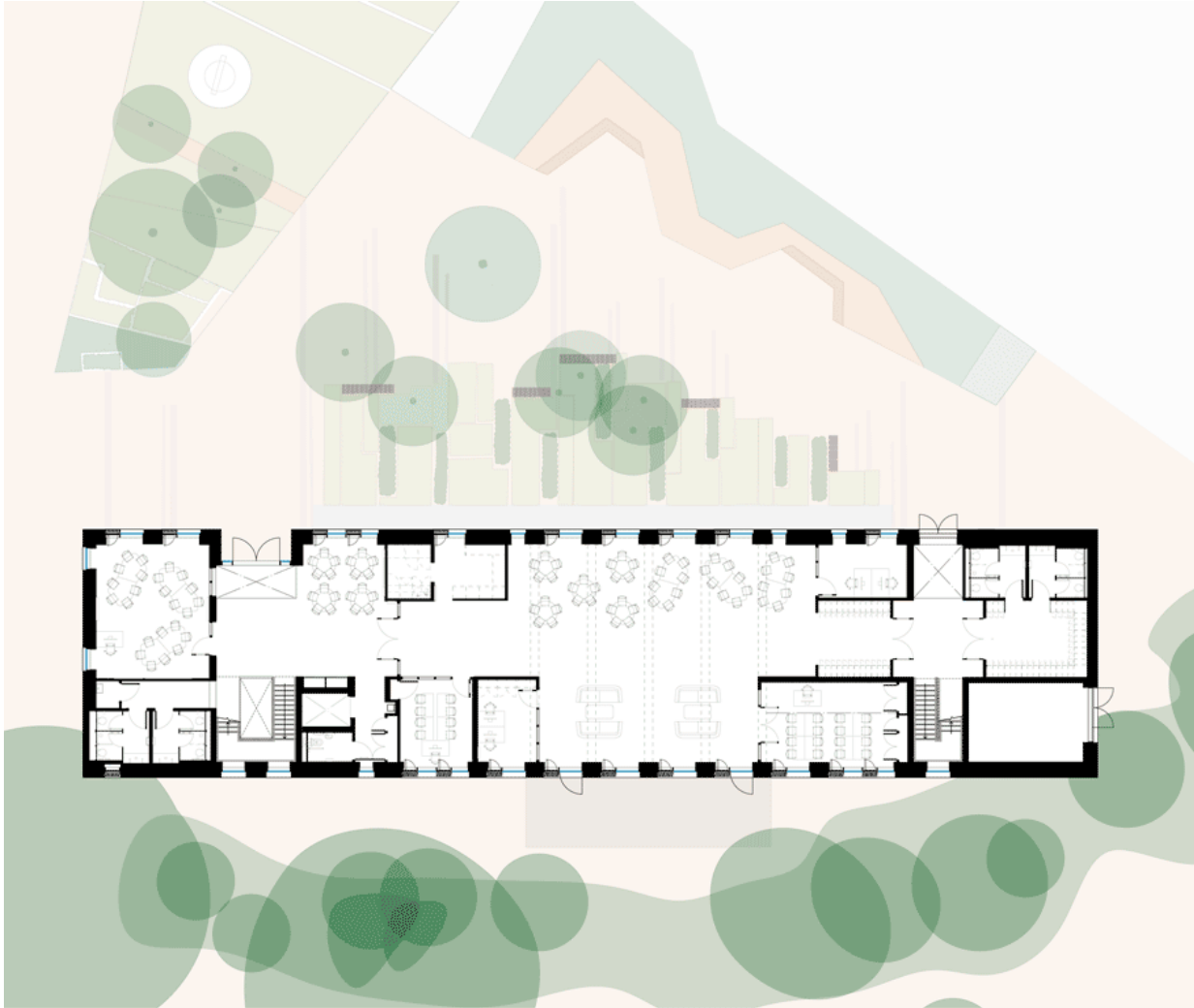
The sturdy exposed trusses and sense of openness continue throughout the building, connecting the library with the classrooms and offices either side. On the ground floor, the sixth form centre is a generous, mature space for study, socialising and lunch. Pupils and staff love the building, which has been described as 'the knot in the bow tie of the school'.

ISSN : 2575-5374

urbanNext Lexicon

Reigate Grammar School: Masterplan and Space Audit

<https://urbannext.net/reigate-grammar-school/>



Ground floor plan

ISSN : 2575-5374

urbanNext Lexicon

Reigate Grammar School: Masterplan and Space Audit

<https://urbannext.net/reigate-grammar-school/>

ISSN : 2575-5374