

# urbanNext Lexicon

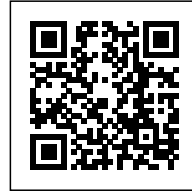
RÅÅ

<https://urbannext.net/ra%cc%8aa%cc%8a/>



**RÅÅ**

*Posted on May 3, 2016 by Urban UrbanNext*



**Categories:** [Dorte Mandrup Arkitekter](#), [Energy and sustainability](#), [Low Density](#), [Middle Density](#), [Project](#), [Territory and mobility](#)

**Tags:** [Built landscape](#), [Educational Building](#), [Energetic Approach](#), [Façade orientation](#), [Facilities](#), [Helsingborg](#), [Multifunctional space](#), [Natural dialogue](#), [Project](#), [Robinia wood](#), [Sloping dunes](#), [Sweden](#), [Territorial Approach](#), [Waterfront](#), [Wood](#)

ISSN : 2575-5374

# urbanNext Lexicon

RÅÅ

<https://urbannext.net/ra%cc%8aa%cc%8a/>

Situated on the scenic beach between the old Råå School and the Sea/ Øresund, the children's day care center embedded in the dune forms a conspicuously inconspicuous silhouette against the green and sand-colored setting of the small Swedish fishing village.



Yet despite matching the surroundings in shape and color, the building is an unusual eye-catcher.

ISSN : 2575-5374

# urbanNext Lexicon

RÅÄ

<https://urbannext.net/ra%cc%8aa%cc%8a/>



ISSN : 2575-5374

# urbanNext Lexicon

RÅÄ

<https://urbannext.net/ra%cc%8aa%cc%8a/>



ISSN : 2575-5374

# urbanNext Lexicon

RÅA

<https://urbannext.net/ra%cc%8aa%cc%8a/>

The design of the building is based on the surrounding landscape, with its flat slightly sloping dunes and the distinctive typology of the small fishermen's houses that originally stood on the dune-covered coastal strip.



ISSN : 2575-5374

# urbanNext Lexicon

RÅÅ

<https://urbannext.net/ra%cc%8aa%cc%8a/>



The day care center comprises four reinterpretations of these huts, set in a staggered arrangement and held together by a roof structure that stretches beyond their confines. Clad in the same wooden slats as the outer walls, this upper covering seems to continue the surrounding landscape onto the building, thus bringing about a visual interplay of architecture and nature.

ISSN : 2575-5374

# urbanNext Lexicon

concept



house



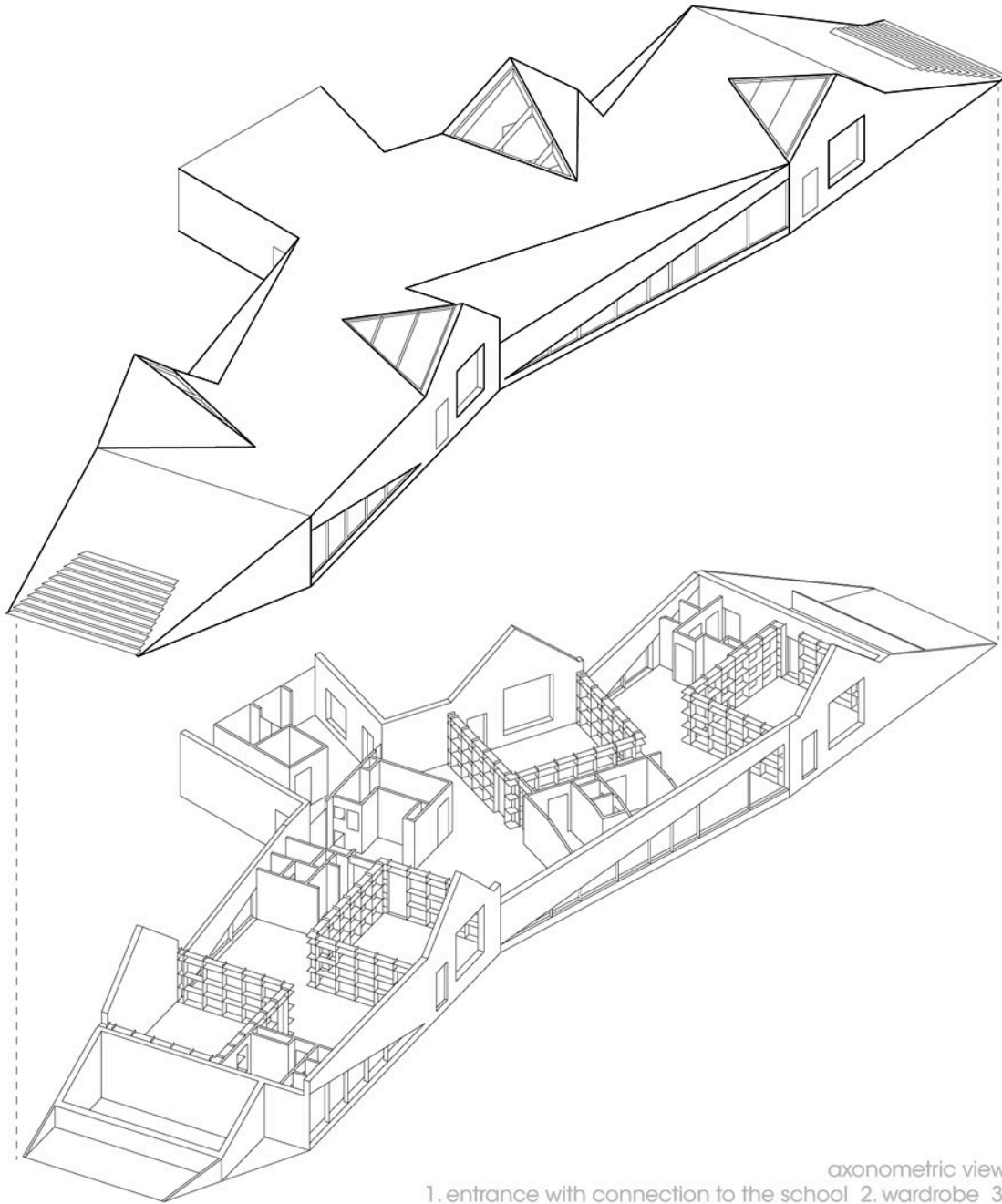
landscape

## RAA Concept Diagram

# urbanNext Lexicon

RÅÅ

<https://urbannext.net/ra%cc%8aa%cc%8a/>



axonometric view

1. entrance with connection to the school 2. wardrobe 3. space for a group of approx. ten children 4. common space for two groups of children 5. administration 6. cave 7. school

ISSN : 2575-5374



# urbanNext Lexicon

RÅÅ

<https://urbannext.net/ra%cc%8aa%cc%8a/>

## Axometric View

Acting as group rooms, the four above-mentioned “huts” form the core of the day care center and, as such, are connected by spacious multi-functional areas spanned by the sharply contoured roof. The facility is also directly linked to the adjacent primary school of Råå.



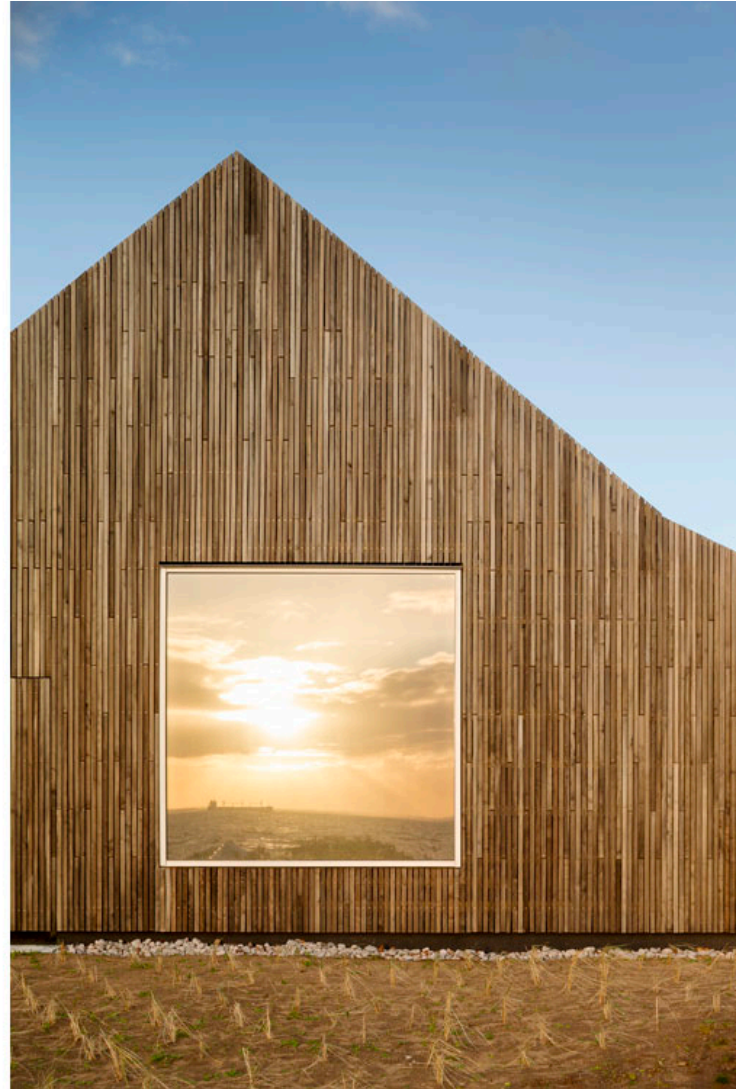
The large windows in the façade and roof create a close connection with the sea and the surrounding landscape, and they provide ideal daylight conditions all year round.

ISSN : 2575-5374

# urbanNext Lexicon

RÅÄ

<https://urbannext.net/ra%cc%8aa%cc%8a/>



The entire exterior is covered in long strips of multi-tonal Robinia wood, creating a weathered appearance.



Shallow steps run up the sides of the gently ramped roof, while triangular shards of glazing create windows that follow the angles of the walls and roof.

ISSN : 2575-5374

# urbanNext Lexicon

RÅÅ

<https://urbannext.net/ra%cc%8aa%cc%8a/>

ISSN : 2575-5374