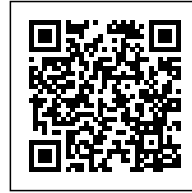


Powering Transformation.

Teresa Batlle Pagès, in regards with the Contest for Universities organised by ASA

POWERING TRANSFORMATION

Posted on June 18, 2016 by urbanNext



Categories: [Energy and sustainability](#), [Essay](#), [High Density](#), [Teresa Batlle Pagès](#)

Tags: [Architecture's challenge](#), [Building regulations](#), [Built environment](#), [Challenge](#), [City challenge](#), [Culture](#), [Ecological researches](#), [Education](#), [Essay](#), [New Statements on Nature](#), [Redesigned city](#), [Shaping environments](#), [Social commitment](#), [Social environment](#), [Sustainability](#), [Sustainable behaviors](#), [Urban culture](#), [Urban exploration](#), [Urban Paradigms](#)

urbanNext Lexicon

Powering Transformation
<https://urbannext.net/powering-transformation/>

The global awareness of proposing a new way of planning our natural and urban environment forces us to consider the city and the territory from a transversal and multidisciplinary approach. In fact, sustainability must be the key vector for the construction of new urban environments and, consequently, it should be planned together with environmental aspects, linked to social concerns and also compatible with the available economic resources.

ISSN : 2575-5374

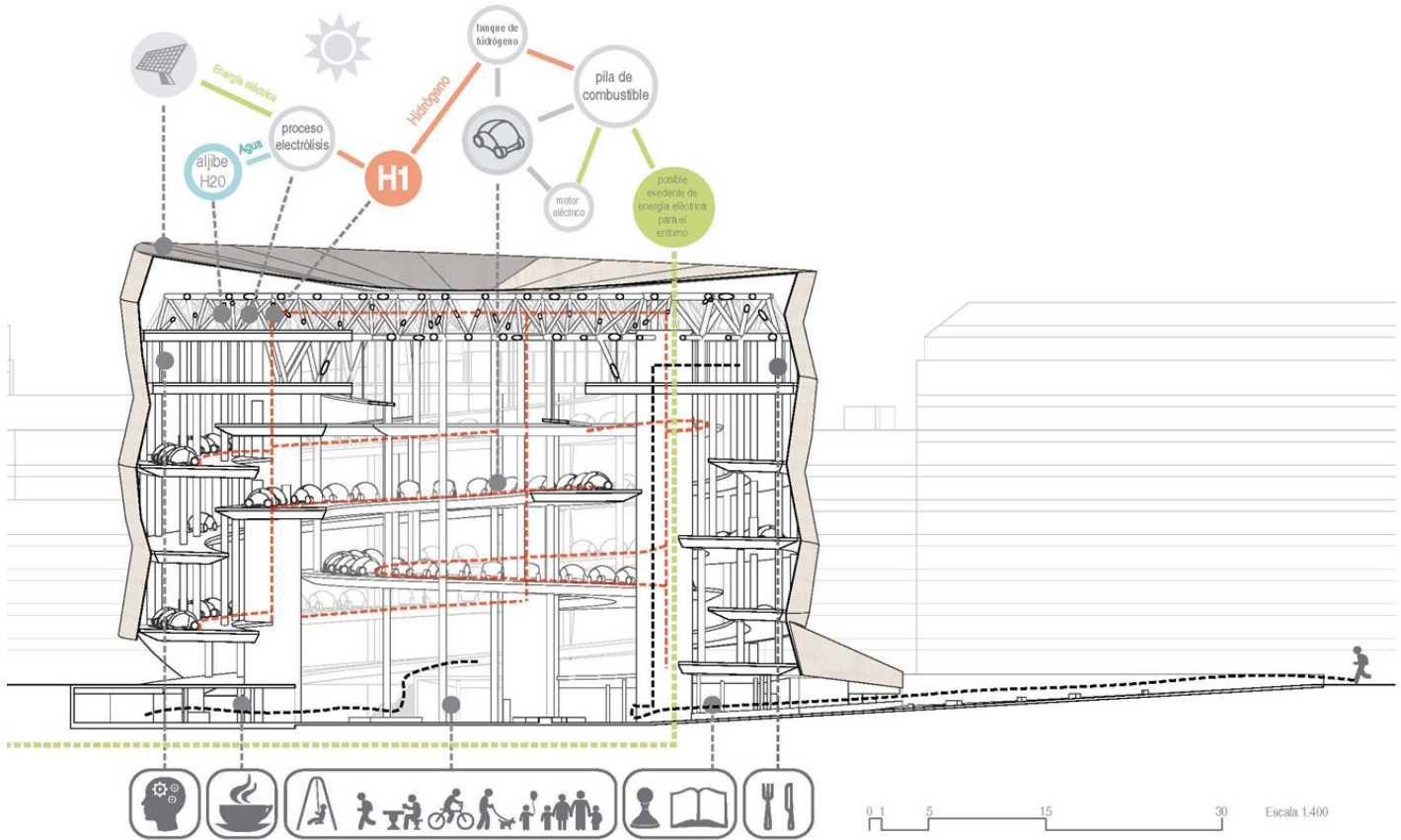
urbanNext Lexicon

Powering Transformation
<https://urbannext.net/powering-transformation/>

estación energética de vehículos de préstamo y espacio de encuentro colectivo, Ensanche Izquierdo, Barcelona
Tres - después de la propuesta



ISSN : 2575-5374



Plugged Mobility_ Car Loan Energy Station in Barcelona. Sevilla Polytechnical University. Spain (PT20)

This requires sharing in an inter-scalar vision of architecture, which, even if it is central, allows us to intervene from different realities, cultures and territories, as well as in varying climatic and environmental conditions. Consequently, architecture – and the habitability of the spaces created by it – should become a catalyst for multiple disciplines and knowledge. It should be interdisciplinary, not in a way that can be understood as a style, but through its ability to implement into reality the paradigm shifts of contemporary society.

As architects, we are then obligated to understand the right questions that society calls on us to respond when we are building living environments, the new questions that emerge and that need to be interpreted and answered in themselves and as they relate to other disciplines and scales.

urbanNext Lexicon

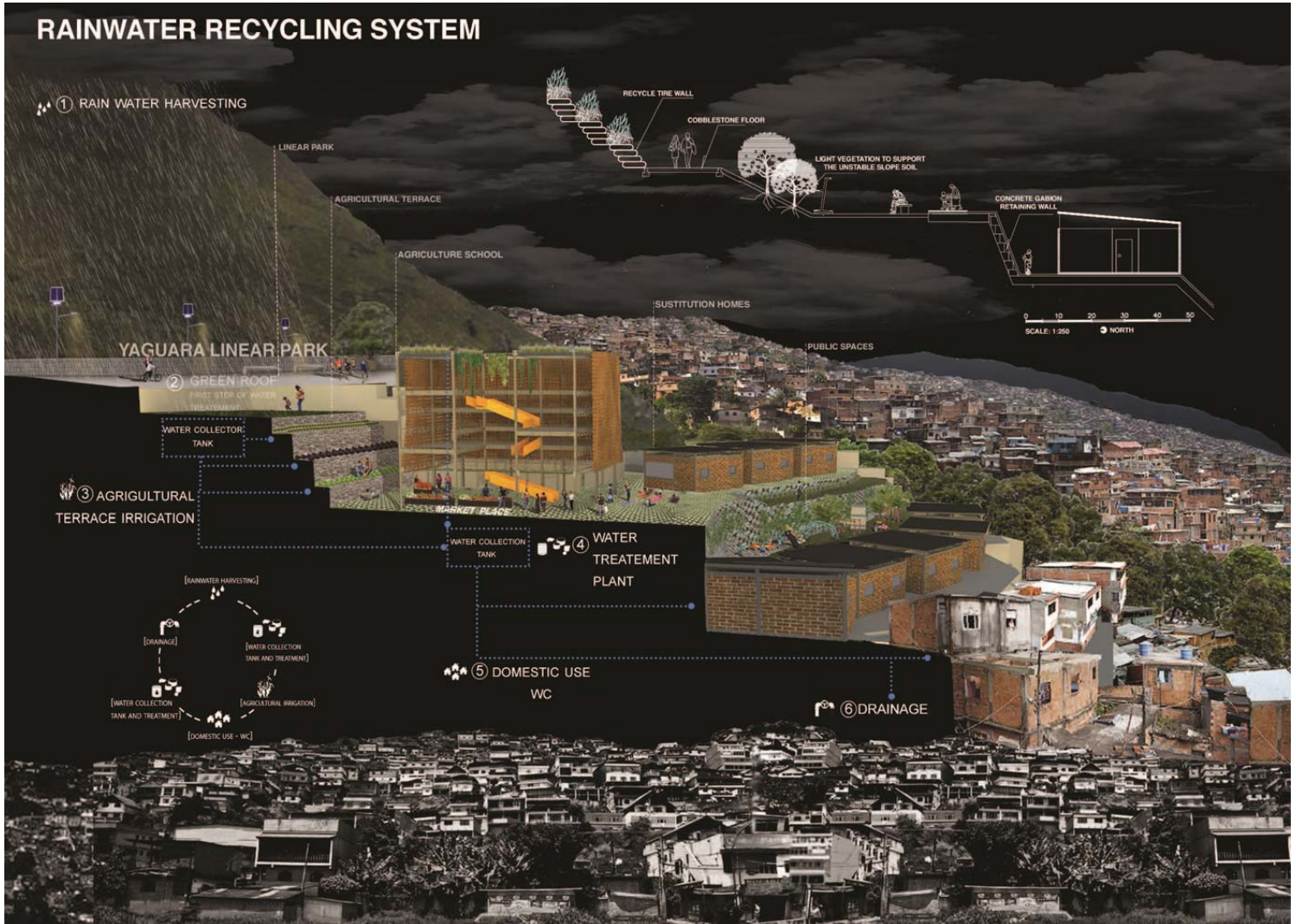
Powering Transformation
<https://urbannext.net/powering-transformation/>

At this time, we have plenty of data about the environmental impact of our lifestyles and their construction. We are moving forward in social behaviours that respond to our need for change, yet we still have a long way to go in terms of how these new impulses for transformation adjust to new economic, technological and professional models.

This context, briefly described above, is the reason behind the contest between Spanish universities, organised by ASA (Asociación de Arquitectura y Sostenibilidad) under the slogan "Powering Transformation". The aim of the contest was to provide answers, from very diverse projects and under very different circumstances, to the cultural and physiological complexity of territories, as well as the resources needed to ensure their spaces achieve optimal and sustainable habitability.

urbanNext Lexicon

Powering Transformation
<https://urbannext.net/powering-transformation/>



Waternet_ La Yaguara Resilience Park. Simon Bolivar University. Venezuela (PT19)

Proposals involving natural spaces focused the problematic and solutions on the interaction with climate, water, resources and the culture of the site. Proposals were also requested to make an effort to reconcile natural forces with settlement needs, where work is integrated into small autonomous networks, which enable new production processes and economic structures, providing resources and an amount of energy that varies over time.

ISSN : 2575-5374

urbanNext Lexicon

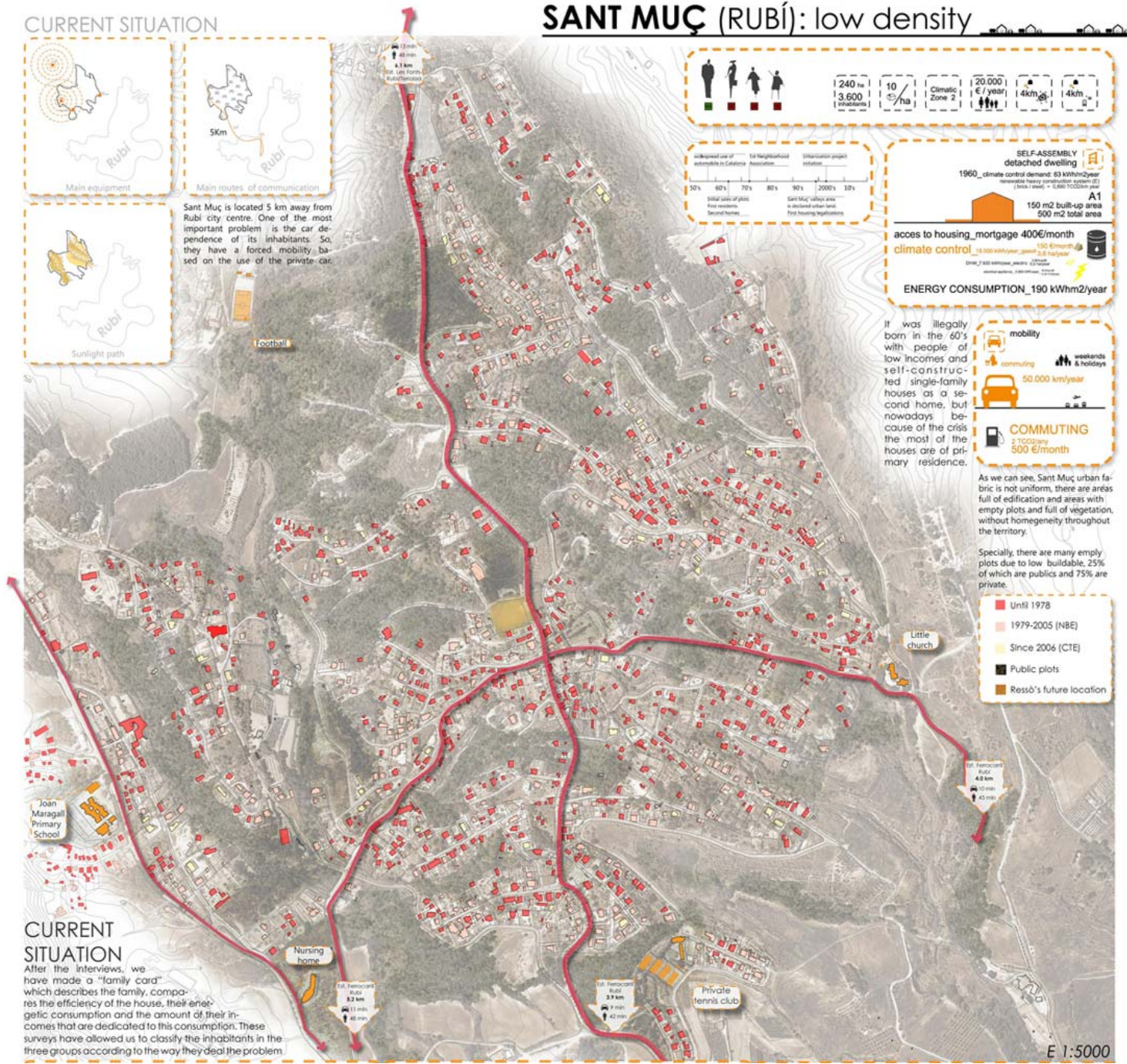
Powering Transformation
<https://urbannext.net/powering-transformation/>

SANT MUÇ (RUBÍ): low density

CURRENT SITUATION



Sant Muç is located 5 km away from Rubí city centre. One of the most important problem is the car dependence of its inhabitants. So, they have a forced mobility based on the use of the private car.



CURRENT SITUATION

After the interviews, we have made a "family card" which describes the family, compares the efficiency of the house, their energetic consumption and the amount of their incomes that are dedicated to this consumption. These surveys have allowed us to classify the inhabitants in the three groups according to the way they deal the problem

240 ha
3.600 inhabitants

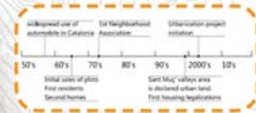
10 €/ha

Climatic Zone 2

20.000 €/year

14km²

14km²



SELF-ASSEMBLY detached dwelling

1960_ climate control demand: 63 kWh/m²year
reference heavy construction system (B) (brick + wall) = 0,860 TCC200m²year

150 m² built-up area
500 m² total area

A1

access to housing mortgage 400€/month

climate control 18.000 kWh/year (2000's)

ENERGY CONSUMPTION 190 kWh/m²year

mobility

commuting 50.000 km/year

weekends & holidays

COMMUTING 2 TCC200m²year 500 €/month

It was illegally born in the 60's with people of low incomes and self-constructed single-family houses as a second home, but nowadays because of the crisis the most of the houses are of primary residence.

As we can see, Sant Muç urban fabric is not uniform, there are areas full of edification and areas with empty plots and full of vegetation, without homogeneity throughout the territory.

Specially, there are many empty plots due to low buildable, 25% of which are public and 75% are private.

- Until 1978
- 1979-2005 (NBE)
- Since 2006 (CTE)
- Public plots
- Resso's future location

L'Interet Collectif. Polytechnical University of Catalonia - El Vallès - UPC - ETSAV. Barcelona. Spain (PT46)

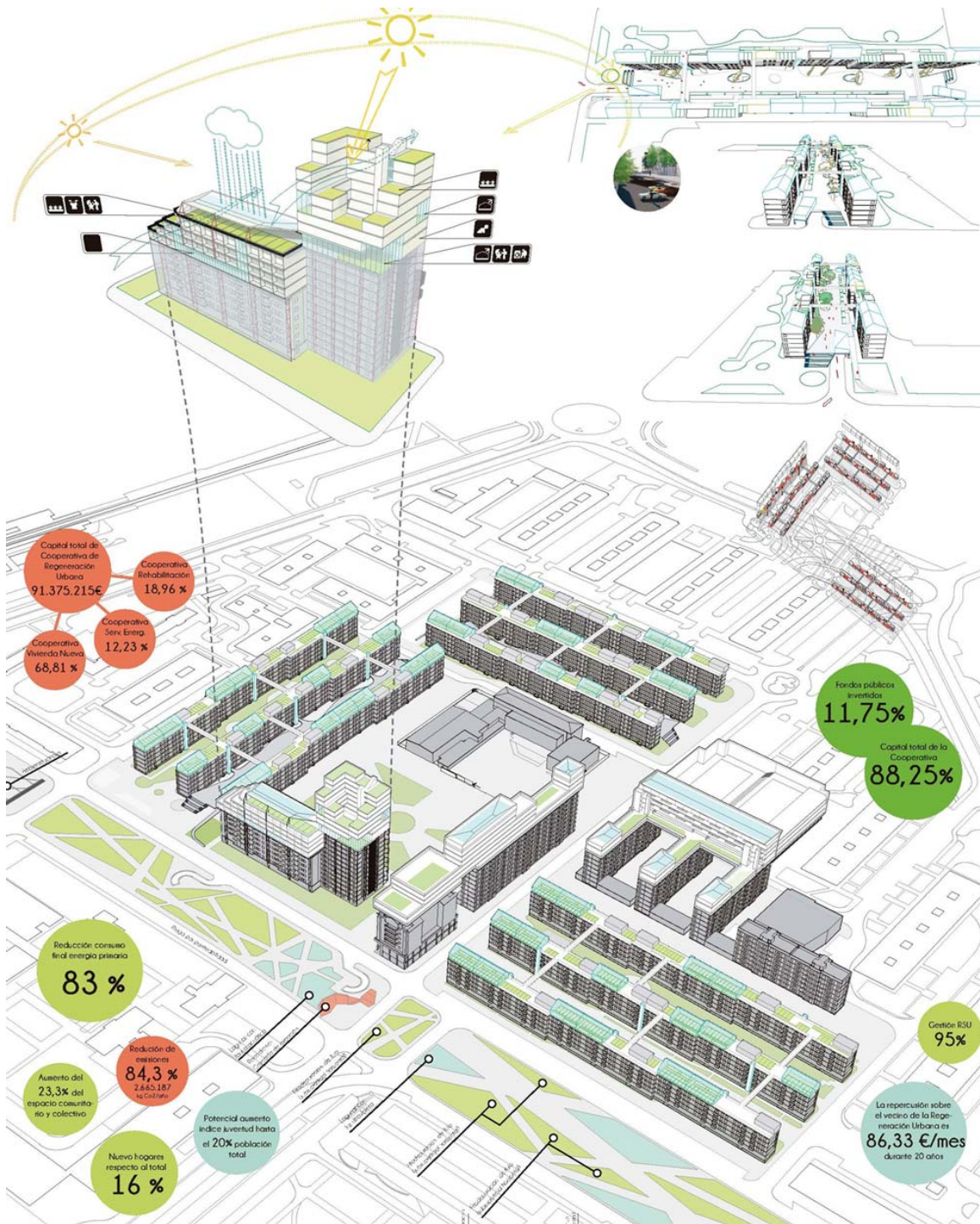
Those projects focused on the city and urban spaces questioned the fragmentation and specialisation of uses according to current planning, which is obsolete and incompatible with this new inter-scale and multidisciplinary approach. In fact, all of the projects focused on the transformation of existing spaces that have already been built, and their challenge has been to reactivate and renew pre-existing elements.

Therefore, we can conclude that in light of these projects – received from very diverse places and conditions – innovation is reflected in concrete and realistic proposals, in brave and creative implementation, in close dialogue between the local and the global, the natural and the urban, the pre-existing and the new.

It is important, as Peter Rich – member of the contest jury – says, “to understand the new questions, those that arise from culture, because those are the ones that bring wealth to the work we design”. In conclusion, a culture based on knowledge is a solid foundation for reinterpreting architecture, the city and landscape; and at the same time, that culture and its variations serve as the fuel for innovations and transformations.

urbanNext Lexicon

Powering Transformation
<https://urbannext.net/powering-transformation/>



ISSN : 2575-5374

Cooperativeness for Sustainable Regeneration. European University. Madrid. Spain (PT39)

urbanNext Lexicon

Powering Transformation
<https://urbannext.net/powering-transformation/>

ISSN : 2575-5374