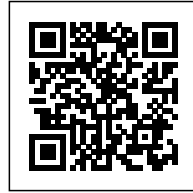




## PARKEERGARAGE A1: COMMUNITY LANDMARK

*Posted on May 31, 2021 by martabuges*



---

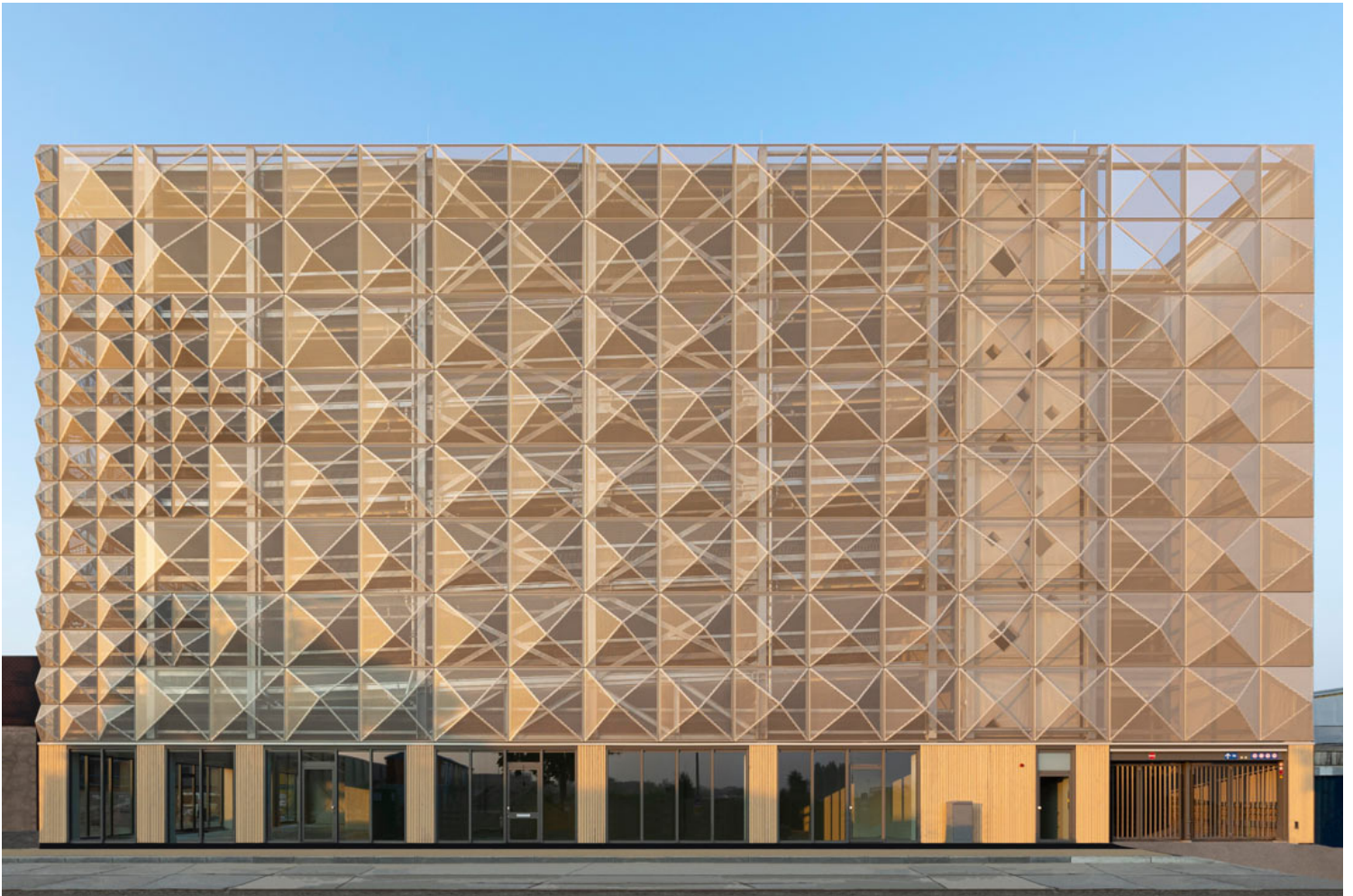
**Categories:** [Middle Density](#), [Project](#),  
[Technology and fabrication](#), [Urban Paradigms](#),  
[XVW Architectuur](#)

**Tags:** [Amsterdam](#), [Community Facilities](#),  
[Flexibility](#), [Landmark](#), [Lightweight Materials](#),  
[Prefabrication](#), [Project](#), [The Netherlands](#),  
[Transportation](#)

# urbanNext Lexicon

Parkeergarage A1: Community Landmark  
<https://urbannext.net/parkeergarage-a1/>

XVW architectuur has completed a community car park incorporating a healthcare center at ground level in Buiksloterham in the north of Amsterdam. Buiksloterham is a fast-developing work/live area stretching across a former industrial waterfront. The new building responds to this forward-looking spirit with its sleek geometric exterior and landmark quality, which create a sense of arrival to Buiksloterham.

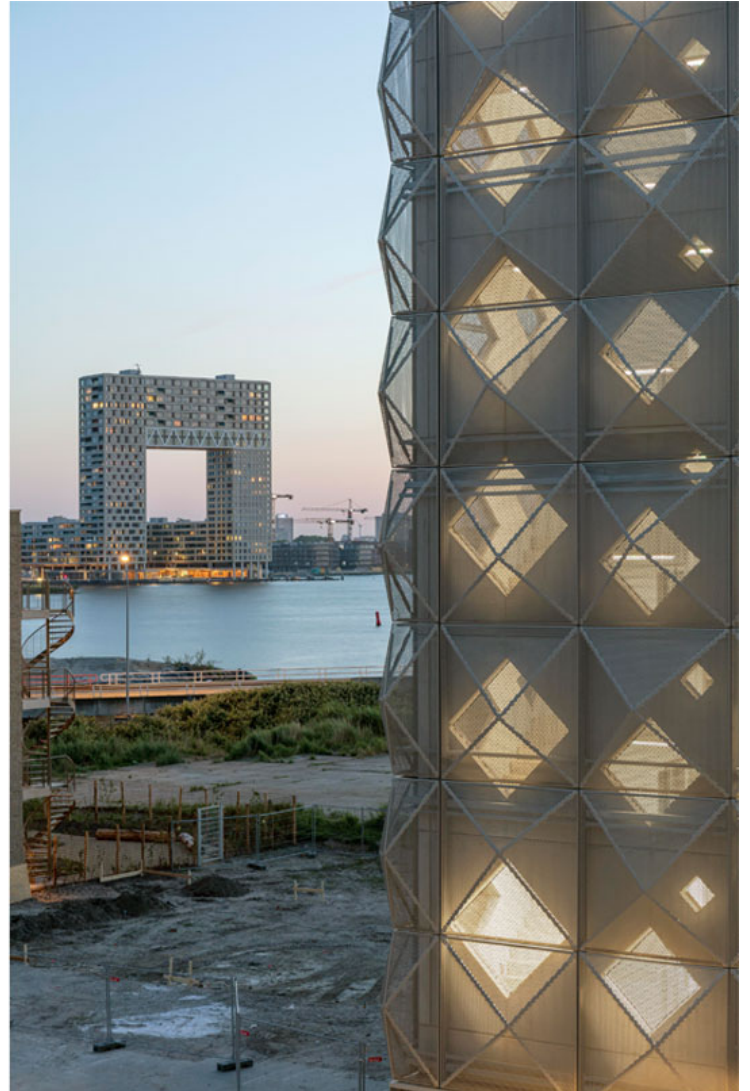
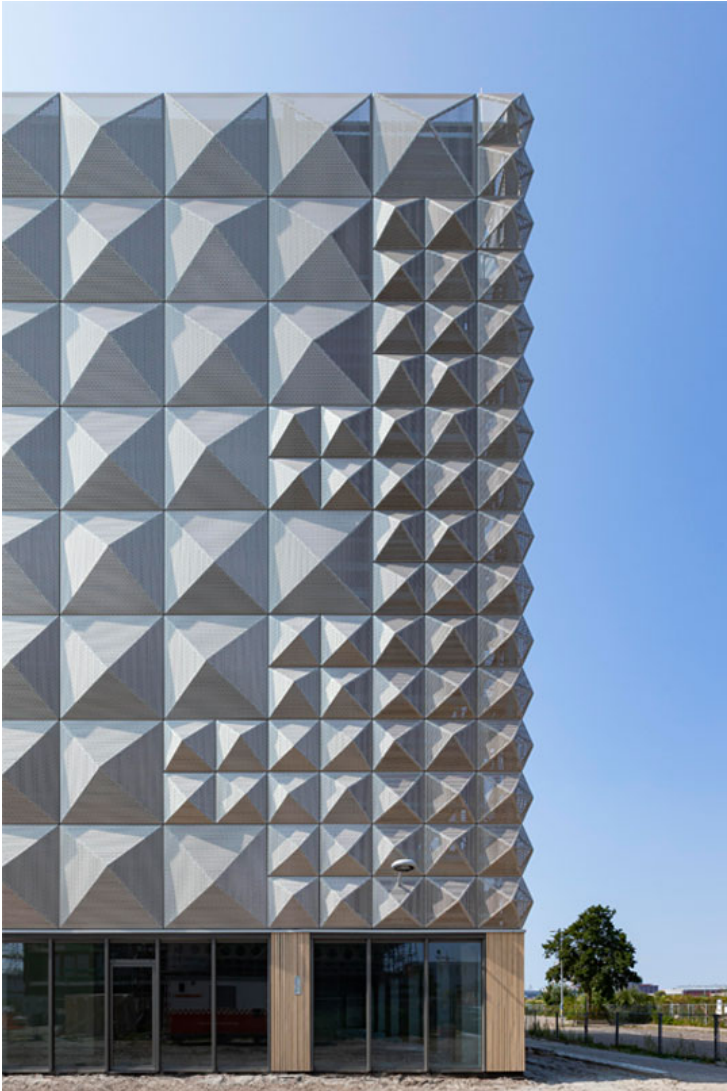


The car park is part of a masterplan drawn up by Studio Nine Dots for the de Alliantie housing corporation. By concentrating parking in the neighborhood, local streets are freed from stationary vehicles allowing food markets, among other civic activities, to spill into the public realm.

ISSN : 2575-5374

# urbanNext Lexicon

Parkeergarage A1: Community Landmark  
<https://urbannext.net/parkeergarage-a1/>



This less conventional and more flexible approach to urban design is led by residents and focuses on opportunities for self-build homes, a provision for social housing and work/home units. Attracting both collectives and small-scale developers is key to this inclusive vision for Buiksloterham.

ISSN : 2575-5374

# urbanNext Lexicon

Parkeergarage A1: Community Landmark  
<https://urbannext.net/parkeergarage-a1/>

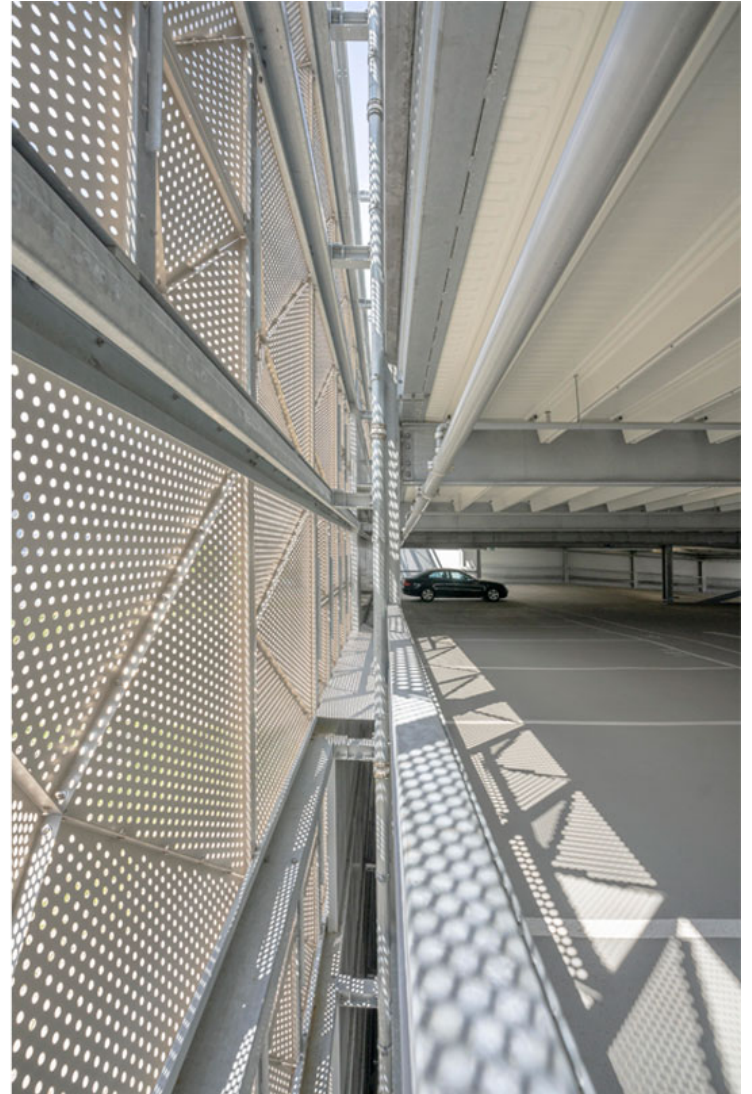


Parkeergarage A1 is the first of two car parks in Buiksloterham designed by XVW architectuur. When the project is complete, these will form what the architects describe as "two bookends that border the development on the east and west sides." Together they will provide all the required parking for the local community. Parkeergarage A1 has 250 spaces. Like a stable with horses, the building is a place where drivers access their ride when required rather than parking outside their homes

ISSN : 2575-5374

# urbanNext Lexicon

Parkeergarage A1: Community Landmark  
<https://urbannext.net/parkeergarage-a1/>



The design of Parkeergarage A1 had to answer the question of how this transport infrastructure building could find its rightful place in the neighborhood. How does a car park relate to the houses and apartments built next to it? The distinctive quality of the steel mesh diagrid elevations of Parkeergarage A1 address this question by making it read less like a car park per se and more like an entrance to the neighborhood. The relief pattern of the façade catches the light and animates its form in ways that break down the volume of the building while playing on the industrial past of its surroundings and its particular building typologies, like the non-descript sheds that give little

ISSN : 2575-5374

# urbanNext Lexicon

Parkeergarage A1: Community Landmark  
<https://urbannext.net/parkeergarage-a1/>

indication of what is contained within them.

Xander Vermeulen Windsant says: "Our design has covered the car park with a skin that does not deny the parking function but abstracts it. Only up close do you see car-parking floors through the perforation of the façade panels. This allows the building to have a role beyond parking and be interpreted more like a threshold or gateway to its neighborhood."

The faceting and the custom-made paint – matt but still reflecting the light – give the car park a chameleon-like appearance. It reacts to color and light in the area and changes color when you walk or drive past it.



ISSN : 2575-5374

# urbanNext Lexicon

Parkeergarage A1: Community Landmark  
<https://urbannext.net/parkeergarage-a1/>

On the street level, timber slatted cladding introduces a warmer, tactile and more human interface. The natural wooden finish contrasts with the cooler sleek steel architecture above.

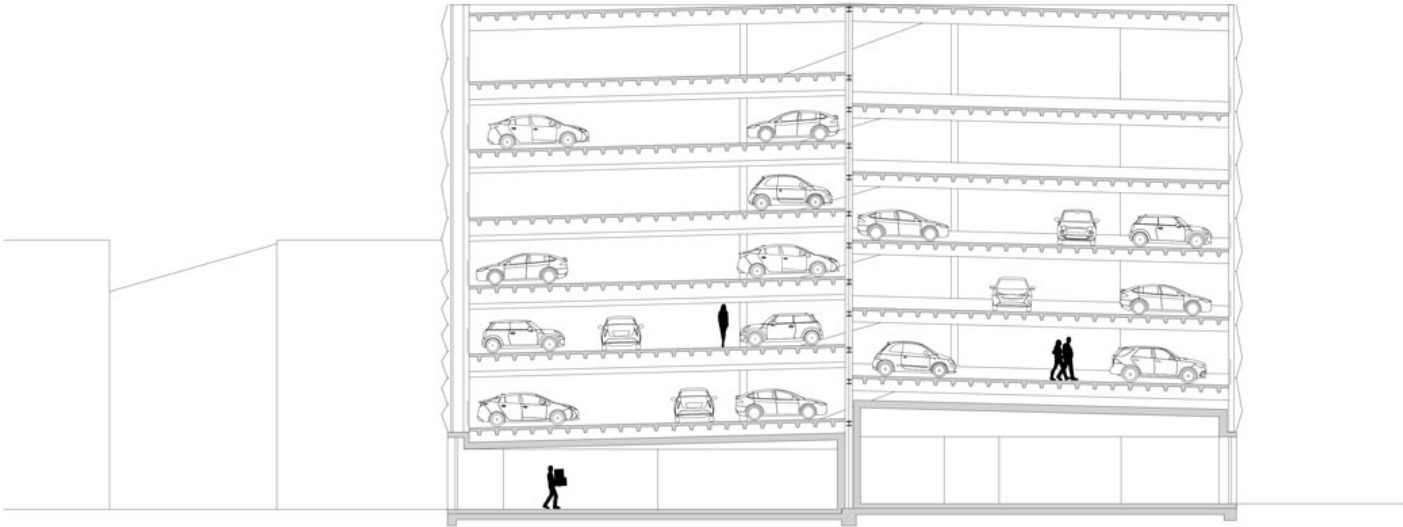
At ground level, the building houses a healthcare center – an example of a new phenomenon that is seeing infrastructure projects increasingly provide social value by serving their communities in a broader way. At roof level, solar panels contribute to the generation of hot water for the entire neighborhood, making Parkeergarage A1 a “service hub” that supports the daily life of the district and plays an important role in Buiksloterham reaching its carbon-reduction targets.



ISSN : 2575-5374

# urbanNext Lexicon

Parkeergarage A1: Community Landmark  
<https://urbannext.net/parkeergarage-a1/>





# urbanNext Lexicon

Parkeergarage A1: Community Landmark  
<https://urbannext.net/parkeergarage-a1/>