

NIEUW LAND NATIONAL PARK: AN ATTRACTIVE AND EDUCATIONAL EXPERIENCE

Posted on March 13, 2019 by martabuges



Categories: [Energy and sustainability](#), [Essay](#), [Low Density](#), [Mecanoo](#), [Territory and mobility](#), [Urban Paradigms](#)

Tags: [Accessibility](#), [Amsterdam](#), [Climate change](#), [Continuity](#), [development](#), [Ecological design](#), [Ecological reserve](#), [Ecosystem](#), [Educational](#), [Landscape](#), [Masterplan](#), [Natural connectors](#), [Natural dialogue](#), [Natural Park](#), [Project](#), [The Netherlands](#), [User's experience](#), [Waterfront](#), [Watery Territory](#)

urbanNext Lexicon

Nieuw Land National Park: An Attractive and Educational
Experience

<https://urbannext.net/nieuw-land-national-park/>

"Nieuw Land will be a new kind of national park, one in which visitor experience is central. The park will be an attractive and educational experience for all generations and will bring the city and nature closer together. It will feature many dikes, marshlands and reed landscapes, new islands, and even more flora and fauna – with space for rest, darkness to view the starry sky, wilderness and adventure." – Francine Houben

ISSN : 2575-5374

urbanNext Lexicon

Nieuw Land National Park: An Attractive and Educational
Experience

<https://urbannext.net/nieuw-land-national-park/>

ISSN : 2575-5374



Man-made Nature Park

The Nieuw Land National Park is the largest man-made natural park in the world. It is located near the metropolitan region of Amsterdam and sits on the bottom of the former Zuiderzee (Southern Sea). Nieuw Land covers 29,000 hectares and incorporates numerous existing nature reserves: the Oostvaardersplassen, the Lepelaarplassen, Marker Wadden and Trintelzand. These reserves would never have existed without the land reclamation works in Flevoland in the 1950s and 1960s – it was unintentional, in fact, that nature was given free rein over large areas of the reclaimed land.

urbanNext Lexicon

Nieuw Land National Park: An Attractive and Educational
Experience

<https://urbannext.net/nieuw-land-national-park/>



Nieuw Land is first and foremost a bird reserve, with dozens of protected species attracted by the ample food supply and sheltered places for rest and breeding. The integration of four nature reserves into one National Park offers new opportunities for strengthening the ecological significance of Nieuw Land and for securing the future of this area. After all, Nieuw Land sits in the middle of a dynamic metropolitan region and will be impacted by climate change.

ISSN : 2575-5374

urbanNext Lexicon

Nieuw Land National Park: An Attractive and Educational
Experience

<https://urbannext.net/nieuw-land-national-park/>

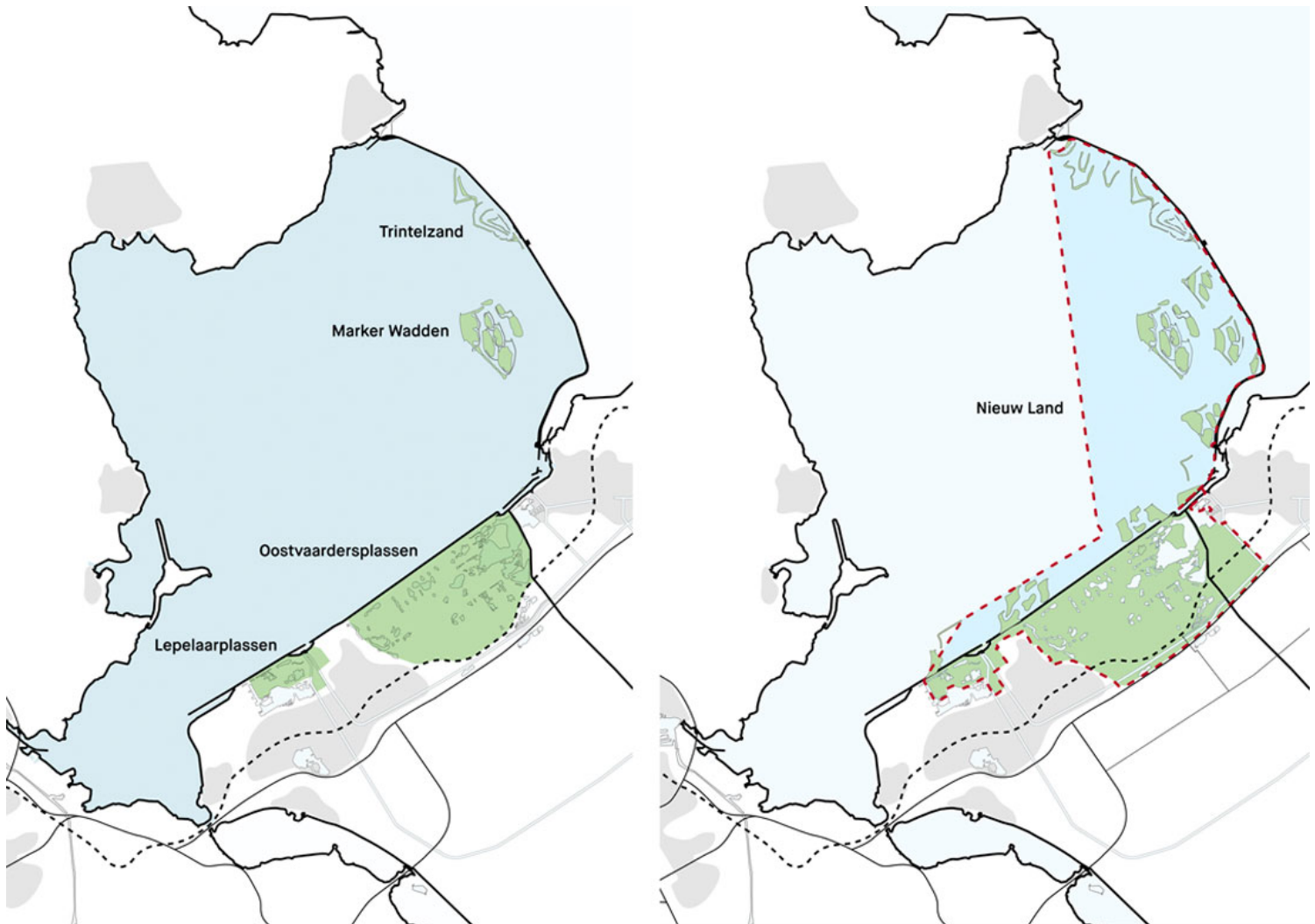
ISSN : 2575-5374

urbanNext Lexicon

Nieuw Land National Park: An Attractive and Educational
Experience

<https://urbannext.net/nieuw-land-national-park/>

ISSN : 2575-5374



Robust Ecosystem

The development of a robust and resilient ecosystem has been an ongoing process for several years; this includes introducing more water into the Oostvaardersplassen area and the Lepelaarplassen, as well as the construction of new islands in the Marker Wadden and Trintelzand. The Nieuw Land masterplan is the next step in this process. The key nature reserves – Oostvaardersplassen, the Lepelaarplassen, Marker Wadden and Trintelzand – will be enlarged and the connections between them will be strengthened. Adding islands, marshlands, creeks, wet

urbanNext Lexicon

Nieuw Land National Park: An Attractive and Educational
Experience

<https://urbannext.net/nieuw-land-national-park/>

grasslands and water connections will create a continuous ecosystem. It will thus be easier for birds to forage in one area and rest or breed in another.

ISSN : 2575-5374

urbanNext Lexicon

Nieuw Land National Park: An Attractive and Educational
Experience

<https://urbannext.net/nieuw-land-national-park/>

ISSN : 2575-5374

urbanNext Lexicon

Nieuw Land National Park: An Attractive and Educational
Experience

<https://urbannext.net/nieuw-land-national-park/>



ISSN : 2575-5374

urbanNext Lexicon

Nieuw Land National Park: An Attractive and Educational
Experience

<https://urbannext.net/nieuw-land-national-park/>

ISSN : 2575-5374

urbanNext Lexicon

Nieuw Land National Park: An Attractive and Educational
Experience
<https://urbannext.net/nieuw-land-national-park/>

ISSN : 2575-5374



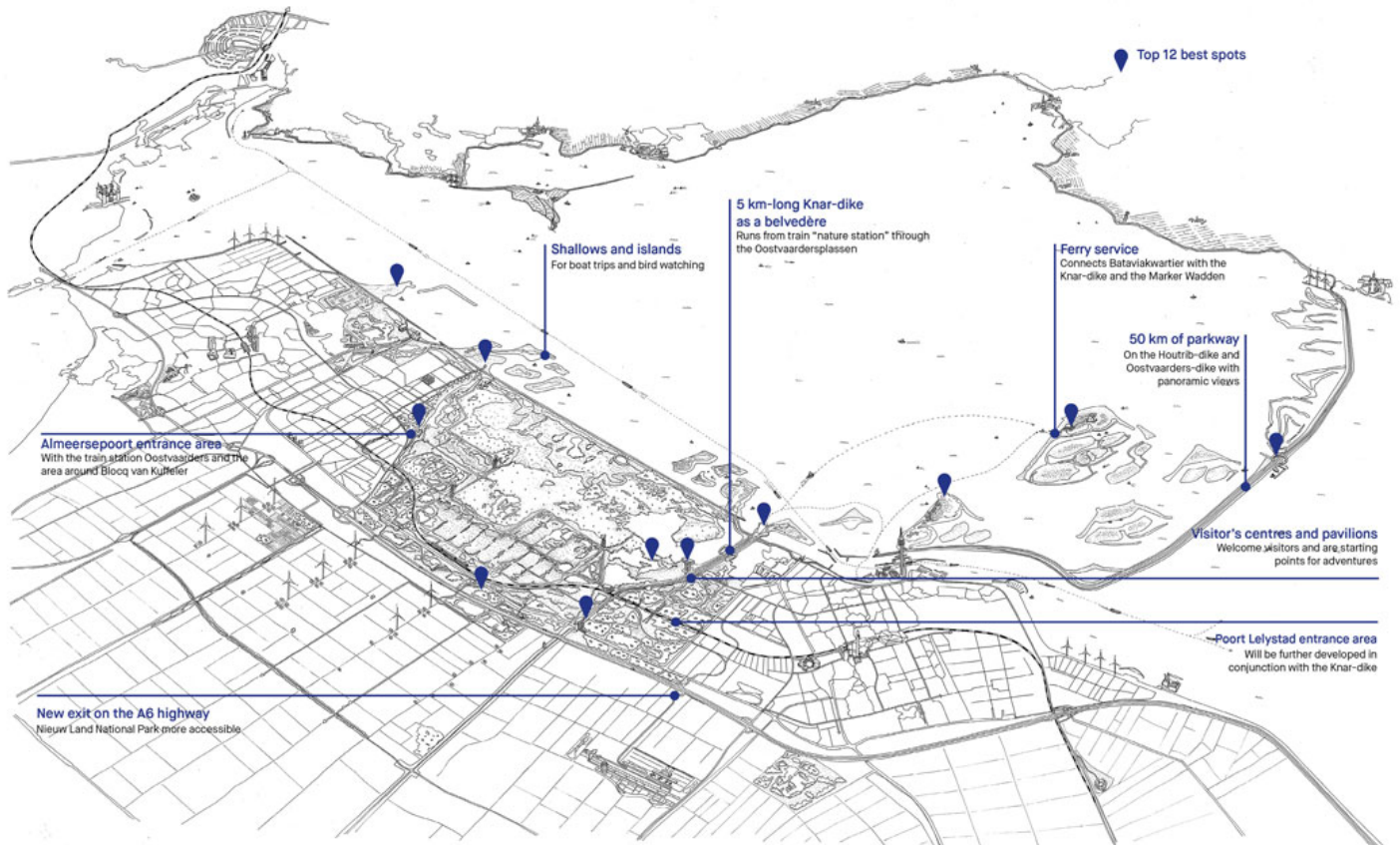
Accessible and Adventurous

Over the next 20 years, the four nature reserves will be connected gradually to form a continuous park. At the same time, Nieuw Land will be made more accessible so that visitors will be able to discover the area by bike, canoe, on foot or with an electric Jeep. The existing rest areas along the kilometre-long dikes – the Oostvaardersdijk along the Markermeer, the Houtribdijk which cuts straight through the lake, and the Knardijk – will become the belvederes of Nieuw Land. In this internationally significant bird paradise, visitors will be able to spot numerous bird species and enjoy spectacular views. With the proposed Nieuw Land “nature station” (train station), the park will be easily accessible by train from the Amsterdam metropolitan region and other urban areas.

urbanNext Lexicon

Nieuw Land National Park: An Attractive and Educational
Experience

<https://urbannext.net/nieuw-land-national-park/>



ISSN : 2575-5374

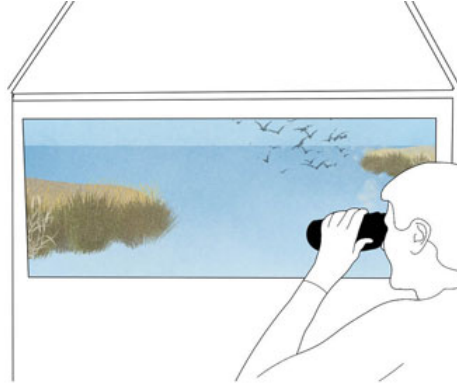
urbanNext Lexicon

Nieuw Land National Park: An Attractive and Educational
Experience

<https://urbannext.net/nieuw-land-national-park/>



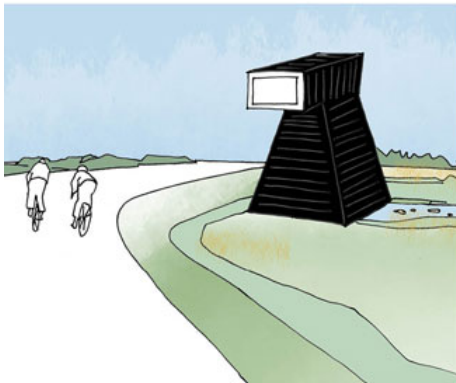
Shallows and islands



Top 12 best spots



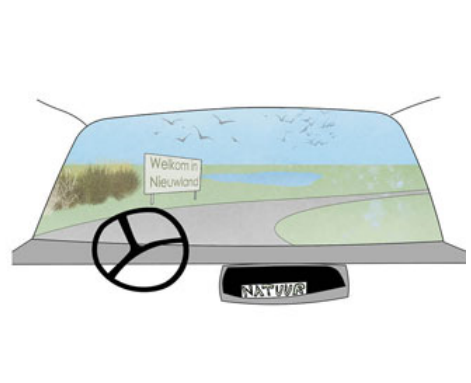
Network of pavilions



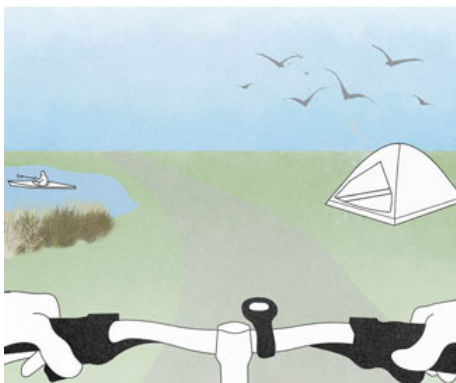
5 km Knar-dike with belvédères



50 km of parkway



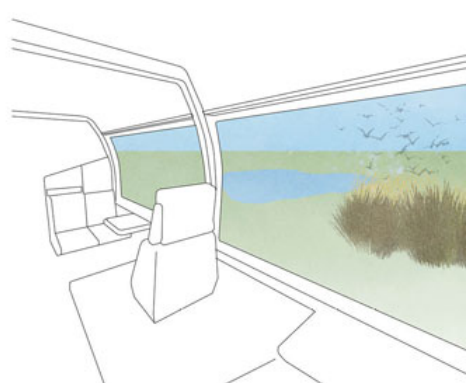
A6 highway: a room with a view



Ten special experiences



Renewable energy



Nieuw Land train "nature station"

ISSN : 2575-5374

urbanNext Lexicon

Nieuw Land National Park: An Attractive and Educational
Experience

<https://urbannext.net/nieuw-land-national-park/>

ISSN : 2575-5374

urbanNext Lexicon

Nieuw Land National Park: An Attractive and Educational
Experience

<https://urbannext.net/nieuw-land-national-park/>

ISSN : 2575-5374