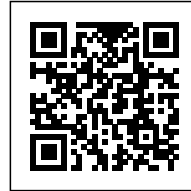




MUKU NURSERY: 360-DEGREE VISIBILITY DESIGN

Posted on May 9, 2022 by martabuges



Categories: [Contributors](#), [Densities](#), [Designing Matter](#), [Formats](#), [Low Density](#), [Project](#), [Technology and fabrication](#), [Tezuka architects](#), [Topics](#)

Tags: [Children](#), [City views](#), [Design](#), [Design strategies](#), [Educational Program](#), [Flexibility](#), [Fuji](#), [Geometry](#), [Horizontal experience](#), [Japan](#), [Movement](#), [open](#), [Project](#), [Timber](#), [Timber Structure](#), [User's experience](#), [Well-being](#), [Wood](#)



The idea behind this project should be called bubbles, rather than a circular plan. In plan, the design looks like bubbles slowly rising into the air, keeping an optimum distance from one another. Each bubble has only one function. There are no walls inside. Like a single-cell organism supported by organelles, mitochondria, ribosomes, etc., each bubble is supported by furniture and low partitions.





There are always criticisms about a circular plan: it isn't easy to arrange the furniture; the structure is complicated. I have no objection to those points, yet we found that there are significant advantages to circular planning compared to conventional modular planning.



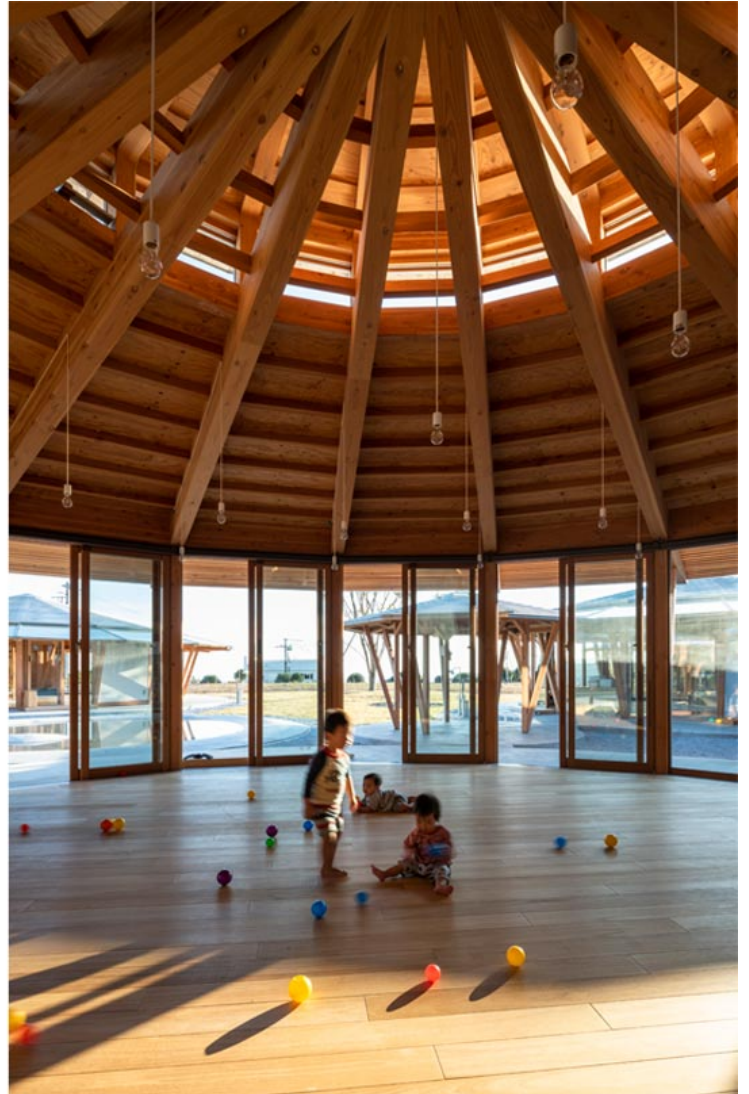
First of all, the positioning of each function is completely free from geometrical restrictions. Each room can be located as it is analyzed in the diagram. The size of each room can be adjusted freely.



Second, the visibility is excellent. Visibility is one of the most important requirements for a kindergarten and nursery school. The round shape brings 360-degree visibility naturally. The gap formed between bubbles provides glimpses from one end to the other. The view from the office is much like the view from the bridge of a ship.



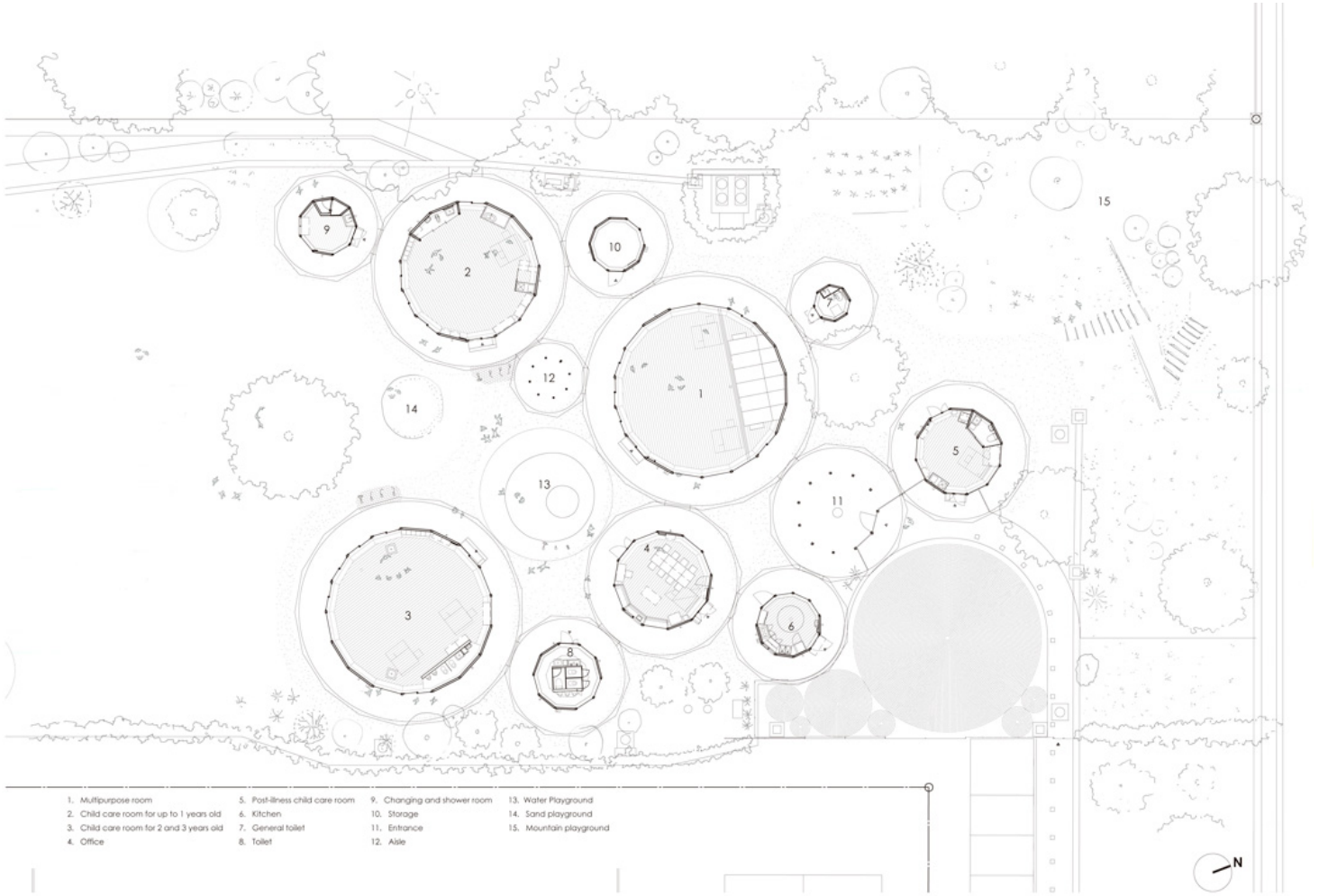
Third, the round shape evokes the endless circular movement of children. It is endless instinctive movement.





The circles are linked with each other and create infinite combinations.

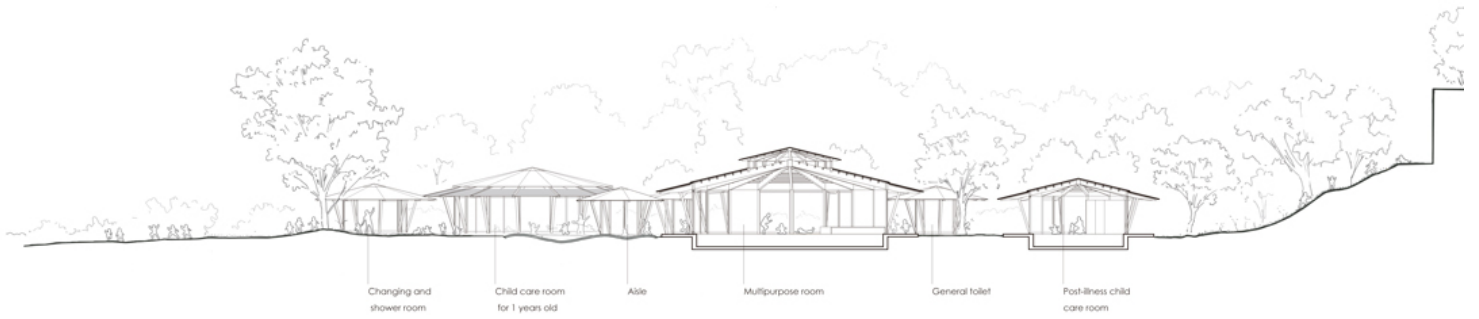
There is only one circle that the children can cross. It is an exterior dish of water at ground level. There is no step but only a gentle slope, and the depth is just 30 centimeters. In the winter, the water is drained and the pool becomes an empty dish where children can run.



- | | | | |
|--|---------------------------------|-----------------------------|-------------------------|
| 1. Multipurpose room | 5. Post-illness child care room | 9. Changing and shower room | 13. Water Playground |
| 2. Child care room for up to 1 years old | 6. Kitchen | 10. Storage | 14. Sand playground |
| 3. Child care room for 2 and 3 years old | 7. General toilet | 11. Entrance | 15. Mountain playground |
| 4. Office | 8. Toilet | 12. Aisle | |



1F Plan S=1/200



Section S=1/200

