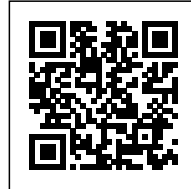




KRONA

Posted on October 1, 2016 by urbanNext



Categories: [Mecanoo](#), [Middle Density](#), [Project](#), [Technology and fabrication](#)

Tags: [Brushed Concrete](#), [City views](#), [Cultural enrichment](#), [Culture](#), [Educational Building](#), [Facilities](#), [Glass](#), [Kongsberg](#), [Mixed use](#), [Multifunctional building](#), [Norway](#), [Project](#), [Technological Approach](#), [Urban conditions](#)

urbanNext Lexicon

KRONA

<https://urbannext.net/krona/>

KRONA Knowledge and Cultural Center, Kongsberg, Norway.



ISSN : 2575-5374



Synergy

The KRONA Knowledge and Cultural Center enhances Kongsberg's cultural institutions and stimulates interaction between diverse communities and disciplines. Comprised of a variety of functions, KRONA houses new teaching and technical laboratory facilities for Buskerud University College and Tinius Olsen Technical Vocational College, as well as a technical university library. The complex also includes a public library, cinemas, municipal offices and a theatre auditorium. Its

functions are organized around a central void with shared functions, enhancing flexibility and reducing program redundancy. Using subtle landscape elevations and strategically locating program access points, visitors intuitively gravitate toward the Center. Throughout the interior spaces, strong visual connections to public functions further enhance the liveliness of the complex.

Context

Located in one of Kongsberg's most recognized locations, alongside the oldest university building in Norway, Mecanoo's design is sensitive to its historic context. It is shaped by the site conditions and opportunities. In addition to prefabricated elements and the use of ground source energy, the facility uses locally sourced materials. A façade of rough slats references local architecture and contrasts with the interior of wood, concrete and subtle silver accents that reflect daylight. Facing the park, the building has a balcony for outdoor performances as well as an amphitheatre formed in the Hasebergterndalen park landscape below. The public and university libraries, located in the heart of the complex, appear to be cut from the building volume and continue the public space of the church square. The stone floor of the surrounding courtyards is drawn into the interior, enhancing the material continuity of the public realm.

urbanNext Lexicon

KRONA

<https://urbannext.net/krona/>



ISSN : 2575-5374

urbanNext Lexicon

KRONA

<https://urbannext.net/krona/>



ISSN : 2575-5374

urbanNext Lexicon

KRONA

<https://urbannext.net/krona/>



ISSN : 2575-5374

urbanNext Lexicon

KRONA

<https://urbannext.net/krona/>



ISSN : 2575-5374

urbanNext Lexicon

KRONA

<https://urbannext.net/krona/>



ISSN : 2575-5374

urbanNext Lexicon

KRONA

<https://urbannext.net/krona/>

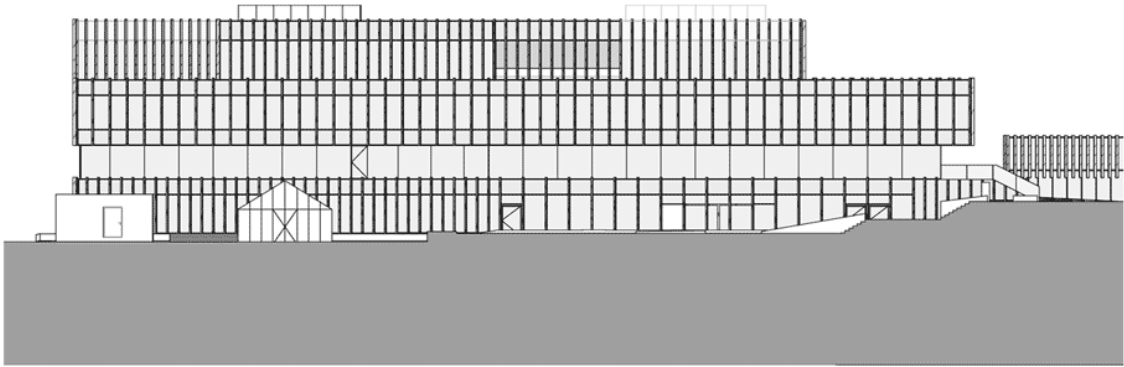


Site Plan

ISSN : 2575-5374

urbanNext Lexicon

KRONA
<https://urbannext.net/krona/>



East



Elevations

ISSN : 2575-5374

urbanNext Lexicon

KRONA

<https://urbannext.net/krona/>

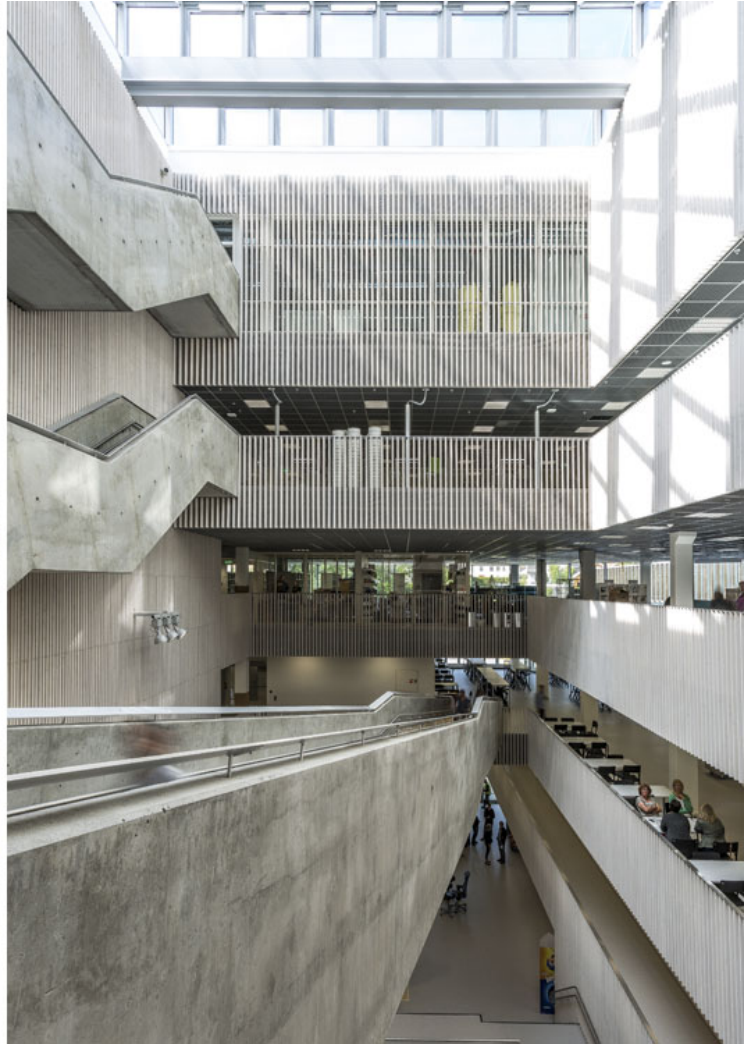


ISSN : 2575-5374

urbanNext Lexicon

KRONA

<https://urbannext.net/krona/>



ISSN : 2575-5374



Flexible

The KRONA Knowledge and Cultural Center is highly flexible: in the evening the university canteen transforms into a café, the public library serves as a theatre foyer, and the art gallery transforms into a bar for the film center. The very concept of the building is adaptable in its components and form. Central to the shared program are a number of large assembly rooms that accommodate a range of events including lectures, meetings, performances, receptions and concerts. The auditoria in the

urbanNext Lexicon

KRONA

<https://urbannext.net/krona/>

heart of the building are equipped for a variety of different configurations. These entertainment spaces are designed to be as open and flexible as possible, yet also create a vibrant, social atmosphere and a connection to Kongsberg's historical context.



ISSN : 2575-5374

urbanNext Lexicon

KRONA

<https://urbannext.net/krona/>



ISSN : 2575-5374

urbanNext Lexicon

KRONA

<https://urbannext.net/krona/>



ISSN : 2575-5374

urbanNext Lexicon

KRONA

<https://urbannext.net/krona/>

ISSN : 2575-5374