



KINDERGARDEN SCHUKOWITZGASSE

Posted on February 24, 2016 by Urban UrbanNext



Categories: [Energy and sustainability](#), [kirsch ZT gmbh](#), [Middle Density](#), [Project](#)

Tags: [Austria](#), [Building](#), [Eco Building](#), [Efficiency](#), [Efficiency measures](#), [Energetic Approach](#), [Facilities](#), [Modular housing](#), [Passive house standards](#), [Prefab housing](#), [Prefabrication](#), [Project](#), [School](#), [Vienna](#)

urbanNext Lexicon

Kindergarden Schukowitzgasse

<https://urbannext.net/kindergarden-schukowitzgasse/>

Situated in a heterogenous suburban surrounding the 2 storey structure expresses a distinct identity harmonizing with its neighboring buildings.



Complex simplicity – simple complexity

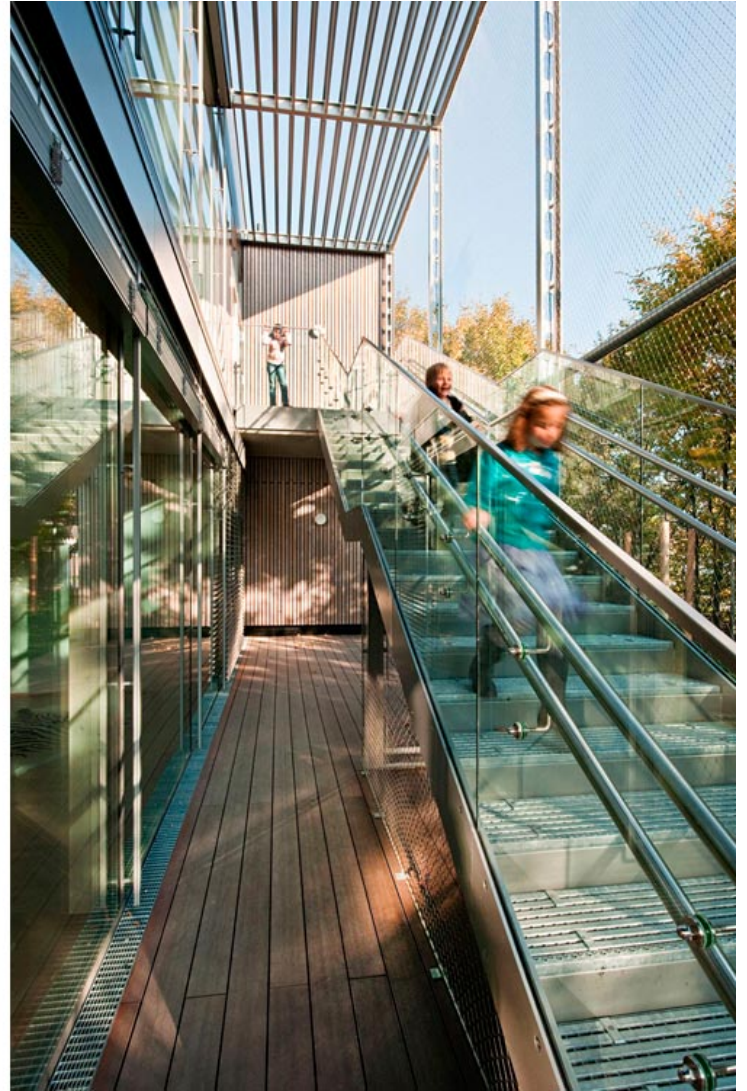
The concept of a spatial open square core is enlarged by a “filter” layer comprising boxlike secondary rooms, external stairs, sun protected playgrounds and a “green” façade. This intermediate layer works as a “verandah” zone mediating between the inside and the outside, allowing manifold

ISSN : 2575-5374

urbanNext Lexicon

Kindergarden Schukowitzgasse
<https://urbannext.net/kindergarden-schukowitzgasse/>

outlooks and insights. Inside perspectives enable the user at any point to orientate him/herself within the building.



Functional openness – spatial intimacy

The entrance, administration / therapy, the bistro and 2 group rooms for infants are situated on the ground floor. On the first floor, there is a floating space for 4 groups according to the occupant's

ISSN : 2575-5374

concept of an “open mode” . One of the groups is separated by glass walls to serve as a relaxation room. The servicing rooms (i.e sanitary boxes, storage and play niches) are placed at the façade as annexes to the main space.

urbanNext Lexicon

Kindergarden Schukowitzgasse
<https://urbannext.net/kindergarden-schukowitzgasse/>



ISSN : 2575-5374

urbanNext Lexicon

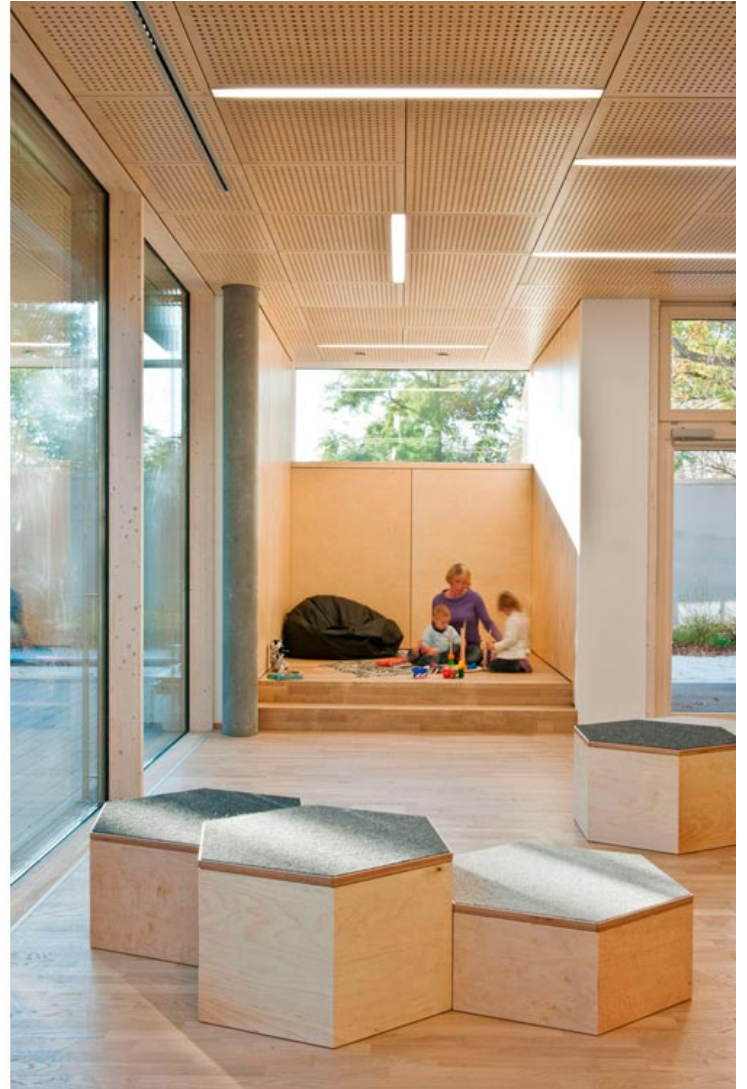
Kindergarden Schukowitzgasse
<https://urbannext.net/kindergarden-schukowitzgasse/>



ISSN : 2575-5374

urbanNext Lexicon

Kindergarden Schukowitzgasse
<https://urbannext.net/kindergarden-schukowitzgasse/>



Construction

To stick to the prefixed schedule for completion, the choice fell on a mixed system of prefabrication between in situ concrete and prefabricated cross laminated timber:

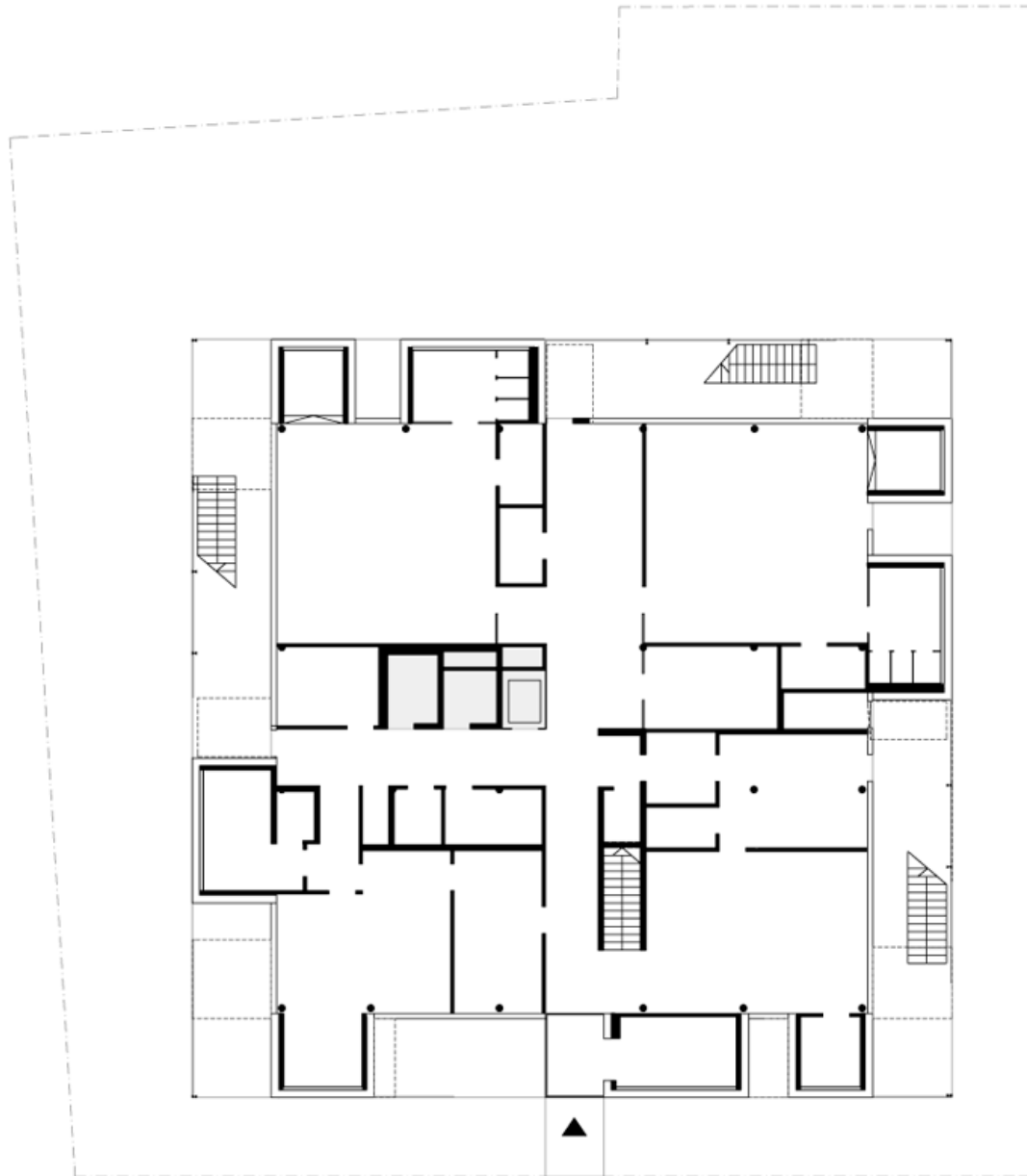
The ground slab and the slab between ground and upper floor of the square core (22 / 22m) is made of in situ concrete combined with columns of spun concrete. The roof is made of cross laminated

ISSN : 2575-5374

timber (BBS), as well as the prefabricated boxes. A rectangular core of reinforced concrete and the slab next to the central staircase are used for the lateral reinforcement of the building.

urbanNext Lexicon

Kindergarden Schukowitzgasse
<https://urbannext.net/kindergarden-schukowitzgasse/>



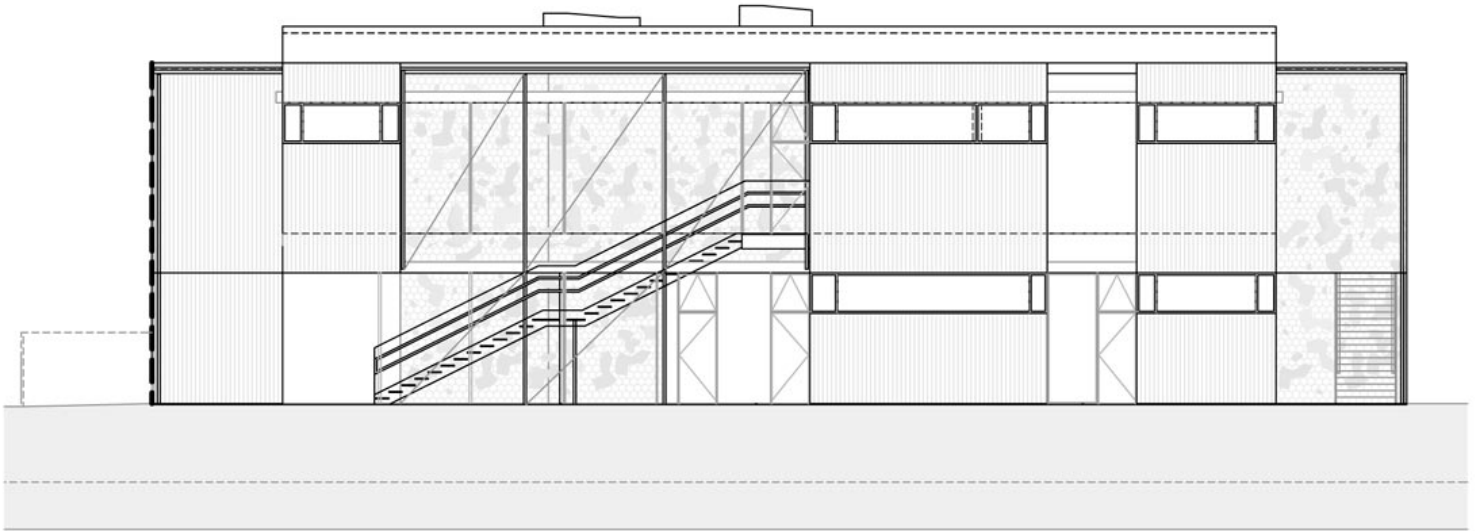
ground floor

ISSN : 2575-5374

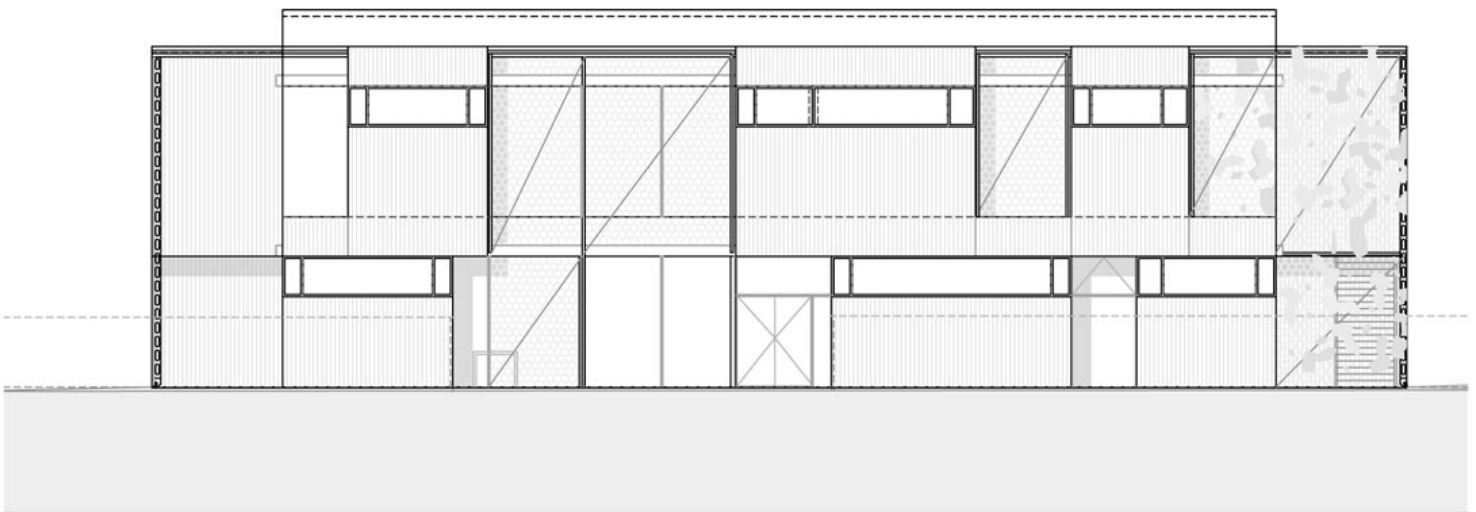
Plans

urbanNext Lexicon

Kindergarden Schukowitzgasse
<https://urbannext.net/kindergarden-schukowitzgasse/>



north view



east view

ISSN : 2575-5374

Elevations

HVACR

The kindergarden fulfills the requirements of a passive house standard. The heating and cooling system is based on a air / water heating pump situated on the flat roof.



