



HOPE ON WATER: FLOATING EMERGENCY HOUSE

Posted on February 19, 2020 by martabuges



Categories: [expanding design practices](#), [No Density](#), [Politics and economics](#), [Project](#), [SO?](#), [Territory and mobility](#)

Tags: [Design strategies](#), [Earthquake](#), [Emergency architecture](#), [Emergency Housing](#), [Ephemeral](#), [Functional unit](#), [Installation](#), [Istanbul](#), [Project](#), [Prototype](#), [Structure](#), [Temporary housing](#), [Turkey](#), [Watery Territory](#)

urbanNext Lexicon

Hope on Water: Floating Emergency House
<https://urbannext.net/hope-on-water/>

Designated emergency assembly points in the case of an earthquake in Istanbul were announced in 2001. Since then, most of these public spaces have been built up, which raises the question of where everyone will be housed in the case of an emergency.

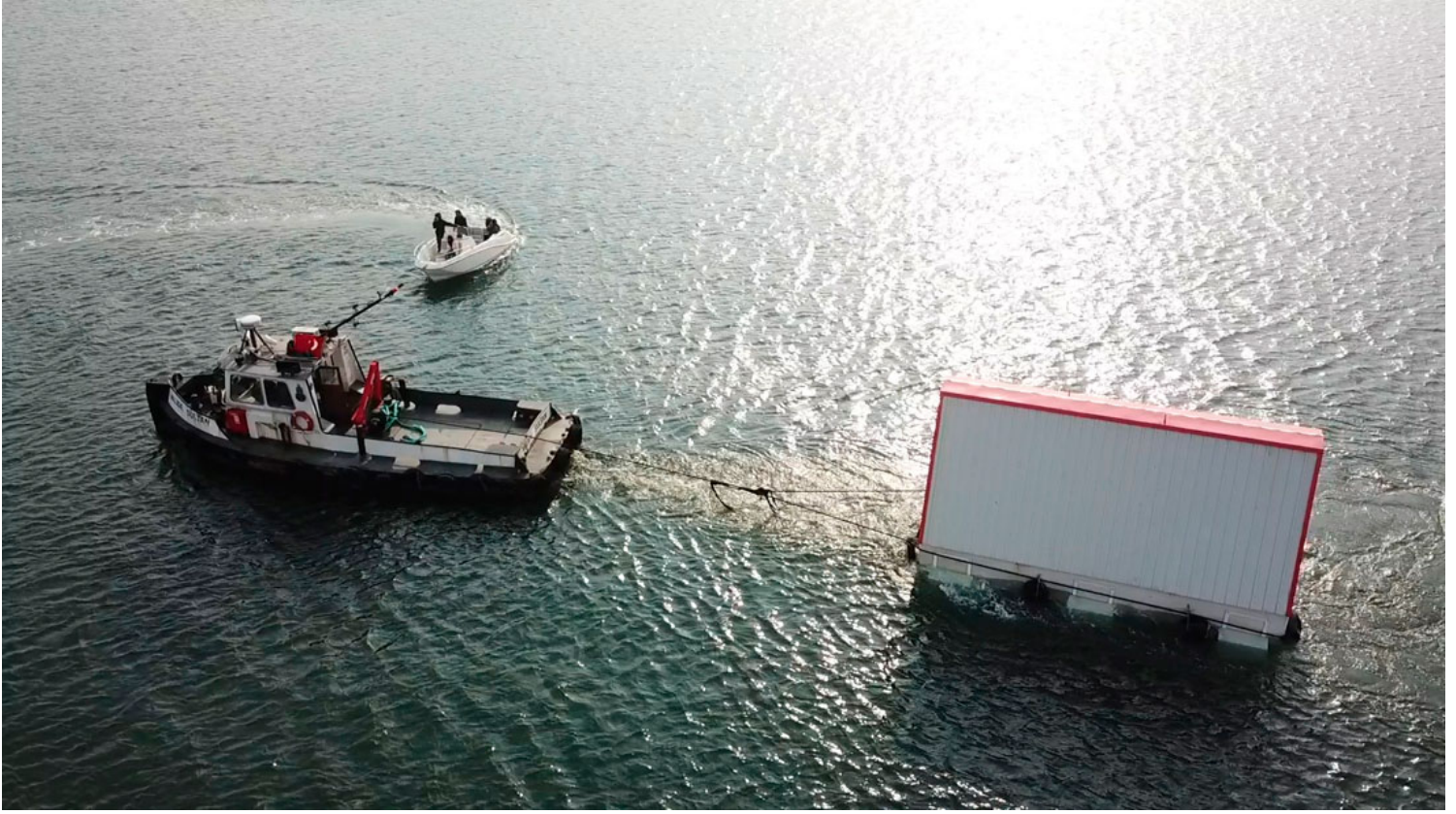


ISSN : 2575-5374

urbanNext Lexicon

Hope on Water: Floating Emergency House

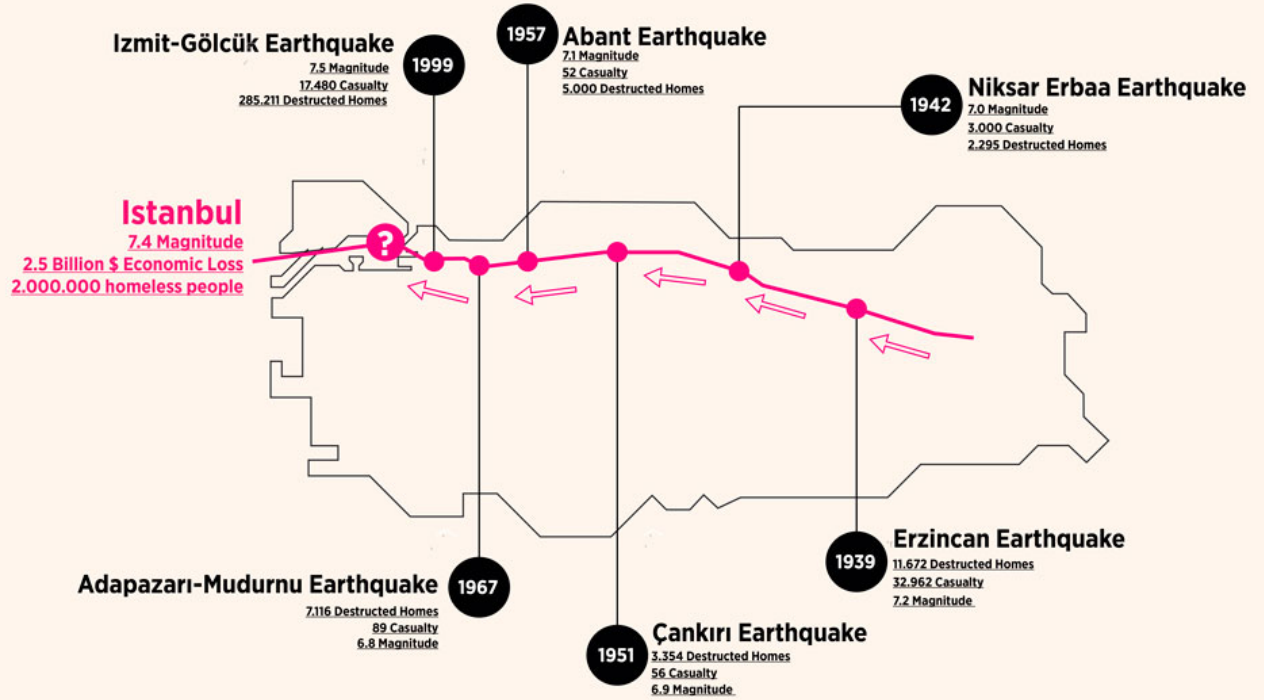
<https://urbannext.net/hope-on-water/>



The idea of designing a speculative prototype for a floating emergency house came out of this fact: what if the response is not about stable land, but manageable water? Fold&Float is now floating on the Golden Horn, the area that will not be impacted by an earthquake's tsunami. The prototype can be seen floating at the Earth School satellite at Rahmi M. Koç Museum.

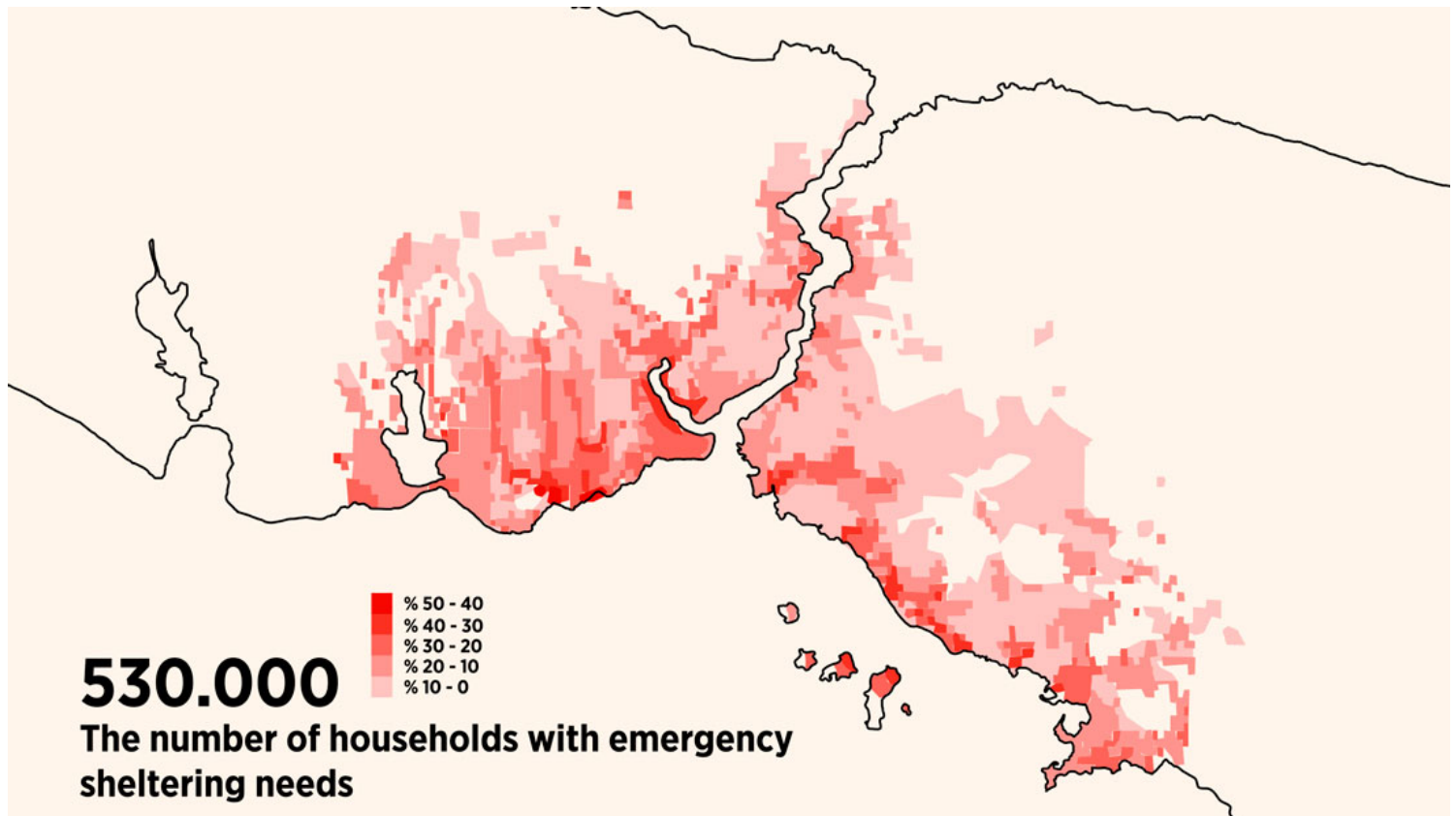
ISSN : 2575-5374

NORTH ANATOLIAN FAULT



urbanNext Lexicon

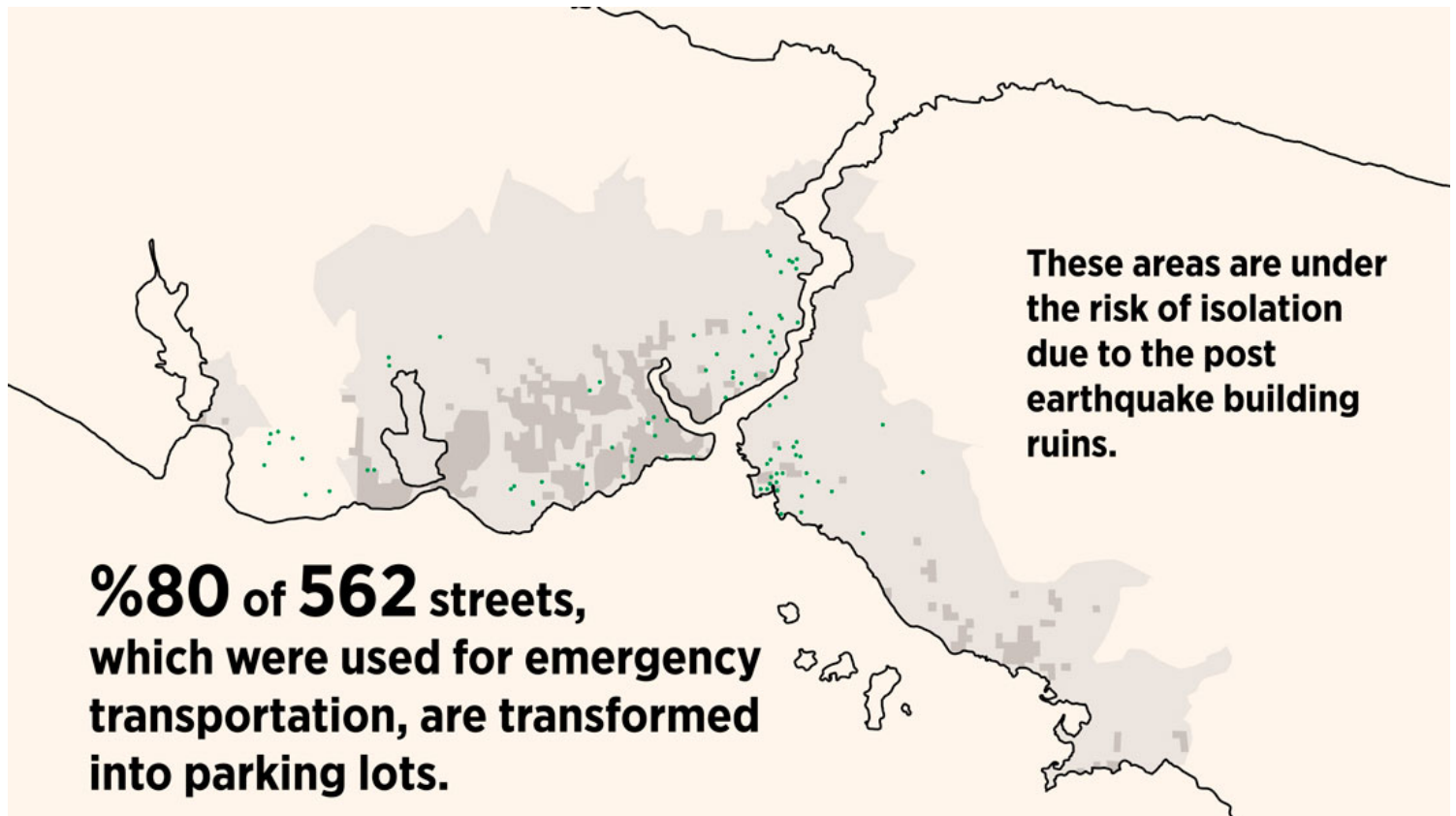
Hope on Water: Floating Emergency House
<https://urbannext.net/hope-on-water/>



ISSN : 2575-5374

urbanNext Lexicon

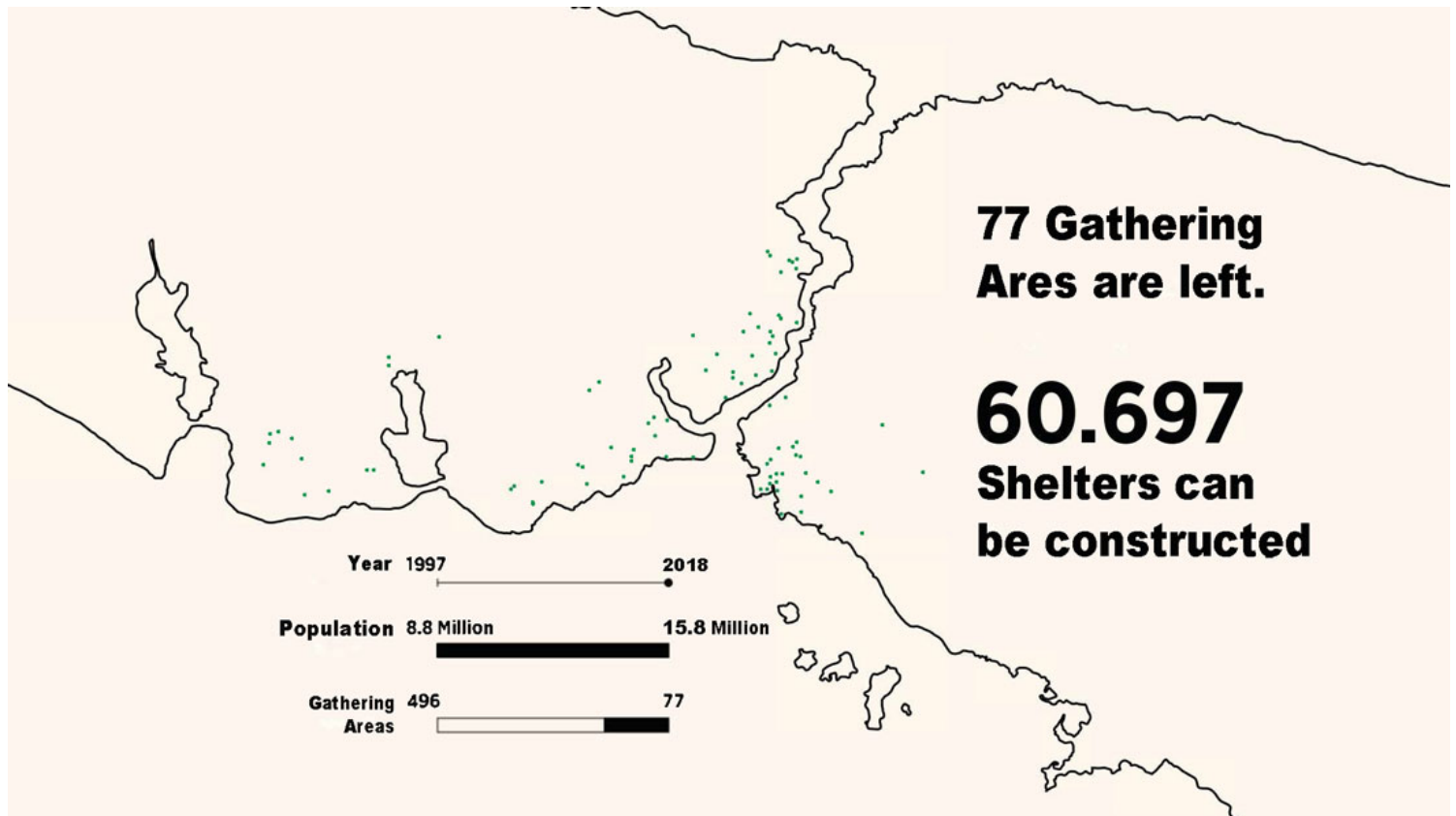
Hope on Water: Floating Emergency House
<https://urbannext.net/hope-on-water/>



ISSN : 2575-5374

urbanNext Lexicon

Hope on Water: Floating Emergency House
<https://urbannext.net/hope-on-water/>



ISSN : 2575-5374



Fold&Float is a foldable structure made of light steel construction, specially developed for emergency situations. Its light and foldable structure provides rapid and easy installation in the case of an emergency.



The unit is composed of two main parts: the upper structure that includes all the fixed furniture folded and implemented, and a floating pontoon made of concrete. The idea of a foldable unit

which comes fully equipped is the result of research displaying that earthquake victims generally spend at least one year in temporary housing after the disaster.



