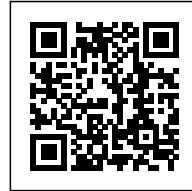




## GREENRIDGES: A SLICE OF NATURE

*Posted on April 16, 2020 by martabuges*



---

**Categories:** [g8a architects](#), [High Density](#), [Project](#), [Territory and mobility](#), [Urban Paradigms](#)

**Tags:** [Alternative Domesticity](#), [Architecture&nature](#), [Comfort](#), [Connections](#), [Efficiency](#), [Environment](#), [Greenery](#), [Housing](#), [Identity](#), [Project](#), [Singapore](#), [Sustainability](#), [Urban fabric](#)

# urbanNext Lexicon

GreenRidges: A Slice of Nature  
<https://urbannext.net/greenridges/>

Located in the northeast of Singapore, "GreenRidges" is conceived as a slice of nature nestled within the urban fabric of Singapore. Part of the "Leaf within Our City in a Garden" of Tampines Town, the project covers an approximate site area of 70,000 m<sup>2</sup>. The design concept for this 2,000-unit public housing development was inspired by the Asia stone forest, giving the project a unique identity.



One of the key features of the design is the network of greenery and social spaces linking the upper Environmental Deck and the Green Canyon area at ground level.

ISSN : 2575-5374

# urbanNext Lexicon

GreenRidges: A Slice of Nature  
<https://urbannext.net/greenridges/>



The Green Canyon is part of the green tapestry connecting residents in the precinct to the future boulevard park. It is a lush green and well-shaded linear space running the length of the housing development. Residents can use rest shelters and shady spaces for their daily exercise routine in the green canyon.

ISSN : 2575-5374



# urbanNext Lexicon

GreenRidges: A Slice of Nature  
<https://urbannext.net/greenridges/>



ISSN : 2575-5374



# urbanNext Lexicon

GreenRidges: A Slice of Nature  
<https://urbannext.net/greenridges/>



Elevated gardens on the precinct's two-story car parks will be linked by bridges to provide seamless connectivity to existing and future developments to the north and south of the precinct. This elevated connecting level is pedestrian friendly and features lush greenery and community gardening spaces. Designed together with the housing precinct, the entrance park along Tampines Avenue 9 provides a lush welcoming entry for residents coming home. A variety of amenities such as an eating house, shops, and a small supermarket are provided for residents' daily convenience.

ISSN : 2575-5374

# urbanNext Lexicon

GreenRidges: A Slice of Nature  
<https://urbannext.net/greenridges/>



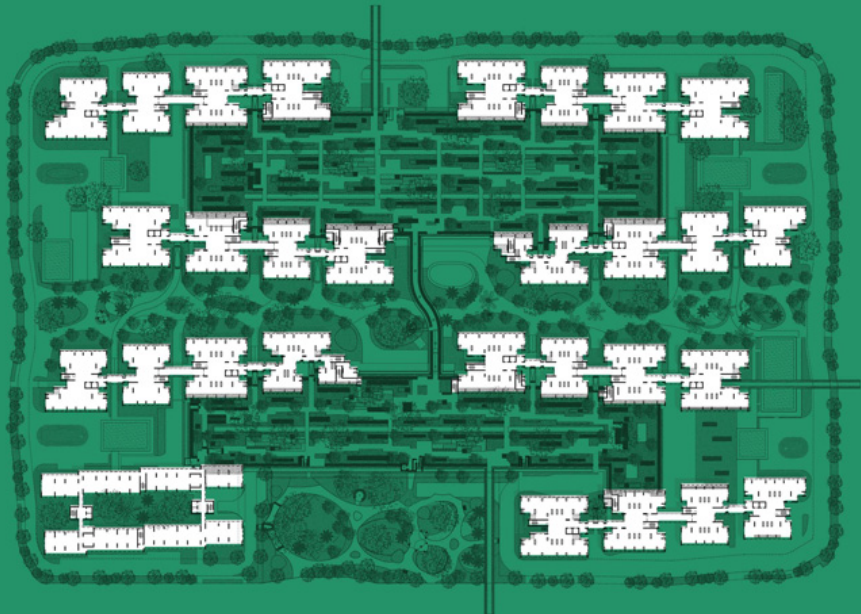
Sustainability is a primary focus of the building's design with the goal of following the green mark principles, particularly in terms of energy efficiency, water efficiency, environmental protection, indoor environmental quality and green features. The underlying principle of the environmentally sustainable design (ESD) features is passive design. The "back to basics" approach is favored over technically complex solutions as it concurrently minimizes maintenance costs and maximizes the system life span.

ISSN : 2575-5374



# urbanNext Lexicon

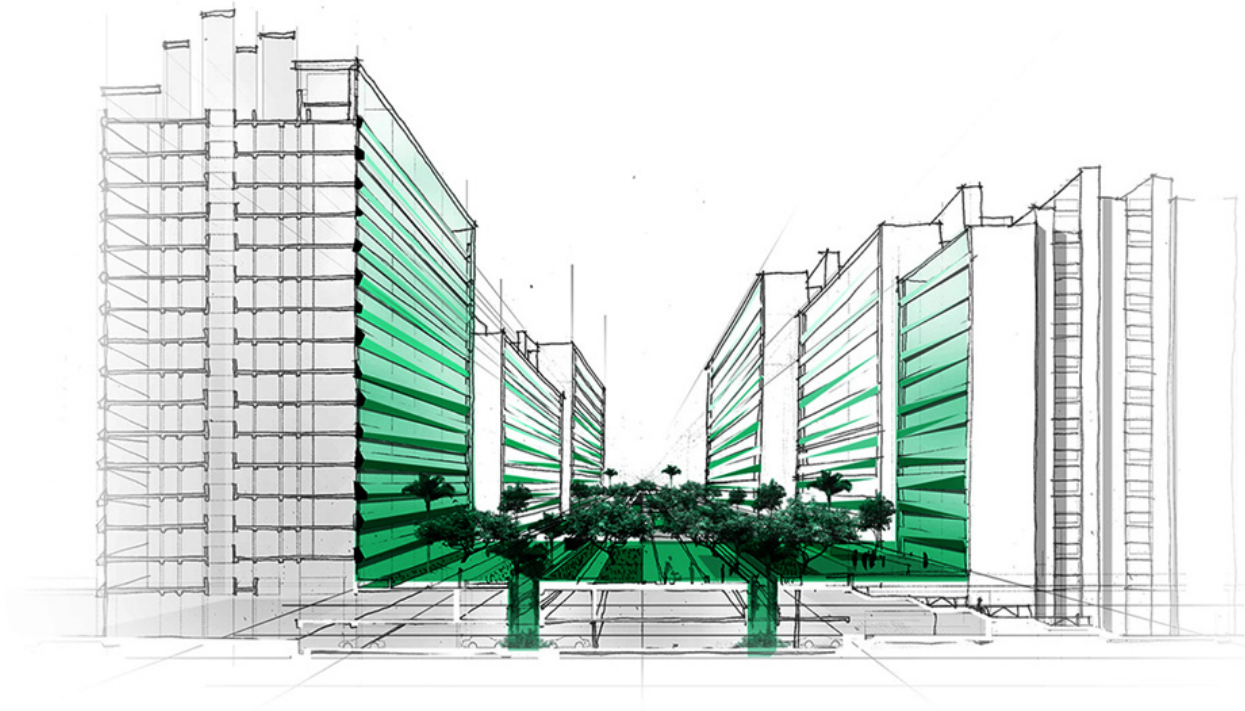
GreenRidges: A Slice of Nature  
<https://urbannext.net/greenridges/>



ISSN : 2575-5374

# urbanNext Lexicon

GreenRidges: A Slice of Nature  
<https://urbannext.net/greenridges/>



ISSN : 2575-5374



# urbanNext Lexicon

GreenRidges: A Slice of Nature  
<https://urbannext.net/greenridges/>

ISSN : 2575-5374