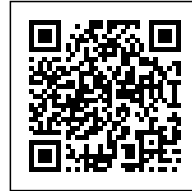




# DANISH NATIONAL MARITIME MUSEUM

*Posted on July 26, 2016 by urbanNext*



---

**Categories:** [BIG-BJARKE INGELS GROUP](#), [Bjarke Ingels](#), [Middle Density](#), [Project](#), [Technology and fabrication](#), [Territory and mobility](#)

**Tags:** [Architecture&nature](#), [Background](#), [City views](#), [Concrete](#), [Cultural enrichment](#), [Culture](#), [Denmark](#), [Facilities](#), [Glass](#), [Glass panels](#), [Helsingør](#), [Museology](#), [Museum](#), [Natural connectors](#), [Natural dialogue](#), [Natural metaphor](#), [Project](#), [Public Space](#), [Second life](#), [Technological Approach](#), [Territorial Approach](#), [Waterfront](#)



The Danish Maritime Museum is located in a unique historic and spatial context: between one of Denmark's most important and famous buildings the Kronborg Castle and the Culture Yard - a new, ambitious cultural center.















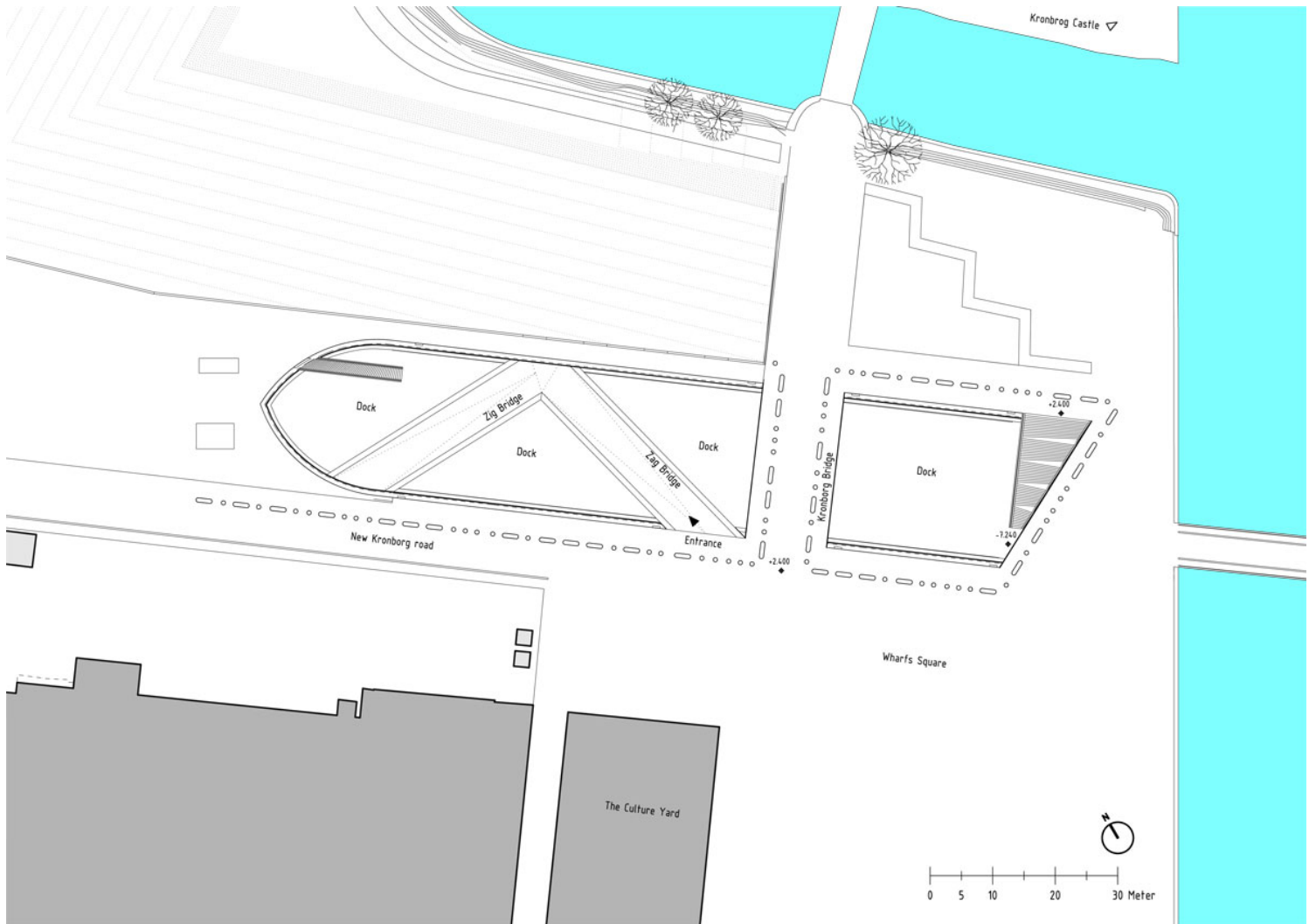
BIG proposed to place the museum underground, just outside the wall of the dock in order to preserve the dock as an open, outdoor display, maintaining the powerful structure as the center of the Maritime Museum. By placing the museum this way, it appears as part of the cultural environment associated with the Kronborg castle and the neighboring Culture Yard, while at the same time manifesting itself as an independent institution. The dock creates a museum space as a cohesive floor plan which discreetly becomes lower and lower across the entire museum length. Simple accessibility ramps and bridges are added, cutting through the dock in a structural and sculptural way.



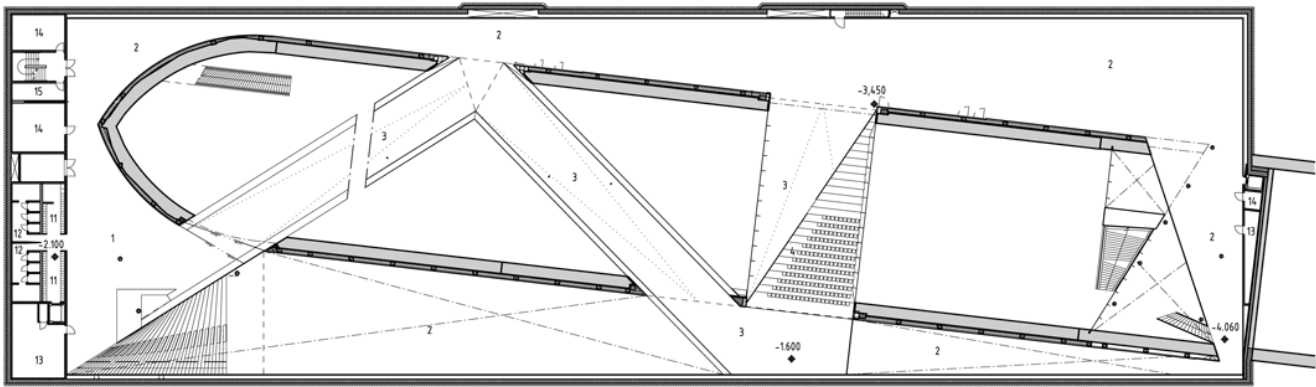


**THE MUSEUM IS PLACED IN THE OLD DRY DOCK WITHIN THE 500M UNESCO PRESERVATION LINE FROM THE CASTLE**

Diagrams

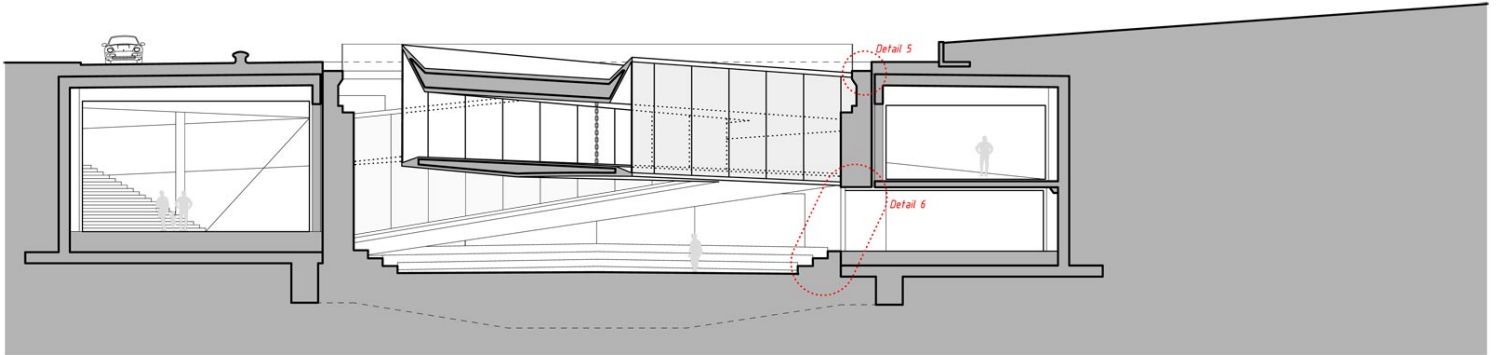


**Site Plan**



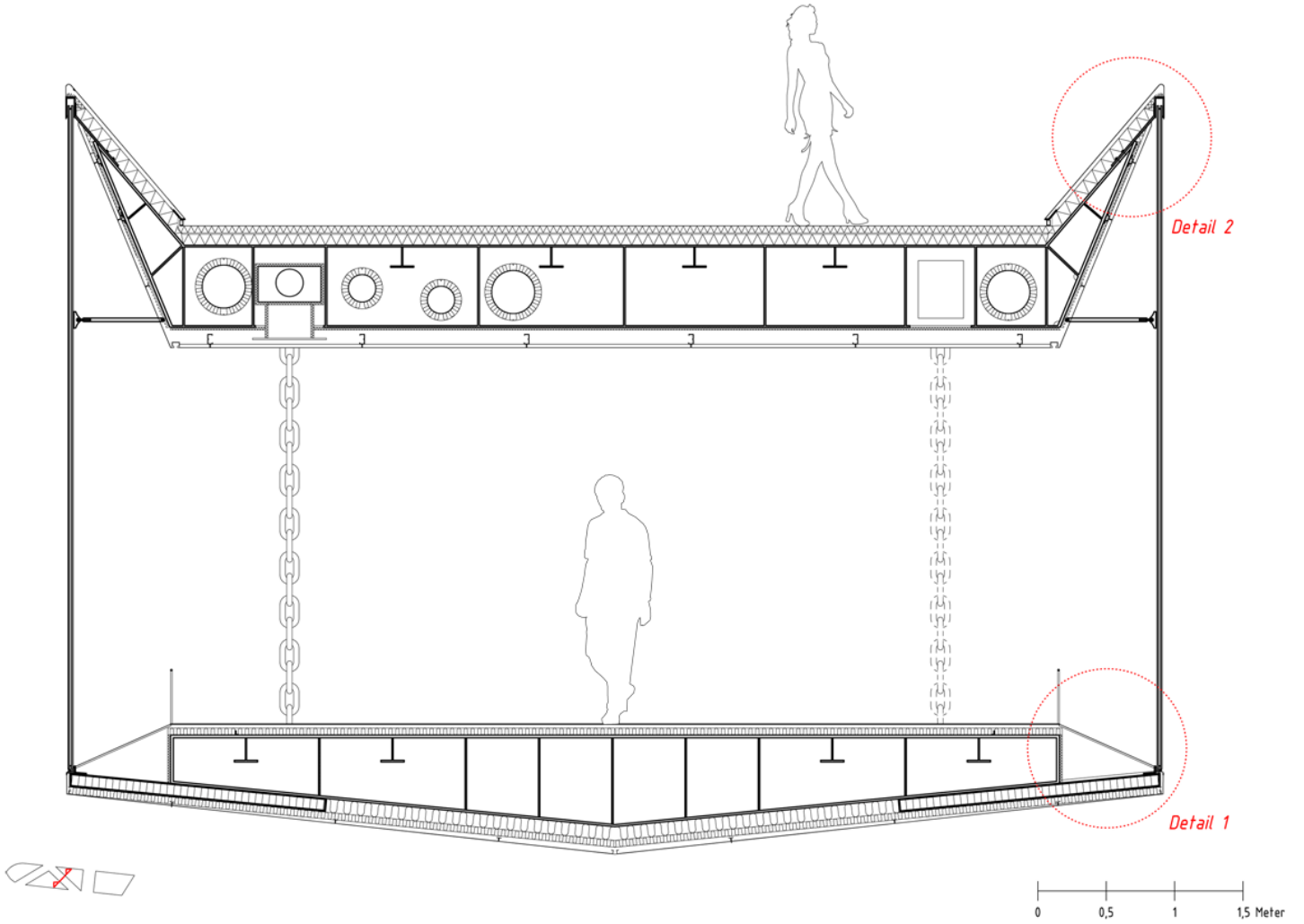
## Plans

ISSN : 2575-5374

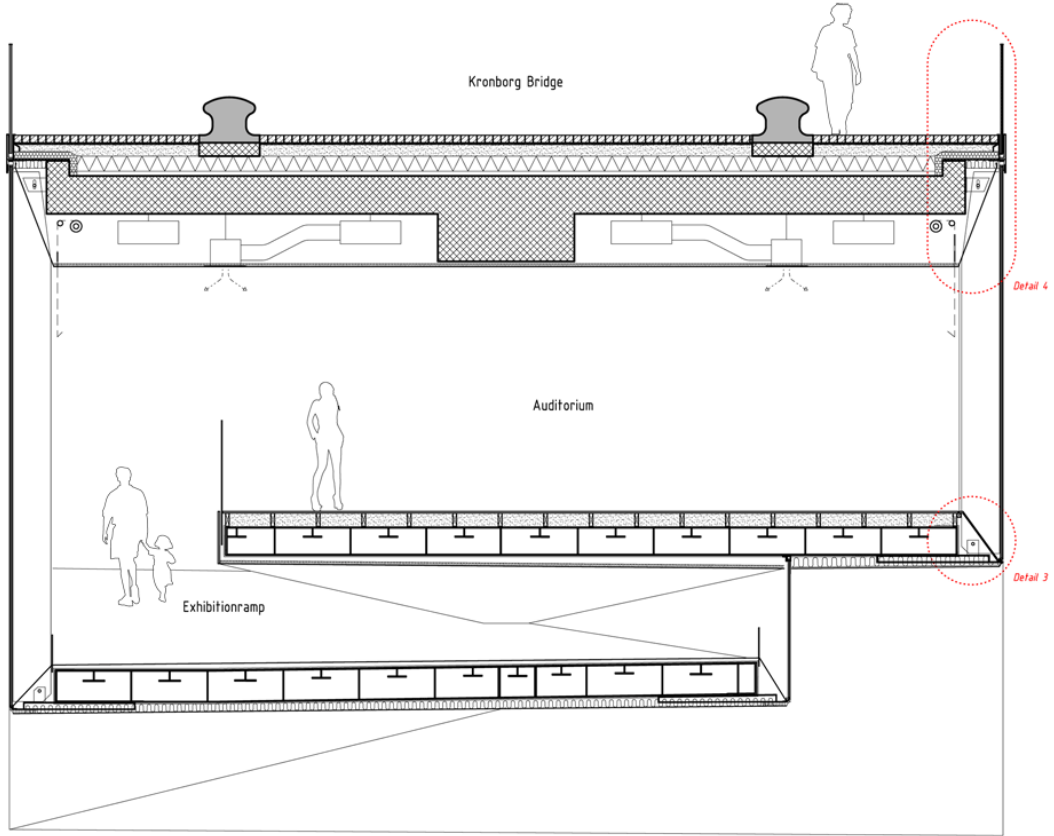


**Cross Section**









## Section Details







**Before & After Images**



