



## CERAMIC GRIDS AND URBAN QUIETUDE

*Posted on May 20, 2025 by Dima Fadel*



**Categories:** [ARQUID](#), [expanding design practices](#), [Middle Density](#), [Project](#), [Technology and fabrication](#), [xavi gonzalez](#)

**Tags:** [architectural thresholds](#), [ceramic façade](#), [garden integration](#), [geothermal energy](#), [modern domestic space](#), [Passive design](#), [residential design](#), [Spanish architecture](#), [sustainable housing](#), [terracotta](#)

Located in the northeastern district of Madrid, *Casa Umbral* is a single-family home designed by the architecture studio ARQUID. Characterized by its distinctive ceramic façade, the house offers serene and secluded living spaces, effectively shielded from the surrounding urban noise. A refined interplay of volumes and openings defines a domestic space that balances intimacy with openness and light.

The spatial organization is tailored to the family's daily rhythms. The ground floor is dedicated to daytime activities, including the kitchen, study, and living room, and opens onto a private garden through large windows. The upper floor houses the bedrooms, ensuring privacy and quiet during the night. The house is composed of four volumes: one facing Gutiérrez Canales Street that acts as a buffer, and three others that open toward the garden.

# urbanNext Lexicon

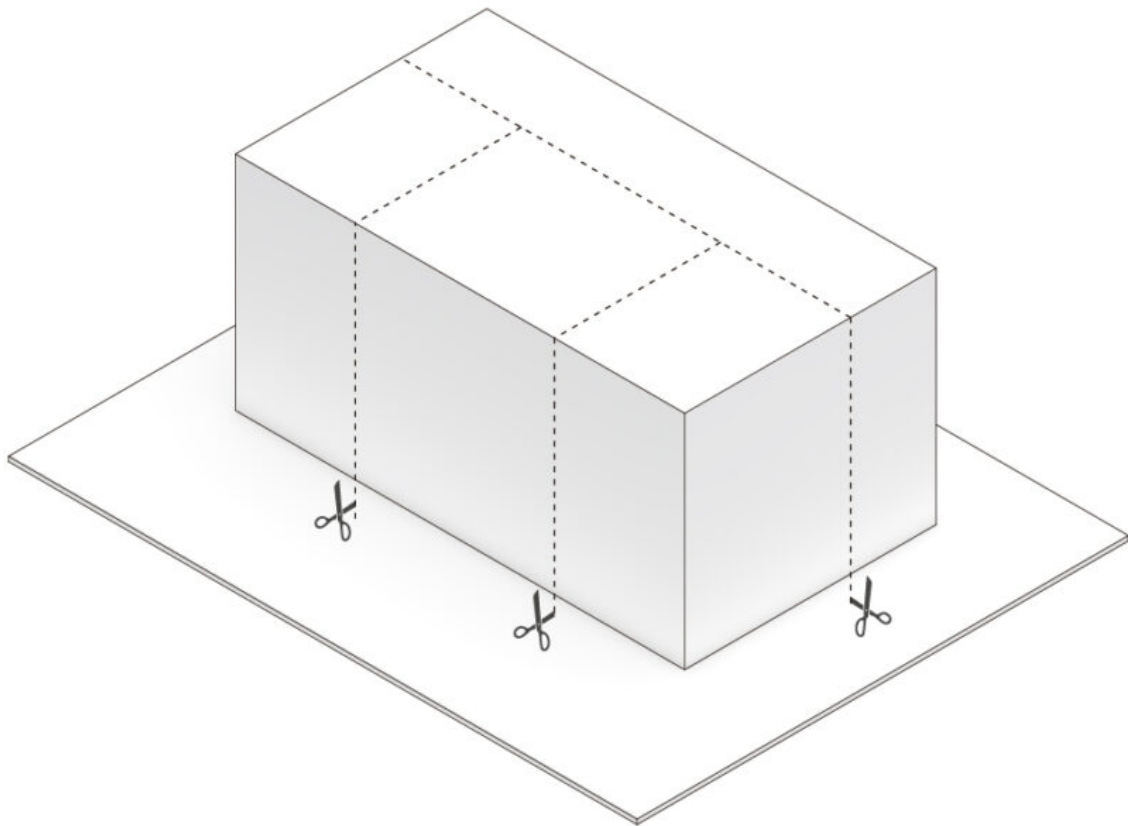
Ceramic Grids and Urban Quietude  
<https://urbannext.net/ceramic-grids-and-urban-quietude/>



ISSN : 2575-5374

# urbanNext Lexicon

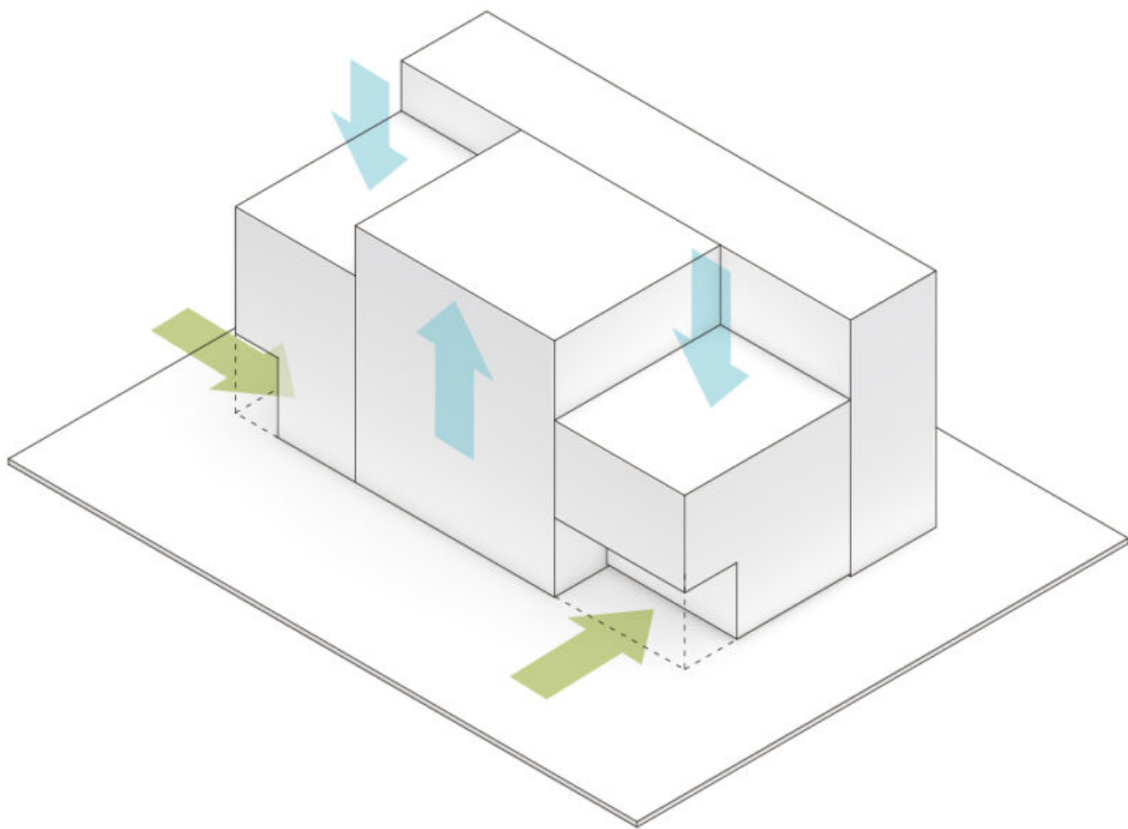
Ceramic Grids and Urban Quietude  
<https://urbannext.net/ceramic-grids-and-urban-quietude/>



ISSN : 2575-5374

# urbanNext Lexicon

Ceramic Grids and Urban Quietude  
<https://urbannext.net/ceramic-grids-and-urban-quietude/>



ISSN : 2575-5374

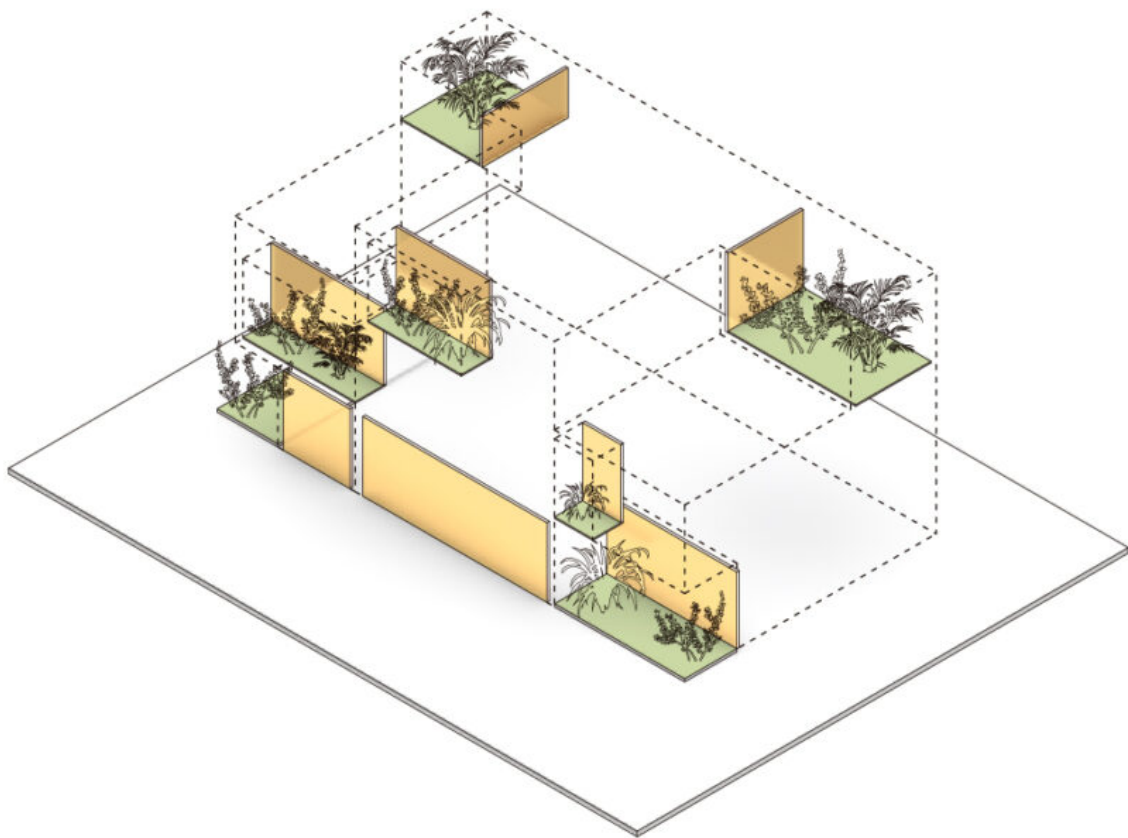
# urbanNext Lexicon

Ceramic Grids and Urban Quietude  
<https://urbannext.net/ceramic-grids-and-urban-quietude/>

ISSN : 2575-5374

# urbanNext Lexicon

Ceramic Grids and Urban Quietude  
<https://urbannext.net/ceramic-grids-and-urban-quietude/>



ISSN : 2575-5374

A blend of materials—ceramic lattice, concrete, and brick—shapes the enveloping structure, maximizing privacy while maintaining generous natural light and views. This volumetric arrangement continues indoors, where custom enclosures articulate and connect the main spaces.

The modular ceramic façade contributes to the home's visual identity. Built from simple terracotta-colored ceramic pieces, it forms a sober and elegant grid that filters light while revealing two upper-level terraces. Acting as a visual threshold, the façade brings texture and pattern to the exterior and regulates sunlight, offering both intimacy and climatic comfort. The material choice fosters a dialogue between tradition and modernity, enhancing energy efficiency through passive climate control.

# urbanNext Lexicon

Ceramic Grids and Urban Quietude  
<https://urbannext.net/ceramic-grids-and-urban-quietude/>



ISSN : 2575-5374

# urbanNext Lexicon

Ceramic Grids and Urban Quietude  
<https://urbannext.net/ceramic-grids-and-urban-quietude/>

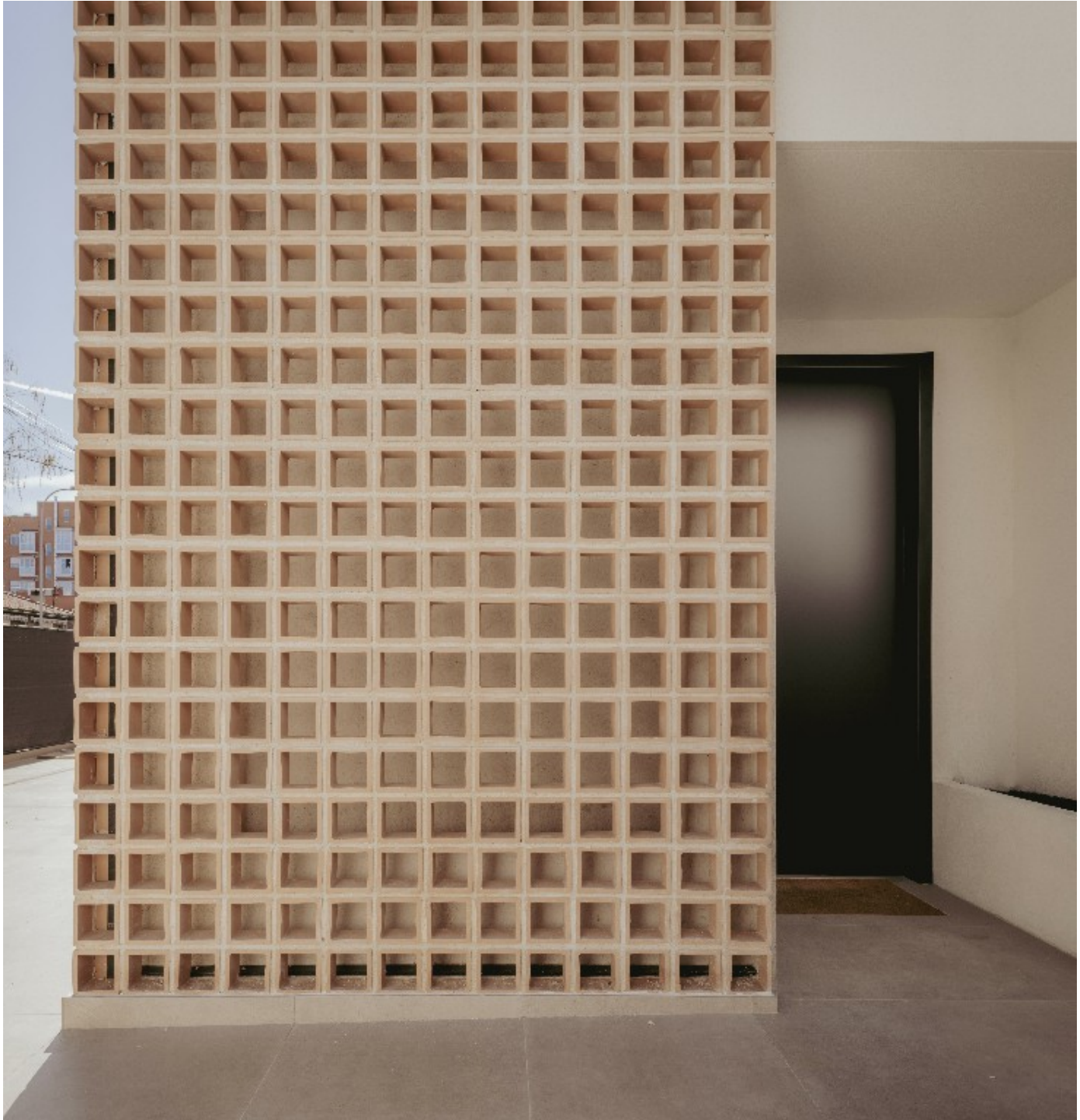


ISSN : 2575-5374

# urbanNext Lexicon

Ceramic Grids and Urban Quietude

<https://urbannext.net/ceramic-grids-and-urban-quietude/>



ISSN : 2575-5374

The outer wall is integrated into the interior layout, functioning as both a spatial divider and part of the built-in furnishings. This setup generates cozy, private areas within the home while maintaining a seamless relationship with the outside. An open, fluid interior plan links the kitchen, dining, and living areas. Large windows frame panoramic views of the garden and flood the interiors with natural light. A palette of neutral tones and natural materials—particularly smooth-finished wood used in interior joinery—imbues the home with a serene, contemporary atmosphere.

The project embraces advanced sustainable strategies. Vegetation is integrated into patios and terraces, improving air quality and fostering a healthier indoor environment. A geothermal system provides efficient heating and cooling by harnessing underground energy. Provisions have been made for future installation of photovoltaic panels, further reducing the building's energy footprint. Additionally, the garage is equipped with an electric vehicle charging station, supporting sustainable mobility. Thoughtfully organized and resolved, Casa Umbral is a residential project that explores thresholds—visual, spatial, and environmental—between the domestic realm and the urban landscape.

# urbanNext Lexicon

Ceramic Grids and Urban Quietude

<https://urbannext.net/ceramic-grids-and-urban-quietude/>



ISSN : 2575-5374

# urbanNext Lexicon

Ceramic Grids and Urban Quietude  
<https://urbannext.net/ceramic-grids-and-urban-quietude/>

ISSN : 2575-5374

# urbanNext Lexicon

Ceramic Grids and Urban Quietude  
<https://urbannext.net/ceramic-grids-and-urban-quietude/>

ISSN : 2575-5374