



AL NASEEJ TEXTILE FACTORY

Posted on October 12, 2022 by xavigonzalez



Categories: [Contributors](#), [Densities](#), [Formats](#), [Leopold Banchini Architects](#), [Middle Density](#), [Project](#), [Technology and fabrication](#), [Topics](#)

Tags: [Architecture](#), [Architecture&nature](#), [Bahrain](#), [Lightweight Materials](#), [Local materials](#), [Natural materials](#), [Performative Envelope](#), [Project](#), [Shade Shaping](#), [Timber Structure](#), [Tradition](#), [User's experience](#), [Well-being](#)

urbanNext Lexicon

Al Naseej Textile Factory
<https://urbannext.net/al-naseej-textile-factory/>

Shaded by a light Arish structure, Bahraini weavers used to dig a hole in the ground to fit their legs. By this simple action, the ground was transformed into an endless table to tense the wires needed for their delicate work. Arish is a traditional building technique using the dry leaves of the date palms and weaving them into a strong surface. Both the textiles and the architecture protecting the artisans were woven onsite.



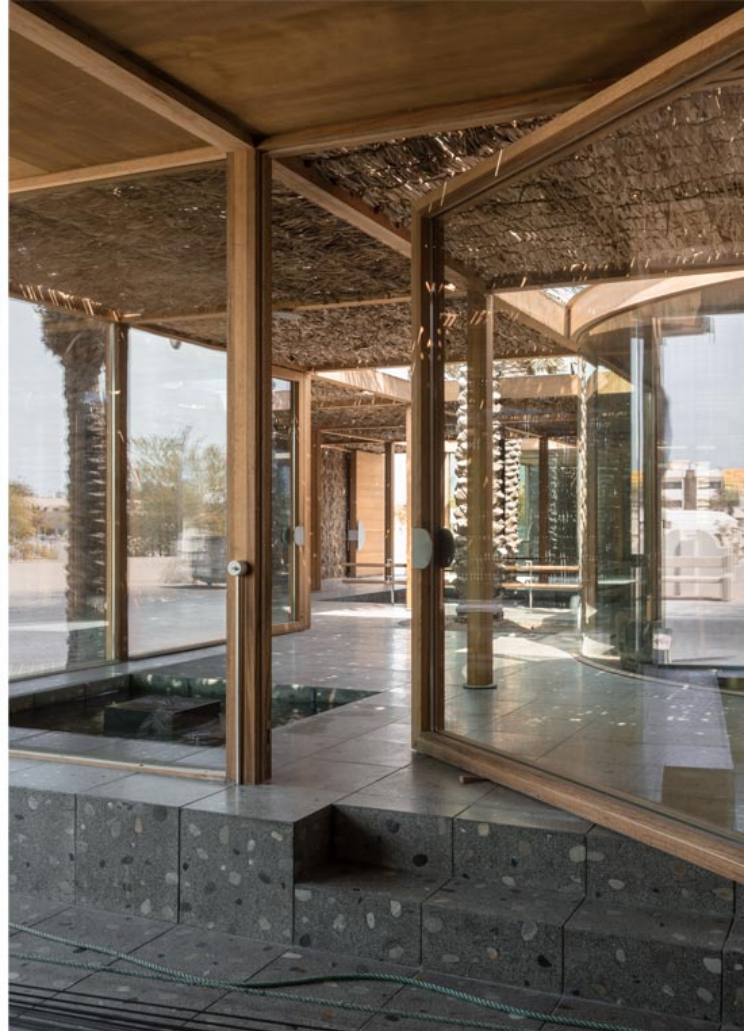
The Al Naseej factory is a textile weaving facility and social space for the local craftspeople of Bani Jamrah. It is a component of a broader effort by the Bahrain Authority for Culture and Antiquities

ISSN : 2575-5374

urbanNext Lexicon

Al Naseej Textile Factory
<https://urbannext.net/al-naseej-textile-factory/>

aimed at redefining and reinvigorating traditional crafts and industries across Bahrain.



ISSN : 2575-5374

urbanNext Lexicon

Al Naseej Textile Factory
<https://urbannext.net/al-naseej-textile-factory/>

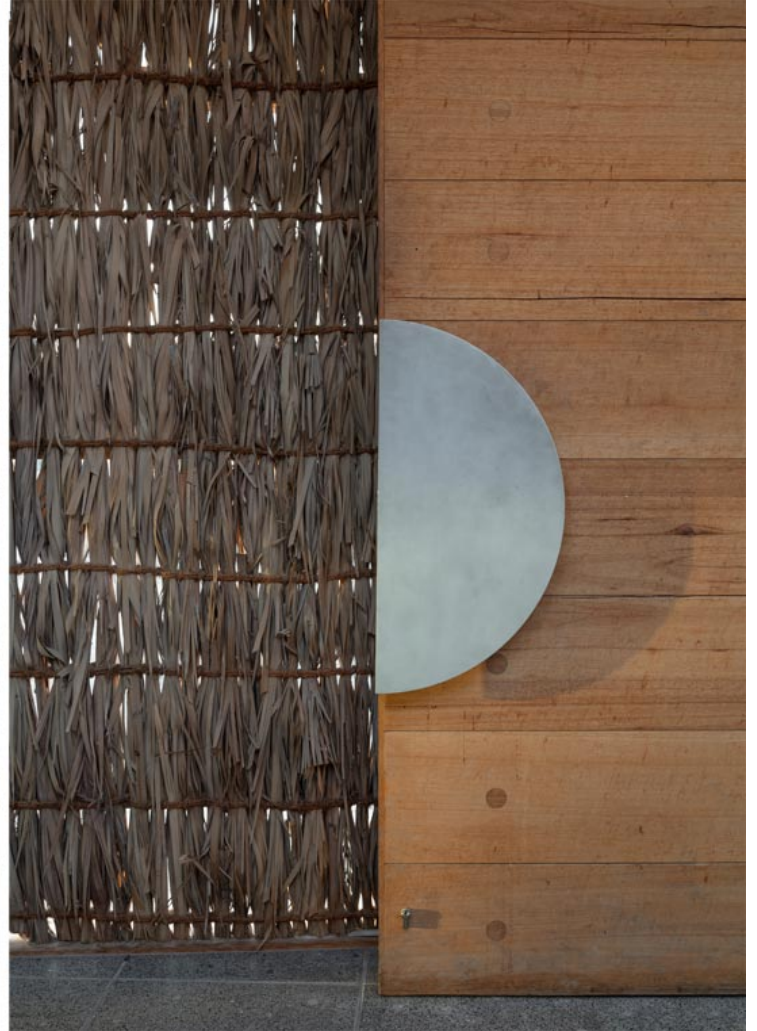


A tight grid of timber columns and beams is used on the site as both an organizing principle and a reference to the date palm plantations in the north of the island, irrigated by a complex network of water channels. The resulting building is a low single-story construction stretching the entire boundary of the site. Only the palm trees pierce through the horizontal ceiling to become the expression of the building.

ISSN : 2575-5374

urbanNext Lexicon

Al Naseej Textile Factory
<https://urbannext.net/al-naseej-textile-factory/>



Internally however, the structure gains figuration derived from the sunken areas where the weavers sit as they operate the timber loom. Spaces for both the production of tapestries and weavings as well as social exchange are defined through a series of precise excavations below the building's floor level. Date palms, ponds and fountains are placed throughout the interior to further break up the rigidity of the gridded structure. The structure is both a garden and a building, open yet protected. Specific functions enclosed solely by glass panels merge with the shaded garden.

ISSN : 2575-5374

urbanNext Lexicon

Al Naseej Textile Factory
<https://urbannext.net/al-naseej-textile-factory/>



ISSN : 2575-5374

urbanNext Lexicon

Al Naseej Textile Factory
<https://urbannext.net/al-naseej-textile-factory/>

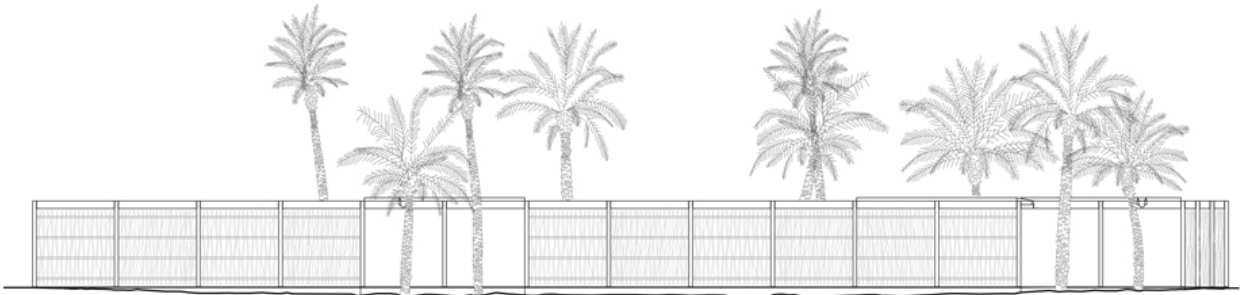
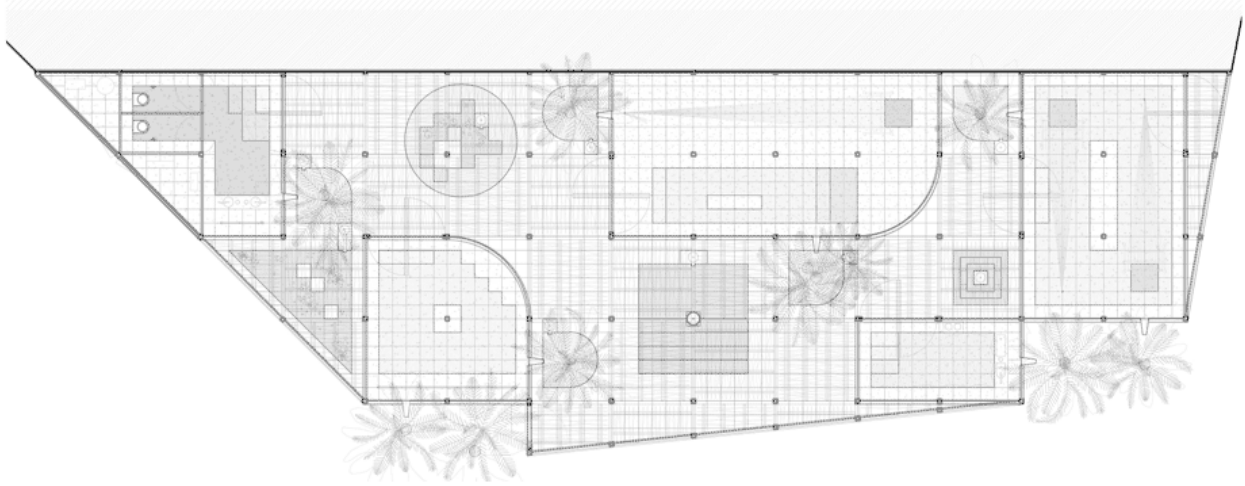


Made from regionally sourced materials, the construction of the building relies upon and celebrates local construction and craft traditions. The shaded structure, greenery, water features and seating areas create a naturally refreshing garden for the inhabitants of the village: a woven architecture.

ISSN : 2575-5374

urbanNext Lexicon

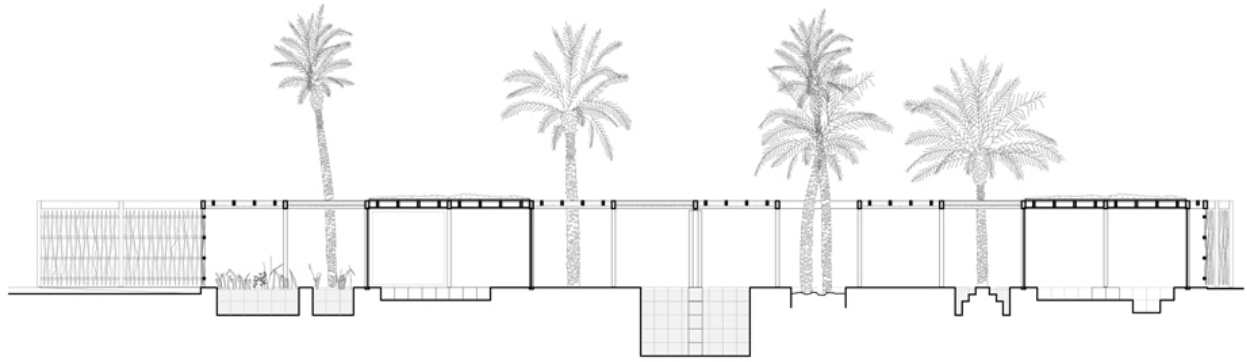
Al Naseej Textile Factory
<https://urbannext.net/al-naseej-textile-factory/>



ISSN : 2575-5374

urbanNext Lexicon

Al Naseej Textile Factory
<https://urbannext.net/al-naseej-textile-factory/>



ISSN : 2575-5374

urbanNext Lexicon

Al Naseej Textile Factory
<https://urbannext.net/al-naseej-textile-factory/>