



ÁGORA BOGOTÁ CONVENTION CENTER: A CITY WITHIN A CITY

Posted on November 4, 2019 by editorship



Categories: [Energy and sustainability](#), [Estudio Herreros](#), [Middle Density](#), [Project](#), [Southern Coexistences](#), [Technology and fabrication](#), [Territory and mobility](#), [Urban Paradigms](#)

Tags: [Active Public Spaces](#), [Adaptative architecture](#), [Bogotá](#), [Circulation](#), [Cluster](#), [Collective identity](#), [Colombia](#), [Connections](#), [Energetic Approach](#), [Glass](#), [Inner courtyard](#), [Macro-scale](#), [Mixed use](#), [Multifunctional building](#), [Multifunctional space](#), [Passive ventilation](#), [Pedestrian realm](#), [Project](#), [Public coexistences](#), [Searches on scales](#), [Southern Coexistences](#), [Technological Approach](#)



ÁGORA-BOGOTÁ will not just be like any convention centre used by sporadic visitors who have little contact with the city, but aims to ascend to the category of a public building infused into all citizens' imagination. Therefore, all efforts have been concentrated on meeting collective as well as specialized demands. First and foremost, it offers an image which represents the aspirations of a society in transformation and that resembles an environmental sensitivity and technological ambition which inscribes the building in today's concerns. The specialized demands focus on practical aspects such as circulation systems, both public, delivery and personnel, easy and comprehensible; an invisible but hierarchical and interconnected distribution of all the internal services that embodies the logistics' scheme of the building; and a concept of flexibility that accepts the programming of very diverse formats, from a concert to a trade fair, from a congress to a film festival of from a grand banquet to a chess championship.





Thanks to the ready adaptability of the rooms, dividing or expanding to meet different needs, and allowing for a wealth of simultaneous uses, the citizens of Bogotá will have frequent occasions to use their building. To this end, the project has adopted two innovative solutions: first, articulating the logistics scheme on the basis of four large vertical circulation and services cores, one in each corner, to facilitate and accommodate the most varied programs; and, second, dispensing with the conventional auditorium's inclined floors and fixed seating in order to visualize ÁGORA-BOGOTÁ as a place for meetings and activities as diverse as anything the event organizers can imagine and the demands of the market can generate.

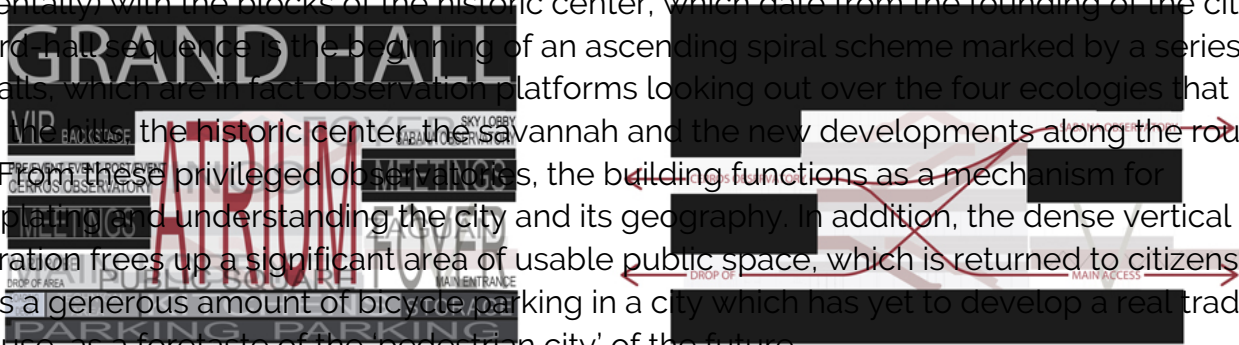


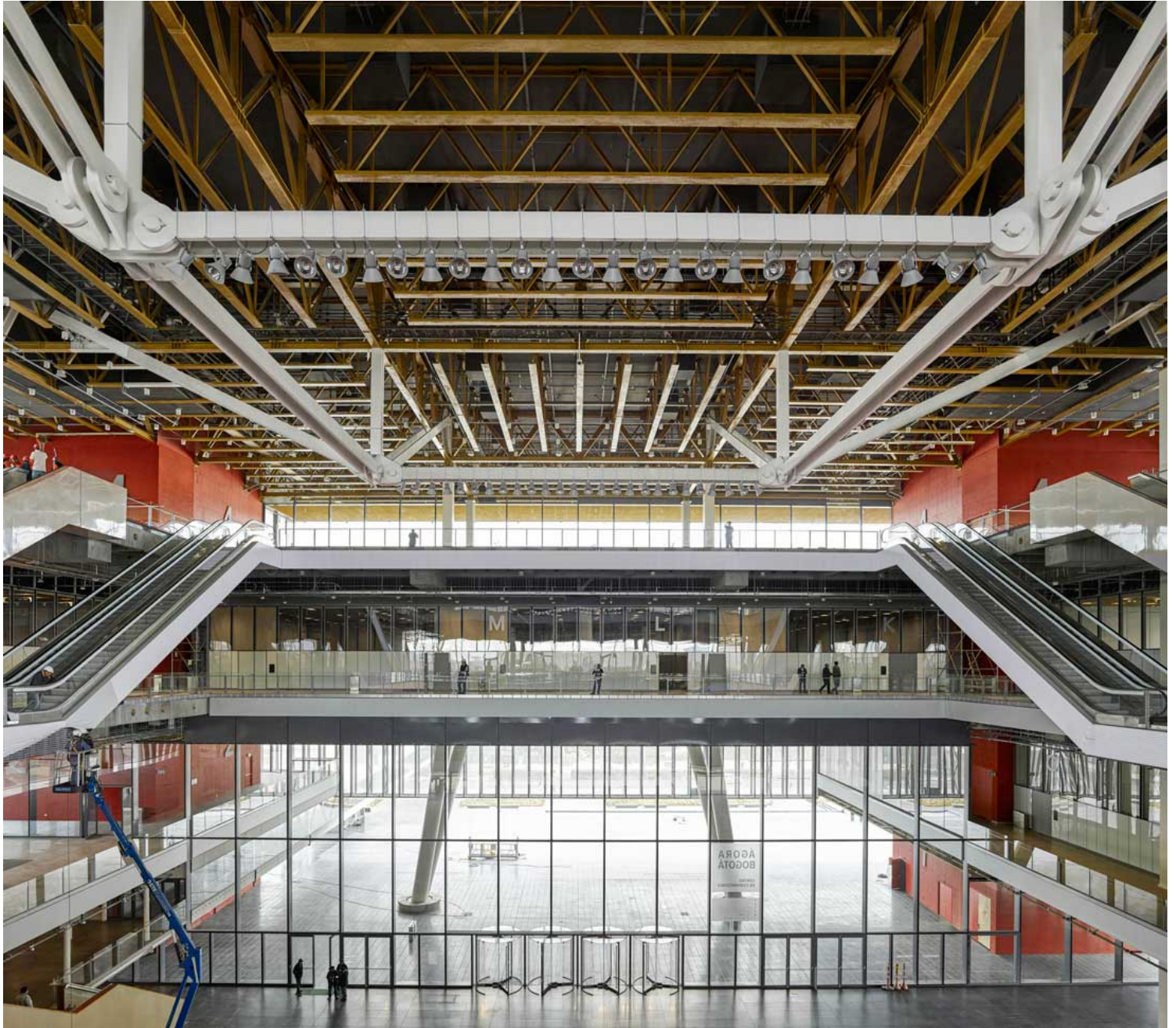




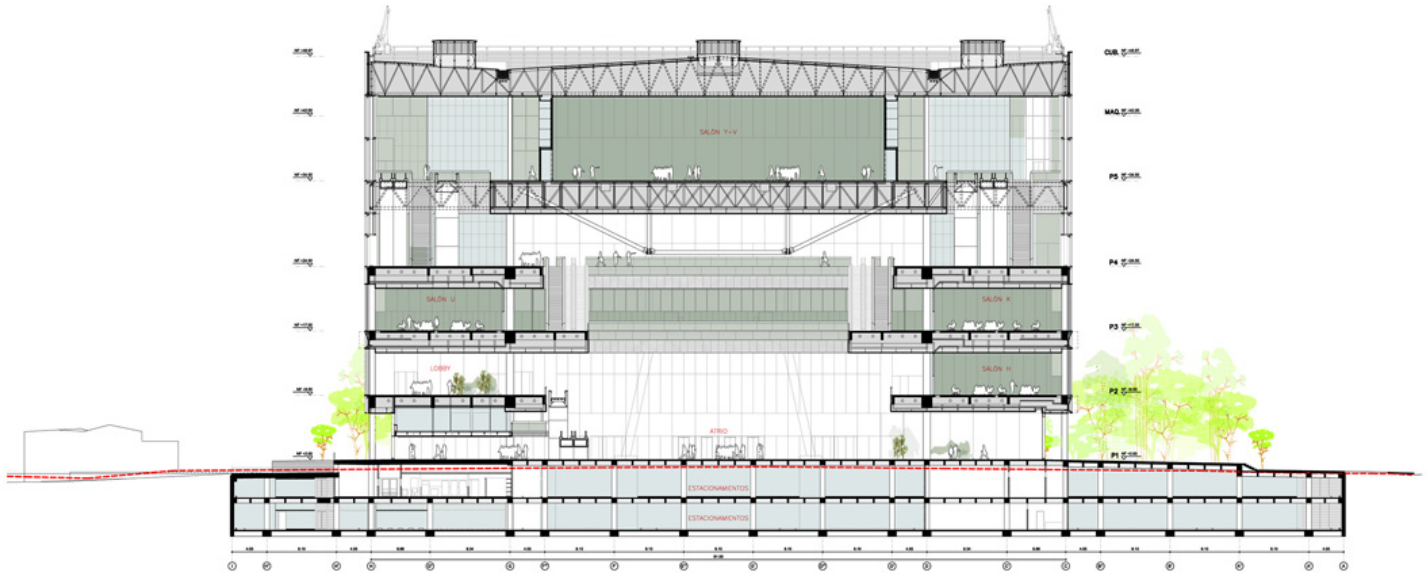
Program

The scale of the complex and the richness of its interior itineraries enable it to be conceived as an encapsulated fragment of the city. Embodying this concept, a monumental covered courtyard (thanks to Bogotá's mild climate, only protection from the rain is required) welcomes users and gives access to the great hall, which functions as a main plaza looked onto by a crown of meeting spaces, configuring an imprint in the plan of the building whose dimensions coincide (by no means coincidentally) with the blocks of the historic center, which date from the founding of the city. The courtyard-hall sequence is the beginning of an ascending spiral scheme marked by a series of plaza-halls, which are in fact observation platforms looking out over the four ecologies that make up the city: the hills, the historic center, the savannah and the new developments along the route to the airport. From these privileged observation points, the building functions as a mechanism for contemplating and understanding the city and its geography. In addition, the dense vertical configuration frees up a significant area of usable public space, which is returned to citizens and provides a generous amount of bicycle parking in a city which has yet to develop a real tradition of bicycle use, as a foretaste of the 'pedestrian city' of the future.









Cross Section

With regard to the construction and the technologies employed, it is evident that the emphasis has been on achieving a holistic confluence between structural schemes, services and construction systems to form a unitary ensemble in which there are no isolated events. The confluence of these three technical aspects is materialized in a series of diaphanous spaces with a state-of-the-art passive air conditioning system that dispenses with traditional HVAC equipment, and its associated energy costs, in favor of intelligent natural ventilation that takes advantage of Bogotá's climate to create a happy symbiosis between the building and the ecosystem of which it is part. The choice of materials has been guided by sobriety – large-format stone paving, dropped ceilings with easy-access lightweight panels housing all the necessary infrastructure, translucent walls in screen-printed glass, and opaque partitions of cement-bonded particle board panels – and clearly reveals the functioning of the building, while giving prominence to the space at the disposal of the users, who are the true protagonists.









There is no doubt that the façade is the signature element of this technical complex. Constructed on the basis of large frames, which incorporate the substructure, the glazing with its different sizes and treatments, and the electronically regulated grilles that draw in fresh air from the exterior, the façade is like a sensitive skin that responds to changing conditions, constantly adapting to the temperature, sunlight and humidity of Bogotá's climate. Ultimately, the façade is the exact expression in the city of the complexity with which architecture operates and the simplicity which it is bound to give back in return.



