



ZI BO THE GREAT WALL MUSEUM OF FINE ART

Posted on August 15, 2017 by content



Categories: [Archstudio](#), [Middle Density](#),
[Project](#), [Territory and mobility](#)

Tags: [Architecture&art](#), [Art](#), [China](#), [Culture](#),
[Educational Building](#), [Heritage](#), [Industrial](#)
[context](#), [Museum](#), [Project](#), [Refurbishment](#),
[Regenerated industrial facility](#), [Regeneration](#),
[Restoration](#), [Shandong](#), [Space-time](#)
[relationship](#), [Territorial Approach](#), [Zhangdian](#),
[Zibo](#)

Project Background

There is a dilapidated industrial factory not far from Zibo train station, located behind the bustling downtown. The industrial factory was established in 1943, and it was originally a pharmaceutical factory. However, with the developing urbanization, the factory was forced to stop and move to a new district. All the equipment had been removed, leaving an empty factory building. After having been abandoned for years, the factory is now seeing a turn in fortune. The factory had the potentials of a long-span structure and its earthy texture. It became a desirable place to visit for many artists. Thus, the factory transforms from an industrial relic into a contemporary art museum. The reconstruction area is a rectangle shape of about 3800 sq.m. It includes three factories and a few unequal-sized storage areas. There were hardly any trees and plants, because there is a civil air defense facility under the concrete floor.

urbanNext Lexicon

Zi Bo The Great Wall Museum of Fine Art
<https://urbannext.net/zi-bo-the-great-wall-museum-of-fine-art/>



ISSN : 2575-5374

urbanNext Lexicon

Zi Bo The Great Wall Museum of Fine Art
<https://urbannext.net/zi-bo-the-great-wall-museum-of-fine-art/>



Site plan

ISSN : 2575-5374

urbanNext Lexicon

Zi Bo The Great Wall Museum of Fine Art
<https://urbannext.net/zi-bo-the-great-wall-museum-of-fine-art/>

ISSN : 2575-5374



Design Concept

Based on the decentralized structure of the industrial factors and the character of the enclosed exterior, the design placed emphasis on the relationship between exterior and interior, enhancing human interaction with the artistic environment, and endowing the factory with life by its commonality and flexibility.

urbanNext Lexicon

Zi Bo The Great Wall Museum of Fine Art
<https://urbannext.net/zi-bo-the-great-wall-museum-of-fine-art/>



ISSN : 2575-5374

urbanNext Lexicon

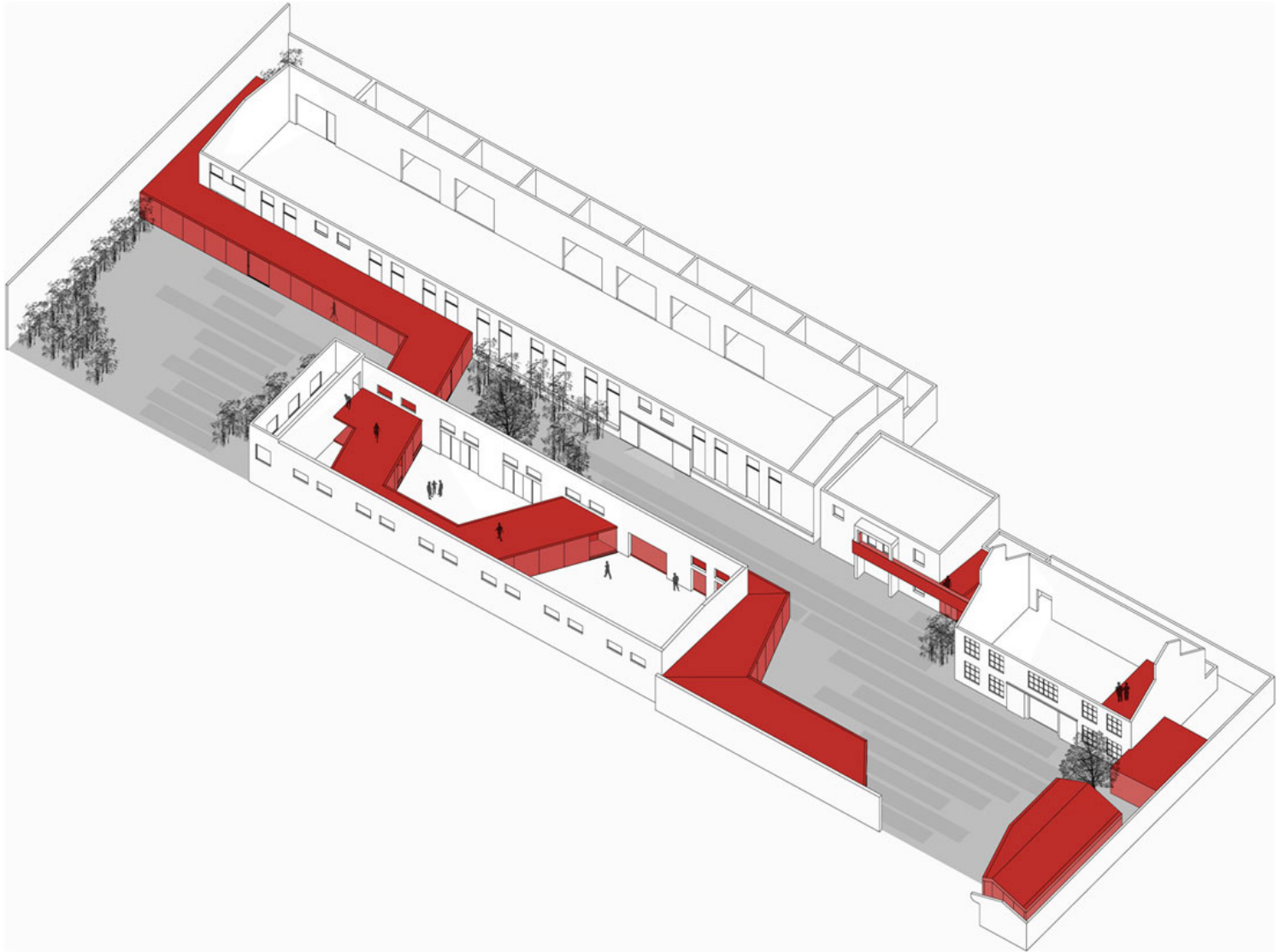
Zi Bo The Great Wall Museum of Fine Art
<https://urbannext.net/zi-bo-the-great-wall-museum-of-fine-art/>



ISSN : 2575-5374

urbanNext Lexicon

Zi Bo The Great Wall Museum of Fine Art
<https://urbannext.net/zi-bo-the-great-wall-museum-of-fine-art/>



A traffic path was created by adding a translucent hallway to connect the interior and exterior of the factory, and it changed the mechanical impression. The sensually curved glassed hallway became a multi-function media, including a book store, tea room, art studio, and discussion room, etc. as well as the display areas.

ISSN : 2575-5374

urbanNext Lexicon

Zi Bo The Great Wall Museum of Fine Art
<https://urbannext.net/zi-bo-the-great-wall-museum-of-fine-art/>



ISSN : 2575-5374

urbanNext Lexicon

Zi Bo The Great Wall Museum of Fine Art
<https://urbannext.net/zi-bo-the-great-wall-museum-of-fine-art/>



Coated glass and gray patterned steel panel are laid on the interior and exterior floor, creating a harmonious horizontal line. As the visitor walks into the hallway, they will see a scenario that can evolve repeatedly. The building retained a maximum of the original characteristics of traditional industrial design, interspersed with modern lighting and display walls.

ISSN : 2575-5374

urbanNext Lexicon

Zi Bo The Great Wall Museum of Fine Art
<https://urbannext.net/zi-bo-the-great-wall-museum-of-fine-art/>



ISSN : 2575-5374

urbanNext Lexicon

Zi Bo The Great Wall Museum of Fine Art
<https://urbannext.net/zi-bo-the-great-wall-museum-of-fine-art/>



Outside, the laid dry and cobblestone grouting with partial tree planting completes the whole environment, which acts in cooperation with the interior space.

ISSN : 2575-5374



Significance of the project

With the development of the economy and the rapid expansion of urbanization in China, new buildings and environments are being created day by day, and older traditional buildings are being demolished. However, there are many methods to show that these buildings are significant and valuable to the city. Art can be a power that can help make this change a reality. A contemporary art space should not only serve as a gallery; it also needs to be a space that embodies multi-functional activity and can serve a broad audience. Letting cities more "convince", making art more "lifestyle".

urbanNext Lexicon

Zi Bo The Great Wall Museum of Fine Art
<https://urbannext.net/zi-bo-the-great-wall-museum-of-fine-art/>



ISSN : 2575-5374

urbanNext Lexicon

Zi Bo The Great Wall Museum of Fine Art
<https://urbannext.net/zi-bo-the-great-wall-museum-of-fine-art/>



ISSN : 2575-5374

urbanNext Lexicon

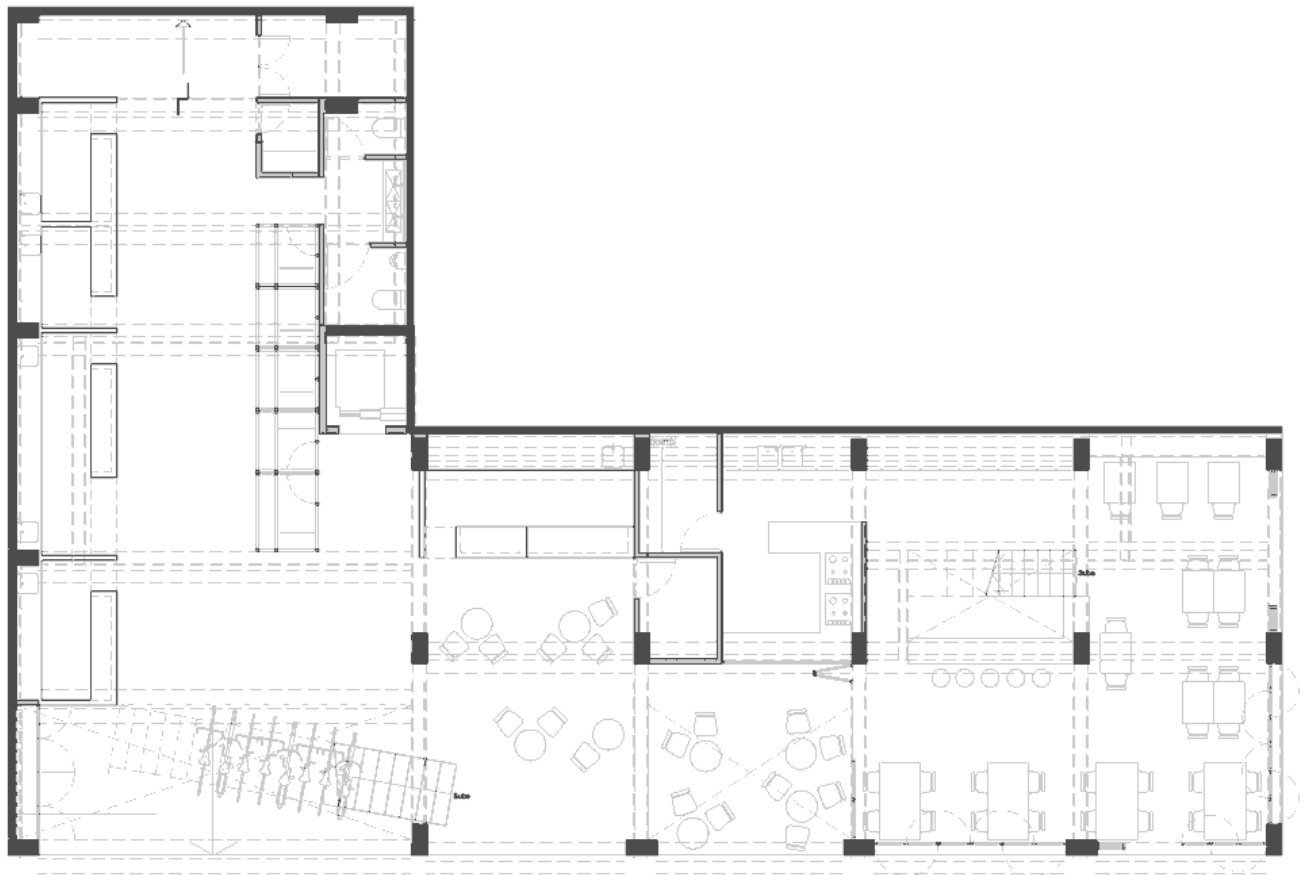
Zi Bo The Great Wall Museum of Fine Art
<https://urbannext.net/zi-bo-the-great-wall-museum-of-fine-art/>



ISSN : 2575-5374

urbanNext Lexicon

Zi Bo The Great Wall Museum of Fine Art
<https://urbannext.net/zi-bo-the-great-wall-museum-of-fine-art/>



ISSN : 2575-5374

urbanNext Lexicon

Zi Bo The Great Wall Museum of Fine Art
<https://urbannext.net/zi-bo-the-great-wall-museum-of-fine-art/>



ISSN : 2575-5374

urbanNext Lexicon

Zi Bo The Great Wall Museum of Fine Art
<https://urbannext.net/zi-bo-the-great-wall-museum-of-fine-art/>

ISSN : 2575-5374