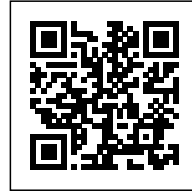




VIA 57 WEST

Posted on May 4, 2017 by urbanNext



Categories: [BIG](#), [BIG-BJARKE INGELS GROUP](#), [Bjarke Ingels](#), [High Density](#), [Project](#), [Senseable Technologies](#), [Technology and fabrication](#), [Territory and mobility](#), [Urban Paradigms](#)

Tags: [Building construction](#), [Buildings](#), [Citizen interaction](#), [Collective housing](#), [Compact building](#), [Contemporary metropolis](#), [Ecological agencies](#), [Ecological researches](#), [Efficiency measures](#), [Experimental buildings](#), [Green growth](#), [Heliomorphism](#), [Housing](#), [Interactive building](#), [Manhattan](#), [Megalopolis](#), [Metropolis](#), [New York](#), [Optimized construction](#), [Optimized living](#), [Project](#), [Public vs. Private](#), [Shade Shaping](#), [Technological Approach](#), [Territorial Approach](#), [Urban conditions](#), [Urban culture](#), [Urban Paradigms](#), [USA](#)

urbanNext Lexicon

VIA 57 West

<https://urbannext.net/via-57-west/>

VIA 57 West is a hybrid between the European perimeter block and a traditional Manhattan high-rise, combining the advantages of both: the compactness and efficiency of a courtyard building with the airiness and the expansive views of a skyscraper.



ISSN : 2575-5374

urbanNext Lexicon

VIA 57 West
<https://urbannext.net/via-57-west/>

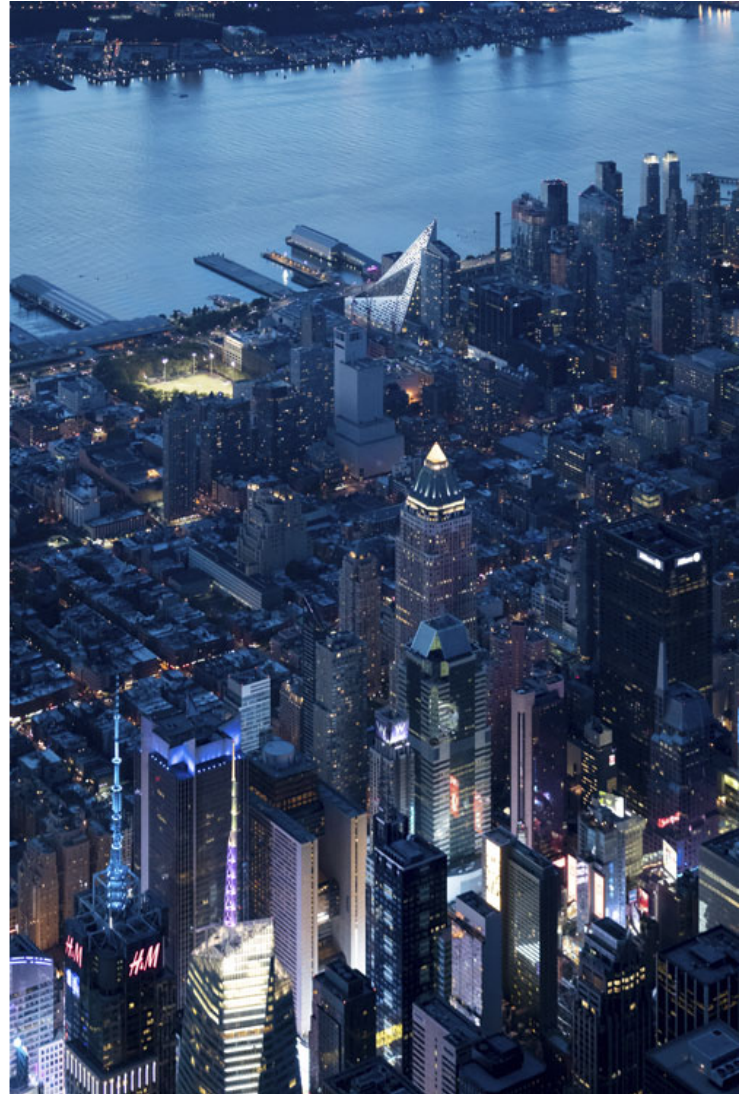


ISSN : 2575-5374

urbanNext Lexicon

VIA 57 West

<https://urbannext.net/via-57-west/>

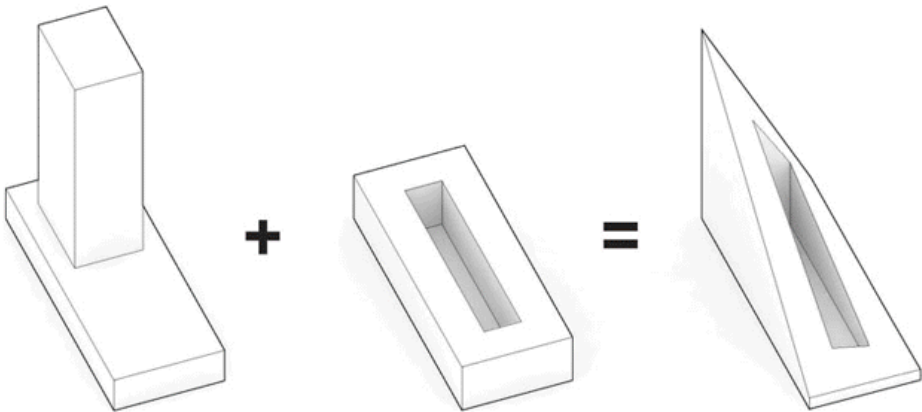


By keeping three corners of the block low and lifting the north-east corner up towards its 450 ft peak, the courtyard opens views towards the Hudson River, bringing low western sun deep into the block and graciously preserving the adjacent Helena Tower's views of the river.

ISSN : 2575-5374

urbanNext Lexicon

VIA 57 West
<https://urbannext.net/via-57-west/>



VIA 57 Diagrams

ISSN : 2575-5374

urbanNext Lexicon

VIA 57 West
<https://urbannext.net/via-57-west/>

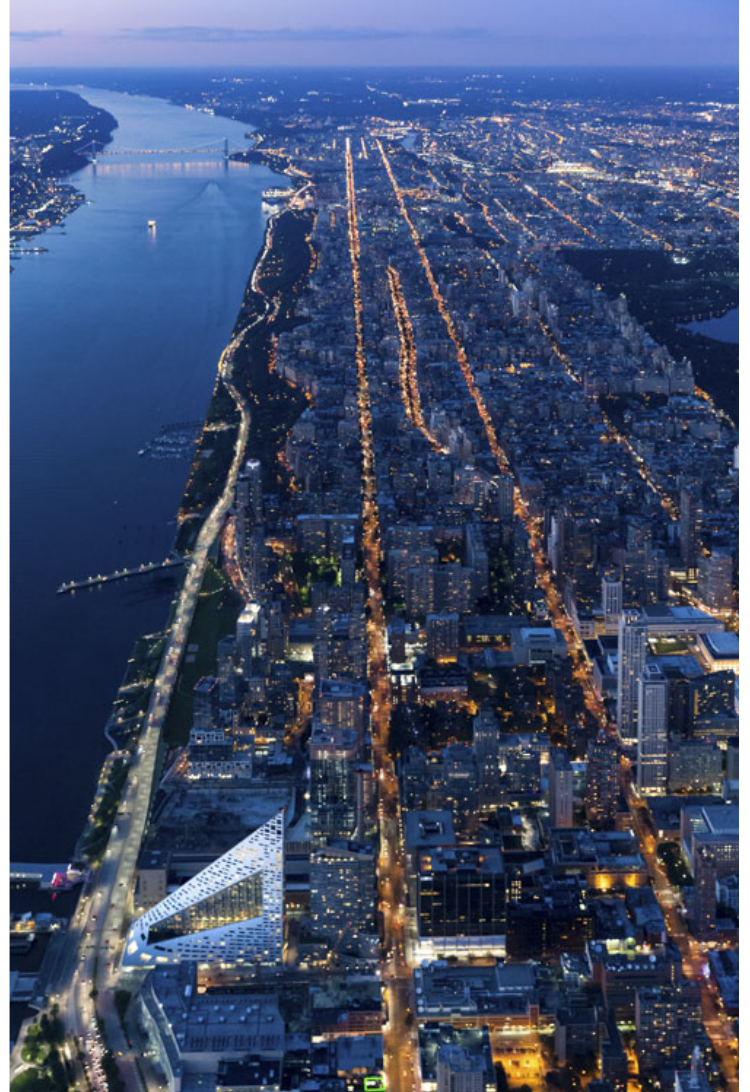


ISSN : 2575-5374

urbanNext Lexicon

VIA 57 West

<https://urbannext.net/via-57-west/>



The form of the building shifts depending on the viewer's vantage point. While appearing like a pyramid from the West-Side-Highway, it turns into a dramatic glass spire from West 58th Street.

ISSN : 2575-5374

urbanNext Lexicon

VIA 57 West

<https://urbannext.net/via-57-west/>



ISSN : 2575-5374

urbanNext Lexicon

VIA 57 West

<https://urbannext.net/via-57-west/>

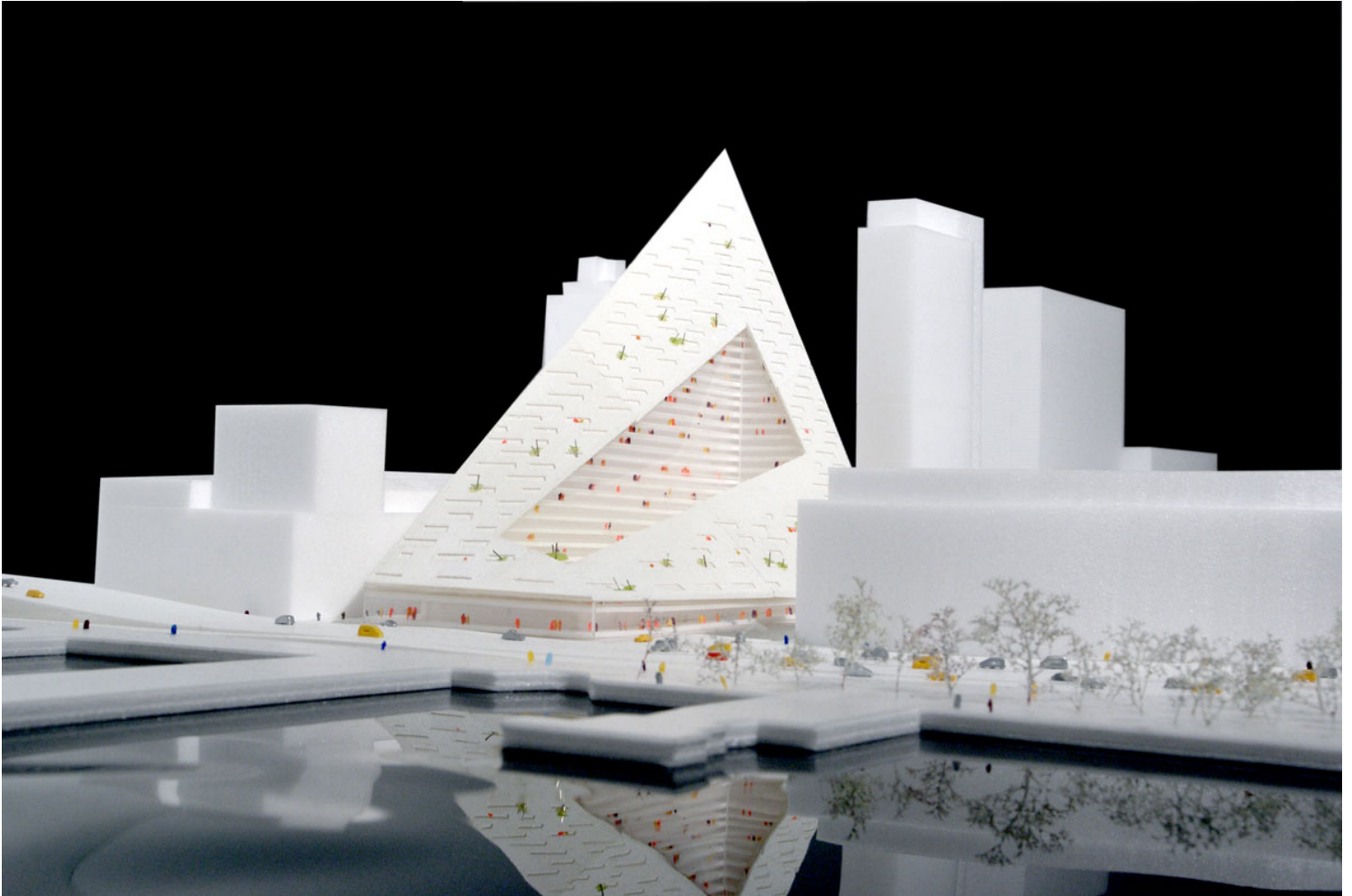


The courtyard which is inspired by the classic Copenhagen urban oasis can be seen from the street and serves to extend the adjacent greenery of the Hudson River Park into VIA. The slope of the building allows for a transition in scale between the low-rise structures to the south and the high-rise residential towers to the north and west of the site. The highly visible sloping roof consists of a simple ruled surface perforated by terraces - each one unique and south-facing. The fishbone pattern of the walls are also reflected in its elevations. Every apartment gets a bay window to amplify the benefits of the generous view and balconies which encourage interaction between residents and passers-by.

ISSN : 2575-5374

urbanNext Lexicon

VIA 57 West
<https://urbannext.net/via-57-west/>

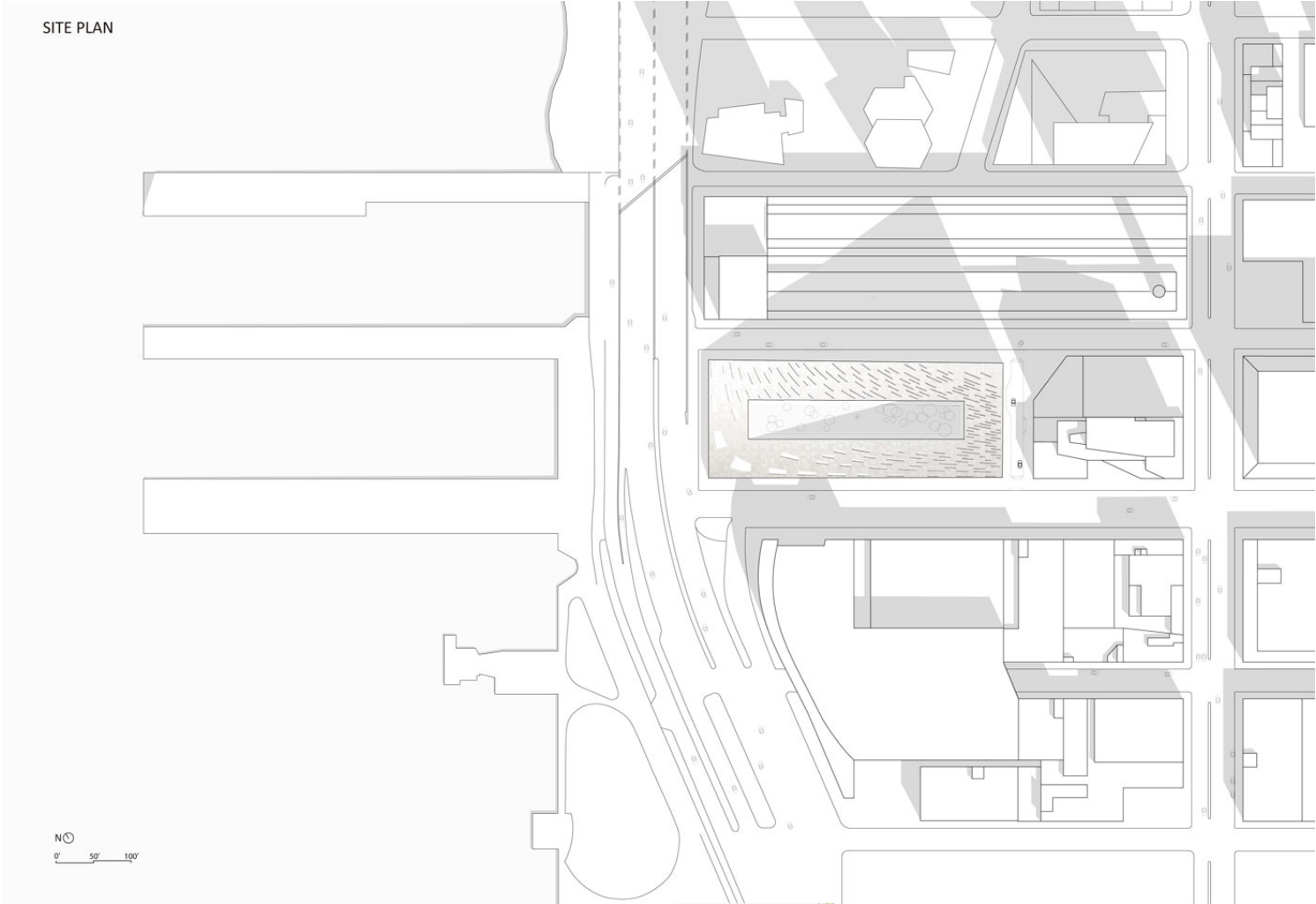


Model

ISSN : 2575-5374

urbanNext Lexicon

VIA 57 West
<https://urbannext.net/via-57-west/>

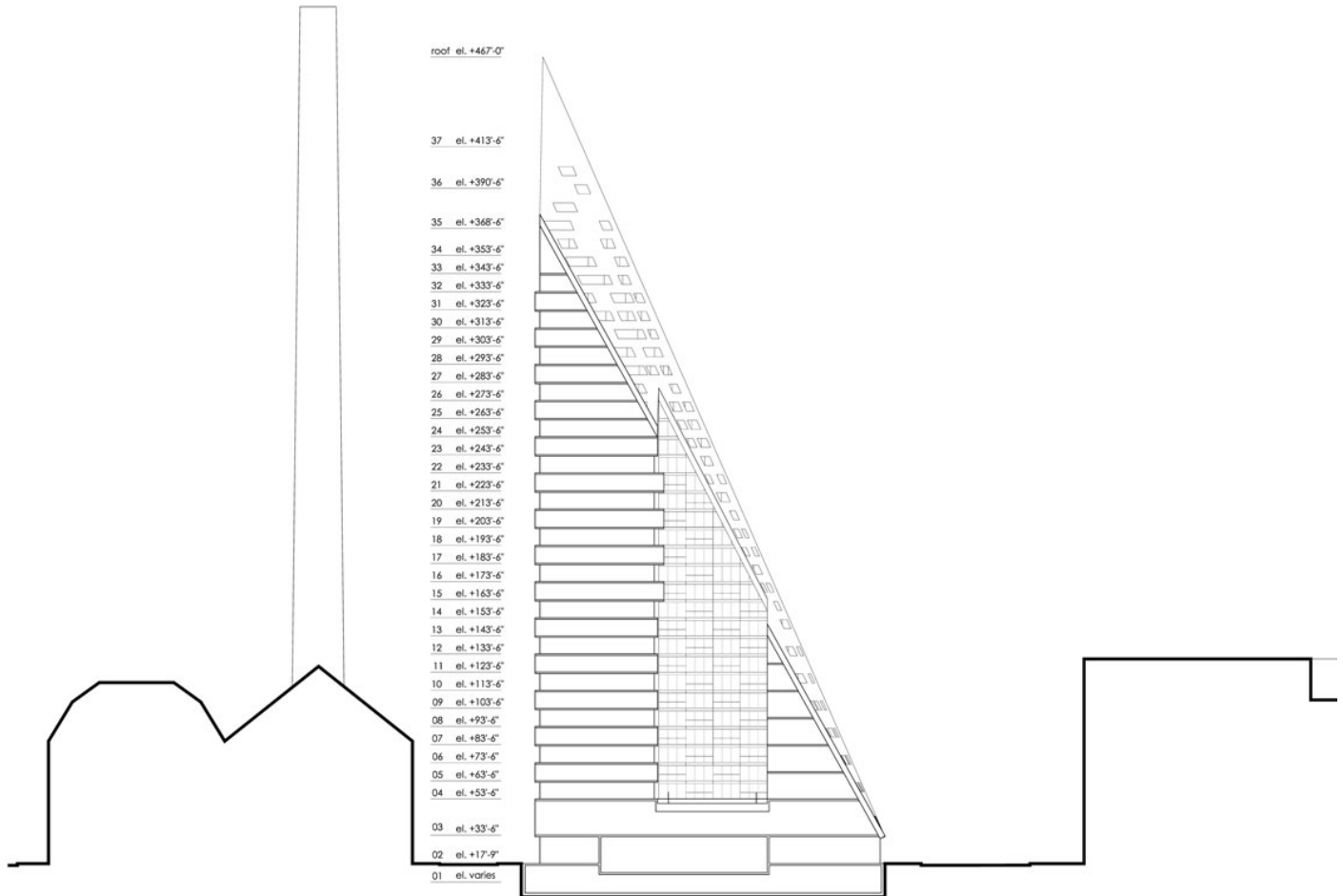


ISSN : 2575-5374

urbanNext Lexicon

VIA 57 West
<https://urbannext.net/via-57-west/>

CROSS SECTION

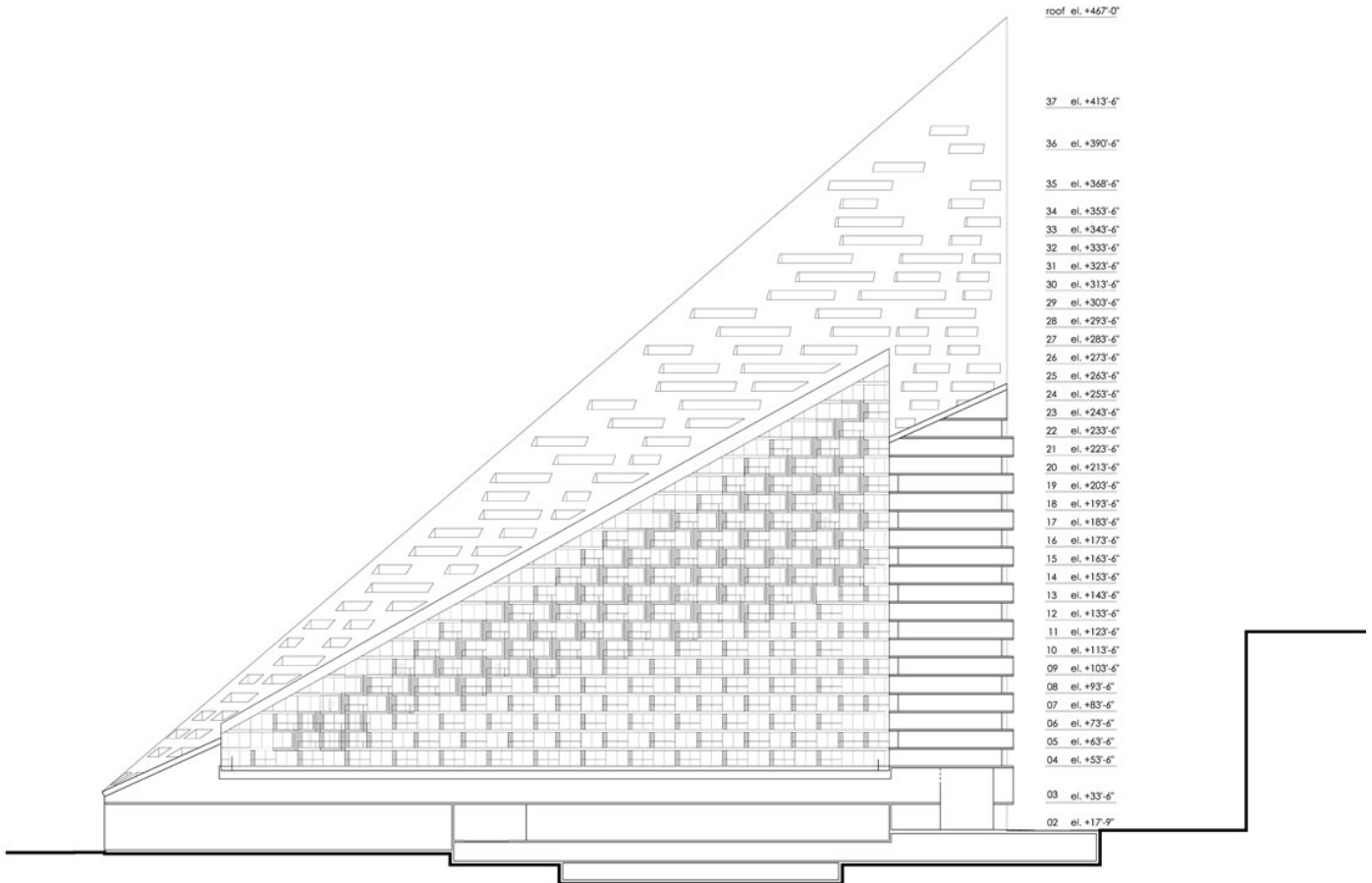


ISSN : 2575-5374

urbanNext Lexicon

VIA 57 West
<https://urbannext.net/via-57-west/>

LONGITUDINAL SECTION



ISSN : 2575-5374

urbanNext Lexicon

VIA 57 West
<https://urbannext.net/via-57-west/>



ISSN : 2575-5374

urbanNext Lexicon

VIA 57 West
<https://urbannext.net/via-57-west/>



ISSN : 2575-5374

urbanNext Lexicon

VIA 57 West
<https://urbannext.net/via-57-west/>



ISSN : 2575-5374

urbanNext Lexicon

VIA 57 West
<https://urbannext.net/via-57-west/>



ISSN : 2575-5374

urbanNext Lexicon

VIA 57 West
<https://urbannext.net/via-57-west/>

ISSN : 2575-5374