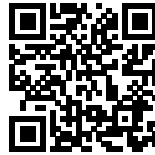




THE WINE AYUTTHAYA

Posted on April 26, 2017 by urbanNext



Categories: [Bangkok Project Studio](#), [Middle Density](#), [Project](#), [Technology and fabrication](#)

Tags: [Ayutthaya](#), [Craftman](#), [Ephemeral pavilion](#), [Installation](#), [Local manufacture](#), [Metaphor](#), [Natural metaphor](#), [Project](#), [PVC sheets](#), [Structural Plywood](#), [Technological Approach](#), [Temporary Interventions](#), [Thailand](#)

urbanNext Lexicon

The Wine Ayutthaya

<https://urbannext.net/the-wine-ayutthaya/>

Situated on a bank of the Chao Phraya River in Phra Nakhon Si Ayutthaya Province, The Wine Ayutthaya is a new leisure place for wine drinkers. The building was constructed to become a new tourist attraction in hopes of stimulating the economy of local communities surrounding this world heritage site, which was the capital city of Thailand 400 years ago. The building is a product of architectural creativity and environmental context molded into a magnet for tourists.

ISSN : 2575-5374



A single-story building blends in with existing large trees. Boonserm Premthada

urbanNext Lexicon

The Wine Ayutthaya

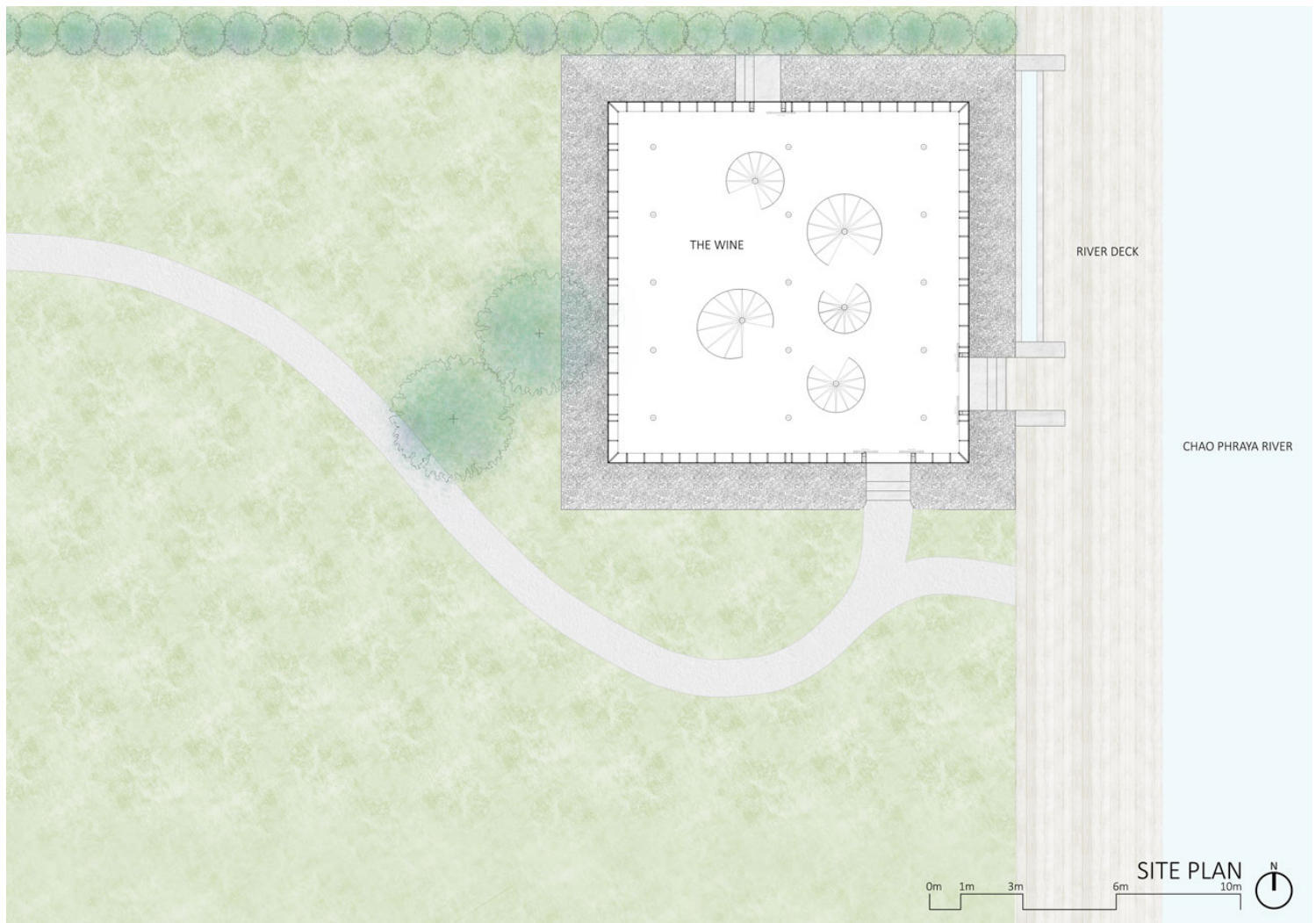
<https://urbannext.net/the-wine-ayutthaya/>



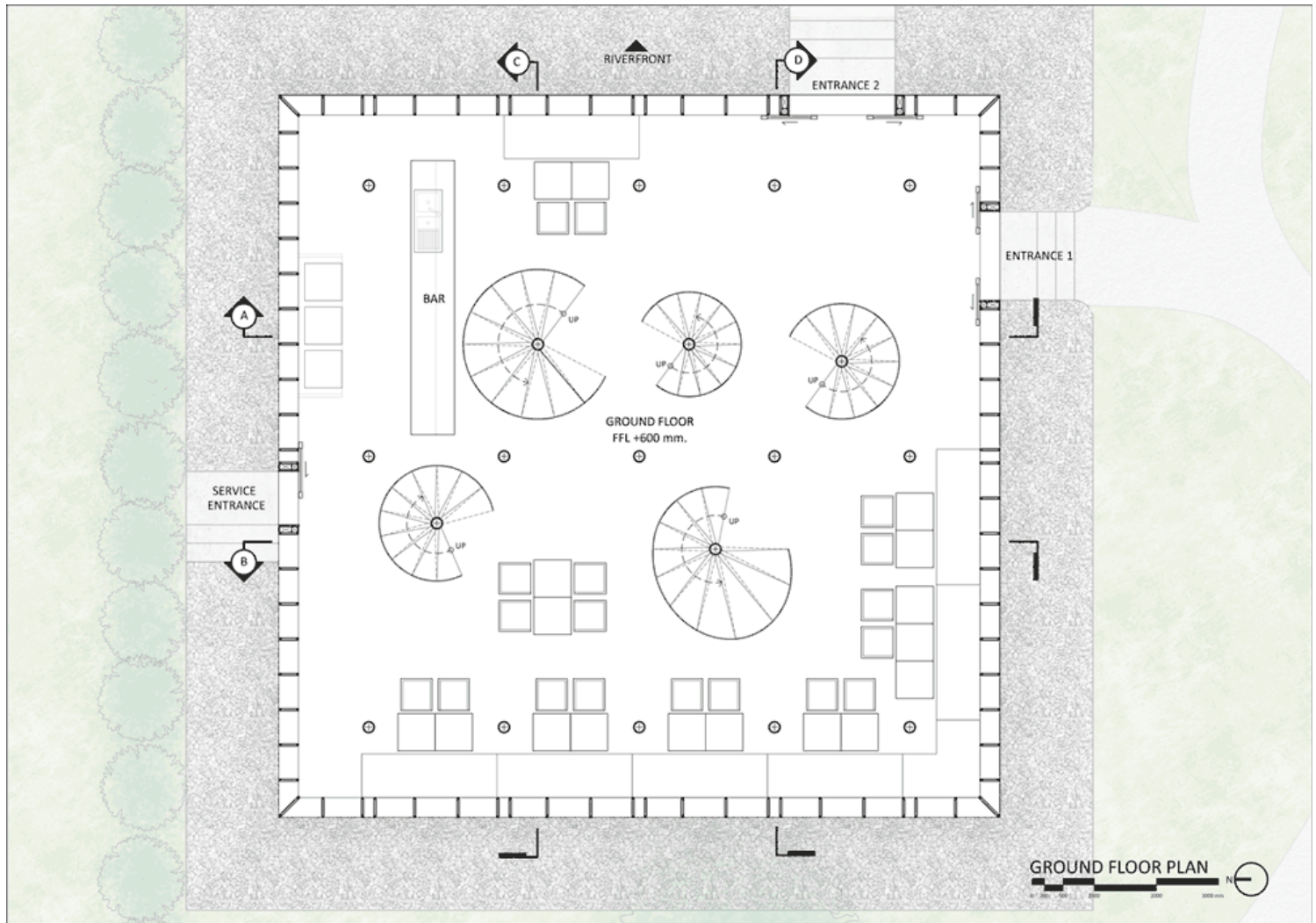
ISSN : 2575-5374

PVC sheets exposed the interior through its clearness. Boonserm Premthada

A single-story building blends in with existing large trees with carefully designed landscape. The building is 9 meters in height and 11 meters in both width and length, and it is made entirely from steel-reinforced plywood. The interior of the wine house is divided into 4 platforms, each with its own height that serves as a vantage point for visitors to absorb the beautiful view of the river from different angles, contrasting the interior with the exterior spaces. There are 5 sets of spiral stairs attached to each platform. The ground floor is occupied by a wine bar, and seats are placed between the staircases. The platforms and staircases are scenic viewpoints.



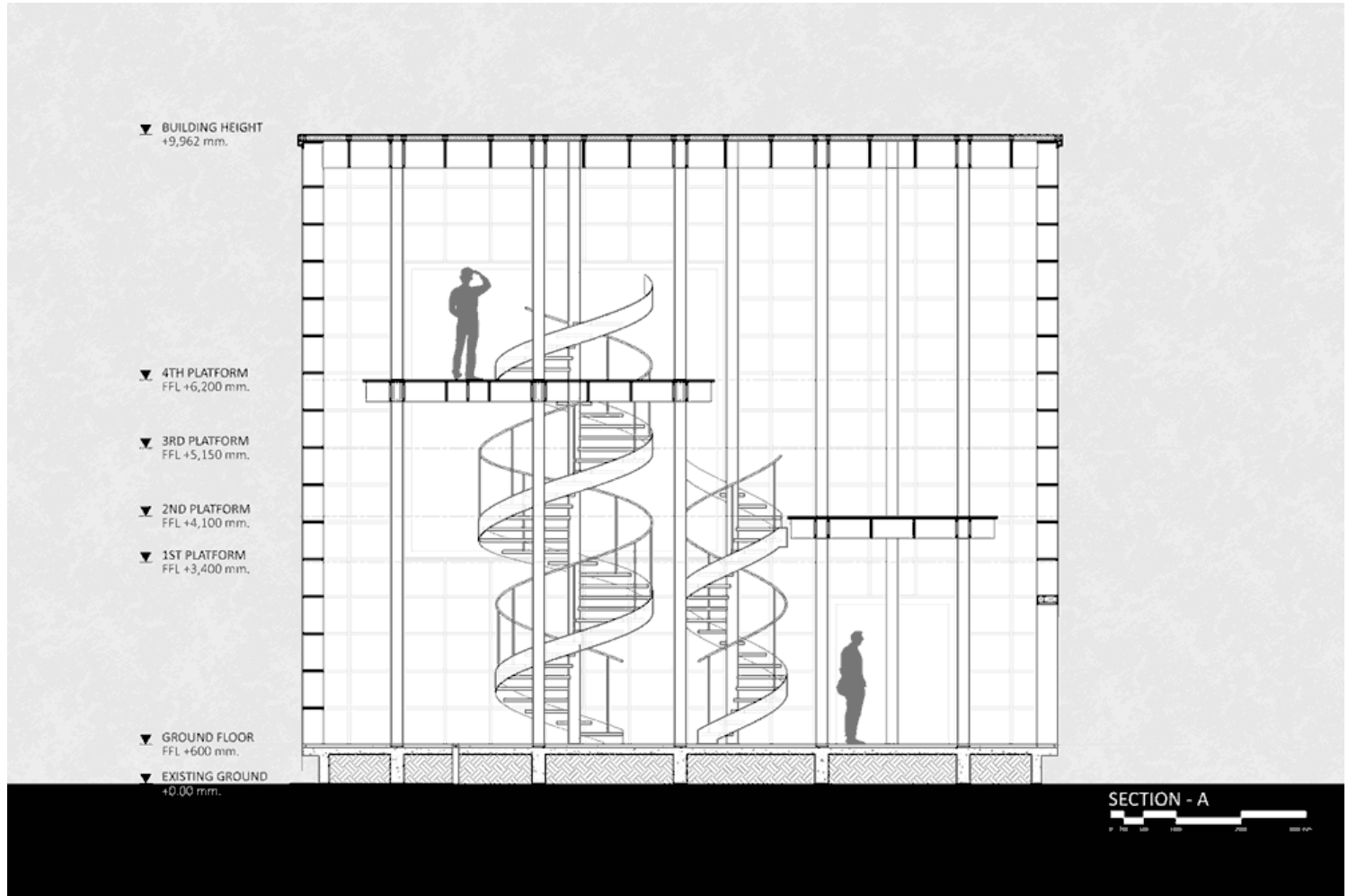
Site Plan



Plans

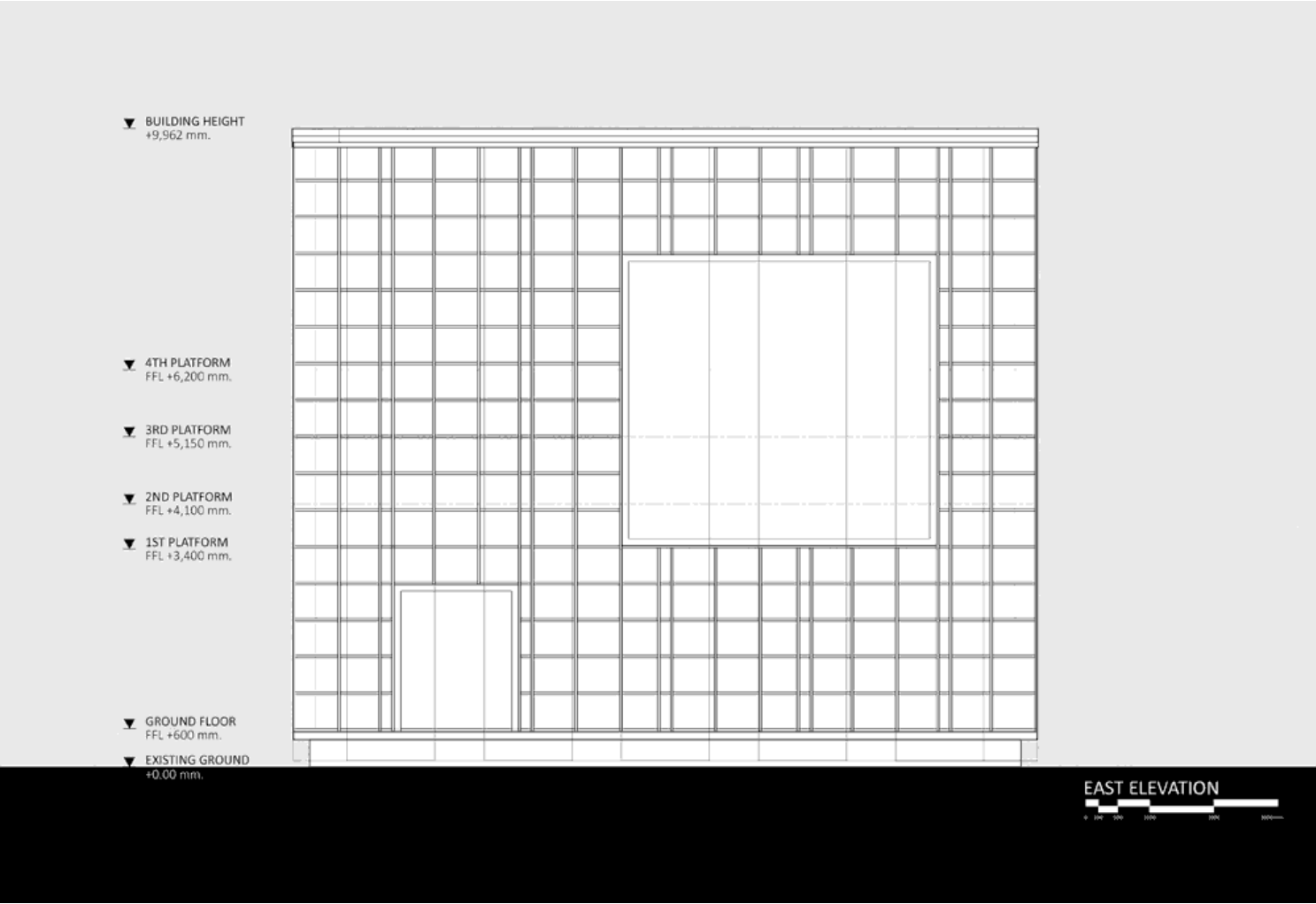
urbanNext Lexicon

The Wine Ayutthaya
<https://urbannext.net/the-wine-ayutthaya/>



Sections

The local wooden houses are the inspiration behind this steel-reinforced plywood structure. The knock-down waffle structure system, which is visually light but structurally strong, is exposed through the design of floor, walls and roof. The waffle walls can be a light filter to help cool down the interior. Moreover, wine drinkers can enjoy another depth of experience through their sense of smell, as the aromas of plywood and wine mingle together.

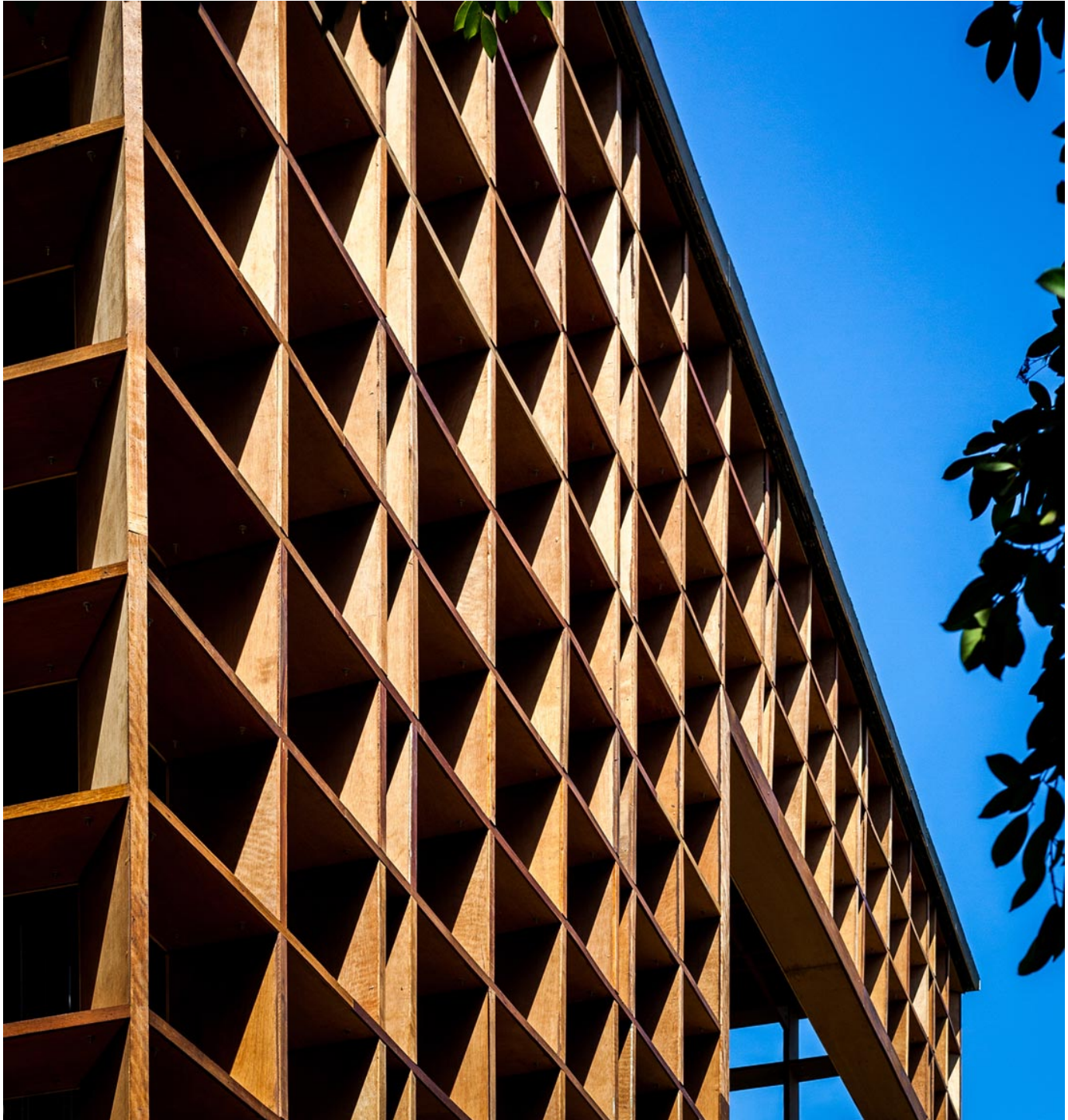


Elevations

urbanNext Lexicon

The Wine Ayutthaya

<https://urbannext.net/the-wine-ayutthaya/>



ISSN : 2575-5374

urbanNext Lexicon

The Wine Ayutthaya
<https://urbannext.net/the-wine-ayutthaya/>

The waffle walls can be a light filter to help cool down the interior atmosphere. Boonserm Premthada



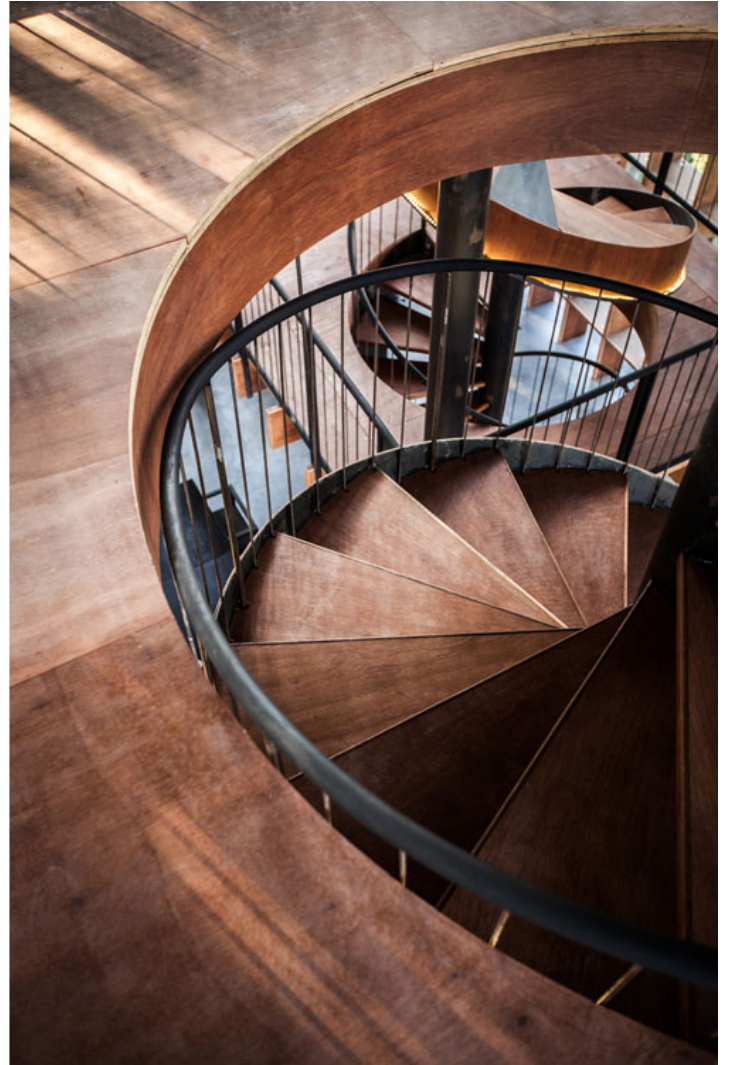
The building is protected from rain and humidity by coating the plywood with resin and covering the building with 1 millimeter thick PVC sheets. Boonserm Premthada

ISSN : 2575-5374

urbanNext Lexicon

The Wine Ayutthaya

<https://urbannext.net/the-wine-ayutthaya/>



The undulating reflects of PVC sheets visually soften the building.

The entire structure build from plywood and steel by local craftsman. Boonserm Premthada

In this building, a material normally used for interior purposes, such as furniture – plywood – is used as a building structure. This broadens the material's potential and transforms the perception of plywood from a temporary material to a permanent one, in an extraordinary edifice.

ISSN : 2575-5374

urbanNext Lexicon

The Wine Ayutthaya

<https://urbannext.net/the-wine-ayutthaya/>



ISSN : 2575-5374



All five spiral staircases were designed not only for circulations to fit into limited spaces but also to serve as structural supports. Furthermore, the usual experience of scale and the amount of spiral stairs have been sculpted to form an unfamiliar new space, arousing in visitors the sense of the abstract.

urbanNext Lexicon

The Wine Ayutthaya
<https://urbannext.net/the-wine-ayutthaya/>



ISSN : 2575-5374

urbanNext Lexicon

The Wine Ayutthaya
<https://urbannext.net/the-wine-ayutthaya/>



ISSN : 2575-5374

urbanNext Lexicon

The Wine Ayutthaya

<https://urbannext.net/the-wine-ayutthaya/>



The building is protected from rain and humidity by coating the plywood with resin and covering the building with 1 millimeter thick PVC sheets. From the exterior, the undulating reflections of the PVC sheets visually soften the building, while exposing the interior through their transparency.

The purpose of The Wine Ayutthaya is to overcome conceptual limitations and address challenges in terms of material and scale in order to create an all-embracing architecture, a work of art to revive the spirit of this once majestic ancient city.

ISSN : 2575-5374

urbanNext Lexicon

The Wine Ayutthaya
<https://urbannext.net/the-wine-ayutthaya/>



Wine drinkers can enjoy another depth of experience through their sense of smell, as the aromas of plywood and wine mingle together. Boonserm Premthada

ISSN : 2575-5374

urbanNext Lexicon

The Wine Ayutthaya
<https://urbannext.net/the-wine-ayutthaya/>

ISSN : 2575-5374