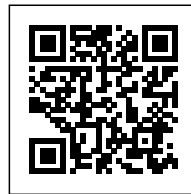




THE WAVE: AN ARCHITECTURAL EMBODIMENT OF THE SURROUNDING LANDSCAPE

Posted on March 27, 2019 by martabuges



Categories: [Henning Larsen Architects](#), [Middle Density](#), [Project](#), [Territory and mobility](#), [Urban Paradigms](#)

Tags: [Building construction](#), [Construction](#), [Context](#), [Denmark](#), [Design](#), [Economic crisis](#), [Geography](#), [Heritage](#), [Housing](#), [Iconic architecture](#), [Identity](#), [Innovation](#), [Landmark](#), [Landscape](#), [Performative Envelope](#), [Pier](#), [Project](#), [Residential](#), [Tower](#), [Velje](#), [Waterfront](#), [Watery Territory](#)

urbanNext Lexicon

The Wave: An Architectural Embodiment of the Surrounding
Landscape

<https://urbannext.net/the-wave/>

A visually distinctive new presence on the Vejle waterfront, The Wave stands as an architectural embodiment of the surrounding landscape.



Following an 11-year construction period interrupted by the global financial crisis, Henning Larsen's The Wave apartment building in Vejle, Denmark has finally reached completion.

ISSN : 2575-5374

urbanNext Lexicon

The Wave: An Architectural Embodiment of the Surrounding
Landscape

<https://urbannext.net/the-wave/>



ISSN : 2575-5374

urbanNext Lexicon

The Wave: An Architectural Embodiment of the Surrounding

Landscape

<https://urbannext.net/the-wave/>



Construction on the 14,000 m² complex, consisting of 100 apartments, began in 2006, following an architectural vision of five consecutive wave-shaped towers lining the water along Vejle Fjord. However, the global recession of 2008 interrupted construction after the completion of only two towers. They stood unaccompanied along the waterfront, the first chapters in an unfinished story.

ISSN : 2575-5374

urbanNext Lexicon

The Wave: An Architectural Embodiment of the Surrounding
Landscape

<https://urbannext.net/the-wave/>



ISSN : 2575-5374

urbanNext Lexicon

The Wave: An Architectural Embodiment of the Surrounding

Landscape

<https://urbannext.net/the-wave/>



Although the project was only partially completed, the first stage of The Wave drew international attention. The two towers were named 'Residential Building of the Year' by the Danish trade magazine *Byggeri* in 2009, followed by an ABB LEAF Award for innovative architecture in 2012, and the prestigious Civic Trust Award in 2013. It was the first time a Danish architect won the award in 51 years.

ISSN : 2575-5374

urbanNext Lexicon

The Wave: An Architectural Embodiment of the Surrounding
Landscape

<https://urbannext.net/the-wave/>



ISSN : 2575-5374

urbanNext Lexicon

The Wave: An Architectural Embodiment of the Surrounding

Landscape

<https://urbannext.net/the-wave/>



The Wave incorporates an open, public pier, establishing it as a social and residential hub and an enduring presence in the vitalization of the Vejle waterfront. After construction efforts were reinitiated in 2015, the final three towers were completed – fulfilling Henning Larsen's original vision. Its five iconic crests rising above Vejle Fjord, The Wave stands as an architectural tribute to local heritage and geography.

ISSN : 2575-5374

urbanNext Lexicon

The Wave: An Architectural Embodiment of the Surrounding

Landscape

<https://urbannext.net/the-wave/>



"The land surrounding Vejle is unique for its rolling hills, which are an uncommon sight in Denmark," explains Søren Øllgaard, partner and design director at Henning Larsen. "We designed The Wave as a striking new presence in the Vejle skyline, one that reflects and embodies the surrounding area. We feel our design merges our own contemporary designs with a strong sense of local identity."

ISSN : 2575-5374

urbanNext Lexicon

The Wave: An Architectural Embodiment of the Surrounding
Landscape

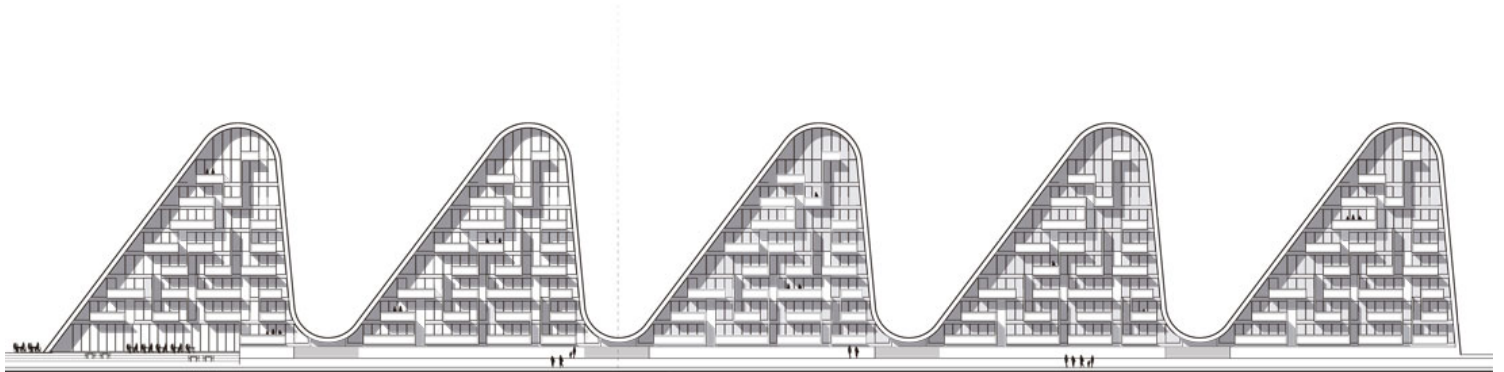
<https://urbannext.net/the-wave/>



urbanNext Lexicon

The Wave: An Architectural Embodiment of the Surrounding
Landscape

<https://urbannext.net/the-wave/>



THE WAVE
ELEVATION - SCALE 1:500
HENNING LARSEN ARCHITECTS

ISSN : 2575-5374

urbanNext Lexicon

The Wave: An Architectural Embodiment of the Surrounding

Landscape

<https://urbannext.net/the-wave/>

ISSN : 2575-5374