



## THE FRENCH INTERNATIONAL SCHOOL OF BEIJING (LFIP)

*Posted on March 6, 2017 by urbanNext*



**Categories:** [Energy and sustainability](#), [Jacques Ferrier Architecture](#), [Middle Density](#), [Project](#), [Sensual City Studio](#), [Technology and fabrication](#)

**Tags:** [Beijing](#), [China](#), [Educational Building](#), [Facilities](#), [Identity](#), [Landscape Architecture](#), [Multifunctional building](#), [Multifunctional space](#), [Project](#), [Second skin](#), [Technological Approach](#), [Tradition](#), [Wood](#)

# urbanNext Lexicon

The French International School of Beijing (LFIP)  
<https://urbannext.net/the-french-international-school-of-beijing-lfip/>

The French School of Beijing, designed by Jacques Ferrier Architecture and Sensual City Studio, was imagined as a built landscape. It is being developed on a site in the "Orchard" neighbourhood, which takes its name from the old orchards that, until recently, were a defining feature of this stretch of land alongside the road to the airport. Since then, the development of high-end residential blocks and international schools has introduced a new urban character with collections of low-rise buildings alongside generous green spaces.



ISSN : 2575-5374



# urbanNext Lexicon

The French International School of Beijing (LFIP)  
<https://urbannext.net/the-french-international-school-of-beijing-lfip/>



The building creates a continuous and unified space on the site, defining the various walkways and in line with the roads. It offers students and teachers a combination of protected and open spaces, with the landscape always present as a backdrop. The ground floor is home to shared spaces and functions: underneath an awning, the communal spaces for the various schools alternate with covered playgrounds. All of the outdoor spaces open towards the canteen's orchard and the sports facilities.

ISSN : 2575-5374

# urbanNext Lexicon

The French International School of Beijing (LFIP)  
<https://urbannext.net/the-french-international-school-of-beijing-lfip/>



ISSN : 2575-5374



# urbanNext Lexicon

The French International School of Beijing (LFIP)  
<https://urbannext.net/the-french-international-school-of-beijing-lfip/>



ISSN : 2575-5374

# urbanNext Lexicon

The French International School of Beijing (LFIP)  
<https://urbannext.net/the-french-international-school-of-beijing-lfip/>

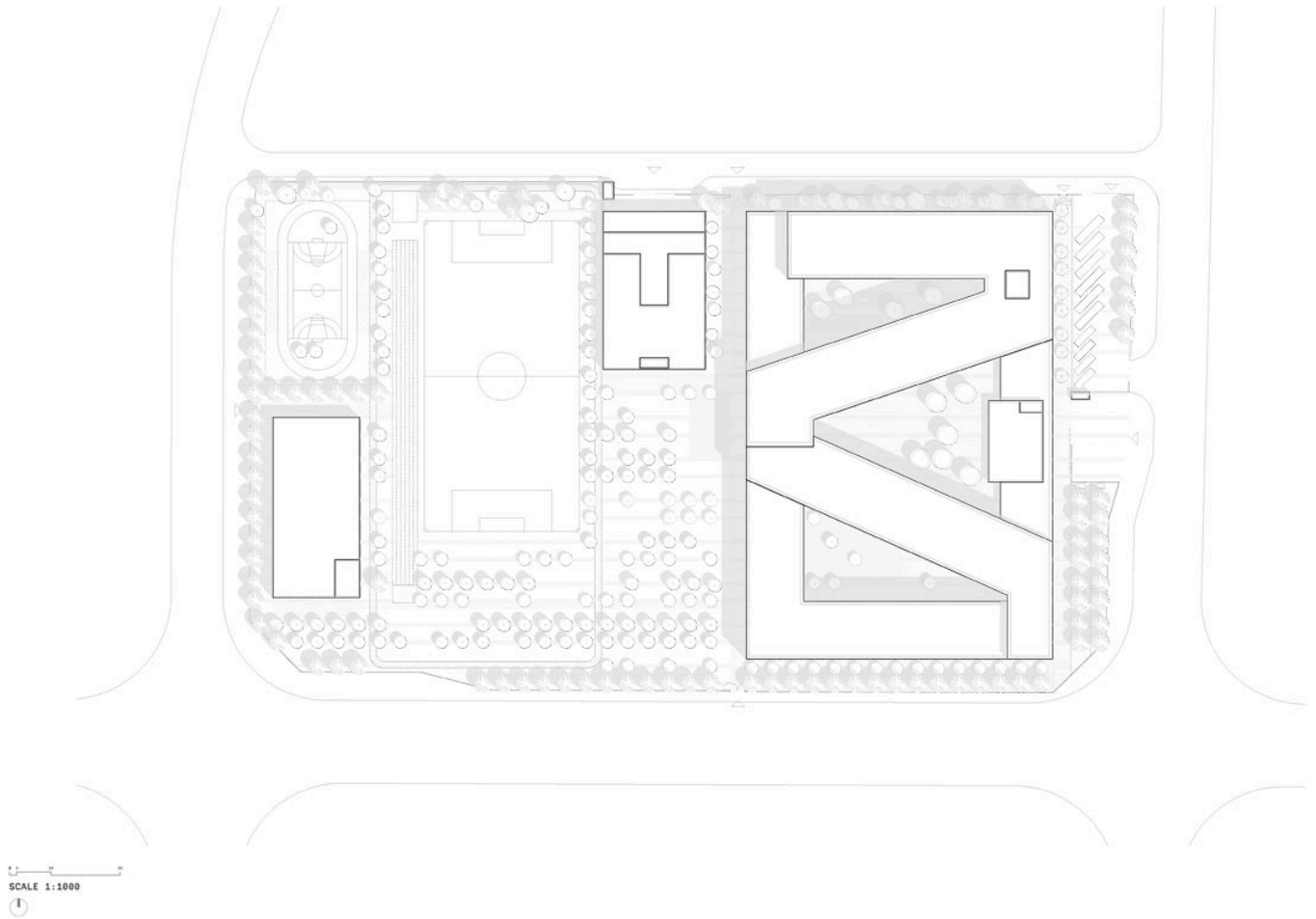


The entrances to the primary school and the secondary school and college are clearly separated, as are the flows of different students. There are, however, connections between the different sections of the school for the staff and teachers. The organization of the space is unambiguous and easy to read: the school hall and library are recognizable as soon as you enter.

ISSN : 2575-5374

# urbanNext Lexicon

The French International School of Beijing (LFIP)  
<https://urbannext.net/the-french-international-school-of-beijing-lfip/>



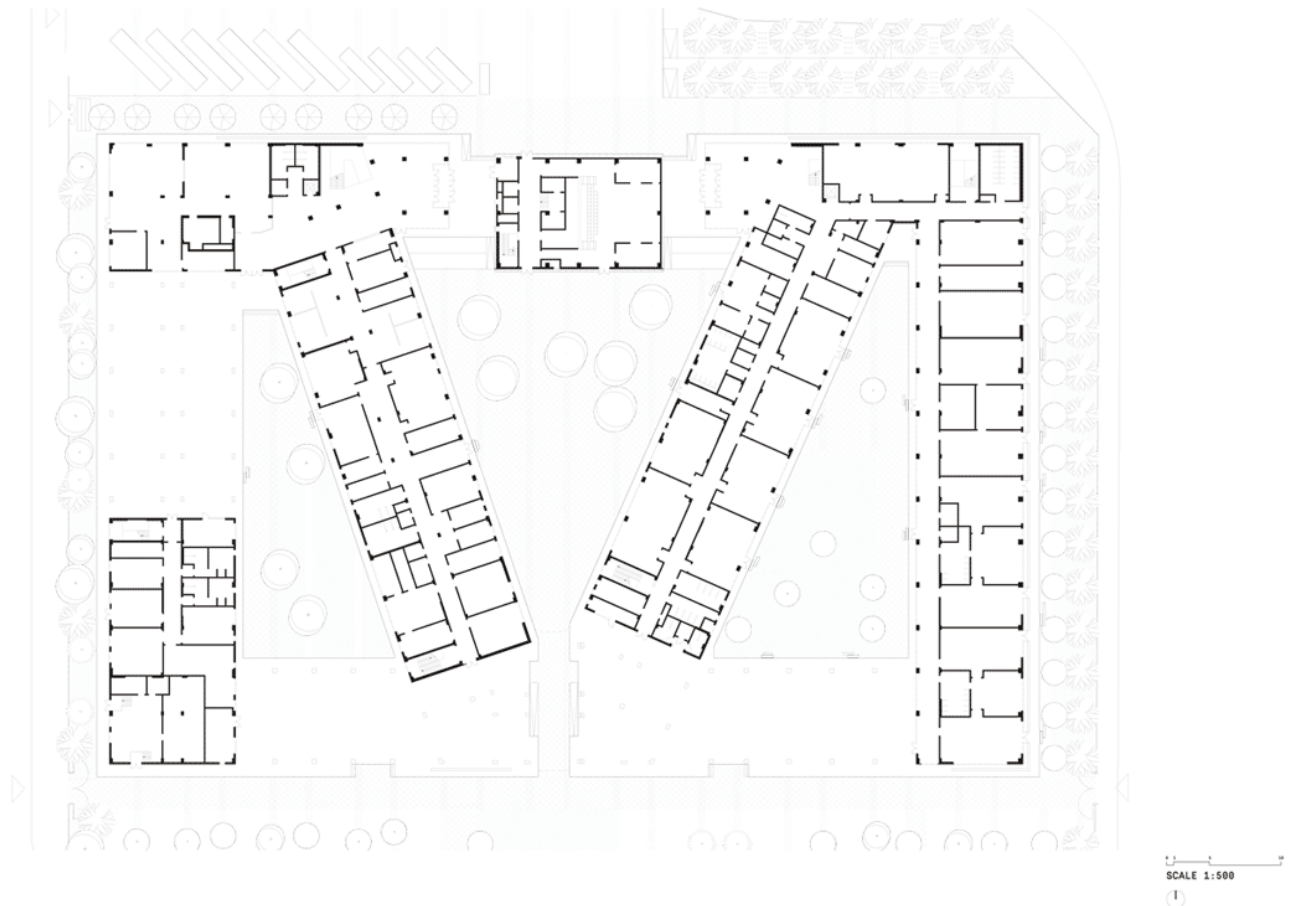
**Site Plan**

ISSN : 2575-5374

# urbanNext Lexicon

The French International School of Beijing (LFIP)  
<https://urbannext.net/the-french-international-school-of-beijing-lfip/>

INTERNATIONAL FRENCH SCHOOL OF BEIJING  
GROUND FLOOR



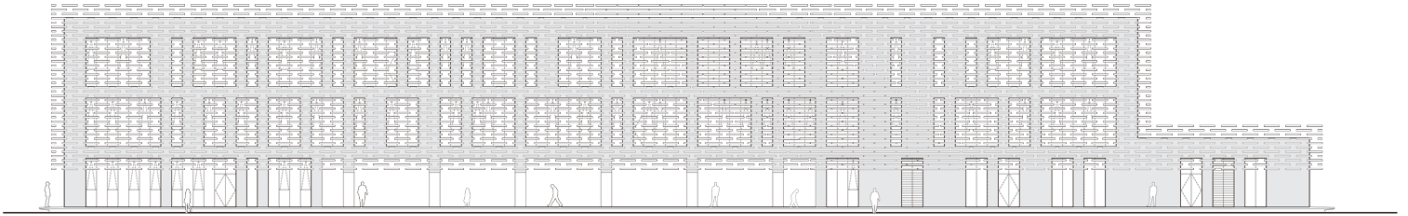
## Plans

ISSN : 2575-5374

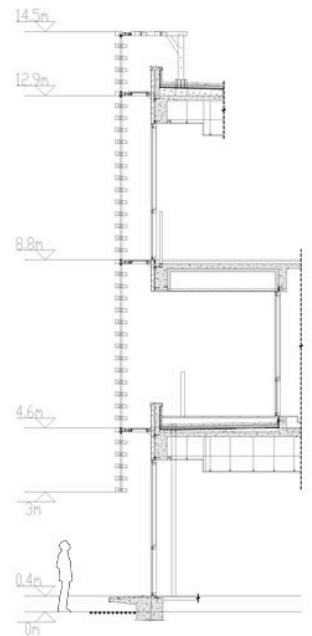
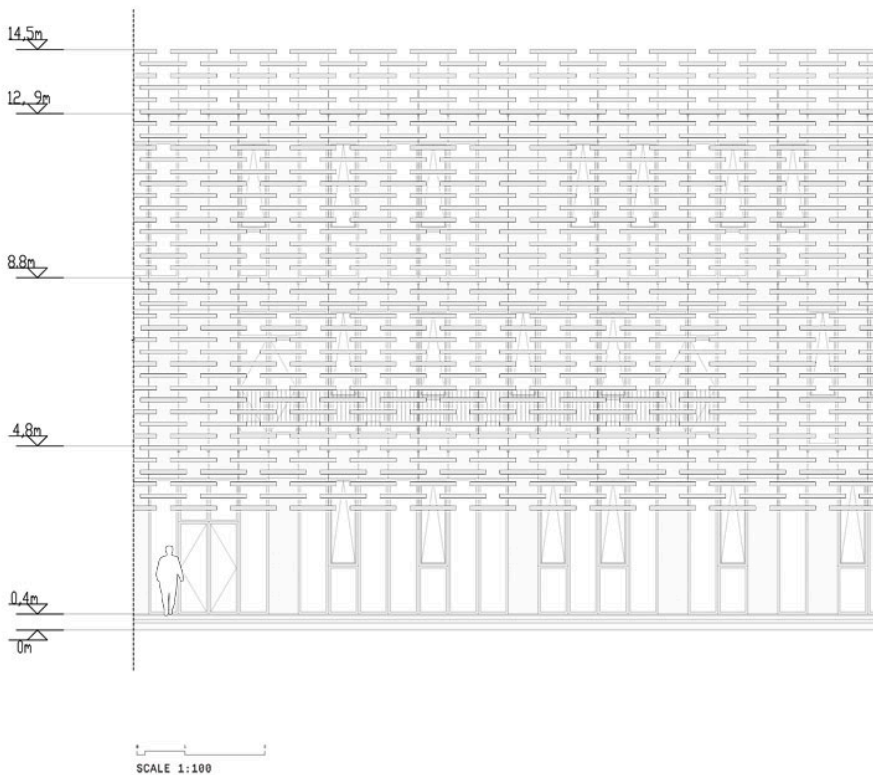


# urbanNext Lexicon

The French International School of Beijing (LFIP)  
<https://urbannext.net/the-french-international-school-of-beijing-lfip/>



## Elevations



ISSN : 2575-5374

## Elevation Detail

From the second floor up, the classrooms are organized in a rational and flexible way. They are clad in a wooden lattice which seems to float above the organic surroundings formed by the lines of fruit trees. From the inside, this lattice is porous enough to let through light and not obscure views of the outside. It plays a major role in shading the building from the sunlight and protecting the school's activities from outside eyes. Finally, the lattice creates a serene, innovative and identifiable architectural look, drawing inspiration from traditional Chinese architecture.





# urbanNext Lexicon

The French International School of Beijing (LFIP)  
<https://urbannext.net/the-french-international-school-of-beijing-lfip/>



The canteen and the gym hall have been designed as pavilions in the orchard. Alongside the stadium, they add the finishing touches to a project which combines architecture and landscaping to create a remarkable, environmentally friendly place of learning. The metals used in the façades of these two buildings set up a play of reflections between the landscape and the built environment.

ISSN : 2575-5374



# urbanNext Lexicon

The French International School of Beijing (LFIP)  
<https://urbannext.net/the-french-international-school-of-beijing-lfip/>



ISSN : 2575-5374

# urbanNext Lexicon

The French International School of Beijing (LFIP)  
<https://urbannext.net/the-french-international-school-of-beijing-lfip/>



The matte finish of the wooden lattice around the main building interplays with the burnished surfaces of the gym hall and the canteen.

ISSN : 2575-5374



# urbanNext Lexicon

The French International School of Beijing (LFIP)  
<https://urbannext.net/the-french-international-school-of-beijing-lfip/>



With a contemporary character which avoids modish excesses, the French school takes a long-term view of design, leaving open various possibilities for development and new uses.

ISSN : 2575-5374



# urbanNext Lexicon

The French International School of Beijing (LFIP)  
<https://urbannext.net/the-french-international-school-of-beijing-lfip/>



ISSN : 2575-5374

# urbanNext Lexicon

The French International School of Beijing (LFIP)  
<https://urbannext.net/the-french-international-school-of-beijing-lfip/>

ISSN : 2575-5374