



TERRITORIAL ANTIFRAGILITY - PIANO DELL'ARENILE

Posted on January 14, 2026 by gaiapilia



Categories: [Energy and sustainability](#), [expanding design practices](#), [Felloni Lateral Office](#), [Formats](#), [Middle Density](#), [Project](#)

Tags: [Antifragile landscape](#), [antifragility as design method](#), [Climate Adaptation](#), [Coast](#), [coastal reclamation](#), [dunes](#), [dynamics](#), [ecocentric design](#), [Ecology](#), [ecotone territory](#), [evolution](#), [hyper-natural landscape](#), [incremental design](#), [Infrastructure](#), [Interface](#), [Landscape](#), [landscape resilience](#), [marsh](#), [Mediation](#), [nature-based solutions](#), [Po River](#), [process](#), [protection](#), [Regeneration](#), [Sedimentation](#), [territorial antifragility](#), [Territory](#)

urbanNext Lexicon

Territorial Antifragility - Piano Dell'Arenile
<https://urbannext.net/territorial-antifragility-piano-dellarenile/>

Antifragile Landscape is part of a research line aimed at territorial antifragility. We understand this attitude as a process of redefinition, in which critical conditions are interpreted as opportunities for growth and strengthening.



Ecotone territory

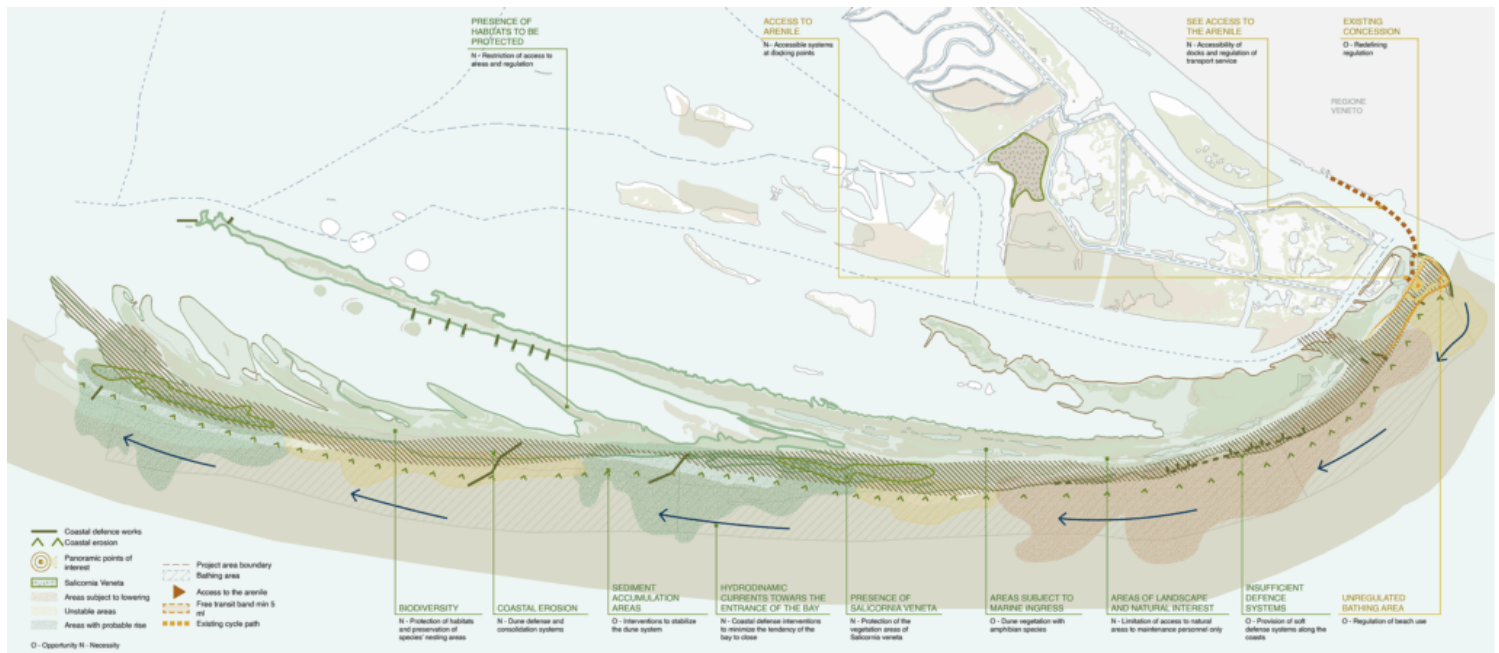
The project concerns an emerged salt marsh, formed in part through sediments and debris carried by the Po River. It is a territory suspended between sea, productive lagoon, and anthropized land—three sensitive landscapes that must preserve their existing relationships through the identification of potential, hidden portions of the landscape.

urbanNext Lexicon

Territorial Antifragility - Piano Dell'Arenile
<https://urbannext.net/territorial-antifragility-piano-dellarenile/>



ISSN : 2575-5374

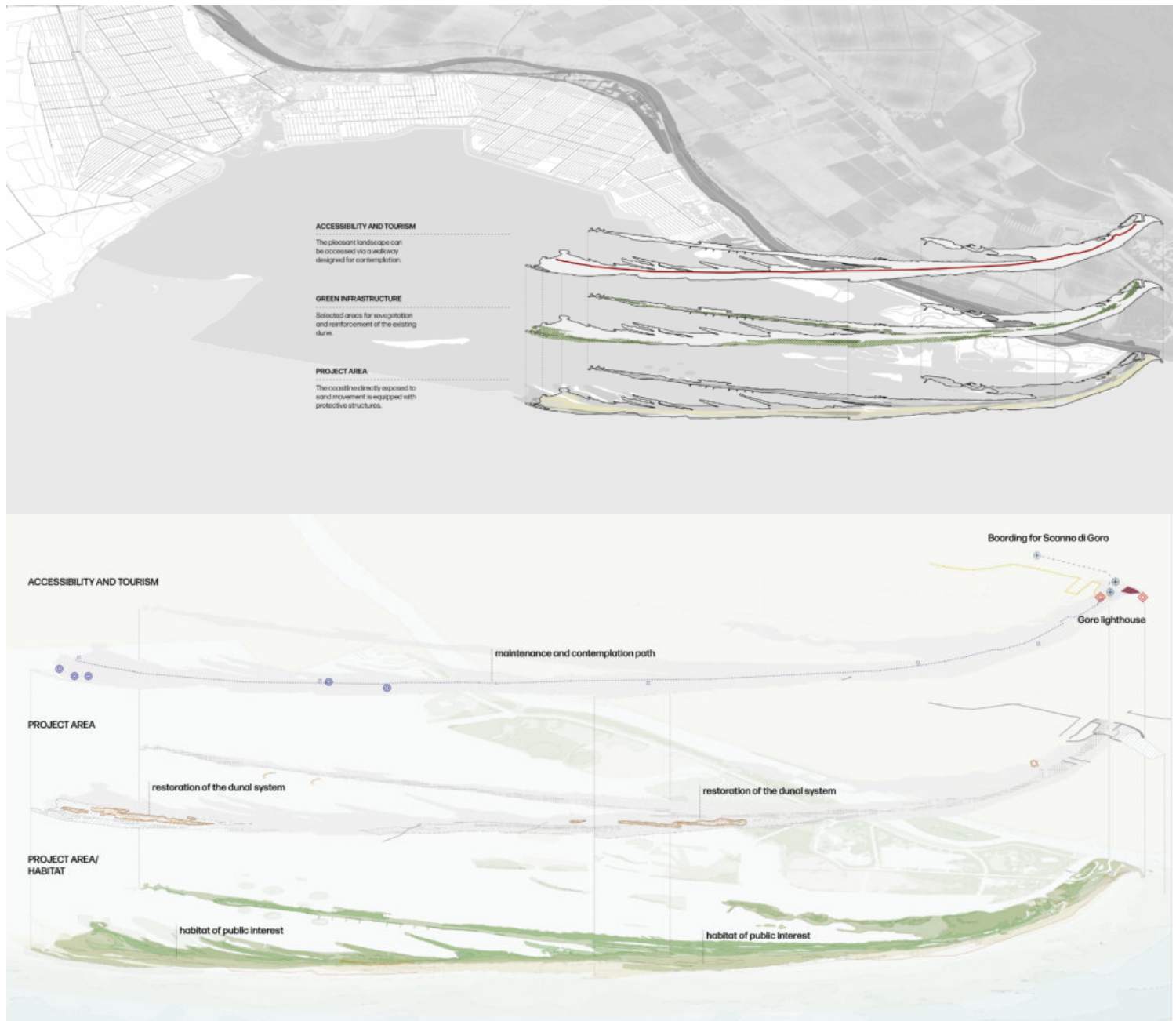


Antifragility as a design method

Antifragility, understood as the ability of a system to benefit from shocks, is the core principle of the design strategy. Through targeted actions such as the placement of sand-sedimentation nets, the Goro waterfront is reimagined as an evolutionary interface: a place where natural dynamics are not opposed but embraced to generate new balances. This is an incremental process over time, in which the sea nourishes the growth of native amphibious species. Marine nourishment increases their volume to protect the anthropized human territory, while simultaneously allowing its crossing through a contemplative fil rouge.

urbanNext Lexicon

Territorial Antifragility - Piano Dell'Arenile
<https://urbannext.net/territorial-antifragility-piano-dellarenile/>



From natural to hyper-natural

An evolution in the relationship between humans, nature, and the sea is introduced. Marginal areas are transformed into dynamic mediation spaces, capable of withstanding climate change and

ISSN : 2575-5374

urbanNext Lexicon

Territorial Antifragility - Piano Dell'Arenile
<https://urbannext.net/territorial-antifragility-piano-dellarenile/>

generating new centralities through anthropic induction, leading a natural landscape to evolve into a hyper-natural one.

The dune system is no longer a simple natural line, but a reinforced ecosystem that regenerates through the interaction between natural elements and targeted design interventions. In this perspective, human action is not imposed but calibrated, integrating into the rhythm of nature to generate a landscape that grows and evolves—transforming fragility into a resource, shifting from anthropocentrism to ecocentrism.



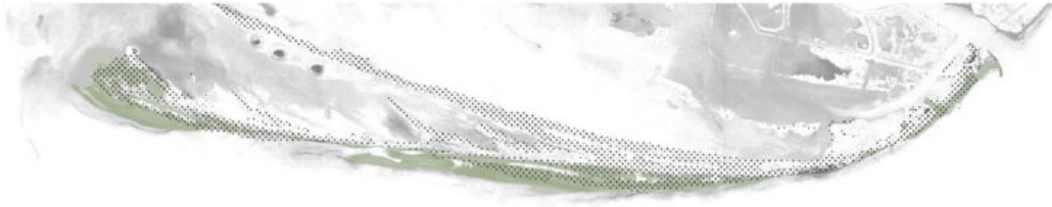
Severe erosion | 2004



Regeneration and accumulation | 2017



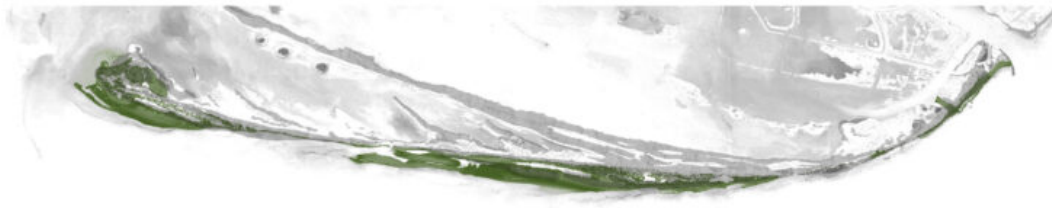
Severe erosion and marine incursion | 2022



Dune infrastructuring phase | 2027



Growth of vegetation on the dune | 2030



Reinforced dune | 2035

