



TEMPORARY SILINDOKULHE PRE-SCHOOL

Posted on November 15, 2017 by urbanNext



Categories: [africanCities](#), [Architizer](#), [Collectif SAGA](#), [Low Density](#), [Project](#), [Technology and fabrication](#)

Tags: [Africa](#), [africanCities](#), [Citizen interaction](#), [Cultural diversity](#), [Educational Building](#), [Facilities](#), [Lack of facilities](#), [Low budget](#), [Low-tech building](#), [NGO](#), [On Discourse and Practices](#), [Port Elizabeth](#), [Poverty line](#), [Project](#), [Raw materials](#), [Second life](#), [Sharing knowledge](#), [Social commitment](#), [Social contributor](#), [Social culture](#), [Social infrastructure](#), [South Africa](#), [Structural Plywood](#)

urbanNext Lexicon

Temporary Silindokulhe Pre-School

<https://urbannext.net/temporary-silindokulhe-pre-school/>

Joe Slovo is located on the outskirts of Port Elizabeth and is known as a township: one of a series of informal areas that were developed during Apartheid to host mostly poor black and colored communities. They are not dense areas and have usually developed rapidly with no real planning. Usually the municipality gives a plot to a family for free and they have free range to build what they like, as long as they respect the property limits. Access to water and electricity is limited, which makes the living conditions harsh.



ISSN : 2575-5374

urbanNext Lexicon

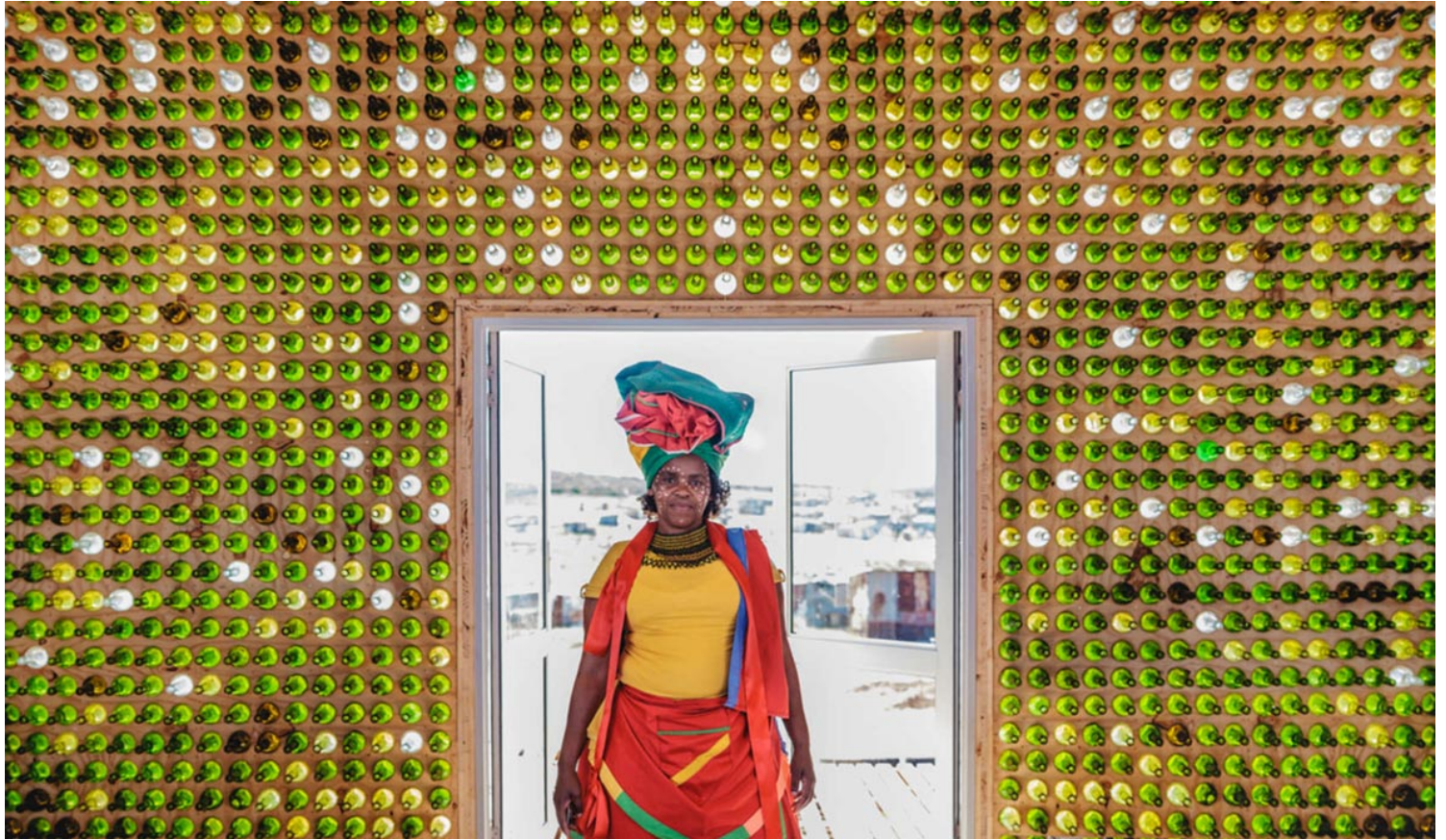
Temporary Silindokulhe Pre-School
<https://urbannext.net/temporary-silindokulhe-pre-school/>



ISSN : 2575-5374

urbanNext Lexicon

Temporary Silindokulhe Pre-School
<https://urbannext.net/temporary-silindokulhe-pre-school/>



ISSN : 2575-5374

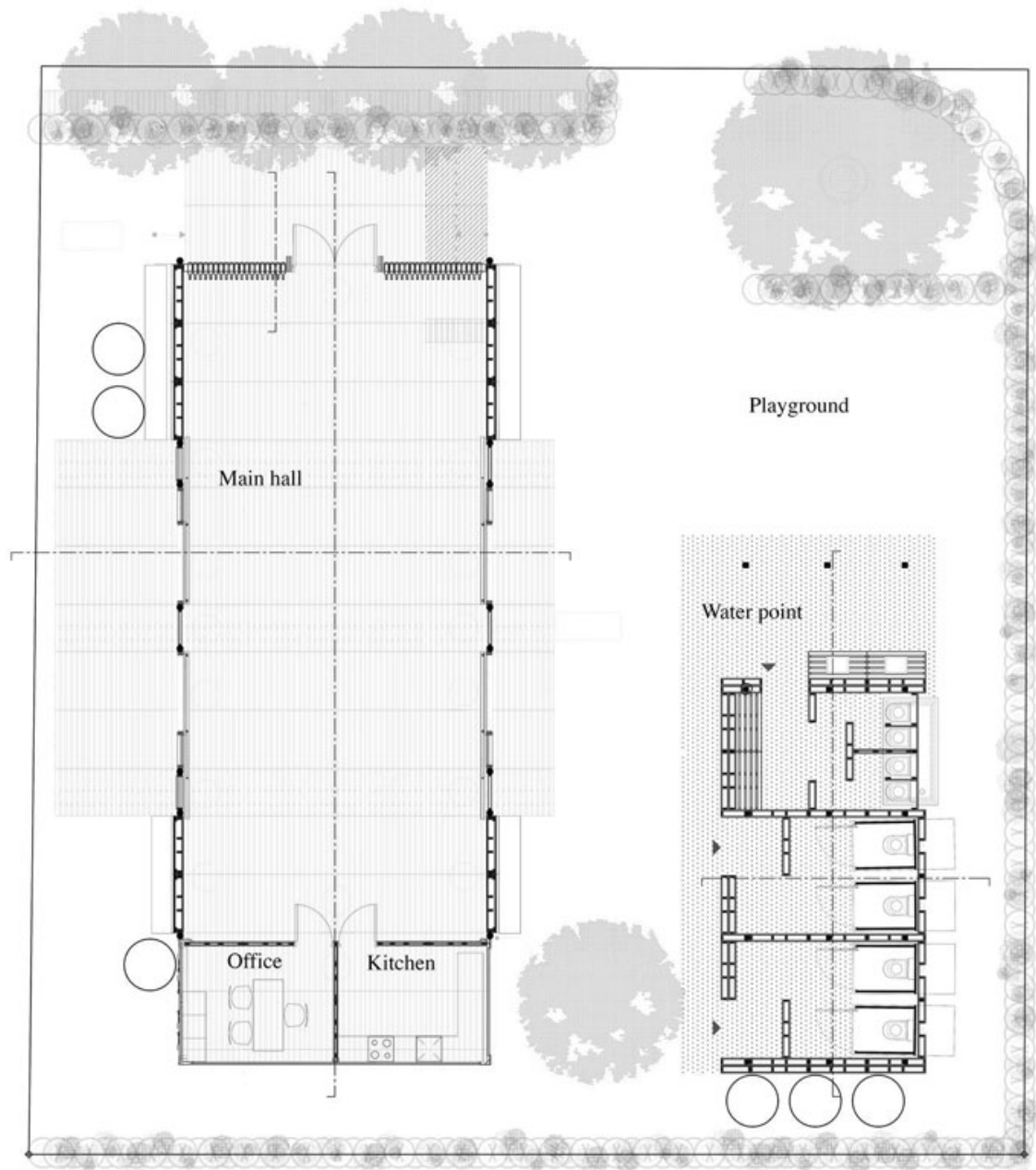


How do we do more with less?

With on average the same budget as an RDP house (houses built by the government) the project tries to show that by building in a different way we can offer the users better, bigger and more flexible spaces. Whereas an RDP house is on average 36m², the building we erected is 138m². This was made possible by using mostly recycled materials, which were mostly free or at reduced cost, and by establishing efficient building techniques.

urbanNext Lexicon

Temporary Silindokulhe Pre-School
<https://urbannext.net/temporary-silindokulhe-pre-school/>

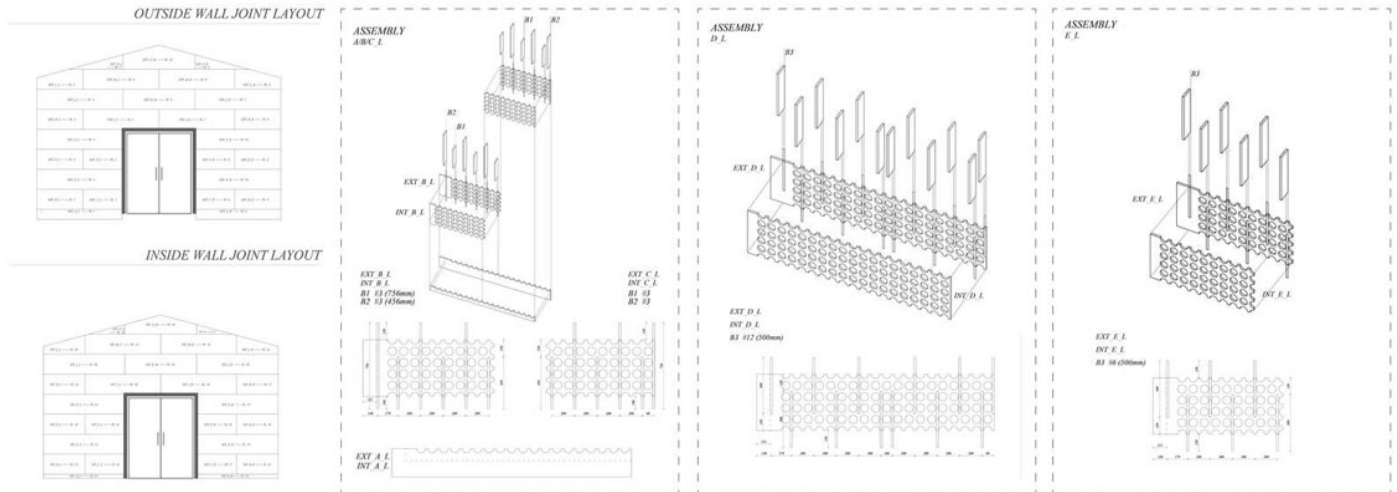


ISSN : 2575-5374

urbanNext Lexicon

Temporary Silindokulhe Pre-School
<https://urbannext.net/temporary-silindokulhe-pre-school/>

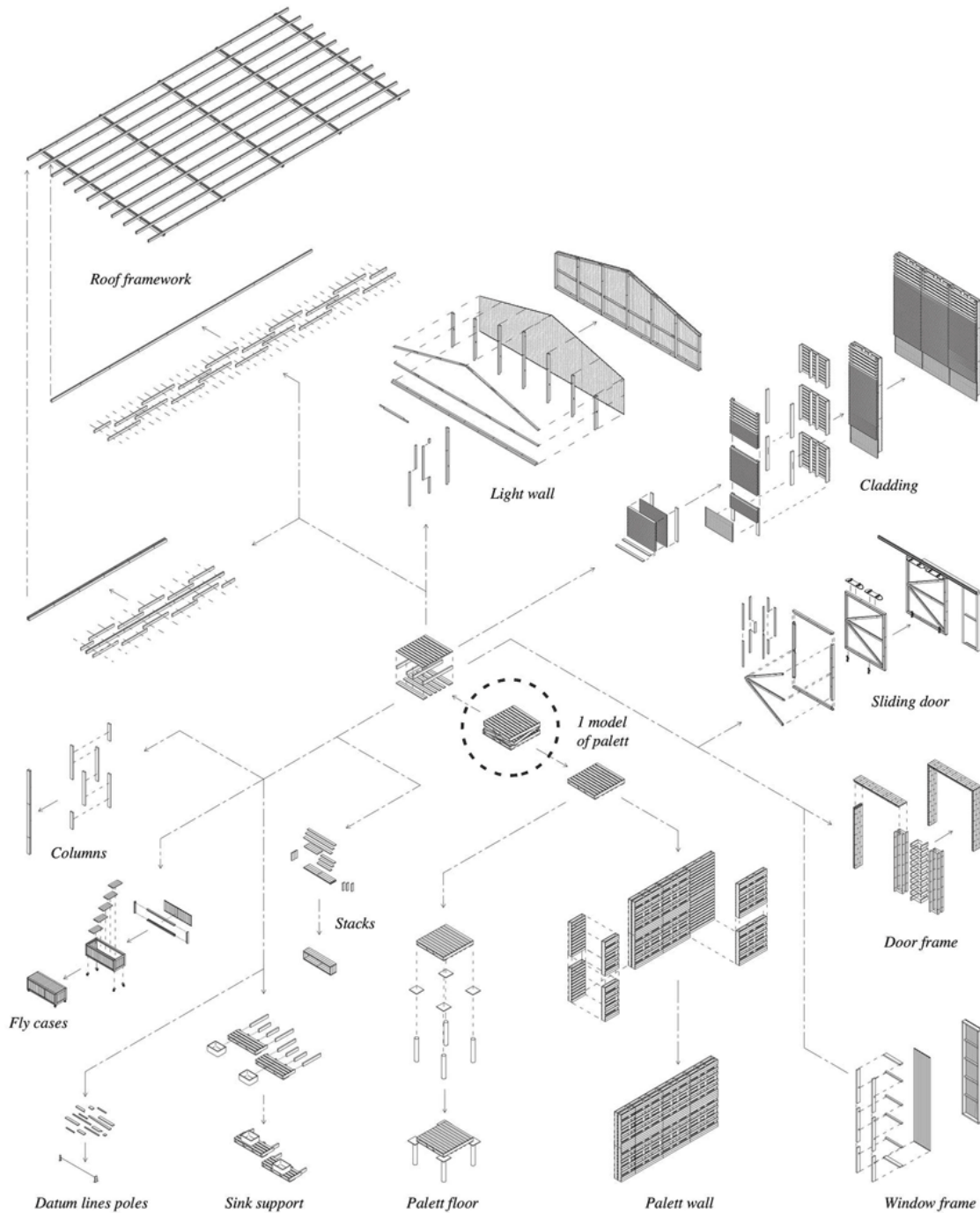
Plan



ISSN : 2575-5374

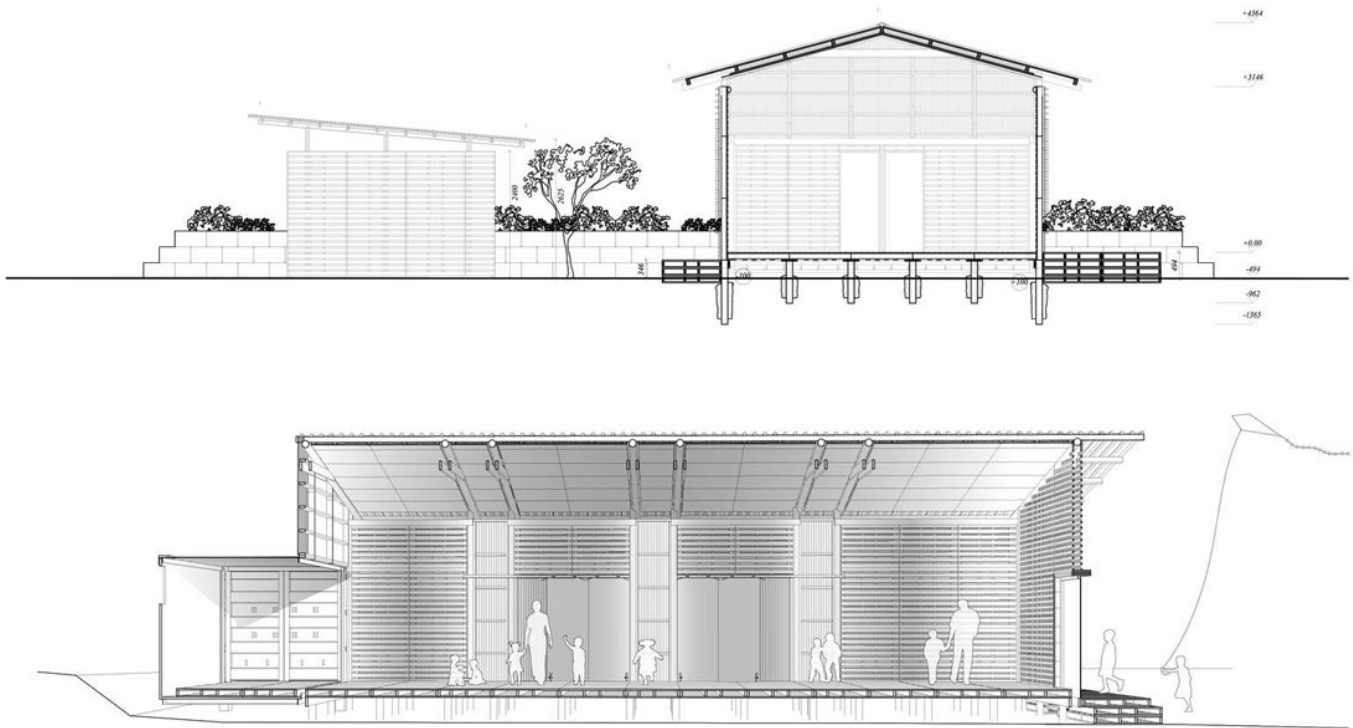
urbanNext Lexicon

Temporary Silindokulhe Pre-School
<https://urbannext.net/temporary-silindokulhe-pre-school/>



ISSN : 2575-5374

Diagrams



Sections

urbanNext Lexicon

Temporary Silindokulhe Pre-School
<https://urbannext.net/temporary-silindokulhe-pre-school/>



ISSN : 2575-5374

urbanNext Lexicon

Temporary Silindokulhe Pre-School
<https://urbannext.net/temporary-silindokulhe-pre-school/>



ISSN : 2575-5374

urbanNext Lexicon

Temporary Silindokulhe Pre-School
<https://urbannext.net/temporary-silindokulhe-pre-school/>



ISSN : 2575-5374

urbanNext Lexicon

Temporary Silindokulhe Pre-School
<https://urbannext.net/temporary-silindokulhe-pre-school/>



Under Construction

ISSN : 2575-5374

urbanNext Lexicon

Temporary Silindokulhe Pre-School
<https://urbannext.net/temporary-silindokulhe-pre-school/>



ISSN : 2575-5374

urbanNext Lexicon

Temporary Silindokulhe Pre-School
<https://urbannext.net/temporary-silindokulhe-pre-school/>



ISSN : 2575-5374

urbanNext Lexicon

Temporary Silindokulhe Pre-School
<https://urbannext.net/temporary-silindokulhe-pre-school/>



ISSN : 2575-5374

urbanNext Lexicon

Temporary Silindokulhe Pre-School
<https://urbannext.net/temporary-silindokulhe-pre-school/>



ISSN : 2575-5374



Knowledge sharing

The second goal of the project was to try to develop simple and repeatable processes, which would give the community the tools and knowledge to reproduce these processes for their own development. We decided to use similar materials to what they use for construction (pallets, corrugated sheet metal, tires etc.). Those were then transformed in order to make a durable, solid building with significant architectural value. We also involved a few members of the community throughout the process in order to continuously share this knowledge. It was a two-way knowledge

urbanNext Lexicon

Temporary Silindokulhe Pre-School
<https://urbannext.net/temporary-silindokulhe-pre-school/>

exchange, in the sense that we have a lot to learn from a community that builds and rebuilds every day using limited resources from the surrounding environment.



ISSN : 2575-5374

urbanNext Lexicon

Temporary Silindokulhe Pre-School
<https://urbannext.net/temporary-silindokulhe-pre-school/>



ISSN : 2575-5374

urbanNext Lexicon

Temporary Silindokulhe Pre-School
<https://urbannext.net/temporary-silindokulhe-pre-school/>



ISSN : 2575-5374

urbanNext Lexicon

Temporary Silindokulhe Pre-School
<https://urbannext.net/temporary-silindokulhe-pre-school/>



ISSN : 2575-5374

urbanNext Lexicon

Temporary Silindokulhe Pre-School
<https://urbannext.net/temporary-silindokulhe-pre-school/>

ISSN : 2575-5374