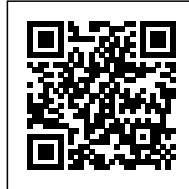




TELETON

Posted on May 31, 2016 by Urban UrbanNext



Categories: [expanding design practices](#), [Gabinete de Arquitectura](#), [Middle Density](#), [Politics and economics](#), [Project](#), [Southern Coexistences](#), [Technology and fabrication](#)

Tags: [Asunción](#), [Brick](#), [Construction](#), [Expanding frontiers](#), [Facilities](#), [Lambare](#), [Latin America](#), [Materials](#), [Natural materials](#), [Paraguay](#), [Political & Economic Approach](#), [Project](#), [Purity](#), [Refurbishment](#), [Searches on scales](#), [Second life](#), [Structure](#), [Technological Approach](#)

The Telethon Children's Rehabilitation Center in Paraguay is 30 years old. Over the years the fate of the institution fate has gone hand in hand with the country where it is headquartered. Neglect, corruption and discouragement have been stages to overcome on the road to recovering and revitalizing its important social function.

urbanNext Lexicon

TELETON

<https://urbannext.net/teleton/>



ISSN : 2575-5374

urbanNext Lexicon

TELETON

<https://urbannext.net/teleton/>



ISSN : 2575-5374

urbanNext Lexicon

TELETON

<https://urbannext.net/teleton/>



ISSN : 2575-5374

urbanNext Lexicon

TELETON
<https://urbannext.net/teleton/>



ISSN : 2575-5374

urbanNext Lexicon

TELETON

<https://urbannext.net/teleton/>



ISSN : 2575-5374

urbanNext Lexicon

TELETON

<https://urbannext.net/teleton/>



ISSN : 2575-5374

urbanNext Lexicon

TELETON

<https://urbannext.net/teleton/>



ISSN : 2575-5374

urbanNext Lexicon

TELETON

<https://urbannext.net/teleton/>



ISSN : 2575-5374

urbanNext Lexicon

TELETON

<https://urbannext.net/teleton/>



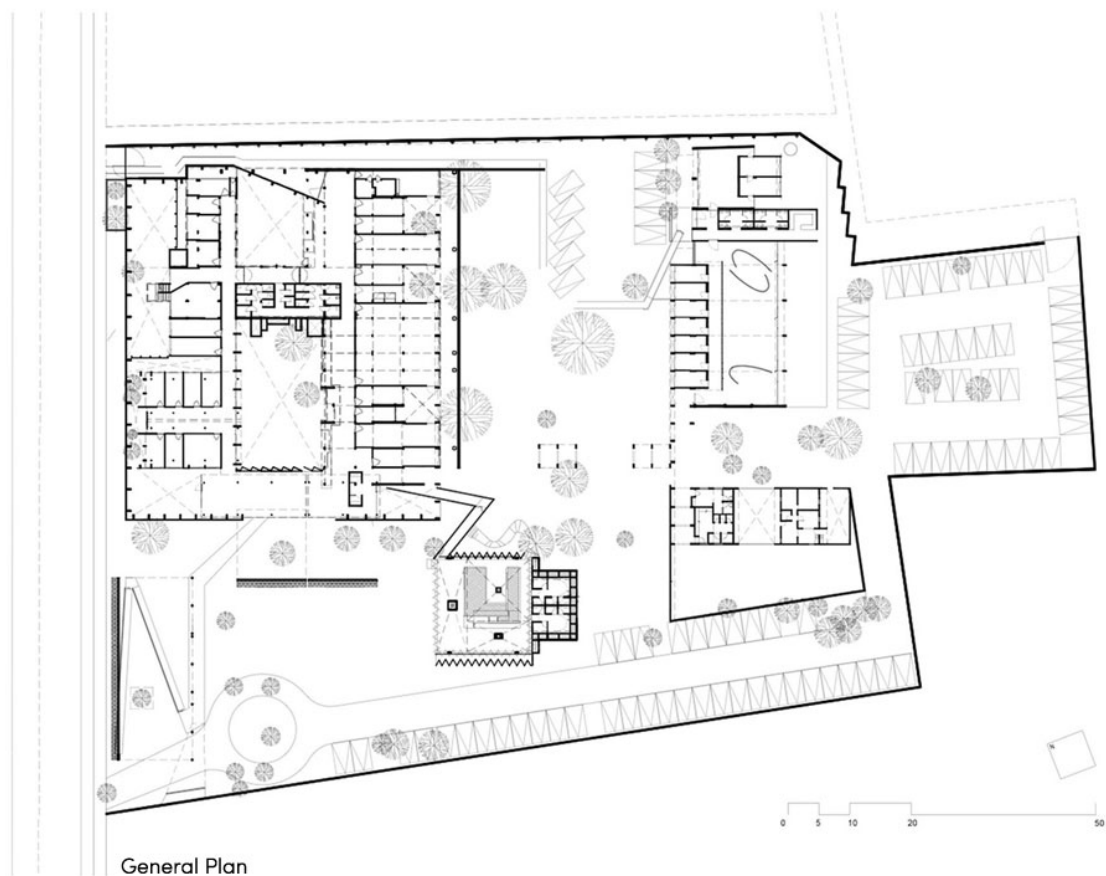
ISSN : 2575-5374

urbanNext Lexicon

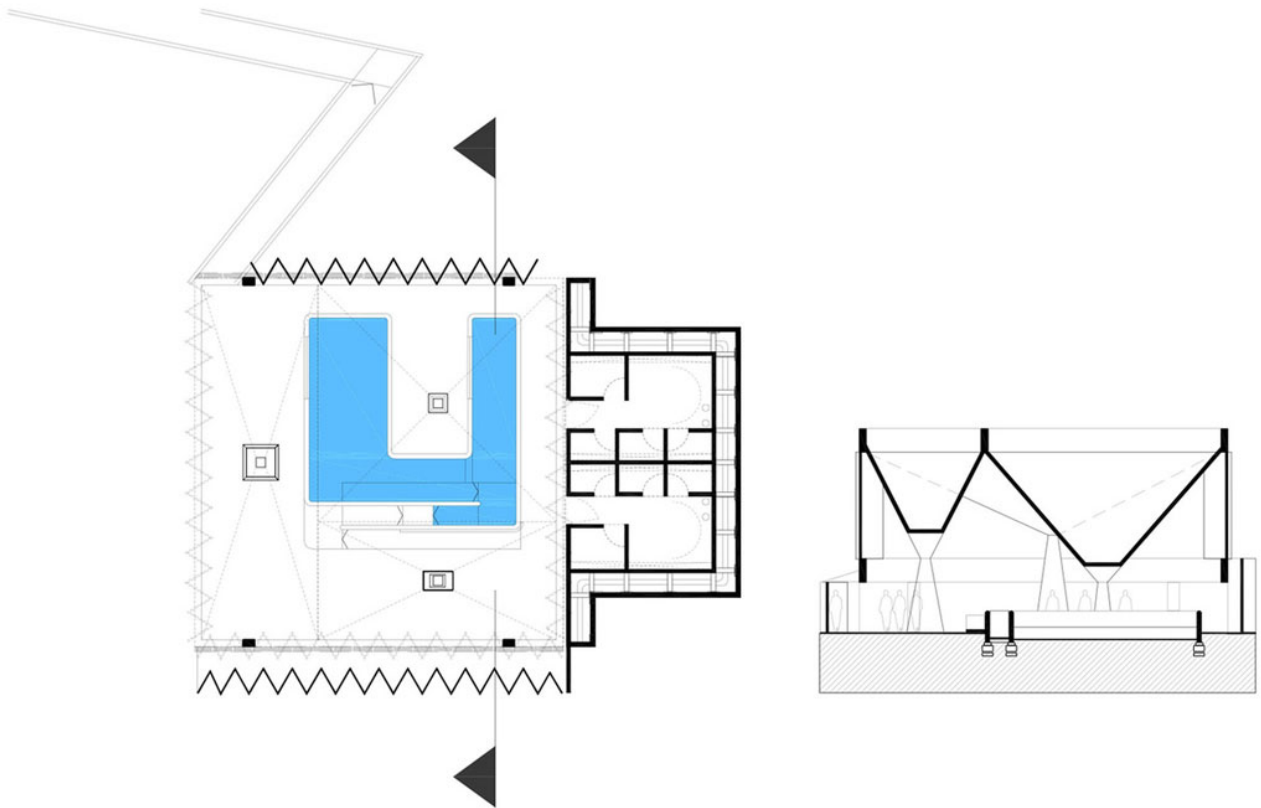
TELETON

<https://urbannext.net/teleton/>

Telethon Rehabilitation Centers (CRIT) are built and put into service based on a single fundraising event, which takes place annually via a telethon. Every brick used in the project is the result of a social donation. In that sense, a whole series of constructions are necessary in bringing them to life: the construction that uses bricks, which depends our professional practice; the construction of the institution, which we contribute to with our creativity and imagination; and the social construction that fights against apathy and distrust. An initial phase demolished walls, broke down barriers and erased prejudices. Now it's time to open doors, give a warm welcome, and take people in.



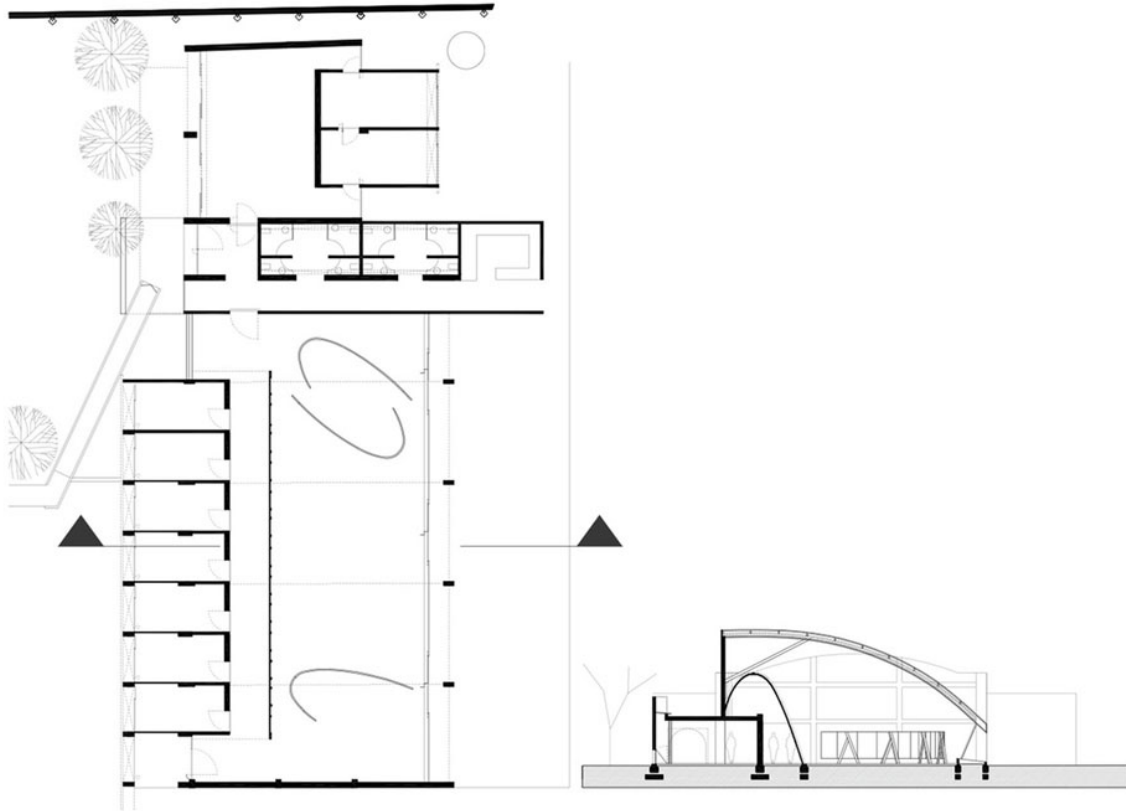
ISSN : 2575-5374



Pool Plan

urbanNext Lexicon

TELETON
<https://urbannext.net/teleton/>



Plan & Cross Section

ISSN : 2575-5374

