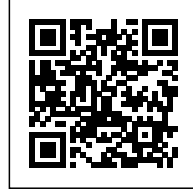




SON GANXO HOUSE

Posted on January 7, 2017 by urbanNext



Categories: [F451](#), [Low Density](#), [Middle Density](#), [Project](#), [Sio2](#), [Territory and mobility](#)

Tags: [Built landscape](#), [Coast](#), [Coast line](#), [Menorca](#), [Private housing](#), [Project](#), [Singular Housing](#), [Spain](#), [Territorial Approach](#), [Topography](#)

urbanNext Lexicon

Son Ganxo House

<https://urbannext.net/son-ganxo-house/>

This house belongs to a set of projects developed by Sio2 that reformulates the type of the single-family house through the integration with the landscape. In these works, we experimented with roofs as organizing systems and we avoided the traditional role of facades as compositional mechanisms.



ISSN : 2575-5374

urbanNext Lexicon

Son Ganxo House
<https://urbannext.net/son-ganxo-house/>



ISSN : 2575-5374

urbanNext Lexicon

Son Ganxo House

<https://urbannext.net/son-ganxo-house/>



ISSN : 2575-5374

urbanNext Lexicon

Son Ganxo House

<https://urbannext.net/son-ganxo-house/>

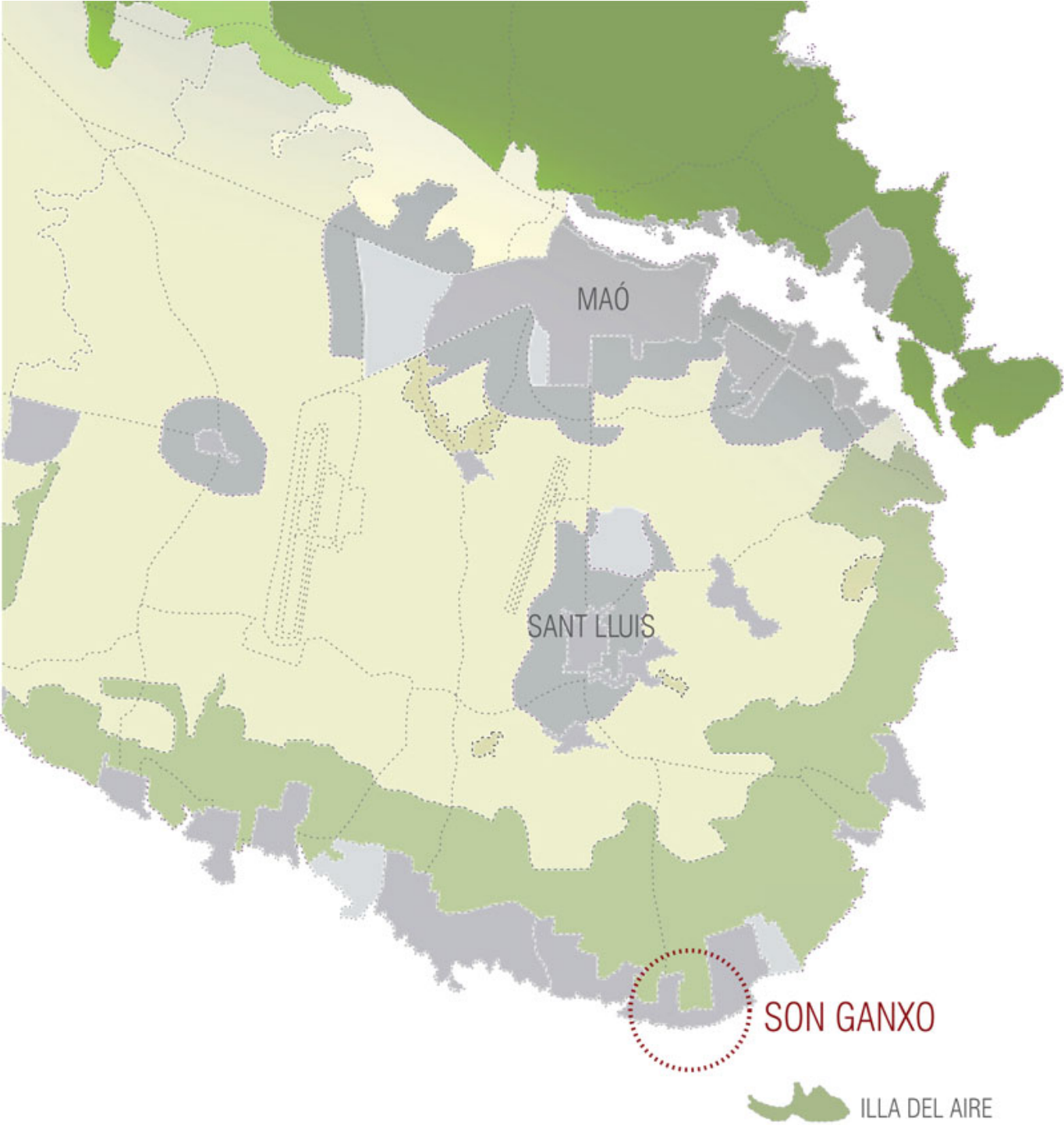


In this iteration, the house is articulated as a landscape extension of an existing topography. The volume is placed in such a way that the roof becomes an artificial terrain. The house becomes a vegetal platform with variable geometry that opens the views towards the sea with no frontal expression towards the street. The relation with the existing slope allows a pedestrian access from the higher part of the plot and a vehicular access from the lower part.

ISSN : 2575-5374

urbanNext Lexicon

Son Ganxo House
<https://urbannext.net/son-ganxo-house/>



ISSN : 2575-5374

Siteplan

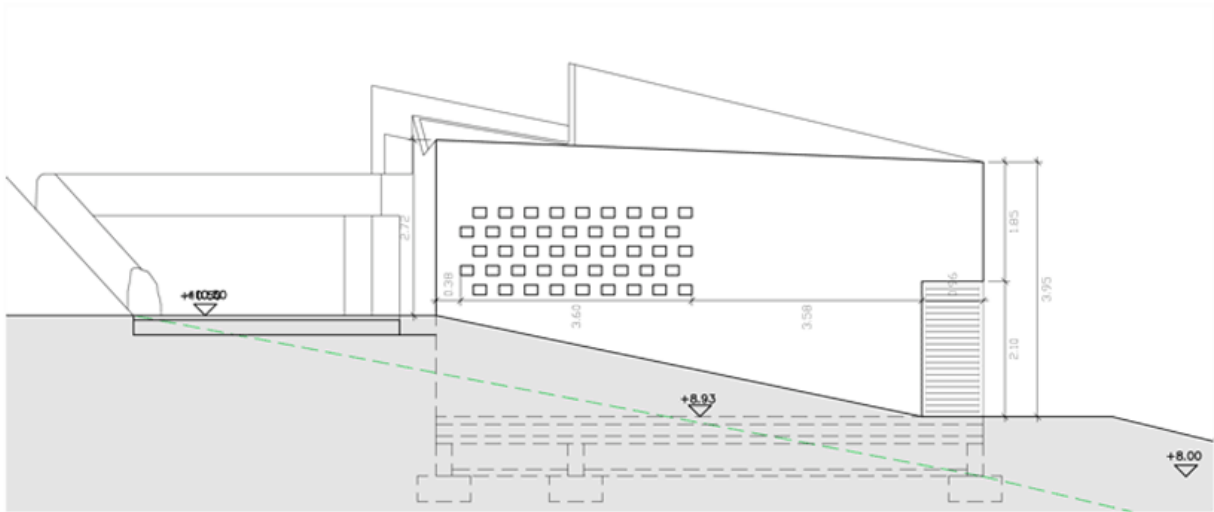
urbanNext Lexicon

Son Ganxo House
<https://urbannext.net/son-ganxo-house/>

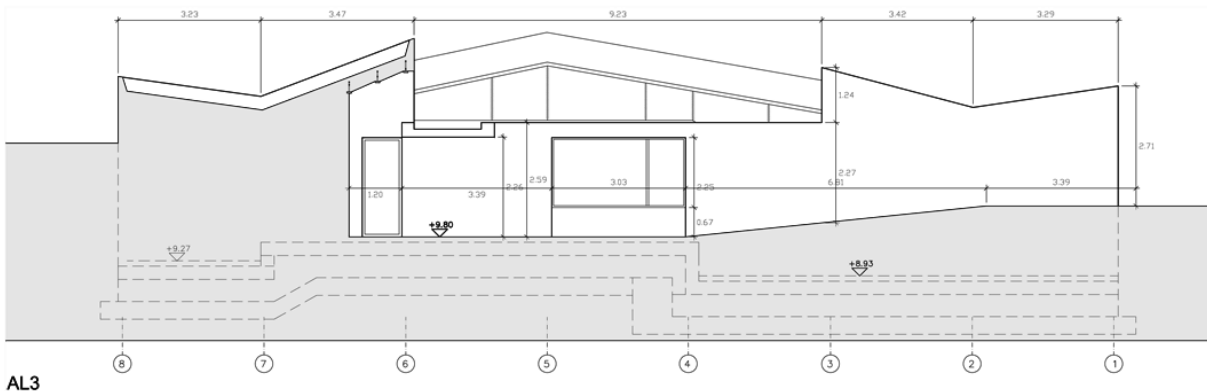


ISSN : 2575-5374

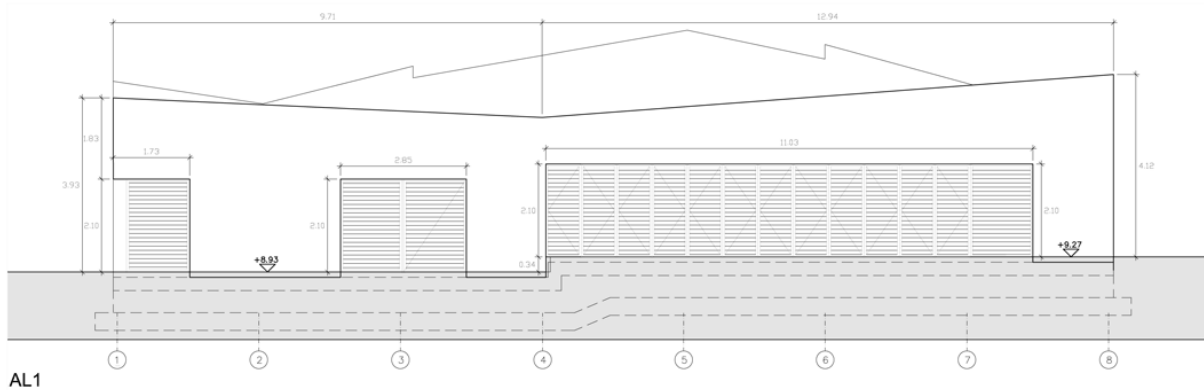
Plans



AL2



AL3



Elevations & Sections

The house is organized under a single green roof. The form of this surface responds to the negotiation between topographic relations, construction technology constraints, raining water collection, and different spatial needs of parts of the interior. As a result, architecture projects polygonal geometry to the exterior, tensing the landscape, and smooths the interior, naturalizing the domestic.

urbanNext Lexicon

Son Ganxo House
<https://urbannext.net/son-ganxo-house/>



ISSN : 2575-5374

urbanNext Lexicon

Son Ganxo House

<https://urbannext.net/son-ganxo-house/>



ISSN : 2575-5374

urbanNext Lexicon

Son Ganxo House
<https://urbannext.net/son-ganxo-house/>



ISSN : 2575-5374

urbanNext Lexicon

Son Ganxo House
<https://urbannext.net/son-ganxo-house/>



ISSN : 2575-5374

urbanNext Lexicon

Son Ganxo House
<https://urbannext.net/son-ganxo-house/>

ISSN : 2575-5374