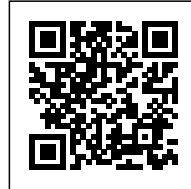




SMILEY

Posted on October 22, 2016 by urbanNext



Categories: [Middle Density](#), [Project](#), [Studioninedots](#), [Technology and fabrication](#), [Territory and mobility](#)

Tags: [Adaptive system](#), [Amsterdam](#), [Brick](#), [Citizen interaction](#), [City dialogue](#), [Collective housing](#), [Community Facilities](#), [Educational Building](#), [Facilities](#), [Interactive building](#), [Project](#), [Social cohesion](#), [Social culture](#), [Social infrastructure](#), [Territorial Approach](#), [The Netherlands](#), [Zeeburgereiland](#)

urbanNext Lexicon

Smiley

<https://urbannext.net/smiley/>

On Zeeburgereiland in Amsterdam, right before the Piet Hein tunnel, a growing student population has been livening up the area. There, Studioninedots designed an iconic block with 364 student apartments. Passersby this summer caught glimpses of the first residents enjoying the sunshine on the shared terraces that form the stepped roof.



ISSN : 2575-5374



Zeeburgereiland is rapidly developing into an urbanised part of Amsterdam, and the city-wide demand for student housing is addressed here on the 134-metre-long site on IJburglaan. Studioninedots utilised the organisation of the outdoor spaces as a way to facilitate a collective culture and the dynamic use of the building. A major strategy relocated the terrace, which was originally allocated on the quiet but unattractive north side of the building, to the roof.

urbanNext Lexicon

Smiley

<https://urbannext.net/smiley/>



ISSN : 2575-5374

urbanNext Lexicon

Smiley

<https://urbannext.net/smiley/>



ISSN : 2575-5374

urbanNext Lexicon

Smiley

<https://urbannext.net/smiley/>



ISSN : 2575-5374

urbanNext Lexicon

Smiley

<https://urbannext.net/smiley/>



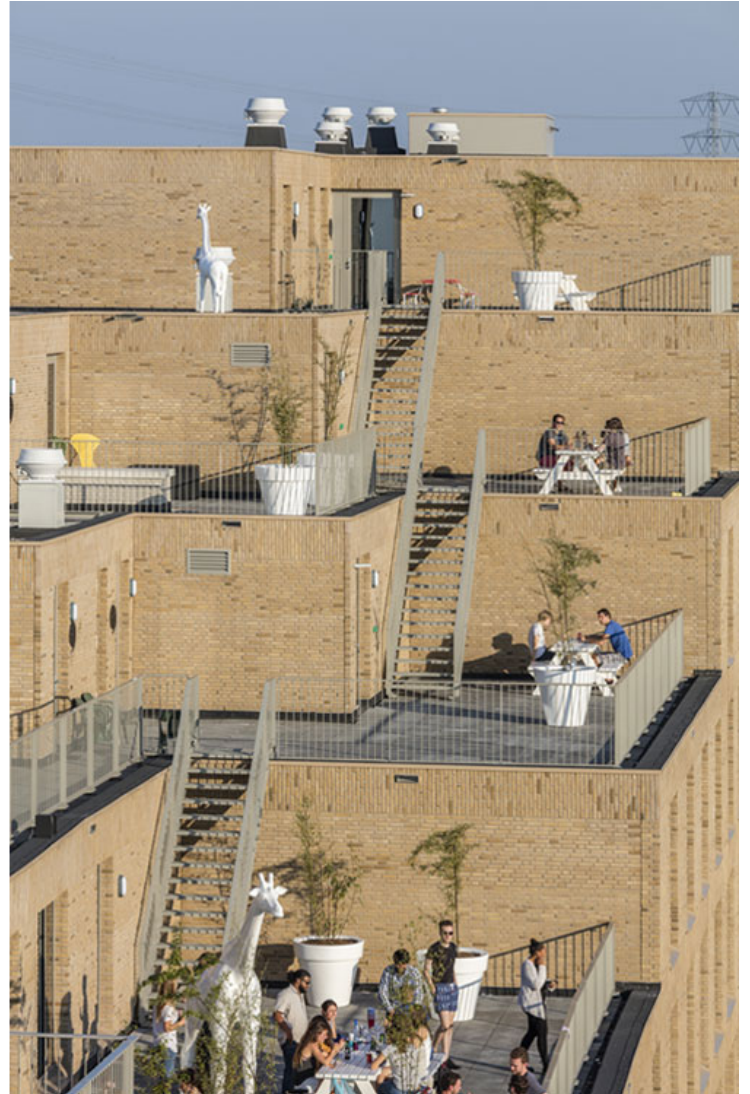
By stepping the block down southwards, this created space for shared terraces, allowed for variety in the apartment layouts and formed an iconic urban silhouette. The clever positioning of the stepped terraces enables the building to function as a barrier against traffic noise for the residences behind.

ISSN : 2575-5374

urbanNext Lexicon

Smiley

<https://urbannext.net/smiley/>

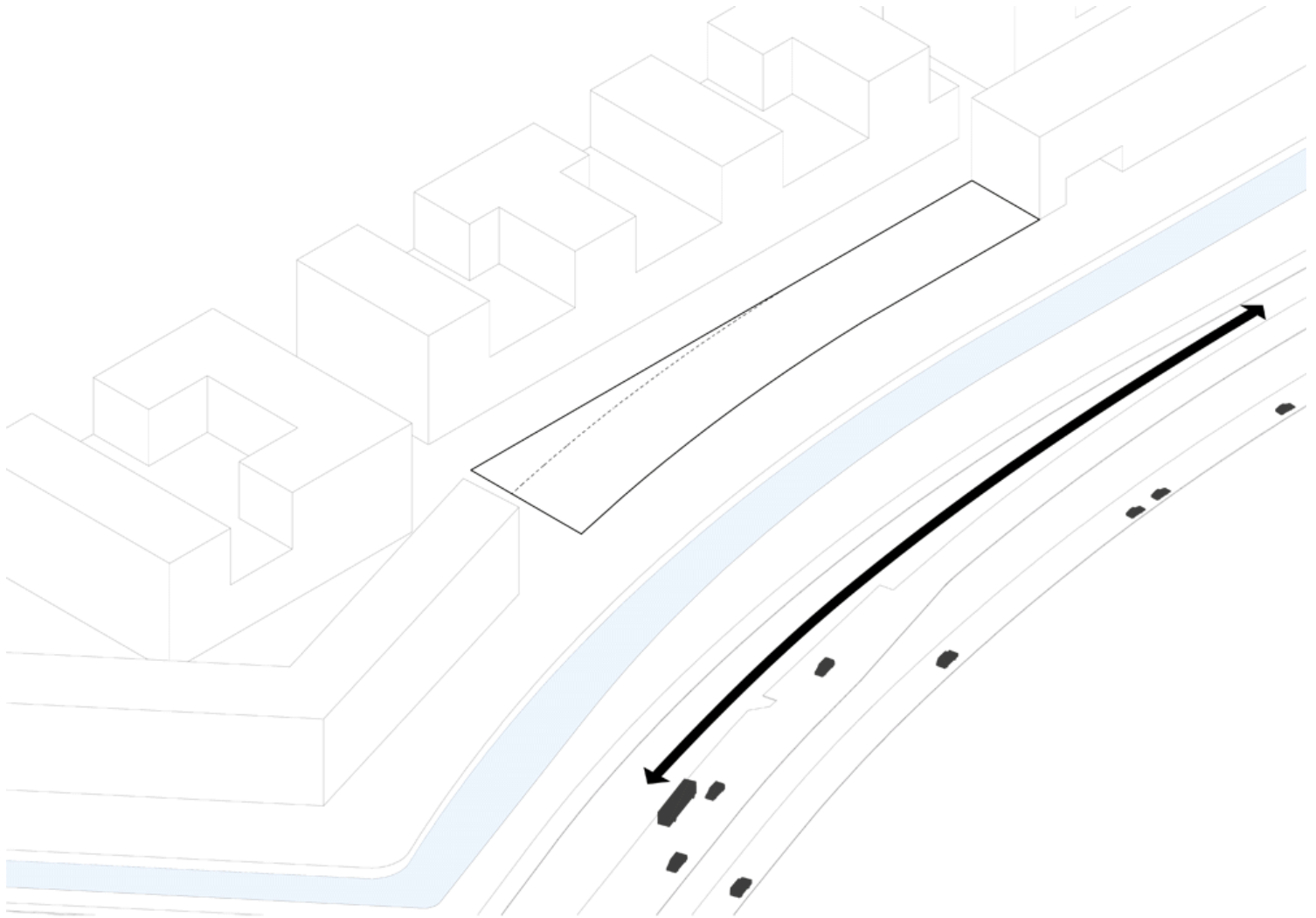


Double height glass entrances mark the access to the apartments. Complementing the roof terraces is a green zone that lines the front façade, filled with hollyhocks that lean against the brick piers. The terraces of the ground floor apartments open onto this area. The dimensions of the piers vary, widening towards the centre of the building, which appears as a triptych. Each with its own rhythmic quality, together the different sections accentuate the overall upturned form: the building's smile.

ISSN : 2575-5374

urbanNext Lexicon

Smiley
<https://urbannext.net/smiley/>



Schemas

ISSN : 2575-5374

urbanNext Lexicon

Smiley
<https://urbannext.net/smiley/>



Plans

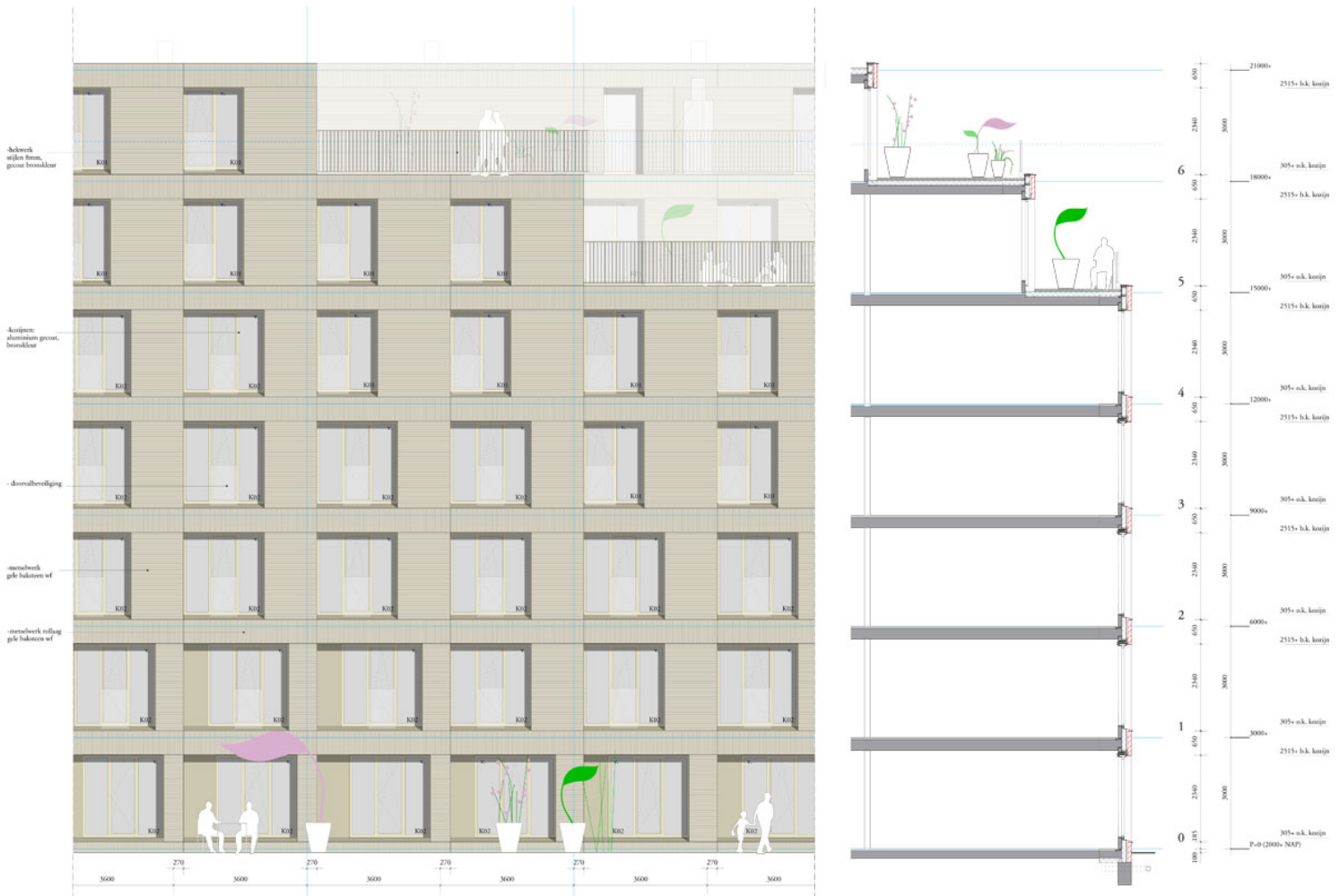


Elevation

urbanNext Lexicon

Smiley

<https://urbannext.net/smiley/>



Elevation & Section Detail

Our cities are becoming more compact. In this context Studioninedots sees an increasing need for better collective spaces and public spaces. Its architecture creates characteristic spatial interventions on dense urban sites that function as catalysts for meeting, exchange, connection and activities between people – in this case, between students.

ISSN : 2575-5374

urbanNext Lexicon

Smiley

<https://urbannext.net/smiley/>



ISSN : 2575-5374

urbanNext Lexicon

Smiley

<https://urbannext.net/smiley/>

ISSN : 2575-5374