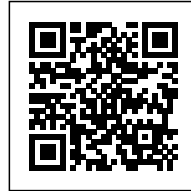




SKÄRVET ELDERLY CARE HOME

Posted on October 8, 2020 by martabuges



Categories: [Kjellander Sjöberg](#), [Middle Density](#), [Project](#), [Technology and fabrication](#), [Urban Paradigms](#)

Tags: [Architecture](#), [Community](#), [Community Facilities](#), [Construction](#), [Courtyard](#), [Façade](#), [Greenery](#), [Greenhouse](#), [Interstitial Space](#), [LEED](#), [Leisure](#), [Open Space](#), [Performative Envelope](#), [Prefabrication](#), [Project](#), [Rooftop](#), [Social contributor](#), [Sweden](#), [Well-being](#)

urbanNext Lexicon

Skärvet Elderly Care Home
<https://urbannext.net/skarvet/>

The elderly care home is a part of the Skärvet city block, which is the starting point of Bäckaslöv, a new urban district in Växjö being developed along the railway connecting the city center to the Norra Bergundasjön lake. The L- shaped building is the first phase and the cornerstone of the city block, offering mixed forms of tenure around a spacious, shared courtyard.

ISSN : 2575-5374

urbanNext Lexicon

Skärvet Elderly Care Home
<https://urbannext.net/skarvet/>

ISSN : 2575-5374



Common Areas with Good Light Conditions

The layout is based on arranging all common and neutral areas into a central hub with individual departments located in each respective wing. The core of each department is its dining and living room, an open space reaching from façade to façade. Its large windows and tall ceiling heights provide great daylight conditions.

urbanNext Lexicon

Skärvet Elderly Care Home
<https://urbannext.net/skarvet/>

ISSN : 2575-5374

urbanNext Lexicon

Skärvet Elderly Care Home
<https://urbannext.net/skarvet/>



ISSN : 2575-5374

urbanNext Lexicon

Skärvet Elderly Care Home
<https://urbannext.net/skarvet/>

ISSN : 2575-5374



Spaces for Social Interaction

The common functions comprise an assembly hall, a conservatory, a facility for physical therapy, and a greenhouse on the rooftop with a view over the shared courtyard and the green recreation space.

urbanNext Lexicon

Skärvet Elderly Care Home
<https://urbannext.net/skarvet/>

ISSN : 2575-5374

urbanNext Lexicon

Skärvet Elderly Care Home
<https://urbannext.net/skarvet/>

ISSN : 2575-5374



Lively Façades

The design and configuration are strongly linked to the construction process. The variation in the façade is achieved rationally by using more joints than façade elements and by combining four sections of different types of tile patterns. The overall design thus resembles a textile pattern or a crocheted tablecloth. Entrances, windows and roofs are accentuated by copper-colored metal sheets, adding warmer tones. The building is designed to achieve LEED Platinum certificate and

urbanNext Lexicon

Skärvet Elderly Care Home
<https://urbannext.net/skarvet/>

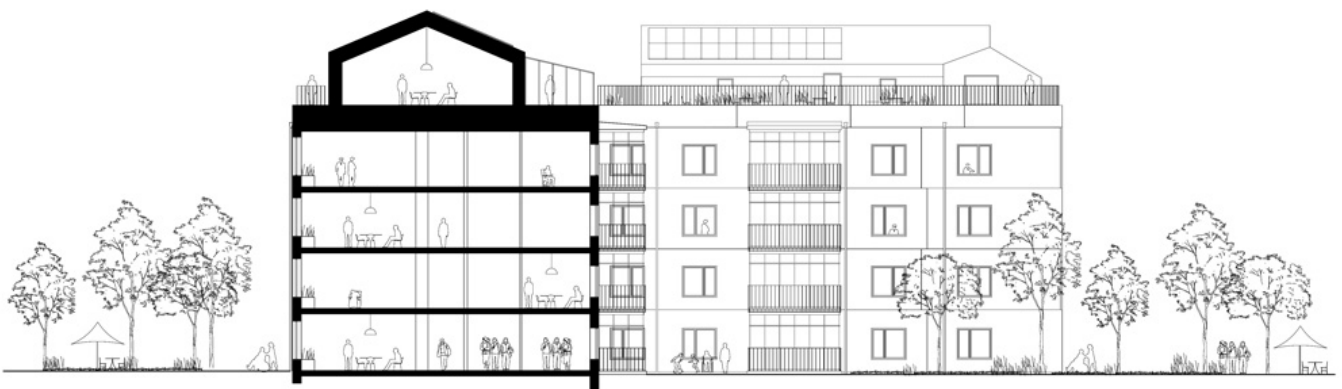
Skanska's top-level environmental classification.



ISSN : 2575-5374

urbanNext Lexicon

Skärvet Elderly Care Home
<https://urbannext.net/skarvet/>



ISSN : 2575-5374

urbanNext Lexicon

Skärvet Elderly Care Home
<https://urbannext.net/skarvet/>

ISSN : 2575-5374