



SARA WEILL-RAYNAL NURSING HOME

Posted on June 16, 2022 by xavigonzalez



Categories: [Avenier Cornejo](#), [Contributors](#), [Densities](#), [Formats](#), [Middle Density](#), [Project](#), [Technology and fabrication](#), [Topics](#)

Tags: [Brick](#), [Circulation](#), [City living](#), [Comfort](#), [Density](#), [Facilities](#), [France](#), [Health](#), [Interior design](#), [Paris](#), [Project](#), [Refurbishment](#), [Renovation](#), [Residential](#), [Urban conditions](#), [Well-being](#)

urbanNext Lexicon

Sara Weill-Raynal Nursing Home

<https://urbannext.net/sara-weill-raynal-nursing-home/>

Revelations about living conditions in certain nursing homes have made elderly care into a burning issue. In this troubled context, the refurbishment of the Sara Weill-Raynal facility by Avenier Cornejo offers spatial responses that improve the lives of both residents and care staff.



The renovation is one of the construction and restructuring initiatives carried out by the Centre

ISSN : 2575-5374

urbanNext Lexicon

Sara Weill-Raynal Nursing Home
<https://urbannext.net/sara-weill-raynal-nursing-home/>

d'Action Sociale de la Ville de Paris (CASVP) whose aim is to improve the quality of care facilities across Paris.



Increasing the volume of the building within the constraints of local planning regulations, with setbacks on the fifth and sixth floors, has made it possible to add 460 sq.m. of floor area and to increase the number of resident rooms from 89 to 94. The presence of a protected green space

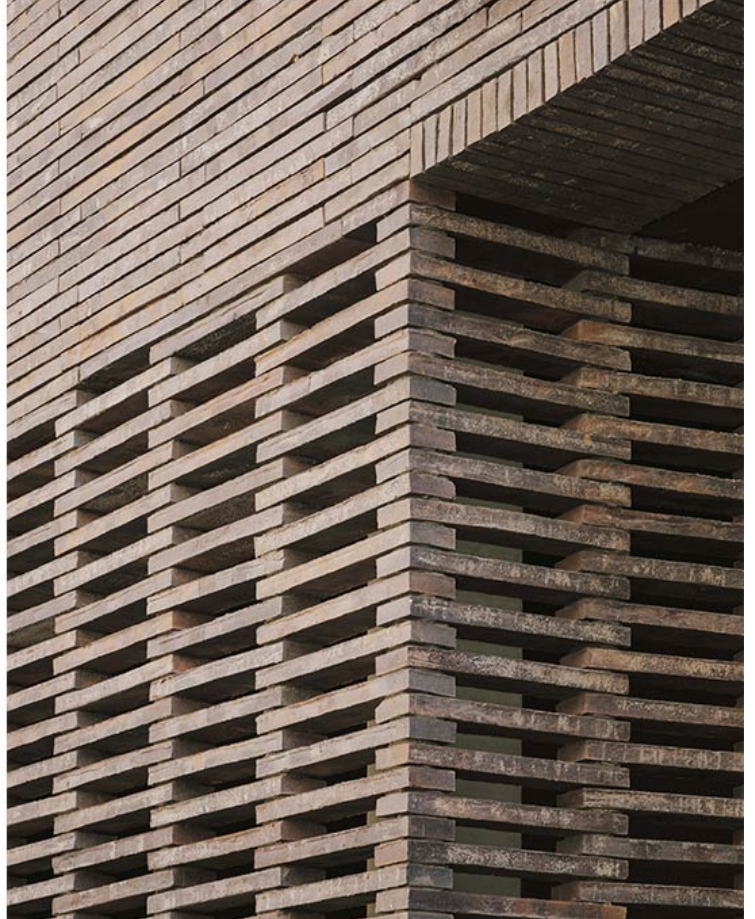
ISSN : 2575-5374

urbanNext Lexicon

Sara Weill-Raynal Nursing Home

<https://urbannext.net/sara-weill-raynal-nursing-home/>

made increasing the built volume impossible on the garden side.

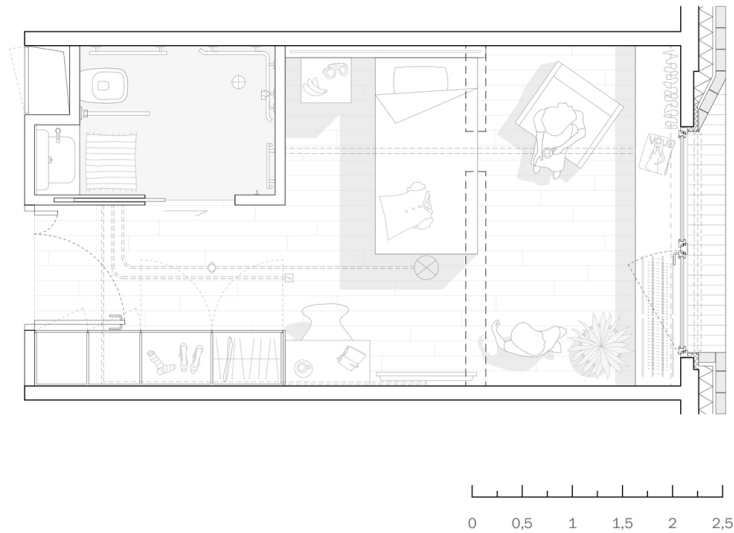


The interior has been redesigned to adapt to the new requirements of the program, placing the human dimension at the heart of the project. As in a family home, the dining rooms are places to meet and mingle. Central and open to the horizontal circulation areas, they are friendly and bright, encouraging residents to use them for group activities. Wellbeing is a central concern, with ergonomically designed rooms and facilities bringing residents and carers all the comfort they need.

ISSN : 2575-5374

urbanNext Lexicon

Sara Weill-Raynal Nursing Home
<https://urbannext.net/sara-weill-raynal-nursing-home/>



The generously proportioned windows, equipped with sunshades, bring in natural light and maintain a connection with the city while protecting residents' privacy. This dialogue with the urban surroundings is also embodied by the façade, which uses a material that forms part of the identity of the neighborhood, namely brick.

The architects have opted for the flat, attractively textured "Kolumba" bricks (528 x 108 x 37 cm) developed by Peter Zumthor and Petersen Tegl for the Kolumba Museum in Cologne.

Once again, this choice reflects their eagerness to give the facility and its users a sense of nobility and dignity, doing away with negative preconceptions about care homes.

urbanNext Lexicon

Sara Weill-Raynal Nursing Home
<https://urbannext.net/sara-weill-raynal-nursing-home/>



ISSN : 2575-5374

urbanNext Lexicon

Sara Weill-Raynal Nursing Home
<https://urbannext.net/sara-weill-raynal-nursing-home/>



ISSN : 2575-5374

urbanNext Lexicon

Sara Weill-Raynal Nursing Home
<https://urbannext.net/sara-weill-raynal-nursing-home/>

ISSN : 2575-5374