



SANTANDER FUTURE HABITAT: A NEW CITY MODEL

Posted on May 23, 2023 by martabuges



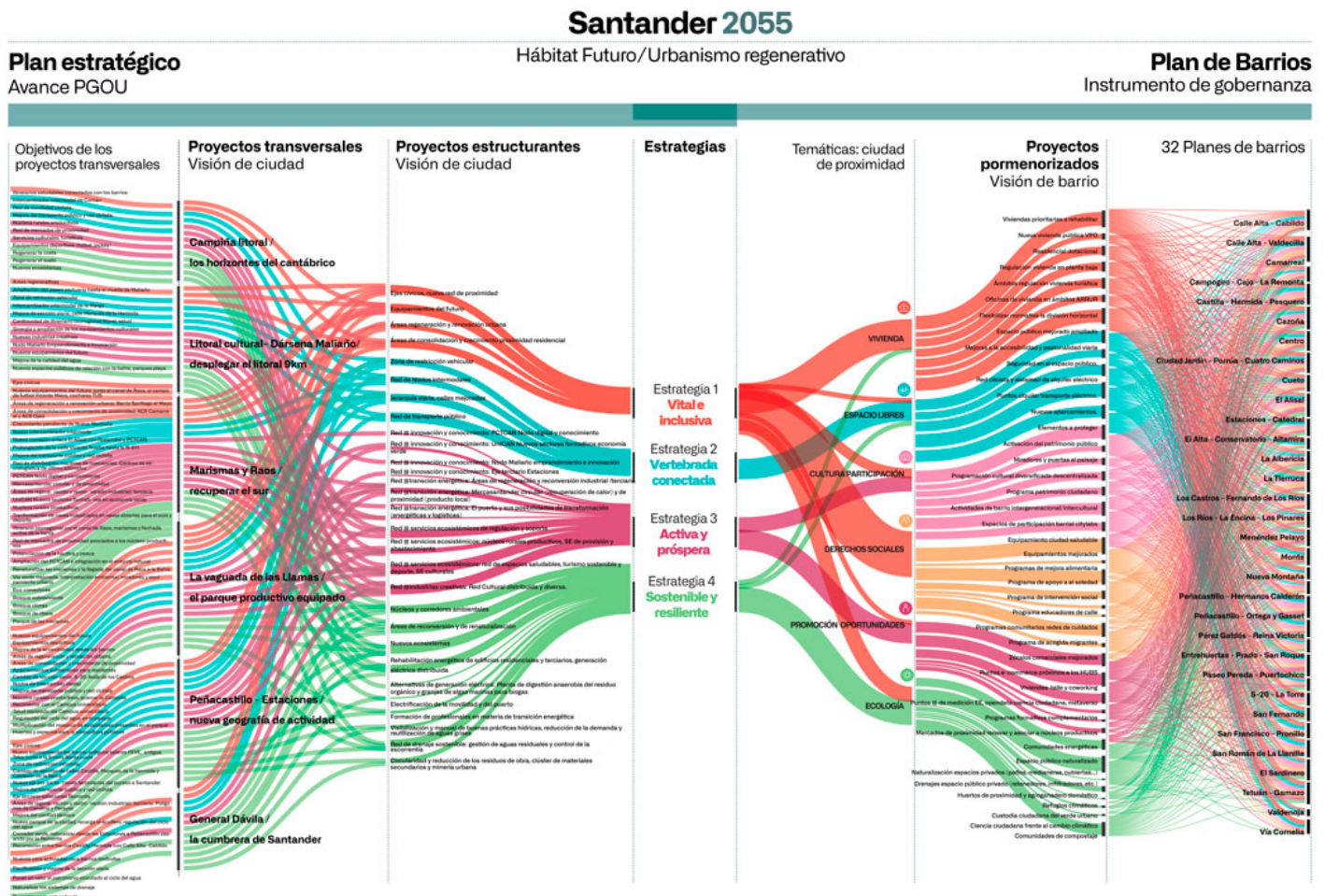
Categories: [Data](#), [Energy and sustainability](#), [LANDLAB](#), [Middle Density](#), [Paisaje Transversal](#), [Territory and mobility](#), [Urban Paradigms](#)

Tags: [Active Public Spaces](#), [Circular design](#), [Data](#), [Greenery](#), [Inclusivity](#), [Mobility](#), [Model](#), [Natural dialogue](#), [Open Space](#), [Participation](#), [Political & Economic Approach](#), [Quality of Life](#), [Regenerative](#), [Resilience](#), [Santander](#), [Soft mobility](#), [Sustainable](#), [Territorial Approach](#), [Territory&Mobility](#), [Transformation](#), [Transition](#), [Urban Legacy](#), [Urban mobility](#), [Urban planning](#), [Urban policies](#), [Urban regeneration](#)

urbanNext Lexicon

Santander Future Habitat: A New City Model
<https://urbannext.net/santander-future-habitat/>

Santander, Future Habitat is the new city model for Santander. It is not an urban plan (PGOU) but a preliminary document, a prior obligatory step for the preparation of the plan. The difference between one type of document and another is fundamental. A PGOU is a legal technical instrument that defines the intensities and uses of the city. A city model is much more than that: it is the document that defines the road map of the city in the coming years – in this case to 2055 – in relation to urban planning, but also to mobility, to the green areas and open spaces in the city, the economic activities, the vitality of the neighborhoods, etc. Thus, the City Model can and should be developed through more instruments than just the PGOU.



Santander, Future Habitat is a city model designed specifically for Santander based on an in-depth analysis of its conditions, needs and opportunities and following a process of listening and citizen participation started in 2020 through #ParticipaPGS. It is, therefore, a social opinion based model.

Santander, Future Habitat promotes the transformation of the city through regenerative urbanism: a model that restores balance to the urban territory and makes economic and social prosperity compatible with natural processes. With Future Habitat, by 2055 Santander will be a circular, sustainable, resilient, structured, prosperous, lively and inclusive city – a better city.

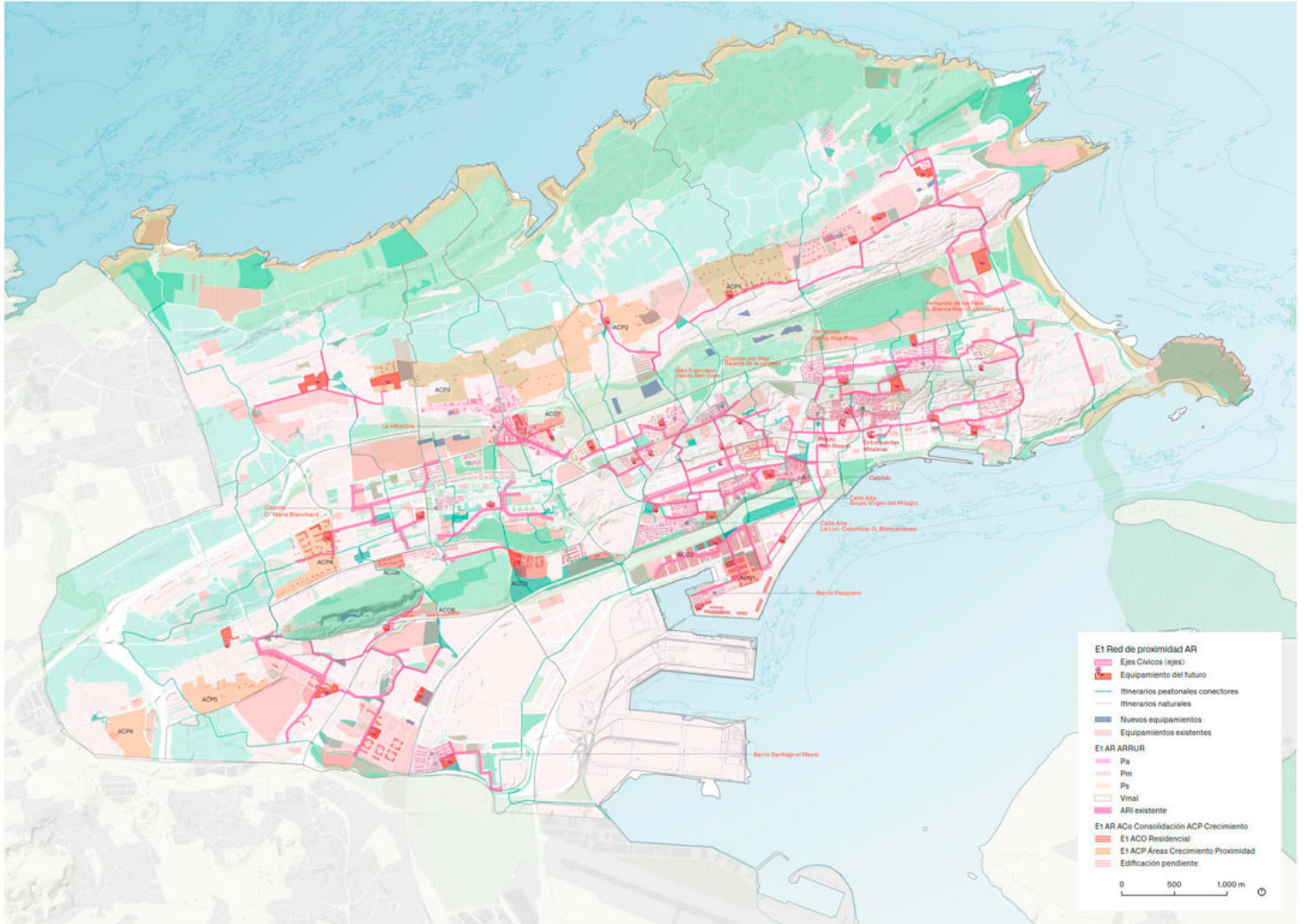
The mission of the professional team led by Landlab and Paisaje Transversal is to understand what the city's inhabitants want for its future, technically analyze all the factors involved, and structure the itinerary to achieve those objectives. It is the first time in the history of Santander that a document of these characteristics has been drawn up: a model made by the city for the city. It is based on the concept of regenerative urbanism. Regenerative urbanism seeks to restore balance to the urban territory, designing systems to permit its adaptation and transformation, moving from a linear and extractive model toward a circular and regenerative one. It implies a change in the ecological, economic and social models around which cities have been developed and defines systems that do not consume available resources but rather ensure compatibility between economic and social prosperity and nature. It is articulated through four strategies:

Vital and inclusive

Santander designs "the 15-minute city" for the neighborhoods of Santander, a model where all daily needs can be met within the distance of a walk or bike ride. The city has a human scale and is welcoming for everyone, with all the necessary services, facilities and activities connected by a network of civic streets and itineraries that directly influence the quality of urban life. This strategy provides the conceptual core of the Neighborhood Plan.

urbanNext Lexicon

Santander Future Habitat: A New City Model
<https://urbannext.net/santander-future-habitat/>



Propuestas estructurantes Red de proximidad y Áreas regenerativas

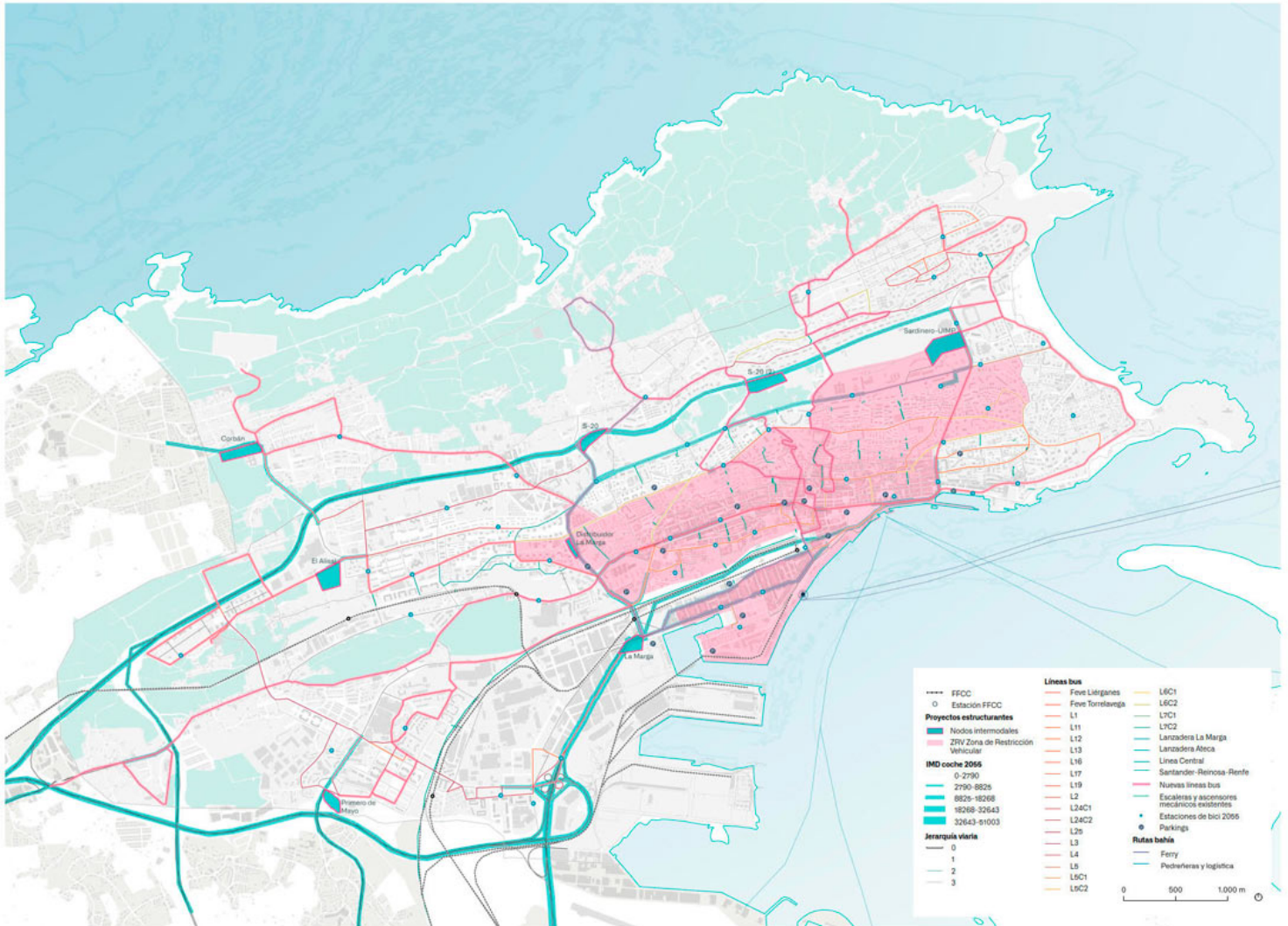
Accessible and connected

Santander facilitates the infrastructures and necessary systems to promote modal diversity, complete decarbonization and progressive mobility. The strategy promotes active, pedestrian and cycling mobility within the city, with friendlier public spaces and multimodal nodes that decongest the urban area and provide collective, efficient, distributed and electric transport.

ISSN : 2575-5374

urbanNext Lexicon

Santander Future Habitat: A New City Model
<https://urbannext.net/santander-future-habitat/>



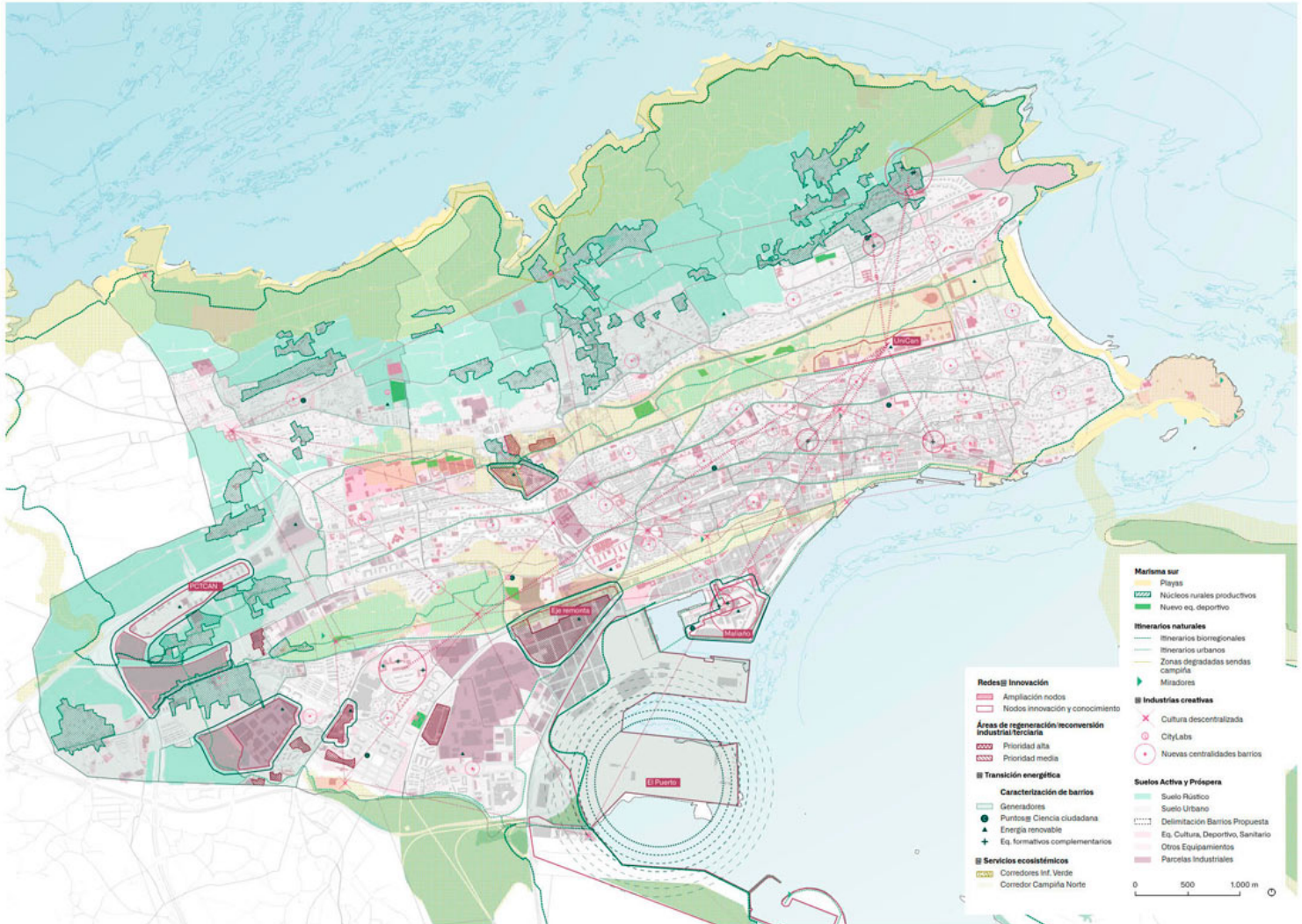
Propuestas estructurantes
Red de movilidad sostenible

Active and prosperous

Santander aims to strengthen existing facilities and economic sectors in the city through innovation and the energy transition, implementing a circular and local economy that adapts to future changes. The model updates and adapts the economic sectors that are strategic to Santander due to its natural resources and its location, which can attract investment and professionals.

urbanNext Lexicon

Santander Future Habitat: A New City Model
<https://urbannext.net/santander-future-habitat/>



Plano de Propuestas
Redes @

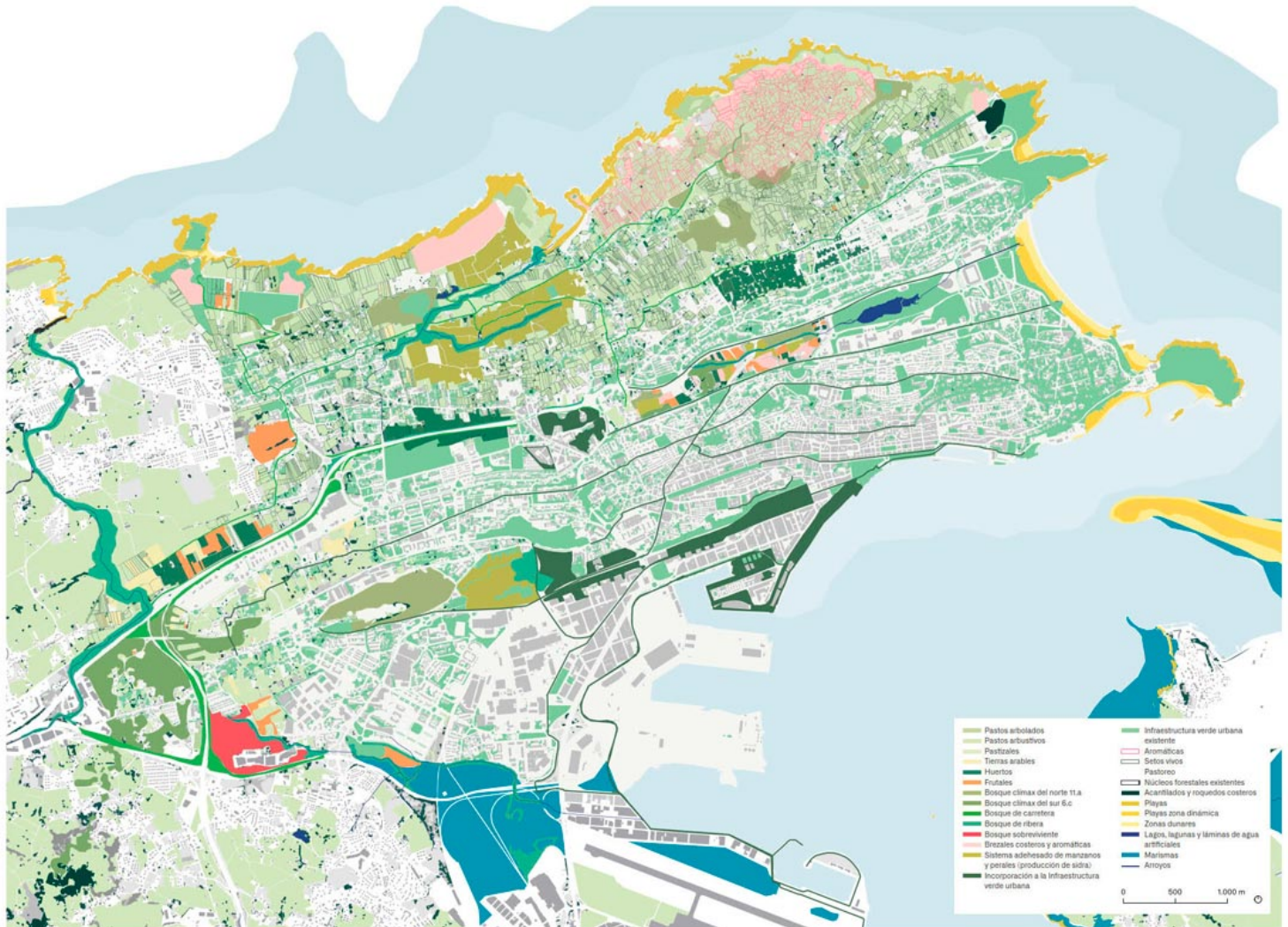
Sustainable and resilient

Santander defines a strategy that guarantees the success of ecological processes in the city with the goal of regenerating relationships with the natural environment and/or rural areas, both at a municipal and regional level. It also defines proposals for the efficient use and treatment of water, energy, waste and resources, reducing the impact of human activity and ensuring circularity.

ISSN : 2575-5374

urbanNext Lexicon

Santander Future Habitat: A New City Model
<https://urbannext.net/santander-future-habitat/>



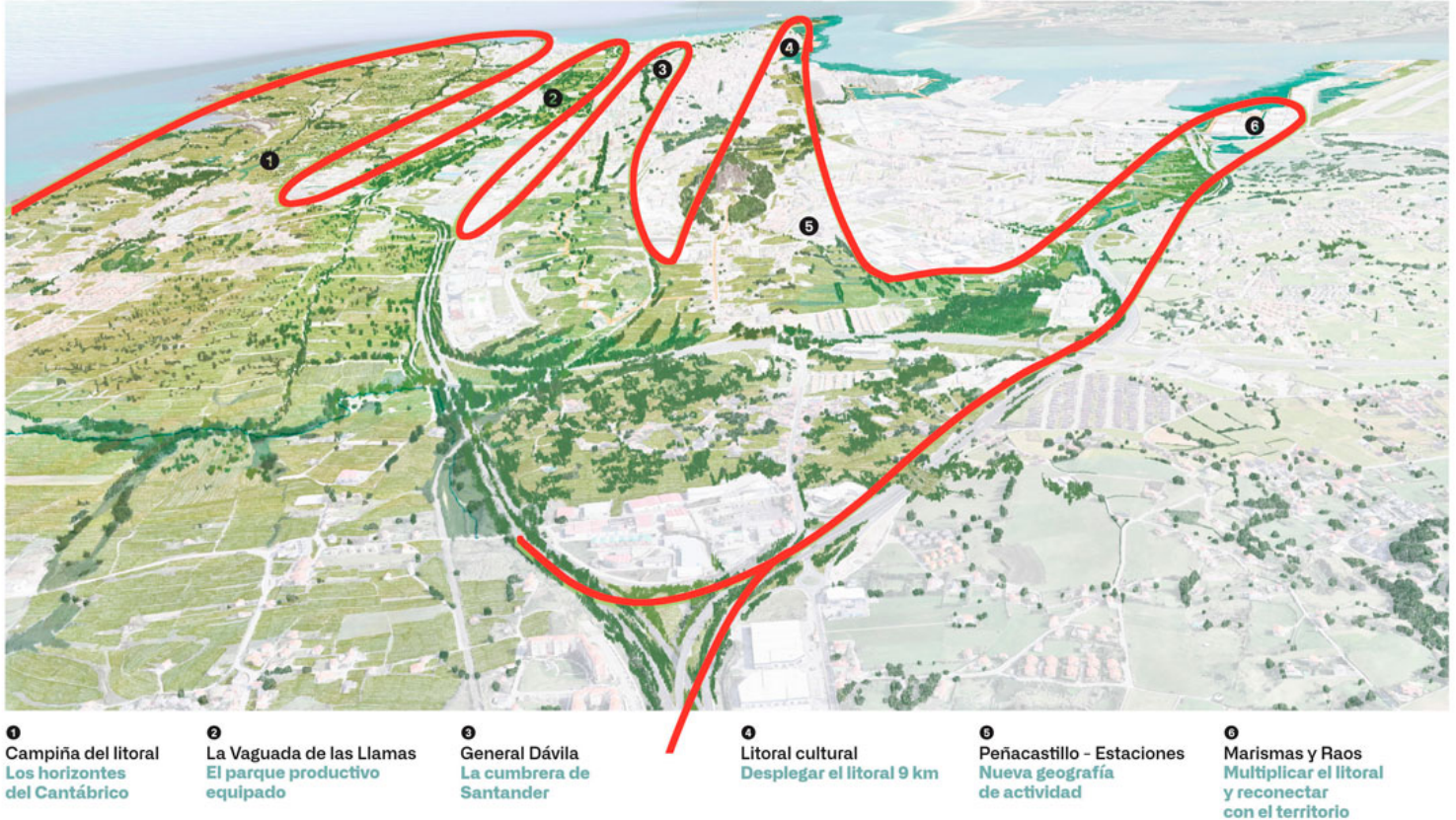
Propuestas estructurantes Áreas de reconversión y renaturalización. Nuevos ecosistemas

Transversal projects for the transformation of the city

The four strategies above are integrated through various projects that define different areas of opportunity for the future of the city of Santander. They are intended to offer an overall vision that amplifies effects and achieves the desired objectives.

urbanNext Lexicon

Santander Future Habitat: A New City Model
<https://urbannext.net/santander-future-habitat/>



Neighborhood Plan

The Neighborhood Plan is a symbiosis between a planning instrument and a tool for citizen participation drawing on regenerative urbanism. The Neighborhood Plan contains an initial proposal for each of the 32 neighborhoods; it has a comprehensive scope that offers each neighborhood a plan to evolve towards the city of proximity through a flexible and open plan that should be debated in discussion spaces with the participation of experts and citizens alike.

urbanNext Lexicon

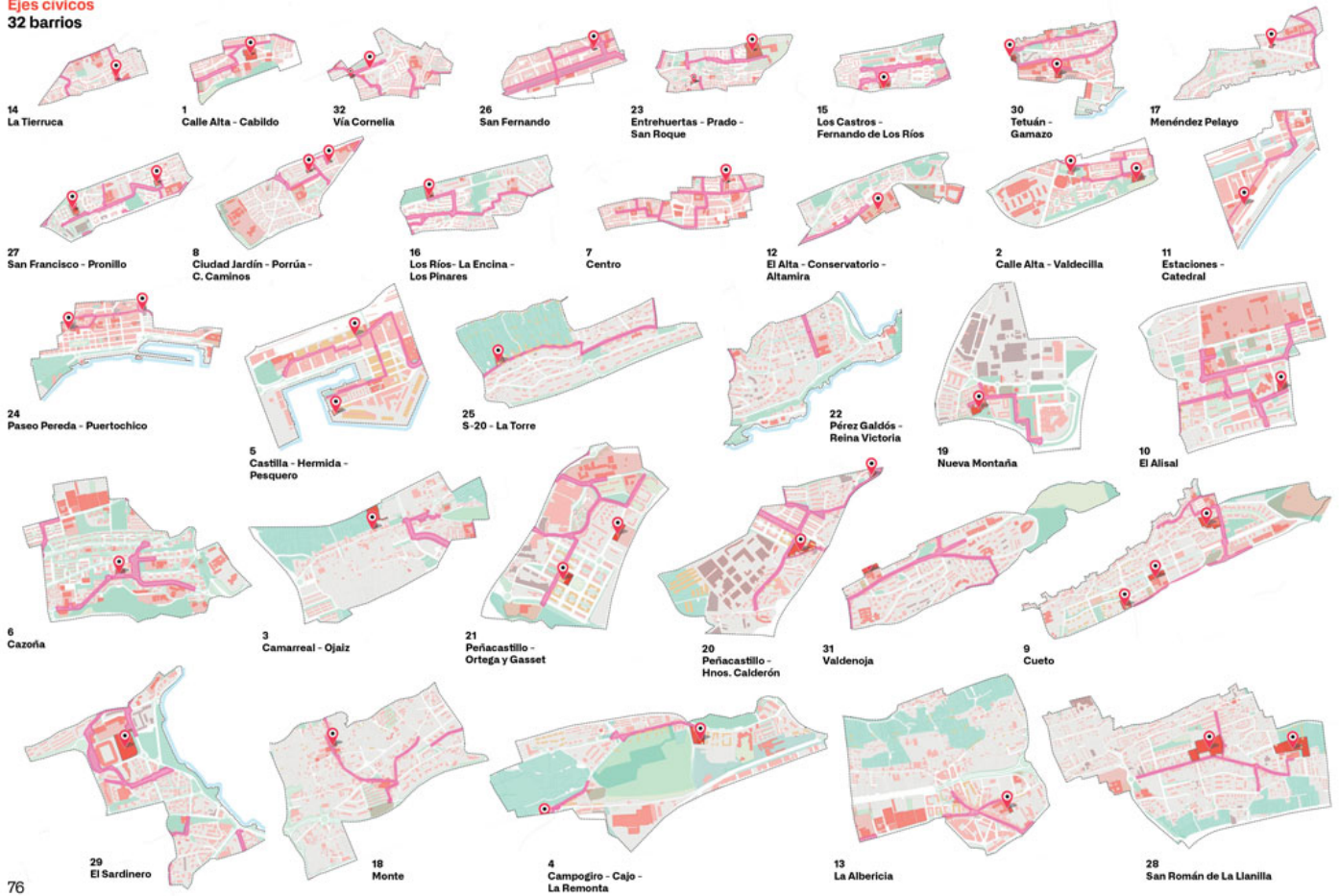
Santander Future Habitat: A New City Model
<https://urbannext.net/santander-future-habitat/>

Plan estratégico

Estrategia 1 – Santander, vital e inclusiva

Santander, Hábitat Futuro

Ejes cívicos
32 barrios



76

ISSN : 2575-5374

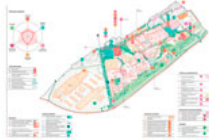
urbanNext Lexicon

Santander Future Habitat: A New City Model
<https://urbannext.net/santander-future-habitat/>

Calle Alta - Cabildo



Calle Alta - Valdecilla



Cueto



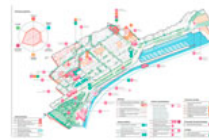
El Alisal



Nueva Montaña



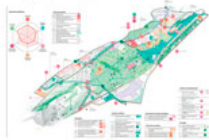
Paseo Pereda - Puertochico



Camarreal



Campogiro - Cajo - La Remonta



El Alta - Conservatorio - Altamira



El Sardinero



Peñacastillo - Hermanos Calderón



Peñacastillo - Ortega y Gasset



Objetivos del Plan de Barrios

- Desarrollar un plan estratégico para cada barrio que permita avanzar hacia la ciudad de los 15 minutos en paralelo al PGOU
- Generar instrumentos de gobernanza barrial y municipal.
- Dinamizar la identidad cultural, reforzar la identidad y singularidad de cada uno de los barrios.
- Reducir la desigualdades entre barrios.

Contenidos del Plan de Barrios

El Plan de barrios despliega la estrategia del modelo de ciudad Santander habitat futuro a través de 32 planes de barrio en los que se recoge para cada uno, tal y como se muestra en las leyendas, tanto los principales proyectos estructurantes de las 4 estrategias del modelo de ciudad, como el conjunto de propuestas pormenorizadas organizadas en las 6 temáticas transversales que definen la ciudad de proximidad. El índice de las propuestas iniciales pormenorizadas del Plan de Barrios, describe de modo general las propuestas tipo cuya viabilidad e idoneidad deberá ser estudiada por las diferentes administraciones competentes.

Ánisis comparado de barrios

El punto de partida del Plan de cada barrio es el resultado de su análisis. Para cada barrio se muestra la estrella con el valor global de cada barrio para cada una de las temáticas, de esta manera podemos saber sobre qué aspectos se debe incidir. Los números del 1 al 4 determinan en qué nivel del cuartil se encuentra el barrio, siendo 1 peor, y 4 mejor.



Entrehuertas - Prado - San Roque



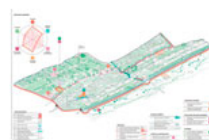
Estaciones - Catedral



Pérez Galdós - Reina Victoria



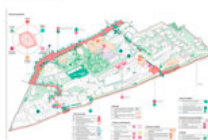
S-20 - La Torre



La Albericia



La Tierrauca



San Fernando



San Francisco - Pronillo



Castilla - Hermida - Pesquero



Cazorla



Los Castros - Fernando de Los Ríos



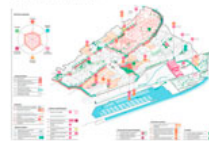
Los Ríos - La Encina - Los Pinares



San Román de La Llanilla



Tetuán - Gamazo



Centro



Ciudad Jardín - Porrúa - Cuatro Caminos



Menéndez Pelayo



Monte



Valdeñoja



Vía Cornelia



ISSN : 2575-5374

urbanNext Lexicon

Santander Future Habitat: A New City Model
<https://urbannext.net/santander-future-habitat/>

ISSN : 2575-5374