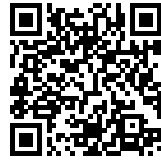




RWANDAN SHARE HOUSES

Posted on December 18, 2015 by Urban UrbanNext



Categories: [africanCities](#), [Low Density](#), [Middle Density](#), [Politics and economics](#), [Project](#), [Sharon Davis Design](#), [Technology and fabrication](#)

Tags: [Africa](#), [africanCities](#), [Bricks](#), [Eucalyptus](#), [Facilities](#), [Local manufacture](#), [Low budget](#), [On Discourse and Practices](#), [Plywood ceiling](#), [Political & Economic Approach](#), [Project](#), [Public housing](#), [Rwanda](#), [Social housing](#), [Technological Approach](#), [Temporary housing](#), [Wood](#)

urbanNext Lexicon

Rwandan Share Houses

<https://urbannext.net/rwandan-share-houses/>



Located on a hillside in rural Rwinkwavu, Rwanda, Share Houses provides 6,900 square feet of temporary housing for medical professionals from Partners In Health and Ministry of Health.

ISSN : 2575-5374

urbanNext Lexicon

Rwandan Share Houses

<https://urbannext.net/rwanda-share-houses/>



SITE PLAN

Employees of the nonprofit organization and government agency live in Share Houses for as long as one year, as they perform contract work at Rwinkwavu Hospital or attend the hospital's adjacent training facility. The facility is divided into a pair of single-story bar volumes. In each, eight bedrooms are arranged around a multi-tiered common space to promote community among various

ISSN : 2575-5374

urbanNext Lexicon

Rwandan Share Houses

<https://urbannext.net/rwanda-share-houses/>

healthcare staff.



ISSN : 2575-5374

urbanNext Lexicon

Rwandan Share Houses

<https://urbannext.net/rwandan-share-houses/>



ISSN : 2575-5374

urbanNext Lexicon

Rwandan Share Houses

<https://urbannext.net/rwandan-share-houses/>



ISSN : 2575-5374

urbanNext Lexicon

Rwandan Share Houses

<https://urbannext.net/rwandan-share-houses/>



ISSN : 2575-5374

urbanNext Lexicon

Rwandan Share Houses

<https://urbannext.net/rwanda-share-houses/>



ISSN : 2575-5374

urbanNext Lexicon

Rwandan Share Houses

<https://urbannext.net/rwanda-share-houses/>



ISSN : 2575-5374

urbanNext Lexicon

Rwandan Share Houses

<https://urbannext.net/rwandan-share-houses/>



The design elevates the dormitory experience for individual residents through additional means. Bedrooms open to private exterior spaces that boast western views to the Vallée Kibaya. Balconies and other exterior circulation spaces are shaded for comfort in the hot, dry climate. And woven eucalyptus screens provide privacy, while also referencing thatching materials of traditional Rwandan construction.



Share Houses' reliance on regional building materials, such as eucalyptus collected from the area,

ISSN : 2575-5374

urbanNext Lexicon

Rwandan Share Houses

<https://urbannext.net/rwandan-share-houses/>

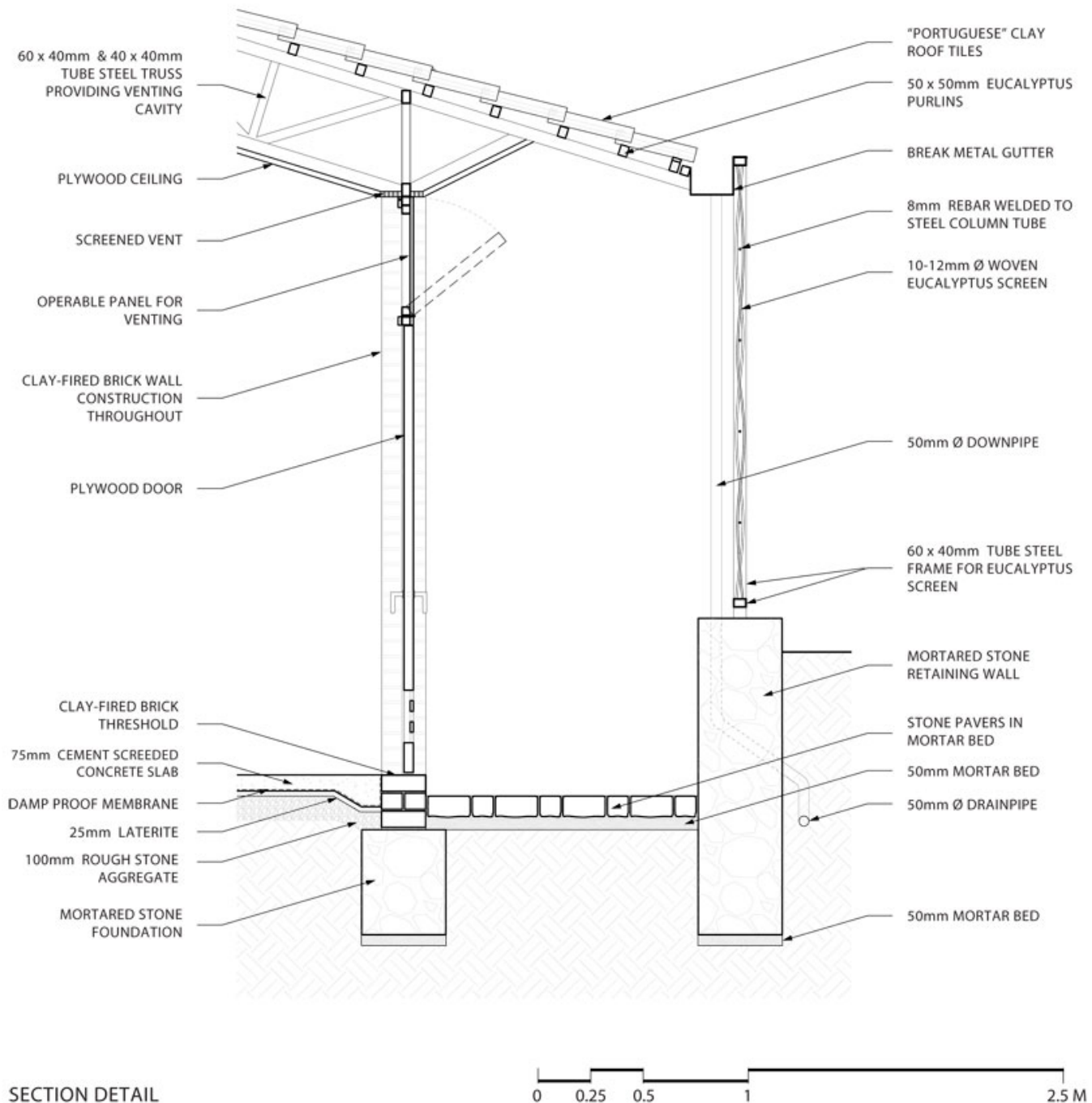
represents a parallel design response to the clients' tight budget. Key sources include bricks handmade by a nearby women's cooperative, locally quarried stone, and the clay tiles that form the project's ventilated roof cavity. Rwinkwavu residents performed approximately 90 percent of labor, and women represented at least one-third of hires throughout construction. Sharon Davis Design conceived and executed the project in partnership with Rwanda Village Enterprise.



ISSN : 2575-5374

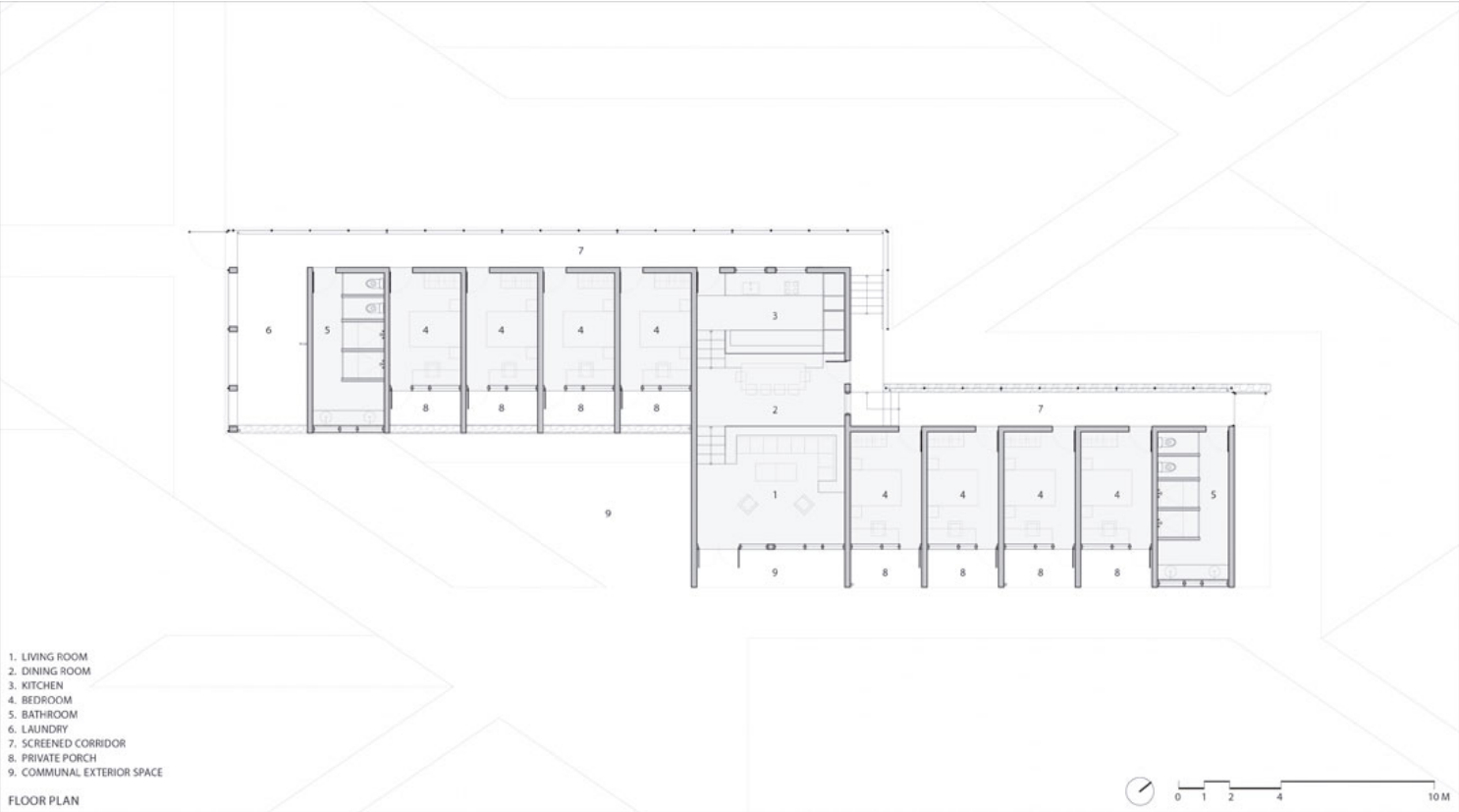
urbanNext Lexicon

Rwandan Share Houses
<https://urbannext.net/rwanda-share-houses/>



ISSN : 2575-5374

urbanNext Lexicon



urbanNext Lexicon

Rwandan Share Houses
<https://urbannext.net/rwandan-share-houses/>

ISSN : 2575-5374