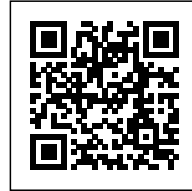




## ROMSDAL FOLK MUSEUM

*Posted on March 26, 2016 by Urban UrbanNext*



**Categories:** [Middle Density](#), [Project](#), [Reiulf Ramstad Arkitekter](#), [Technology and fabrication](#)

**Tags:** [Culture](#), [Exhibition](#), [Local resources](#), [Local solutions](#), [Low-tech building](#), [Møre og Romsdal](#), [Museology](#), [Museum](#), [Natural connectors](#), [Norway](#), [Norwegian timber technology](#), [Pine wood](#), [Project](#), [Sustainable construction](#), [Technological Approach](#), [Wooden panels](#)

# urbanNext Lexicon

Romsdal Folk Museum

<https://urbannext.net/romsdal-folk-museum/>

The Romsdal Folk Museum is an architectonic attraction and a treasured landmark that embodies the history and identity of the entire region. Our intention in this project was to let the structure signal its meaning and function through an architectural expression and the use of local materials. The scale of the building refers to the urbanity and morphology of the town. The overall layout of the museum grounds the connections to the town by linking different surrounding areas in an overall plan where all circulation is linked in a unified structure. The project conveys an open and progressive attitude that makes diverse utilization possible.

ISSN : 2575-5374

# urbanNext Lexicon

Romsdal Folk Museum

<https://urbannext.net/romsdal-folk-museum/>



The Museum design approach is rooted in rationality and sustainability. The plan geometry is deceptively simple, the characteristic angled shapes are limited to the roof and the external wall, making the circulation and internal organization clear and flexible. The public areas are clearly separated from the administration wing, which is located on both the ground and first floor.

ISSN : 2575-5374

# urbanNext Lexicon

Romsdal Folk Museum

<https://urbannext.net/romsdal-folk-museum/>

Exhibition rooms, the auditorium and the library are all placed on the ground floor to increase flexibility and user experience. The transparency of the reception room permits supporting internal and external activities. Large sliding doors separate the permanent and temporary exhibition areas, giving the curators the ability to combine or separate the spaces. The archives and workshops are located on the basement level, with the vertical circulation of large items facilitated by a large goods lift.



ISSN : 2575-5374



# urbanNext Lexicon

Romsdal Folk Museum

<https://urbannext.net/romsdal-folk-museum/>



Pine is the primary building material of the museum. Exterior walls and roof are made of solid timber in combination of steel beam when required. The terrain entailed the use of concrete, however its use was reduced to the foundations. Exterior walls and ceilings covered with maintenance-pine relief tempered with bio-based oil.

Different openings filter the daylight in such way that the internal space are enriched by gradations

ISSN : 2575-5374

# urbanNext Lexicon

Romsdal Folk Museum

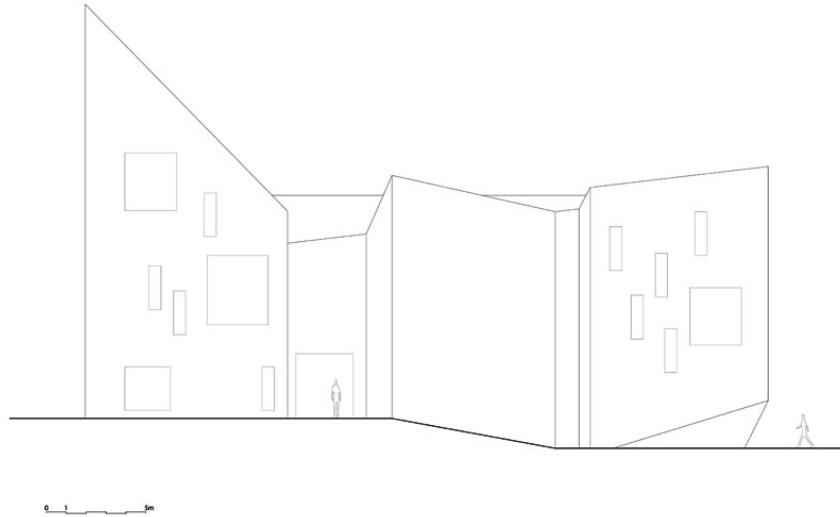
<https://urbannext.net/romsdal-folk-museum/>

and translucency nuances. However, the main exhibition rooms are black boxes, giving the curators total control of artificial lightening in these areas. All the glazing units have high-energy performance glass, in some locations with silk printed colors and patterns.



## Plans

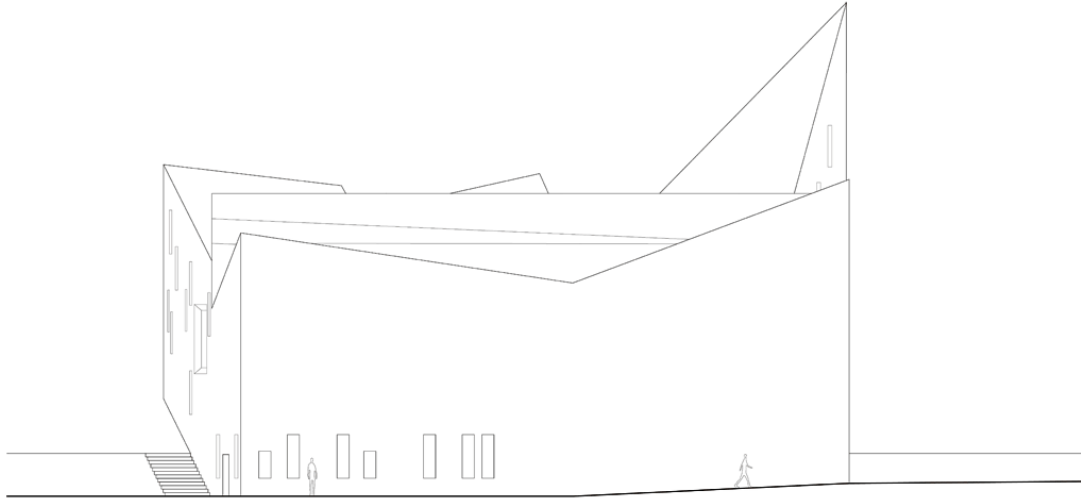
ISSN : 2575-5374



**South Elevation**



**East Elevation & Section**



**North Elevation & Section**

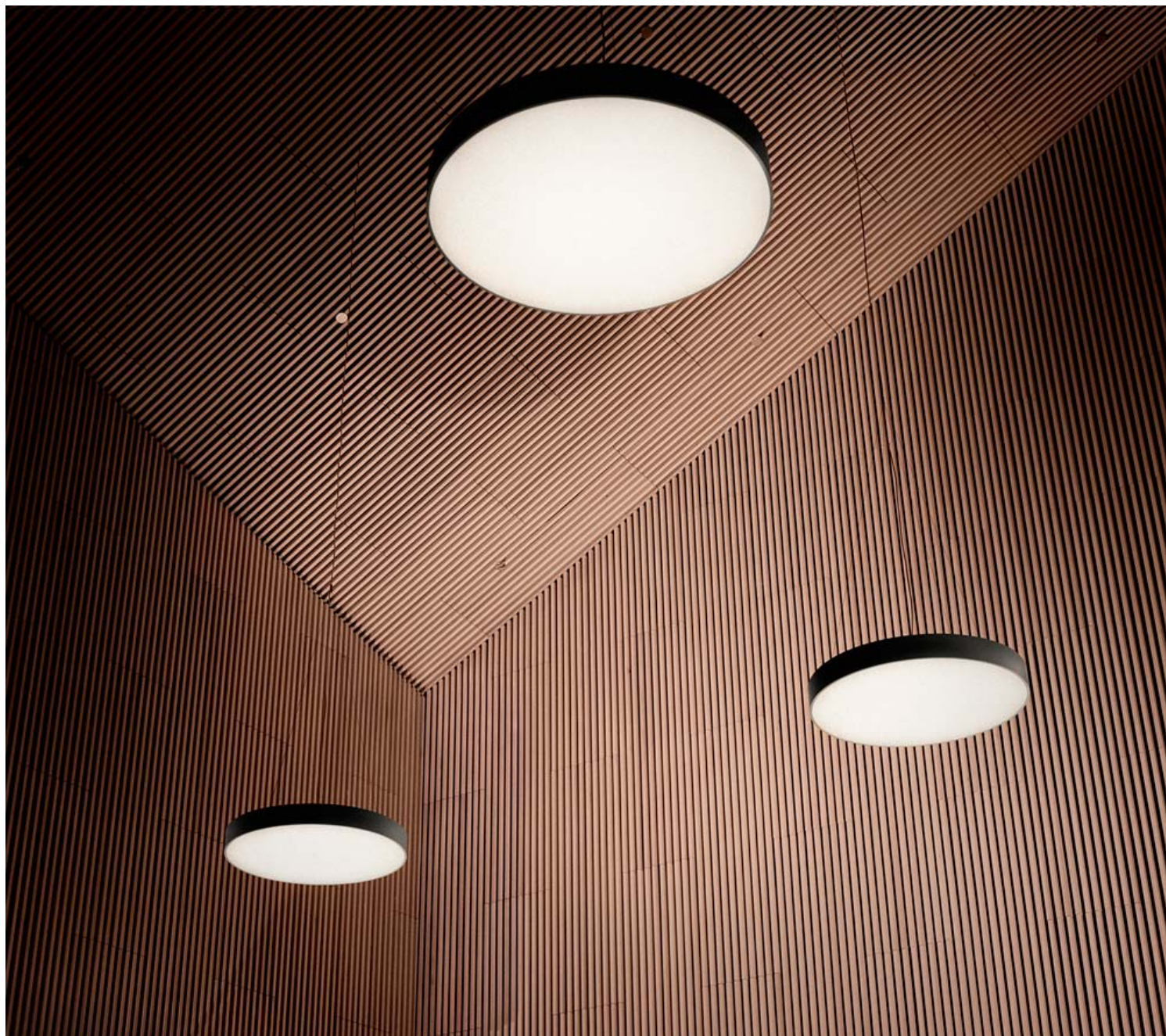


**West Elevation**



# urbanNext Lexicon

Romsdal Folk Museum  
<https://urbannext.net/romsdal-folk-museum/>



ISSN : 2575-5374



# urbanNext Lexicon

Romsdal Folk Museum  
<https://urbannext.net/romsdal-folk-museum/>



ISSN : 2575-5374



# urbanNext Lexicon

Romsdal Folk Museum  
<https://urbannext.net/romsdal-folk-museum/>



ISSN : 2575-5374

## **Impact on Nordic society**

---

The Romsdal Folk Museum is a great example of strategic use of low-tech building solutions. It embodies the national policy in Norway to aim for a more sustainable future. The museum is built using Norwegian timber technology and acts as a hub for cultural development.

# urbanNext Lexicon

Romsdal Folk Museum

<https://urbannext.net/romsdal-folk-museum/>



In this building, the people of Molde as well as visitors and tourists are given the opportunity to connect and to build a wider community. The museum hosts not only exhibits about Norwegian culture but also concerts, workshops and lectures on a day-to-day basis.

ISSN : 2575-5374



# urbanNext Lexicon

Romsdal Folk Museum

<https://urbannext.net/romsdal-folk-museum/>



The architectural form brings together the region's folk culture and the area's characteristic landscape qualities in a larger composition. The range of perspectives and activities ensures a broad audience, with the museum becoming a living centre for the exploration of the region's history, contemporary culture, and future.

ISSN : 2575-5374

# urbanNext Lexicon

Romsdal Folk Museum  
<https://urbannext.net/romsdal-folk-museum/>

ISSN : 2575-5374