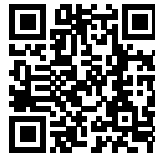




## RANCHO SF: IDENTITY THROUGH LOCAL MATERIALS

*Posted on July 9, 2018 by martabuges*



---

**Categories:** [AE Arquitectos](#), [Designing Matter](#), [Low Density](#), [Project](#), [Territory and mobility](#)

**Tags:** [Courtyard](#), [Designing Matter](#), [Housing](#), [Jalisco](#), [Landscape](#), [Local materials](#), [Materials](#), [Mexico](#), [Natural materials](#), [Project](#), [Tapalpa](#), [Territorial Approach](#), [Volcano](#), [Wood](#)

# urbanNext Lexicon

Rancho SF: Identity Through Local Materials  
<https://urbannext.net/rancho-sf/>

Rancho San Francisco is part of a bigger project that integrates a community of multi-familiar properties or ranches that share common grounds as well as the amenities to create a solid sense of community.



ISSN : 2575-5374

# urbanNext Lexicon

Rancho SF: Identity Through Local Materials  
<https://urbannext.net/rancho-sf/>



The ranch has a central patio that integrates these common grounds with the areas designed specifically for taking care of the horses and horse riding.

ISSN : 2575-5374



# urbanNext Lexicon

Rancho SF: Identity Through Local Materials

<https://urbannext.net/rancho-sf/>



ISSN : 2575-5374



# urbanNext Lexicon

Rancho SF: Identity Through Local Materials

<https://urbannext.net/rancho-sf/>



The central patio plays a major role in the development of Rancho San Francisco. Apart from integrating both spaces, it creates a new area within itself for leisure. A grid of oaks that will embellish the landscape as they grow, surrounds it.

ISSN : 2575-5374

# urbanNext Lexicon

Rancho SF: Identity Through Local Materials

<https://urbannext.net/rancho-sf/>



ISSN : 2575-5374



# urbanNext Lexicon

Rancho SF: Identity Through Local Materials

<https://urbannext.net/rancho-sf/>



Rancho San Francisco has a unique identity that originated from the selection of endemic and foreign materials. Volcanic rock was cut and molded specifically to create a neutral tone that contrasted with the wood. In this case, we utilized pinewood, which is abundant in this part of Jalisco. Spanish board was added as the finishing touch.

ISSN : 2575-5374

# urbanNext Lexicon

Rancho SF: Identity Through Local Materials

<https://urbannext.net/rancho-sf/>



ISSN : 2575-5374



# urbanNext Lexicon

Rancho SF: Identity Through Local Materials

<https://urbannext.net/rancho-sf/>



ISSN : 2575-5374

# urbanNext Lexicon

Rancho SF: Identity Through Local Materials  
<https://urbannext.net/rancho-sf/>



The idea behind the materials and their arrangement was to emphasize the sense of belonging. The families that inhabit Rancho San Francisco will share this in common thus strengthen their own personal relations.

The stables' layout forms a structure pointing in two directions giving the façade solidity and sobriety. It encourages the spectator to imagine what is going on inside.

ISSN : 2575-5374



# urbanNext Lexicon

Rancho SF: Identity Through Local Materials

<https://urbannext.net/rancho-sf/>



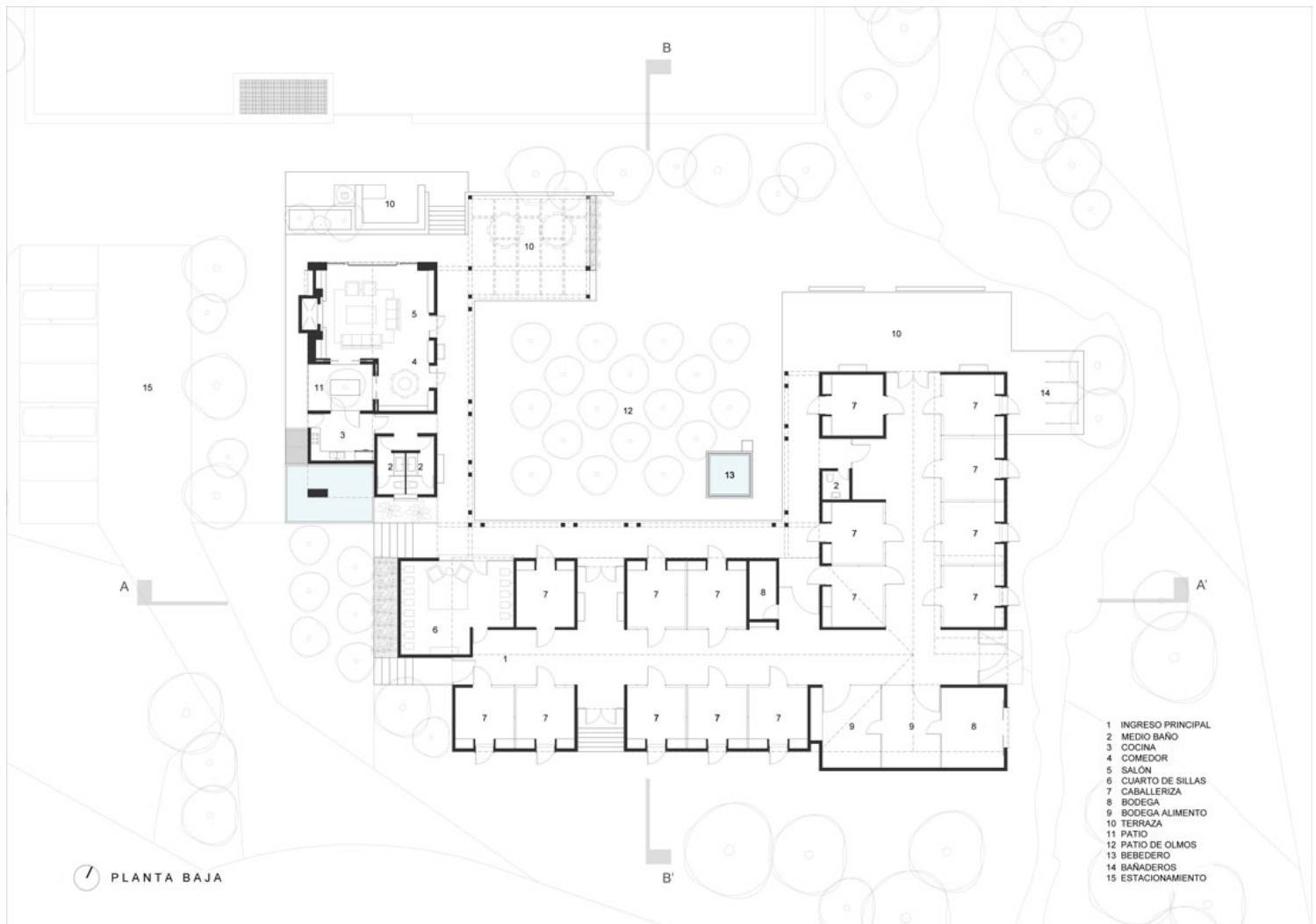
Rancho San Francisco is pointing north and looks into the open field for horse-riding and other horse related activities. Finally, the landscaping had to take into consideration the copious raining season. We designed a water borderline for the falling rain to flow into.

ISSN : 2575-5374

# urbanNext Lexicon

Rancho SF: Identity Through Local Materials

<https://urbannext.net/rancho-sf/>



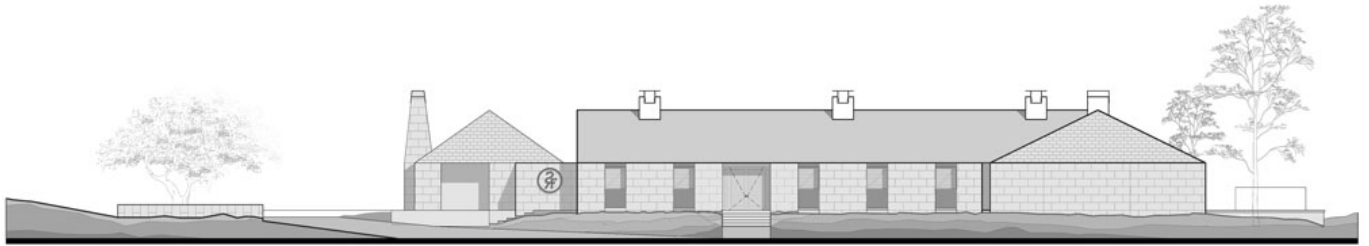
ISSN : 2575-5374



# urbanNext Lexicon

Rancho SF: Identity Through Local Materials

<https://urbannext.net/rancho-sf/>



ALZADO SUR



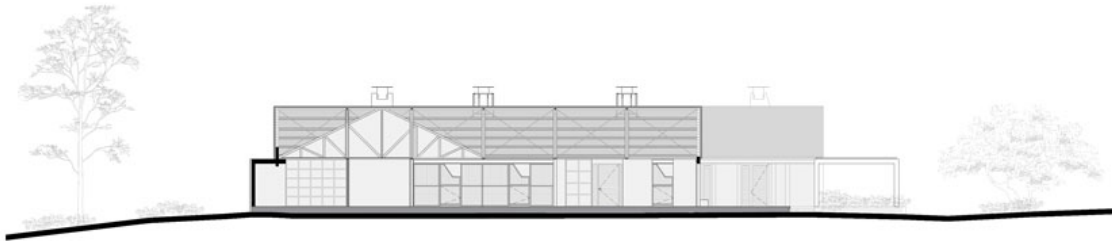
ALZADO NORTE

ISSN : 2575-5374

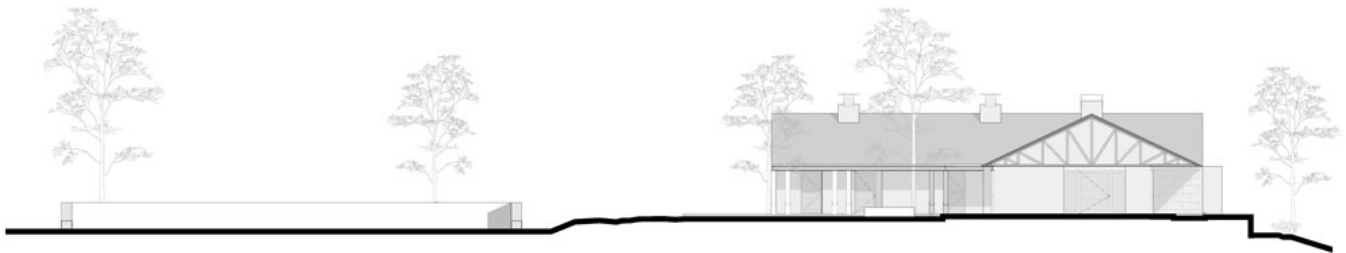
# urbanNext Lexicon

Rancho SF: Identity Through Local Materials

<https://urbannext.net/rancho-sf/>



SECCIÓN A-A'



SECCIÓN B-B'

ISSN : 2575-5374



# urbanNext Lexicon

Rancho SF: Identity Through Local Materials  
<https://urbannext.net/rancho-sf/>

ISSN : 2575-5374