



PROVINCE HEADQUARTERS: ADAPTATION TO SUSTAINABILITY STANDARDS

Posted on May 17, 2022 by martabuges



Categories: [Contributors](#), [Densities](#), [Formats](#), [High Density](#), [Project](#), [Territory and mobility](#), [Topics](#), [XDGA](#)

Tags: [Antwerp](#), [Belgium](#), [Concrete](#), [Design strategies](#), [Geometry](#), [Greenery](#), [Landmark](#), [Programmatic coexistences](#), [Project](#), [Structure](#), [Sustainability](#), [Transformation](#), [Working Space](#)

urbanNext Lexicon

Province Headquarters: Adaptation to Sustainability Standards

<https://urbannext.net/province-headquarters/>

The new building replaces a complex of modernist building volumes that used to occupy the entire site and that could not be adapted to today's sustainability standards. As the Antwerp city center has few public green surfaces, the transformation of the site from a merely private, mineral and infrastructural area into a public garden is a crucial requirement of the competition brief.



ISSN : 2575-5374

urbanNext Lexicon

Province Headquarters: Adaptation to Sustainability Standards

<https://urbannext.net/province-headquarters/>



ISSN : 2575-5374

urbanNext Lexicon

Province Headquarters: Adaptation to Sustainability Standards

<https://urbannext.net/province-headquarters/>



Surrounded by fragments of public green, the parcel is key to the formation of a larger, coherent park. Another, contradictory, demand was to maintain a more recent representational pavilion, which was positioned as an obstacle in between the fragments.

ISSN : 2575-5374

urbanNext Lexicon

Province Headquarters: Adaptation to Sustainability Standards
<https://urbannext.net/province-headquarters/>



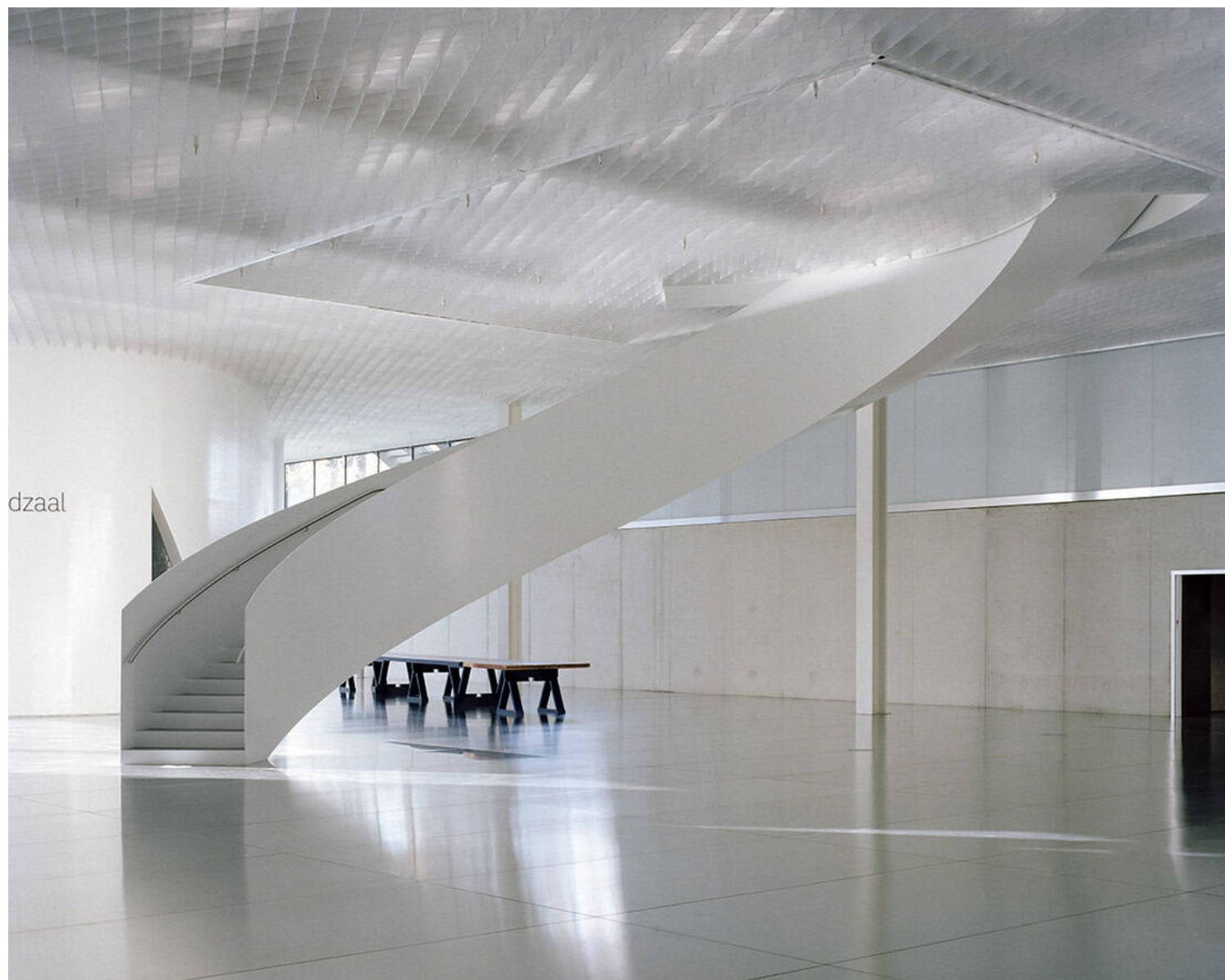
By situating the full program in a compact volume across the pavilion, this frontage is cut up and the main entrance is brought close to the street. This large volume, however, divides the park into a front and a back garden.

ISSN : 2575-5374

urbanNext Lexicon

Province Headquarters: Adaptation to Sustainability Standards

<https://urbannext.net/province-headquarters/>



dzaal

ISSN : 2575-5374

urbanNext Lexicon

Province Headquarters: Adaptation to Sustainability Standards

<https://urbannext.net/province-headquarters/>



Finally, by rotating the plan around one of its corners as it climbs up, the building shifts towards the center; existing neighboring buildings are respected and a sculptural form emerges. During the design process the pavilion building was ultimately replaced by a glazed volume to house the congress and exhibition part of the program.

ISSN : 2575-5374

urbanNext Lexicon

Province Headquarters: Adaptation to Sustainability Standards

<https://urbannext.net/province-headquarters/>



ISSN : 2575-5374

urbanNext Lexicon

Province Headquarters: Adaptation to Sustainability Standards
<https://urbannext.net/province-headquarters/>



The building is conceived as a bridge structure over and across the pavilion. At the center of the plan, one large steel truss spans from one core to the other. Two more trusses are integrated in the concrete side walls and their triangulation defines the form of the window openings. In a next step, this window form is applied all over the building as it provides maximum efficiency in striking an ideal balance between daylight access and overheating by the sun. The opaque façade is clad in

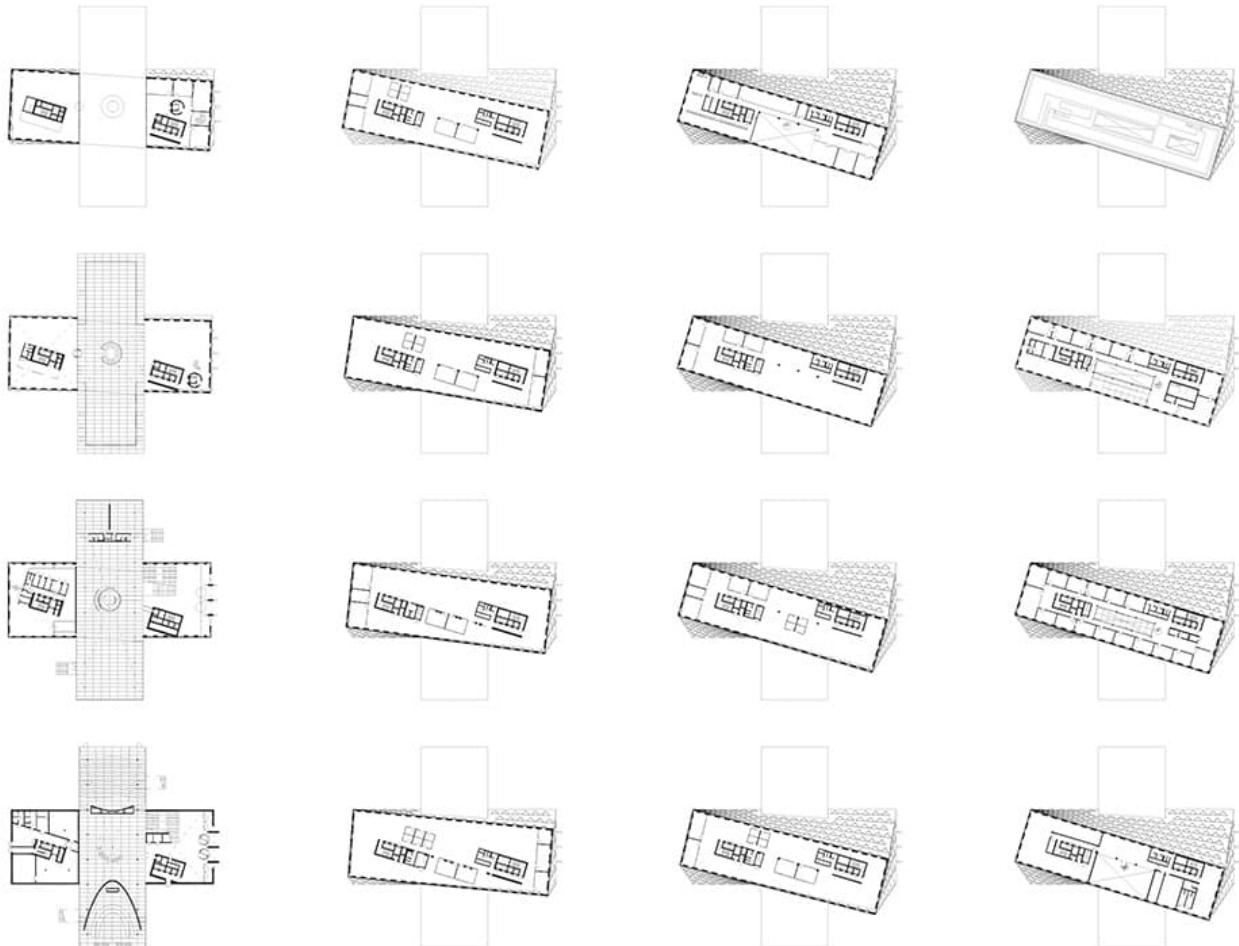
ISSN : 2575-5374

urbanNext Lexicon

Province Headquarters: Adaptation to Sustainability Standards

<https://urbannext.net/province-headquarters/>

circular, white glass mosaic while the pavilion is a fully transparent box in the park.

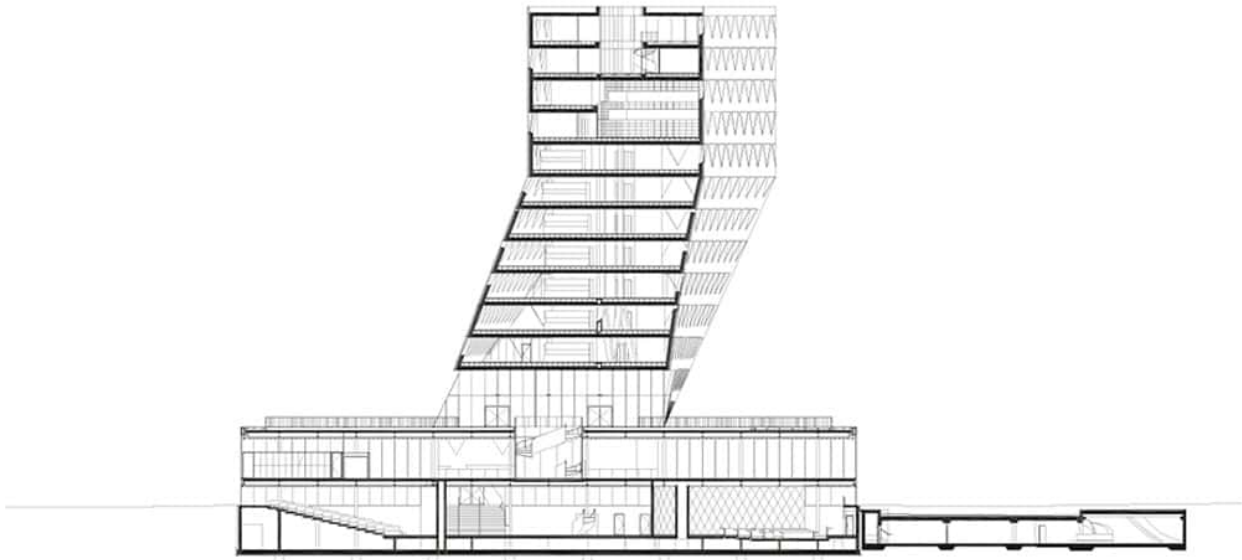


ISSN : 2575-5374

urbanNext Lexicon

Province Headquarters: Adaptation to Sustainability Standards

<https://urbannext.net/province-headquarters/>



ISSN : 2575-5374

urbanNext Lexicon

Province Headquarters: Adaptation to Sustainability Standards
<https://urbannext.net/province-headquarters/>

ISSN : 2575-5374