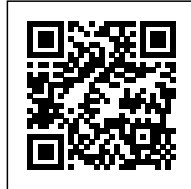




1100 Architect  
Osthafen

## OSTHAFEN

*Posted on March 14, 2017 by urbanNext*



---

**Categories:** [1100 Architect](#), [Energy and sustainability](#), [High Density](#), [Project](#), [Technology and fabrication](#)

**Tags:** [Active Building](#), [Background](#), [Building](#), [Ecological activation](#), [Ecological agencies](#), [Ecological researches](#), [Energetic Approach](#), [Façade orientation](#), [Frankfurt am Main](#), [Germany](#), [Housing](#), [Multifunctional building](#), [New materials](#), [Post-war society](#), [Project](#), [Refurbishment](#), [Sustainability](#), [Sustainable behaviors](#), [Technological Approach](#), [Urban Paradigms](#)

# urbanNext Lexicon

Osthafen

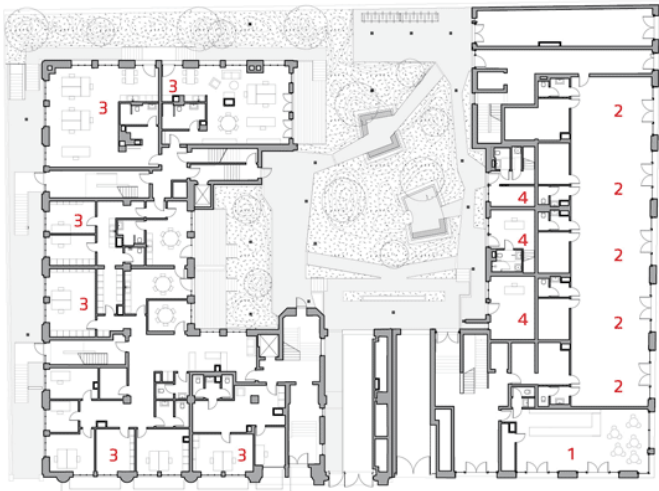
<https://urbannext.net/osthafen/>

With Main: East Side Lofts, 1100 Architect transformed a 100-year-old, derelict, half-completed factory into a contemporary multi-family residential building that has come to catalyze other development in the area. Due to the outbreak of World War I, the original building was never fully realized. Instead, it found improvised use as a hospital, and, later, as workers' housing. The new 1100 Architect-designed project accomplishes two principle aims: an exhaustive renovation of the historic building, and an addition of equal size that brings the resulting building to the scale at which it was originally designed. To achieve a cohesive whole, the addition picks up the volume, rhythm, and proportions of the original building, but it reimagines what had been the unfinished wing in a modern language and with new materials, establishing a contemporary foil for the landmark structure.



ISSN : 2575-5374

GROUND FLOOR PLAN



- LEGEND
- 1. Bakery
  - 2. Shops
  - 3. Offices
  - 4. Townhouses

OSTHAFENPLATZ - EAST SIDE LOFTS  
PLAN - FLOOR 00  
SCALE 1:500



Plans



**South Elevation**





# urbanNext Lexicon

Osthafen

<https://urbannext.net/osthafen/>



ISSN : 2575-5374

# urbanNext Lexicon

Osthafen

<https://urbannext.net/osthafen/>



ISSN : 2575-5374





The façade, which is inspired by the original mansard roof, was conceived as a continuous skin. The outer surface of the building, clad in cement fiberboard, stretches seamlessly across the height of the façade and folds over to form the roof. The facets produced by these panels reflect light, creating a dynamic experience of light and shadow from different points of view and at different times of the day. Brightly colored reveals in the depths of the windows add to the façade's dynamism. In addition to its distinct form, the building envelope employs highly rated soundproofing materials to mitigate noise from the harbor. Central to this strategy are the acoustical double windows which sit deep into the thick walls, deflecting sound vibrations – and offering expansive views out to the surrounding context the building has begun to transform.



# urbanNext Lexicon

Osthafen

<https://urbannext.net/osthafen/>



ISSN : 2575-5374

# urbanNext Lexicon

Osthafen

<https://urbannext.net/osthafen/>



ISSN : 2575-5374

# urbanNext Lexicon

Osthafen

<https://urbannext.net/osthafen/>



ISSN : 2575-5374



# urbanNext Lexicon

Osthafen

<https://urbannext.net/osthafen/>



ISSN : 2575-5374



