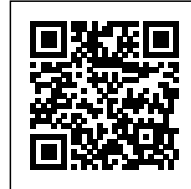




ORCHIDEORAMA

Posted on August 31, 2016 by urbanNext



Categories: [Architizer](#), [Camilo Restrepo](#), [High Density](#), [JPRCR arquitectos](#), [Plan:b](#), [Project](#), [Southern Coexistences](#), [Technology and fabrication](#), [Territory and mobility](#), [Total Latin American Architecture](#)

Tags: [Active Public Spaces](#), [Agency of Urban Organization](#), [Colombia](#), [Latin America](#), [Medellin](#), [Metaphor](#), [Natural dialogue](#), [Natural metaphor](#), [Project](#), [Public coexistences](#), [Public Space](#), [Public space role](#), [Searches on scales](#), [Technological Approach](#), [Territorial Approach](#), [Urban realm](#)

urbanNext Lexicon

Orchideorama

<https://urbannext.net/orchideorama/>

This project rises from a hexagonal geometry that allows for growth and flexibility in the floor plan. In addition, it works with the scale of the trees and some of their strategies: it concentrates all the networks in the trunk, mixes structure and organic strength, and creates translucent foliage.



ISSN : 2575-5374

urbanNext Lexicon

Orchideorama

<https://urbannext.net/orchideorama/>



Using modules made up of seven hexagons, we define a spatial, structural and bioclimatic pattern that allows for repetition, controlled growth and flexibility, both to avoid affecting the existing trees and to adhere to the limited budget.

ISSN : 2575-5374

urbanNext Lexicon

Orchideorama

<https://urbannext.net/orchideorama/>



The pattern or module has a central hexagon that works like a hollow trunk, which concentrates the technical network (structural, electrical, and water collection), the organic network, ventilation for hot air, and an access to rain and humidity for the internal gardens. These trunks are understood as converging vortexes; therefore, the geometry of the wood lining displays a concentrated torsion force through a hyperbolic paraboloid. We tried to combine organic and structural forces.

The intelligence of the pattern is amplified through repetition, but the spatial and bioclimatic qualities are already present in each part. You might say that the qualities of the pattern emerge from the inside out.

ISSN : 2575-5374

urbanNext Lexicon

Orchideorama

<https://urbannext.net/orchideorama/>



The space we propose is not an empty warehouse or an open plan. It is a field with intermittent structural supports and clustered gardens. This allows for combining a large range of activities (weddings, workouts, meditation, concerts, fashion shows, etc.), with the garden and its wildlife and weather.

ISSN : 2575-5374

urbanNext Lexicon

Orchideorama

<https://urbannext.net/orchideorama/>



ISSN : 2575-5374

urbanNext Lexicon

Orchideorama

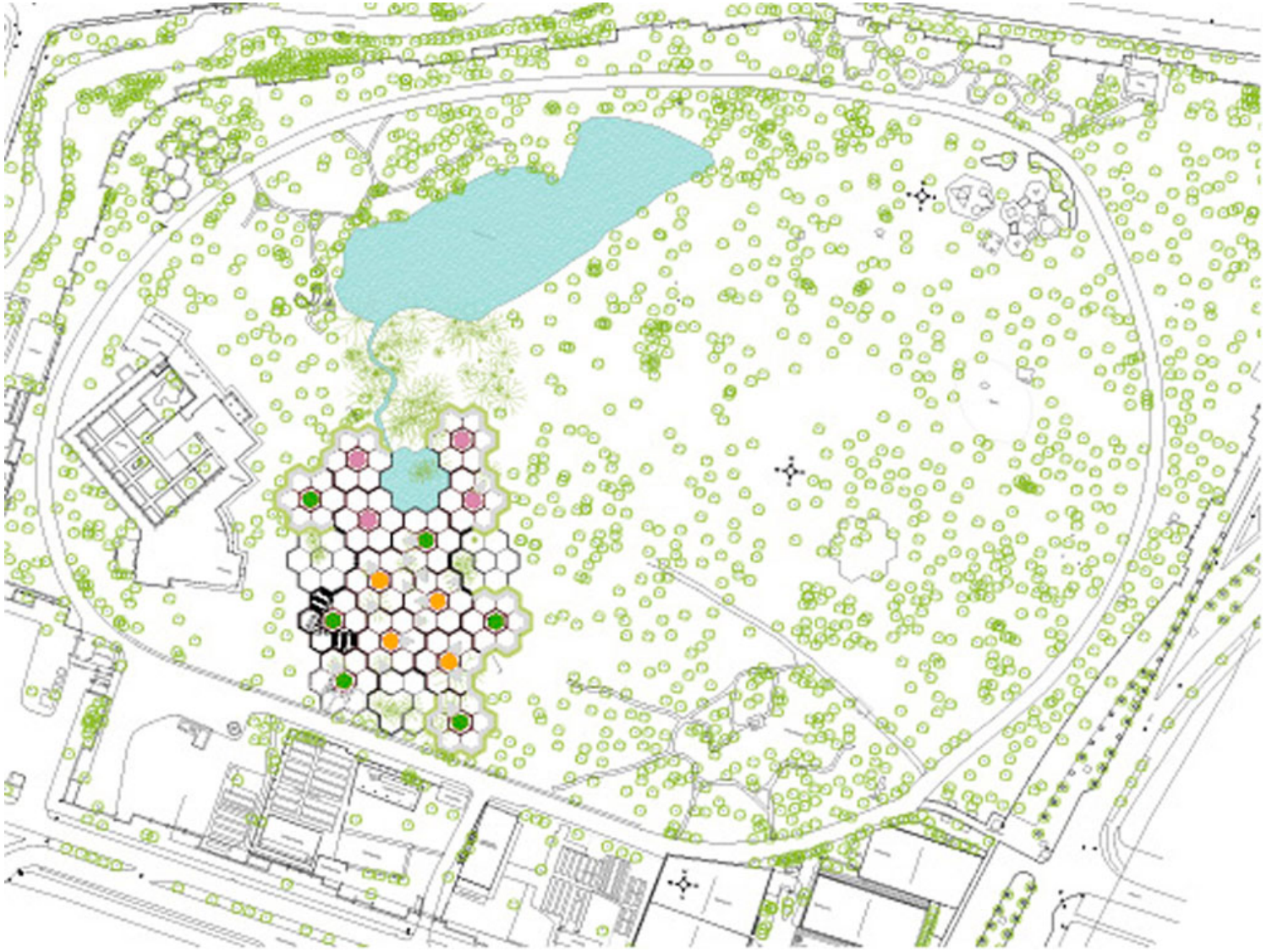
<https://urbannext.net/orchideorama/>



ISSN : 2575-5374

urbanNext Lexicon

Orchideorama
<https://urbannext.net/orchideorama/>

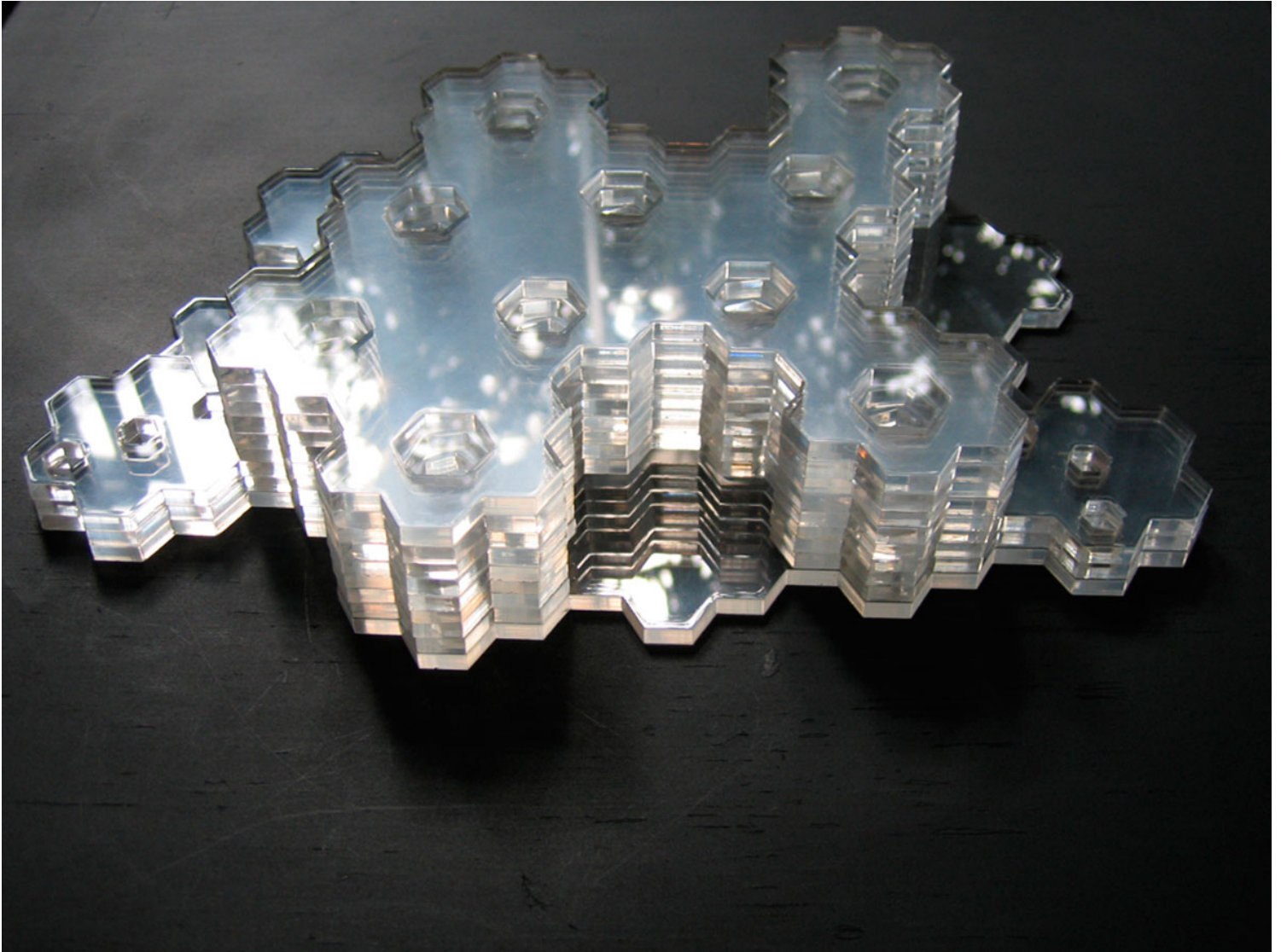


Site Plan

ISSN : 2575-5374

urbanNext Lexicon

Orchideorama
<https://urbannext.net/orchideorama/>



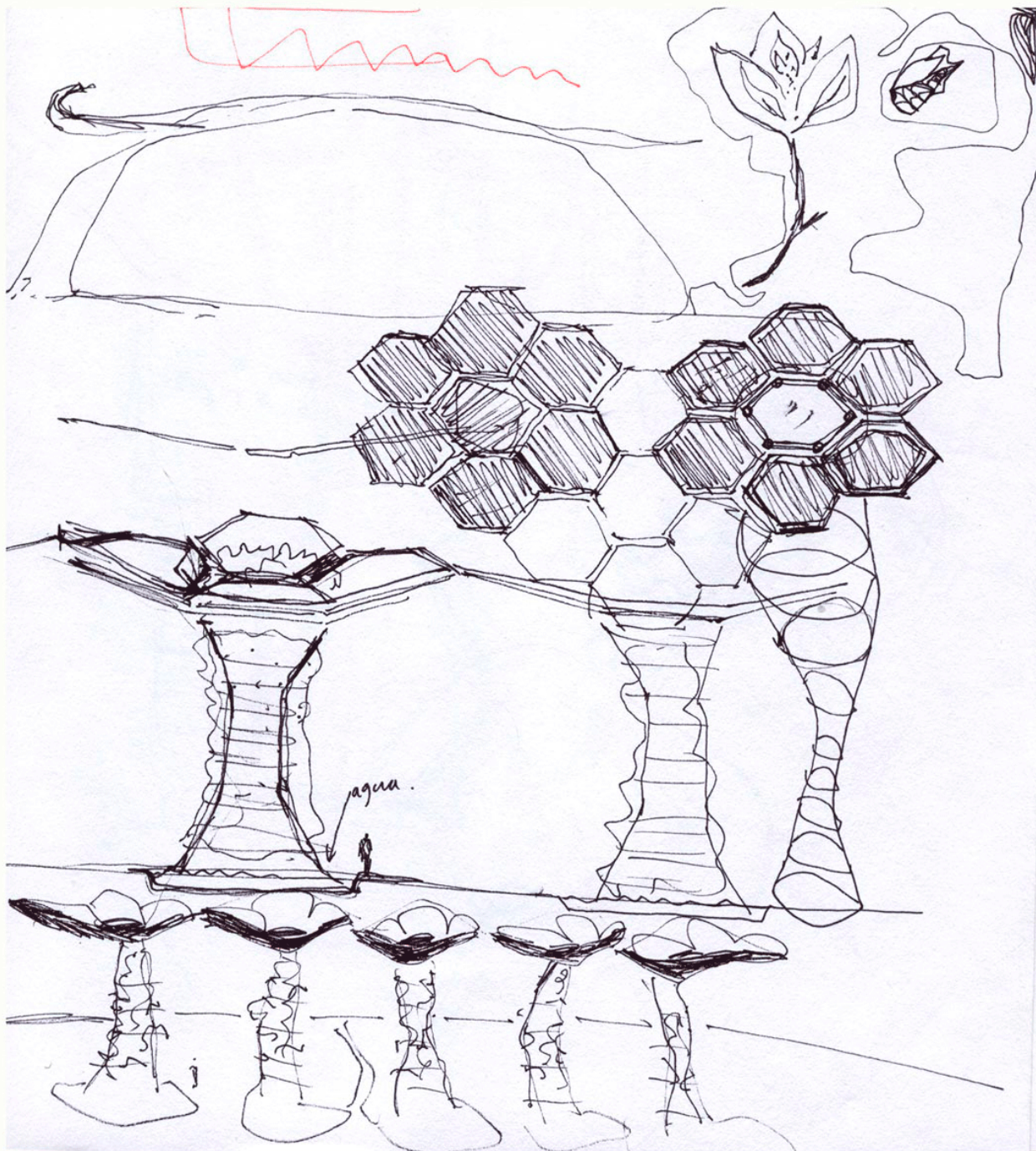
Mockup

ISSN : 2575-5374

urbanNext Lexicon

Orchideorama

<https://urbannext.net/orchideorama/>



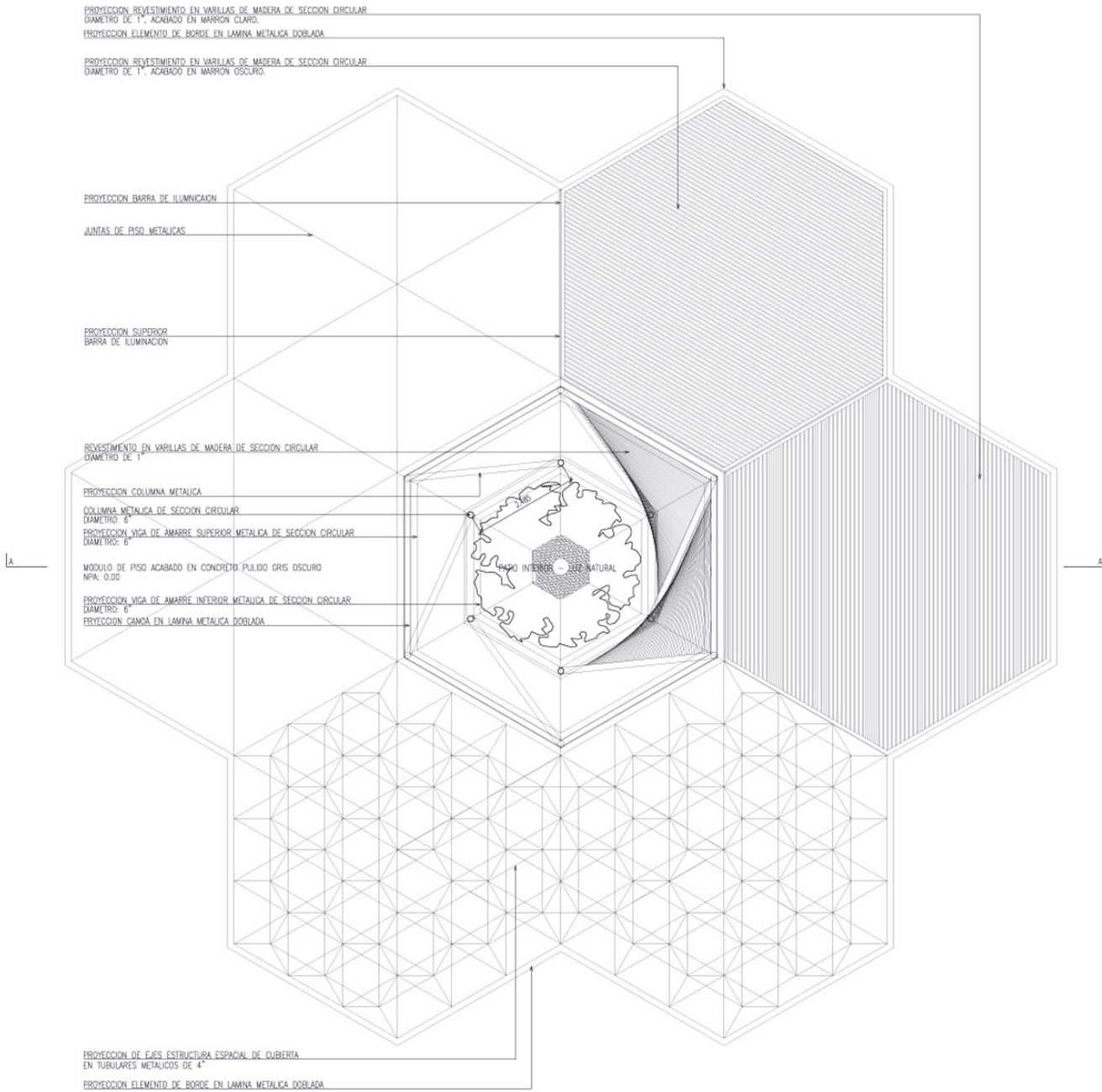
ISSN : 2575-5374

Sketches

urbanNext Lexicon

Orchideorama

<https://urbannext.net/orchideorama/>

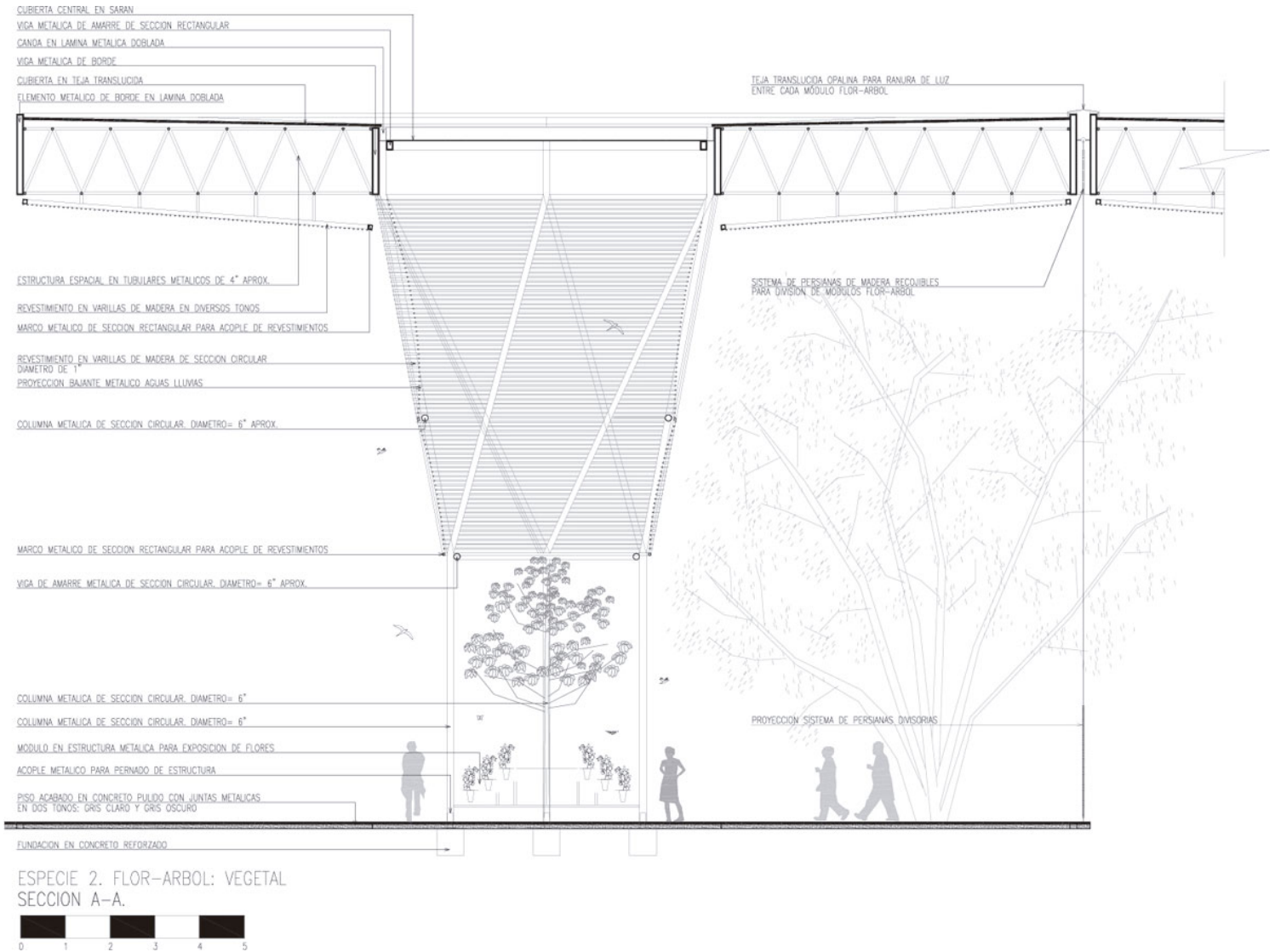


ESPECIE 2. FLOR-ARBOL: VEGETAL
PLANTA GENERAL + REVESTIMIENTOS + ESTRUCTURA.



ISSN : 2575-5374

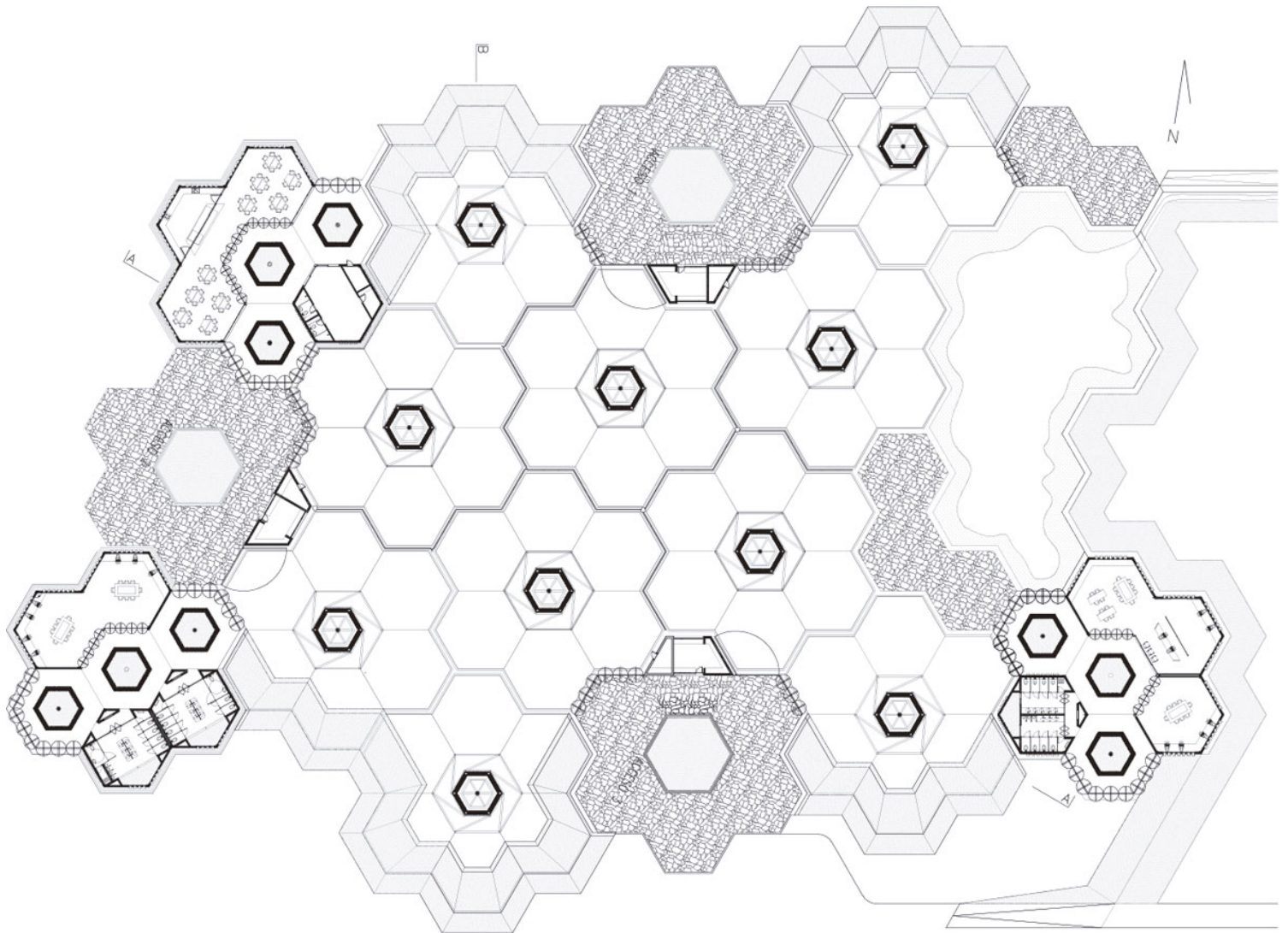
Unit Plan



Unit Section

urbanNext Lexicon

Orchideorama
<https://urbannext.net/orchideorama/>



PLANTA GENERAL ORQUIDEORAMA
JARDIN BOTANICO DE MEDELLIN
0 5 10

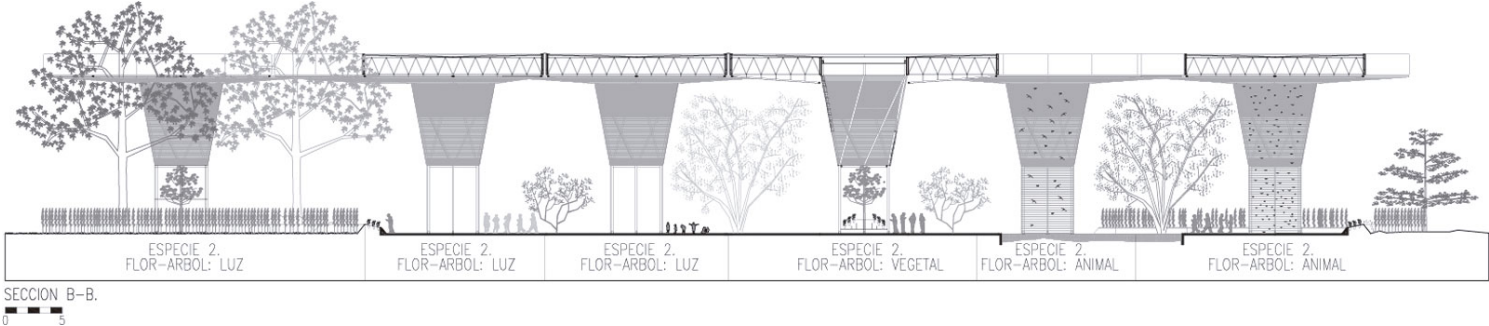
Plan

ISSN : 2575-5374

urbanNext Lexicon

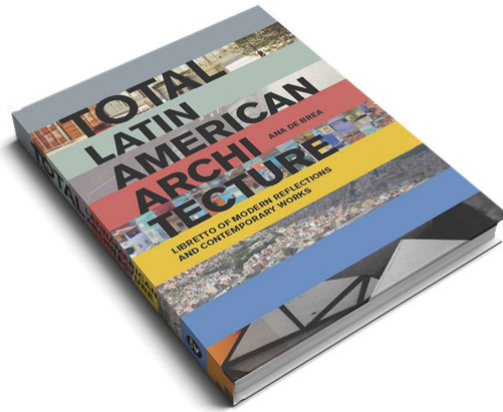
Orchideorama

<https://urbannext.net/orchideorama/>



Section

Extract from



Related publications:

[Total Housing](#)

[Total Singular Housing](#)

[Total China](#)

[Total Landscape](#)

urbanNext Lexicon

Orchideorama
<https://urbannext.net/orchideorama/>

ISSN : 2575-5374