



NANTES HOUSING

Posted on January 28, 2017 by urbanNext



Categories: [Middle Density](#), [Project](#),
[Technology and fabrication](#)

Tags: [City dialogue](#), [France](#), [Housing](#), [Metal cladding](#), [Multifunctional building](#), [Multifunctional space](#), [Nantes](#), [Natural connectors](#), [Project](#), [Public vs. Private](#), [Second skin](#), [Technological Approach](#), [Urban conditions](#)

urbanNext Lexicon

Nantes Housing

<https://urbannext.net/nantes-housing/>

This project starts from the center and is one of the most multi-purposed buildings the agency has ever undertaken: 56 apartments, a nursery school, a center for social reintegration and offices. It is in Nantes (western France), right in the middle of the historical old town, not far from the Beaux-Arts museum. This very urbanized installation surrounds and highlights a wooded garden that has been preciousely preserved.

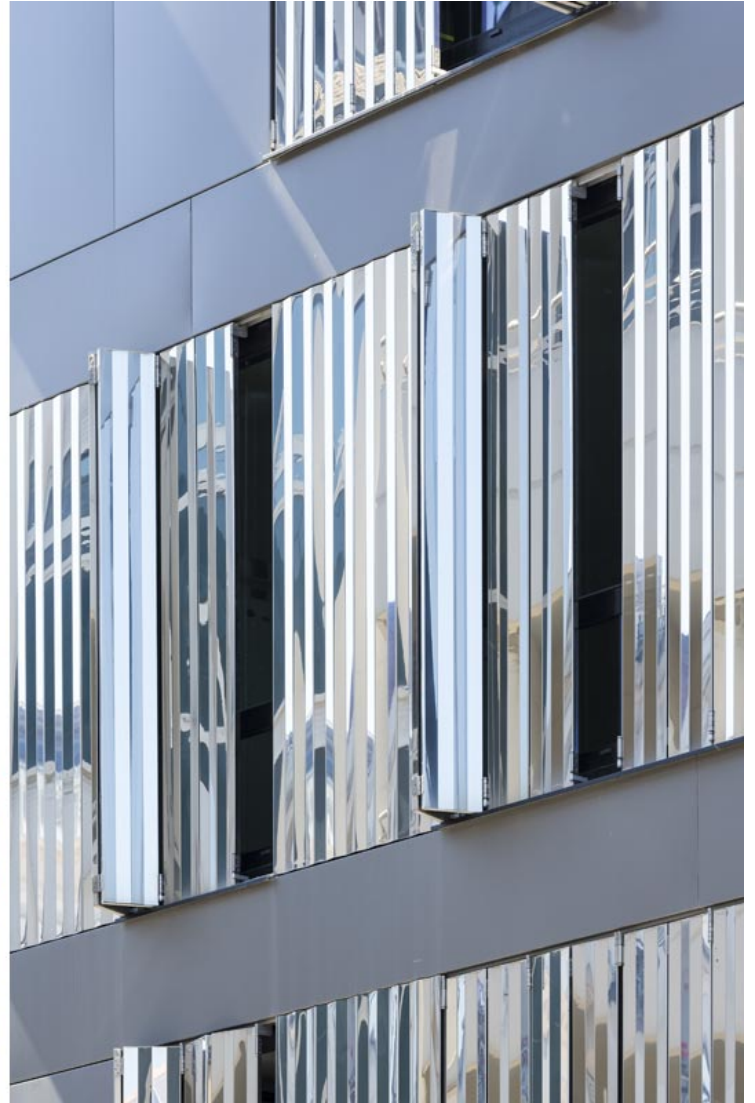


ISSN : 2575-5374

urbanNext Lexicon

Nantes Housing

<https://urbannext.net/nantes-housing/>

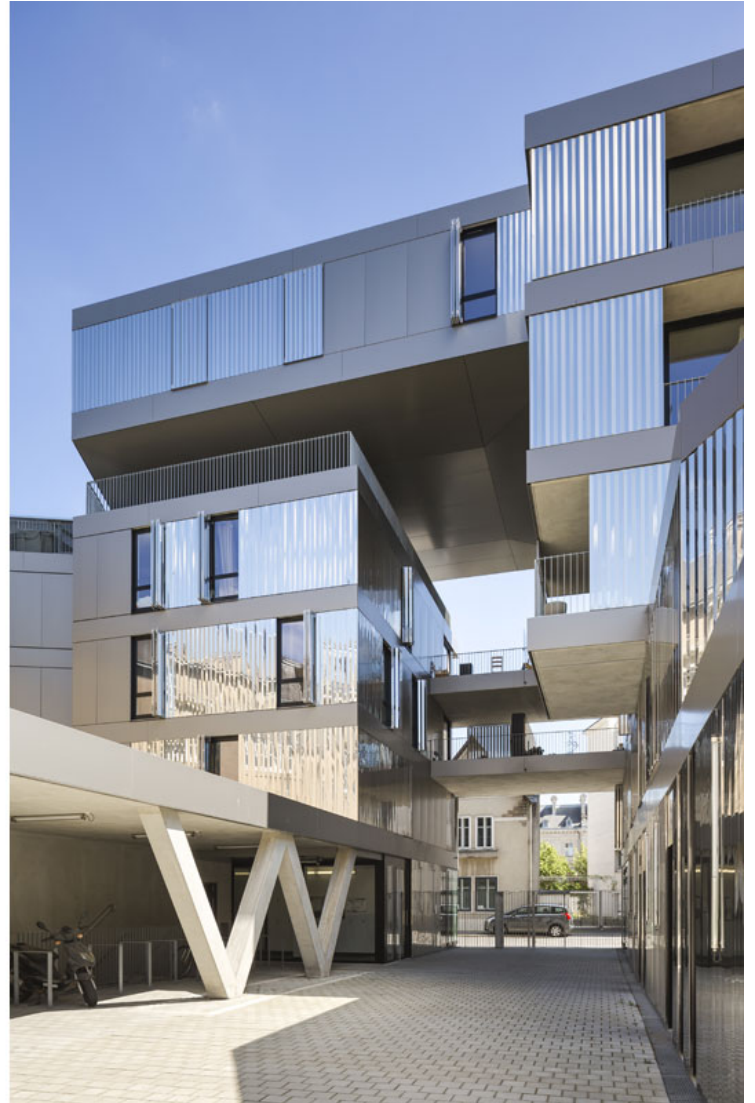
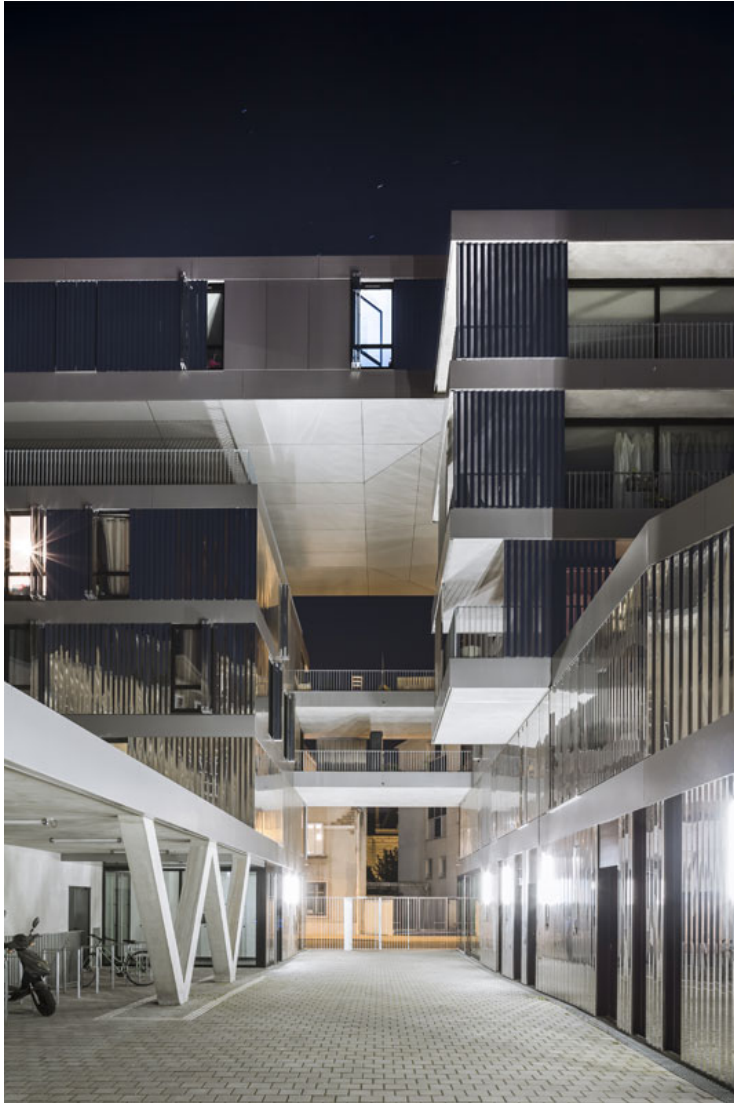


ISSN : 2575-5374

urbanNext Lexicon

Nantes Housing

<https://urbannext.net/nantes-housing/>



ISSN : 2575-5374

urbanNext Lexicon

Nantes Housing

<https://urbannext.net/nantes-housing/>

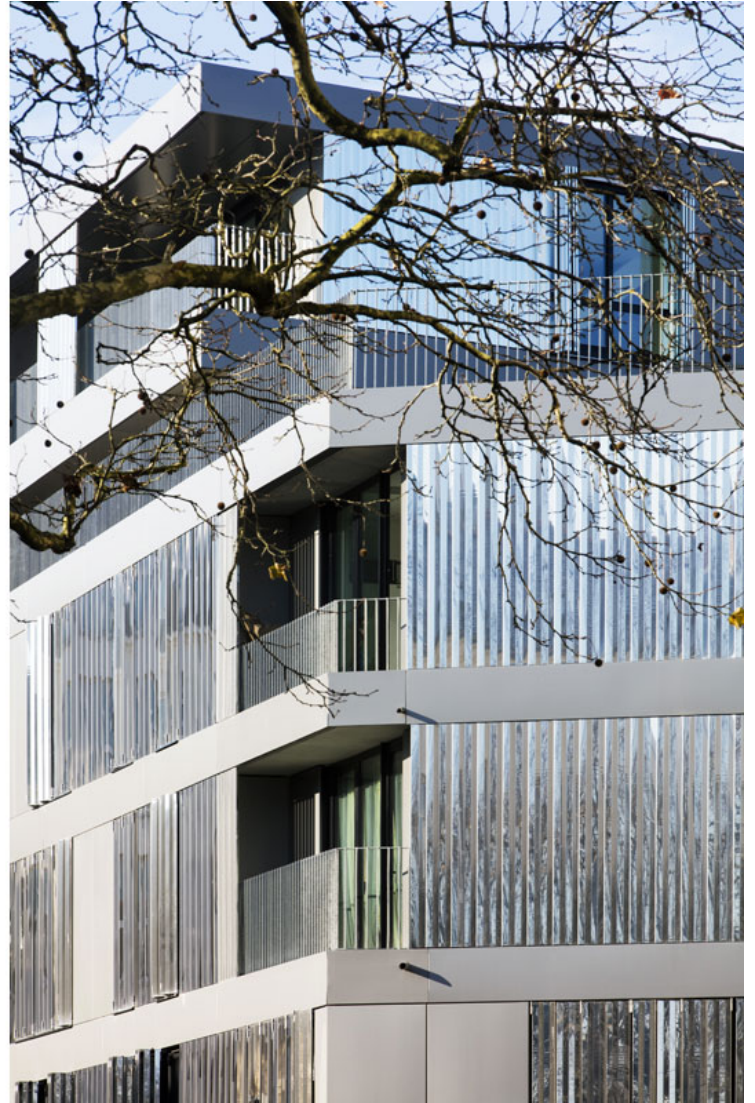


ISSN : 2575-5374

urbanNext Lexicon

Nantes Housing

<https://urbannext.net/nantes-housing/>



The facilities are on the ground floor, and the entirely windowed outer walls are drawn with great precision along the street. They blend into the landscape in the depth of the inner garden and progressively embed into the slope to lodge their garden-roofs in the shade of the cedar trees. The tiered façades of the apartments stretch along the street. The building is split by two wide breaches along its top to provide neighbors with views of the inner landscape and residents triple exposures, extended by the angled loggias that overlook the street or garden, as well as views of the Saint-Clément church steeple and the nearby Jardin des Plantes. The contemporary architectural

ISSN : 2575-5374

urbanNext Lexicon

Nantes Housing

<https://urbannext.net/nantes-housing/>

language is intentional with all of the outer walls decorated in horizontal metallic cladding and bands, between which shutters, louvers and stainless-steel panels with curtain-like folds are inserted. The garden at the building's center illustrates another conception of town-center density that is both generous and landscaped.



ISSN : 2575-5374

urbanNext Lexicon

Nantes Housing
<https://urbannext.net/nantes-housing/>



ISSN : 2575-5374

urbanNext Lexicon

Nantes Housing

<https://urbannext.net/nantes-housing/>



ISSN : 2575-5374

urbanNext Lexicon

Nantes Housing

<https://urbannext.net/nantes-housing/>



ISSN : 2575-5374

urbanNext Lexicon

Nantes Housing
<https://urbannext.net/nantes-housing/>



ISSN : 2575-5374

urbanNext Lexicon

Nantes Housing

<https://urbannext.net/nantes-housing/>



ISSN : 2575-5374

urbanNext Lexicon

Nantes Housing
<https://urbannext.net/nantes-housing/>



ISSN : 2575-5374

urbanNext Lexicon

Nantes Housing
<https://urbannext.net/nantes-housing/>



ISSN : 2575-5374

urbanNext Lexicon

Nantes Housing

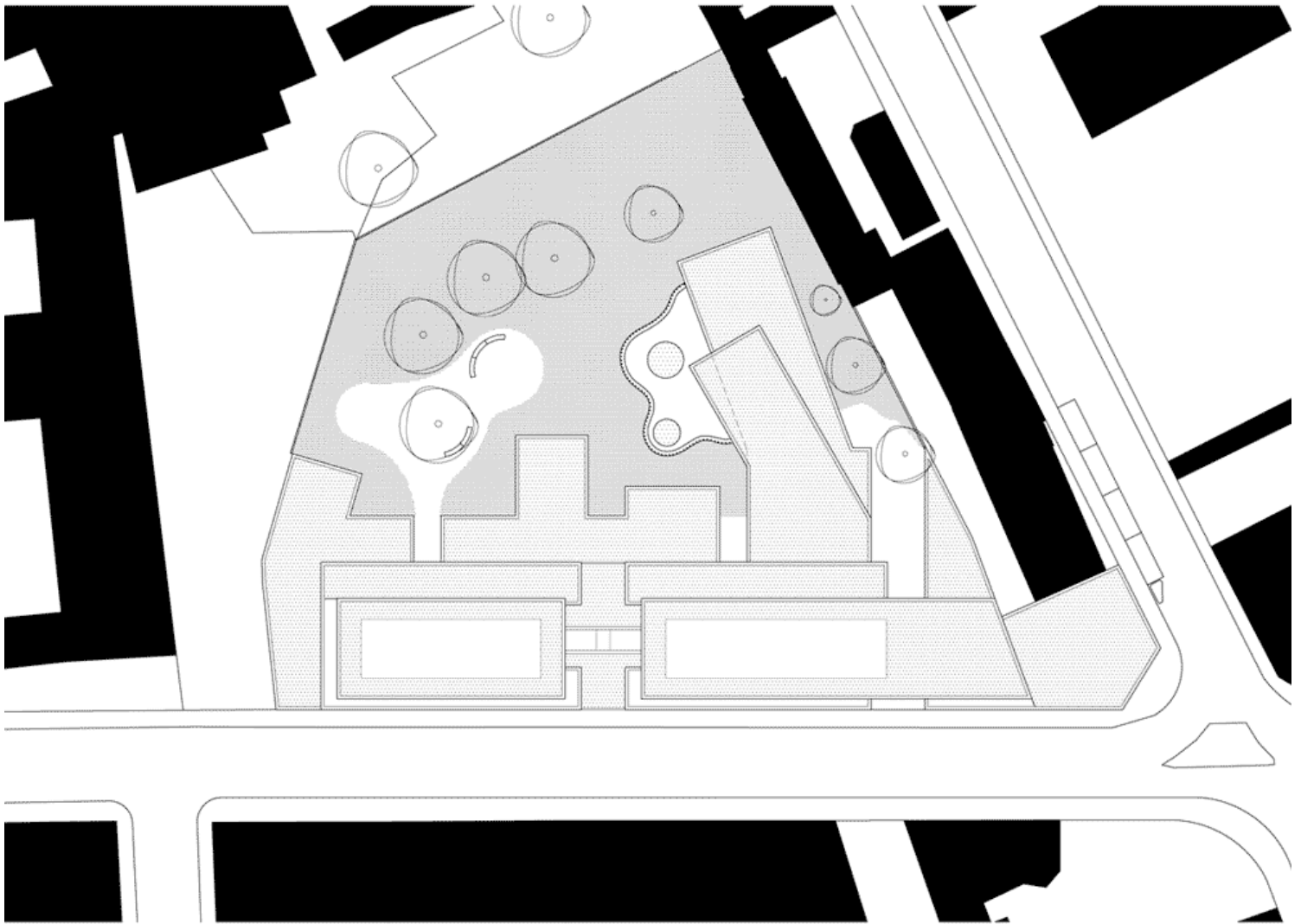
<https://urbannext.net/nantes-housing/>



ISSN : 2575-5374

urbanNext Lexicon

Nantes Housing
<https://urbannext.net/nantes-housing/>



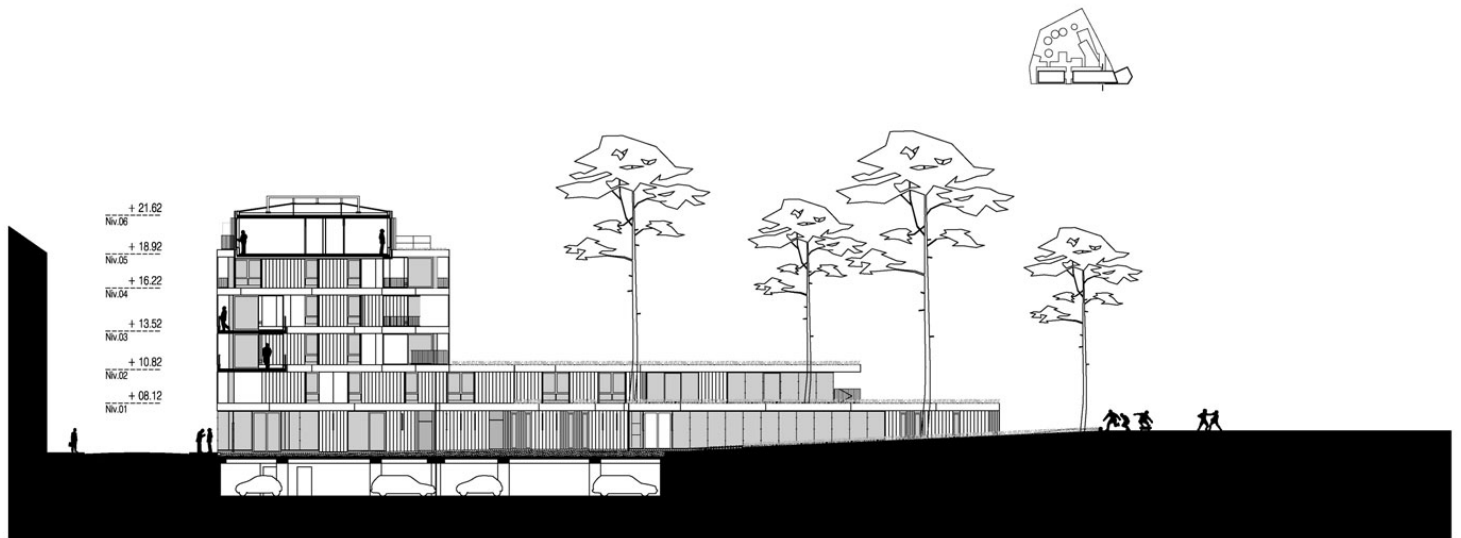
Plans

ISSN : 2575-5374

urbanNext Lexicon

Nantes Housing

<https://urbannext.net/nantes-housing/>



Section

ISSN : 2575-5374

urbanNext Lexicon

Nantes Housing
<https://urbannext.net/nantes-housing/>

ISSN : 2575-5374